

The Valley Profile

CULVERT PIPES
 Huge Range In Stock Now
 160mm - 1800mm
 Tough / Strong



tt
 plastics 07 868 6191
 97 Ngati Maru H/Way, Kopu

DM DIPROSE MILLER
 chartered accountants

The land beneath the Thames Centennial Pool has long held deep spiritual, cultural, and historical significance for Ngāti Maru.

Taipari Park, the current site of the pool, is built upon an early burial ground, or urupā, associated with Te Kauaeranga Pā - a settlement that was occupied by tribes of Marutūāhu.

According to Te Ara, the Encyclopaedia of New Zealand, Ngāti Maru are descendants of Marutūāhu's son Te Ngako.

Its ancestral connection to Taipari Park was confirmed by the Māori Land Court in 1869.

But history outlined by Thames-Coromandel District Council showed that over time, the land passed out of Māori ownership, and portions of the urupā were taken for road purposes in the early 20th century.

In the 1930s, additional land was vested in the Thames Borough Council. In 1951, the land was declared a public reserve, and in the 1970s, the Thames Centennial Pool was constructed on the site.

Now, the council plans to remove the ageing aquatic facility from Taipari Park and return the land to iwi by the end of next year.

The decision has led to wider discussions about local funding, affordability, and the future of swimming facilities in Thames.

Te Tara o Te Ika Māori Ward councillor Michael Barlow, who has whakapapa to Ngāti Maru, told *The Profile* in a personal capacity that the

Beneath the pool

The history, significance, and future of Taipari Park

As part of a new series about Thames Centennial Pool, reporter KELLEY TANTAU explores the history of Taipari Park, its significance to Ngāti Maru, and long-standing plans to return the land beneath the pool to iwi.



Te Tara o Te Ika Māori Ward councillor Michael Barlow.
 Photos: SUPPLIED

history of Taipari Park carried a weight that "was not always visible" to those who hadn't grown up with it. He said there was a sense of responsibility and reflection whenever the urupā was discussed.

"It's a place that deserves

care, respect, and a level of understanding that goes beyond its use as a public facility," he said.

According to the council, the construction and continued operation of public facilities on the urupā had been a source of

concern for many years.

Planning documents from back in 2006 first signalled council's intention to remove the facilities from Taipari Park and return the land to iwi, with the commitment formalised in the Thames and Thames Coast

Reserves Management Plan in 2019, and between 2015-2018, council undertook a historical investigation with Ngāti Maru on Taipari Park and the urupā.

Since 2023, Thames-Coromandel District Council and

CONTINUED ON P2

We all know the drill...

RED is a NO



GREEN is a GO



Phone us today

0800 4 MY BIN (0800 469 246)

www.smartenvironmental.co.nz



Four-hour mission saves man's best friend

By KELLEY TANTAU

A hunting dog who spent a cold night stranded at the bottom of a cliff near Onemana was reunited with her owner after a four-hour rescue mission.

On May 25, Sadie the dog chased a pig over steep terrain near Pokohino Beach before tumbling about 50 metres down a cliff.

Tairua Volunteer Fire Brigade's Lines Level 2 crew were called to assist with the rescue, alongside Onemana Rural Brigade, and the Hamilton Level 3 Lines rescue team.

Billy Turner, senior firefighter with the Hamilton City Level 3 Line Rescue Team, told *The Profile* that on arrival, crews were faced with challenging forestry terrain that required 4WD access, followed by a roughly 20-minute hike carrying specialist rescue equipment to the location above Sadie.

The operation took around four hours from start to finish.

Turner said Fire and Emergency Level 3 Line rescue career staff were notified of the incident shortly before 12pm, and quickly prepared personnel and equipment before departing Hamilton for the coast.

He explained that the Level 3 line rescue team from Hamilton was made up of career firefighters, and was one of five national specialist rescue teams, covering the central North Island down to the Desert Road.

Their role included accessing, stabilising, and recovering patients or animals using specialist haulage systems and advanced rope rescue techniques.

Meanwhile, Fire and Emergency Level 2 line rescue teams were responsible for accessing and stabilising patients - or in this case, dog - in difficult environments.

"The team from Tairua responded to assist with manpower and valuable local knowledge," Turner said.

"One of the biggest challenges was simply accessing the location safely while transporting all the specialist rescue gear into a remote forestry area. The steep cliff face and ensuring both rescuer and animal safety throughout the operation added further complexity.

"Co-ordination between multiple teams and working within a confined rescue area were also key challenges crews had to overcome."

While Turner said line rescue crews were more commonly called to serious incidents in harsh conditions and low visibility, this mission was a particularly rewarding one.

And once reunited with her owner, Sadie - who didn't have any major injuries - knew



Firefighters with the rescued - and thankful - Sadie. Photo: SUPPLIED

exactly who to thank.

"During the debrief afterwards, Sadie reportedly made a full 360-degree round of everyone gathered for the rescue, almost as if she was personally thanking each rescuer involved," Turner said.

"Positive outcomes like this are incredibly rewarding for firefighters and rescue teams.

Often, line rescue crews are deployed to tragic incidents or operate in harsh conditions late at night and in poor weather.

"Being able to work together, successfully use specialist skills, and achieve a happy ending for both the dog and owner was a refreshing and rewarding experience for all involved."

BAYLEYS ALTOGETHER BETTER

Pippa Jackson
Residential and lifestyle sales
Thames-Coromandel
027 747 7000
MH Realty
Bayleys Thames

The Little Things
www.thelittlethings.co.nz © Lawrey & Lole

Enjoying your roasted ratatouille with parsley and lemon crusted fish?

Not really. Wish we were having nachos.

Wondering why you make so much of an effort.

Hi, my name is Pete the Pukeko and I'm here to help you. Find me in one of the display advertisements in The Valley Profile, then email admin@valleyprofile.co.nz with your full name & postal address, and the business name and page number of the ad by the following Monday to go in the draw to win a Lotto ticket. Last issue it was in the Paeroa Auto Electrical ad.

History, significance and future of Taipari Park

CONTINUED FROM P1

the Thames Community Board have undertaken public surveys, feasibility studies, and business cases to determine the best option for replacing the pool and meeting community needs.

Undertaken over 2023 and reported in February 2024, a feasibility study considered potential options to respond to the community's needs.

This assessed a potential 19 site options and showed the best site for a local facility was at the Richmond St courts, on leased land from Thames High School.

The latest decision, as of March, 2026, was the council's Infrastructure and Finance Committee agreeing to recommend a more structured, long-term approach to

progressing a new aquatic facility, shifting the project from a series of investigations into a co-ordinated programme of work.

And according to the council, the process has taken time because the project represented one of the biggest infrastructure decisions facing Thames, with all options needing to be "explored and costed" in a challenging economic climate.

Cr Barlow, who said many in his generation still cherished memories of the skate park that once occupied the site, and the memorial tagging created there for one of their mokopuna, said those personal experiences sat alongside the deeper history of the whenua.

However, he said a lack of wider understanding around the site's significance

had contributed to the length of time it's taken to see the site returned to iwi.

"There continues to be strong community interest and support around the future of this site, alongside a growing awareness of its history and significance, and I do not believe the full extent of that significance has always been widely understood across the community, and that has contributed to how long this issue has taken to come to the point it is at now," he said.

"From my perspective, it is important that as discussions continue, whether about the future of aquatic facilities or the whenua itself, they are grounded in meaningful engagement with iwi and in a genuine respect for the history of the site."

PLACE AN ADVERTISEMENT/ADVERTORIAL: Advertising Manager Nikki Sanders, Ph 022 130 3885, nikki@valleyprofile.co.nz; Feature Writer Davidda Hikatangata, Ph 022 174 3988, davidda@valleyprofile.co.nz.
NEWS/EDITORIAL: Managing Editor/Owner Teresa Maxwell, Ph 0204 0944 853, editor@valleyprofile.co.nz; Senior Reporter Kelley Tantau, Ph 022 619 4889, kelly@valleyprofile.co.nz; Senior Reporter Alice Parminter, Ph 022 527 0988, alice@valleyprofile.co.nz.
LETTERS: All letters must include your full name and address, must be **250 words or less** and may be edited, abridged or rejected at editor's discretion. Email letters to the editor to: editor@valleyprofile.co.nz.
THE VALLEY PROFILE is independently owned and operated. We print 16,000 copies every week, with an estimated reach of 35,000 readers, delivered to every letterbox in the Hauraki Plains, Waihi, Ngatea, Thames and Thames Coast, with bulk drops throughout the Coromandel Peninsula, including Whangamatā, Whitianga, Pauanui, Tairua and Coromandel township.
FIND US ONLINE: Visit www.valleyprofile.co.nz or download the Coromandel App on your smartphone. **ISSN: 2703-5700**



Accountants
The Hauraki Taxation Service Limited

- Established 1982
- For out of town independent accounting advice
- Approved agents for Inland Revenue Department
- Offices in Thames & Coromandel Town

myob xero

328 Pollen Street, Thames
Ph/Fax: 07 868-9710
E:thames@haurakitaxation.co.nz

95 Kapanga Rd, Coromandel
Ph/Fax: 07 866-8660
E:coro@haurakitaxation.co.nz

Thames Tides

Wed Jun 3	Thu Jun 4	Fri Jun 5	Sat Jun 6	Sun Jun 7	Mon Jun 8	Tue Jun 9
Morning: 2:48am 0.8 Afternoon: 3:05pm 0.7	Morning: 3:30am 0.9 Afternoon: 3:43pm 0.7	Morning: 4:12am 0.9 Afternoon: 4:22pm 0.8	Morning: 4:55am 0.9 Afternoon: 5:02pm 0.8	Morning: 5:39am 0.9 Afternoon: 5:45pm 0.9	Morning: 12:16am 3.1 Afternoon: 12:30pm 3.0	Morning: 1:03am 3.1 Afternoon: 1:18pm 3.0
7:23am 5:09pm	7:24am 5:08pm	7:24am 5:08pm	7:25am 5:08pm	7:26am 5:08pm	7:26am 5:07pm	7:27am 5:07pm
Best At: 2:01am 2:27pm	Best At: 2:52am 3:16pm	Best At: 3:40am 4:04pm	Best At: 4:27am 4:49pm	Best At: 5:11am 5:33pm	Best At: 5:55am 6:16pm	Best At: 6:38am 7:00pm
Set: 9:48am Rise: 7:09pm	Set: 10:29am Rise: 8:09pm	Set: 11:03am Rise: 9:11pm	Set: 11:33am Rise: 10:13pm	Set: 12:00pm Rise: 11:15pm	Last Quarter Set: 12:24pm	Rise: 12:18am Set: 12:48pm

MOON AND FISH KEYS
New Moon, First Quarter, Full Moon, Last Quarter
Good Fishing, Fair Fishing, Not So Good

TIME DIFFERENCES FOR OTHER PLACES
To determine tide times at the following places, add (+) or subtract (-) the given time difference from the Thames times listed in the calendar.

PLACE	HIGH	LOW
Coromandel	-0 04	-0 03
Whitianga	-0 01	-0 05
Tairua	+0 10	+0 20
Whangamatā	-0 03	-0 06
Waihi Beach	-0 21	-0 16

\$85m boost for highway resilience

Major new investment to strengthen key state highways across the Coromandel, improve resilience, reduce disruption, and help keep communities connected during severe weather events.

The government has confirmed \$85 million in funding for resilience projects on State Highway 25 and the replacement of the Kirikiri Stream Bridge on State Highway 26 as part of its \$400 million package of state highway resilience projects announced in its Budget last week.

Coromandel MP Scott Simpson welcomes the investment. "Coromandel communities know better than most how disruptive severe weather can be," he said. "Recent

weather events have caused slips, flooding and road closures across the peninsula, cutting off communities and making it harder for people, freight and visitors to get where they need to go."

SH25, which carries up to 5000 vehicles a day, is the main road connecting communities around the Coromandel Peninsula. The SH25 resilience programme has a high-level estimated cost of around \$20 million and will target up to 11 high-risk locations vulnerable to slips, rockfalls and drainage issues. "SH25 is the road that keeps the Coromandel connected. When it closes, there are very limited alternatives, and those routes can also be vulnerable during severe weather," Mr Simpson said.

"This investment will help reduce the risk of closures and improve reliability for the people and businesses that rely on the road every day."

A second project is the \$65m Kirikiri Stream Bridge replacement on SH26 in Kōpū. The existing bridge is more than 80 years old and vulnerable to flooding. The replacement bridge will be raised by around three metres, improving flood protection

from what is currently a one-in-five-year event to a one-in-100-year event.

"The new bridge will help keep this important route open during severe weather while also supporting wider flood protection work in the area," Mr Simpson said. "It will improve access for local communities, reduce disruption for motorists, and provide greater resilience for nearby homes, businesses and farmland."

Further work will continue to refine the final scope, design and delivery programme for both projects.

Thames-Coromandel District Council Mayor Peter Revell said it was a "critical investment" for

the district. "This is much-needed funding that our council has been consistently pressing the government to direct our way. You only need to look at how well SH25A from Kōpū to Hikuai has held out since the new bridge and other improvements were made after Cyclone Gabrielle. "That road has been open and accessible pretty much all through the repeated storms we've experienced since it was reopened in late 2023," he said. "We've already had three severe weather events this year that isolated communities and disrupted businesses. This investment will help reduce the risk of road closures on the State Highways and allow us to bounce back more quickly."

Destination Hauraki Coromandel general manager Kylie Hawker-Green said the roading investment was critical for a region that depends on year-round access. "For Coromandel, SH25 is our lifeline. When it's closed or unreliable, the impacts are felt immediately by local businesses, workers and visitors," she said. "Funding that focuses on resilience and prevention, rather than repeated emergency repairs, is critical for restoring confidence in the region."

"For Coromandel, SH25 is our lifeline. When it's closed or unreliable, the impacts are felt immediately by local businesses, workers and visitors"

- Kylie Hawker-Green

Six decades of service recognised in King's Birthday Honours

By KELLEY TANTAU

A lifetime of service to the Whangamatā community has earned long-serving volunteer Ralph Pitcher a King's Service Medal in this year's King's Birthday Honours.

Mr Pitcher has spent more than 60 years serving the community through organisations including Fire and Emergency New Zealand, St John, Lions, and local sporting groups.

He joined the Whangamatā Volunteer Fire Brigade in 1965 and remains an active firefighter today. Over the decades, he has helped oversee major equipment and building upgrades for the brigade while also mentoring generations of local firefighters.

But beyond the fire service, Mr Pitcher has played a key role in a wide range of community organisations.

He is a founding member, president, and committee member of the Moana House retirement home, where he was integral to the completion of the Wilson Wing Hospital, and five low-cost housing cottages for pensioners.

He has served for more than 48 years with the Whangamatā Lions Club, including 15 years as president.

His involvement in local sport has included serving as trustee of the Lions Investment Golf Club, committee member of the Williamson Golf Club, and helping establish the Titoki Golf Club. He was also a founding member and president of the Whangamatā Sports Centre and Squash Club, contributing significantly to the club's redevelopment.

Mr Pitcher also volunteered as an ambulance officer before later becoming chair of St John's Whangamatā ambulance service. He spent 15 years as a committee member of the Whangamatā Club and continues to volunteer as a Meals on Wheels driver.

He did not respond to email requests for comment.

The New Zealand Royal Honours system provides a way for New Zealanders to thank and congratulate people who have served their communities and to recognise people's achievements.

Among the 178 people being recognised in the King's Birthday Honours this year, six have been appointed as Knights and Dames Companion of the New Zealand Order of Merit.

The list was made up of 47 per cent women and 53 per cent men.

WAIHI

PUBLIC MEETING



2pm, Saturday

6 June

Waihi Event Centre

28 Haszard Street

Waihi



Funded by the Parliamentary Service.
Authorised by W. Peters, Parliament Buildings, Wellington

For five generations, the Read family has been helping Thames and the Coromandel Peninsula get the job done with trusted brands and expert advice.







READ BROS.



EST. 1867
Hardware

Whether it's fixing, building or exploring the outdoors - Read Bros have you covered. Visit us in store or online.

www.readbros.co.nz
308 Pollen St, Thames
07 868 6608

ADVERTISEMENT

John Bertrand Collectables Are Buying in Thames, Hauraki and Coromandel Regions This Week

Once again, the gold and collectables buyers from Wellington company John Bertrand Collectables are visiting Thames, Hauraki and Coromandel Regions this week. Mr Tony Grant from the company says, "If you are downsizing or wanting to dispose of things because they no longer serve any purpose to you or your family bring them in". "This week will be a great opportunity to have any items you want to sell assessed by our buyers" said Mr Grant. Particularly wanted are Gold and Silver (in any of its forms) and Collectables such as Coins, Banknotes, War Medals, Old Wind-up Watches and other interesting Small Collectables.

"We are keen buyers, especially of the items in the list below" said Mr Grant. "Nothing is too small for our consideration. We are just as happy buying 1 item as we are buying 1,000 items" he said. The buyers will be in Thames, Hauraki and Coromandel Regions this week. (see details below). As Tony Grant points out "If you are in doubt about any items you may wish to sell, bring them along for an instant appraisal."



Mr Anthony (Tony) W. Grant

Fellow of the Royal Numismatic Society of New Zealand Incorporated
Director and Buyer
John Bertrand (Collectables) Ltd
Author of the John Bertrand NZ Coin & Banknote Catalogue

Gold & Silver At Very High Prices

Over the last couple of years, we have seen a sharp increase in the price of precious metals. The gold price in New Zealand is still at historically high levels. So, gather up all your unwanted items and make an appointment to see the buyers. Tony Grant says "We can buy gold items in all forms, including Jewellery (Rings, Chains, Brooches etc.), Coins (Sovereigns and the like), Alluvial (River Gold), virtually anything, even Gold Teeth! We also need all Sterling Silver including Cups, Tea Services, Cutlery and Old Coins" he said.



Interesting Small Collectables Wanted

The buyers from John Bertrand (Collectables) Ltd, visiting Thames, Hauraki and Coromandel Regions this week, are happy to look at any interesting items, for example vintage pocket and wristwatches such as Rolex, Men's Omega, Breitling and gold watches etc. Also wanted, pre 1950's picture postcards, Maori and Pacific artefacts, old fountain pens and other small antique or historical items.

"If you have something unusual which you would like to sell, please bring it into one of our venues, we would like the chance to at least have a look at it" said Tony Grant, buyer for the Company. "We will consider anything which may be of interest to a collector" he said.

Some Big Dollars in Early Banknotes

Early New Zealand Banknotes dated before 1932 are currently fetching big money! This is according to Mr Tony Grant, author of the *John Bertrand New Zealand Coin & Banknote Catalogue*. Mr Grant is in Thames, Hauraki and Coromandel Regions this week on a buying trip for John Bertrand (Collectables) Ltd and would be very keen to see any of these issues. "We will pay at least \$300 for any undamaged Ten Shilling or One Pound banknote

from a New Zealand trading bank dated 1932 or before.

Denominations of five pounds and higher would be worth from \$700. "Any banknote dated prior to 1900 would be worth at least \$1000" said Mr Grant.

Also purchased are any Reserve Bank of New Zealand pre-decimal issues, especially 50 Pound notes. All overseas banknotes are also wanted, especially early Pacific Island issues.

Collectors Need War Medals

Currently, throughout NZ and the world there is a big demand by collectors for war medals. These cover all wars right through from the New Zealand Land Wars and the Boer War, to the First and Second World Wars and the later Korea and Vietnam conflicts. New Zealand Servicemen and Women first served overseas in the Boer War in South Africa around 1900 and the war medals awarded for this service are needed by the buyers, as are any other Medals from early New Zealand and the New Zealand Wars.

General service medals from both the First and Second World Wars will also be purchased, but as can be imagined these were awarded in fairly large numbers. "If a group of medals has any special award for bravery such as the Military Medal, Military or Flying Cross or other medals for Distinguished Conduct or Meritorious Service, these can add great value to a group" stated Mr Tony Grant, buyer for John Bertrand (Collectables) Ltd. "Many families have old medals, some dating back to early Imperial days, that they are not sure what to do with. These are better off in the hands of collectors who will look after them. We will be happy to look at any war medals whatsoever, just bring them in to venues" he said.

Old Coins Can Toss Up a Rarity

Do you have a bunch of old coins sitting around in your drawers and cupboards? You just never know what rarities may be lurking there. The advice from Tony Grant from John Bertrand (Collectables) Limited is to "bring them in and let us have a look". "No need to sort anything out just bring them in 'as is' and please don't clean them! We can go through coin accumulations and collections fairly quickly" he said. The buyers are particularly keen to purchase pre-1946 New Zealand Silver Coins and World Silver Coins. "In any event we will buy All Coins," said Mr Grant.

JOHN BERTRAND (COLLECTABLES) ARE BUYING NOW!!

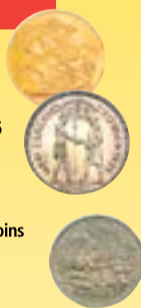
OLD GOLD

- Unwanted Jewellery or Broken Rings
- Gold Chains
- Gold Watch Cases
- Alluvial (River) Gold
- Dental Gold
- Gold Coins
- Gold Racing & Trophy Cups



COINS

- All Gold & Silver Coins
- Gold Sovereigns
- Gold Half Sovereigns
- NZ Silver Coins 1946 & Before
- Also wanted NZ & World Coins after 1946
- Australian Silver Coins to 1963
- English Silver Coins to 1946
- NZ 1935 "Waitangi Crown"
- USA Coins up to 1964
- Old Collections & Accumulations of World Coins
- Modern Collector's Coins & Sets
- NZ Reserve Bank Sets
- *No Pennies or Halfpennies Please*



BANKNOTES

- NZ & Australian "Trading Bank" Notes pre 1932 (e.g. Bank of New South Wales, Bank of NZ etc)
- Reserve Bank of NZ Pre-Decimal Notes
- Any £20, £50 or £100 Notes
- Hong Kong & Malayan Banknotes
- Australian Pre Decimal Notes
- Australian "Star" Notes
- Early Fijian and Samoan Banknotes
- NZ Traders Promissary Notes (1840s)
- NZ Government Debentures
- NZ Banknotes overprinted for use in Fiji, Cook Islands etc
- Postal Notes
- All other World Banknotes



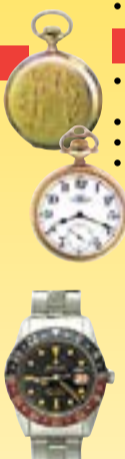
GOLD & SILVER

- Racing Cups
- A&P Show Cups
- Sports Cups
- Presentation Keys & Trowels
- Show Pieces
- Sterling Silver Tea Sets
- Sterling Silver Cutlery
- Scrap Gold & Silver

No EPNS or Silver Plated items Please

WRIST & POCKET WATCHES

- Gold & Silver Pocket Watches
- Any Rolex Watches
- Omega Gents Watches
- Any Breitling, Jaeger Le Coultre, Vacheron & Constantin, Patek Philippe, or IWC Watches
- Moon Phase Watches
- Chiming or Alarm Watches (Pocket or Wrist)
- Military Watches
- Divers Watches
- All other pre 1950s wind up watches (parts value only)
- *No Quartz or Battery Operated Watches Please*



TOKENS

- NZ & Australian "Tradesmen's" Tokens
- NZ Transportation Tokens
- Railway Passes
- Tram Tokens (not Dunedin Tramways)
- Presbyterian Church Communion Tokens
- Bread Tokens
- Theatre, Cafe, Discount Tokens etc
- Any other tokens relating to early New Zealand

COLLECTABLES

- Albums & Accumulations of Pre 1920s Postcards (used or unused)
- Old Fountain Pens
- Small Chinese & Japanese Antiques
- Maori & Pacific Artefacts



No item too small for our consideration

WAR MEDALS ETC

- The New Zealand Wars & Boer War Medals
- 1st World War Medals
- 2nd World War Medals, Stars etc
- Orders and Decorations
- Korea & Vietnam Medals
- Antarctic or other Polar Medals
- Fire Brigade Medals
- Lodge Medals
- Shooting Medals
- Military Badges and all other Military Medals
- Gold returning Fob Medals or "Tokens of Honour" from residents of small town New Zealand

HISTORICAL MEDALS

- A&P Show- Gold, Silver & Bronze Medals
- Commemorative Medals & Medalets
- Prize Medals (Gold & Silver)
- Sports Medals (Gold & Silver)
- Life Saving Medals
- Shipwreck Medals
- Coronation Medals
- etc, etc, etc



JOHN BERTRAND (COLLECTABLES) LTD OUR BUYERS ARE IN YOUR AREA THIS WEEK

Region	Date	Venue	Time
WAIHI	Sat 6 June	Waihi Baptist Church Hall, 3 Gilmour Street	9 am to 10.30 am
TE AROHA	Sat 6 June	St John Ambulance Training Rooms, 33 Burgess Street	11.30 am to 1 pm
PAEROA	Sat 6 June	War Memorial Small Hall, 144 Normanby Road	2 pm to 3.30 pm
THAMES	Sun 7 June	Thames Citizens Band Hall, 301a Queen Street	10 am to 12 noon
COROMANDEL TOWN	Sun 7 June	Coromandel Citizens Hall, 455 Kapanga Road	2 pm to 4 pm
WHITIANGA	Mon 8 June	Whitianga Baptist Church, 112 Cook Drive	9 am to 10.30 am
TAIRUA	Mon 8 June	Tairua Rugby Club Old Gym, 3 Tokoroa Road	12 noon to 1.30 pm
WHANGAMATA	Mon 8 June	Whangamata Baptist Church Lounge, 301 Port Road	2.30 pm to 4 pm

WE WANT TO BUY - CASH-IN NOW



NO APPOINTMENT NECESSARY

Please note: If you sell anything to us, suitable ID is required. Please also bring your bank account details for the deposit of funds for larger purchases.

John Bertrand The Trusted Name In Numismatics Since 1965!

John Bertrand (Collectables) Limited
T: 04 232 9832 • E: info@bertrand.co.nz
Level 1 Harcourt's Building, 215 Main Road,
Tawa, Wellington 5028
PO Box 323, Wellington 6140



JOHN BERTRAND
COLLECTABLES LTD

Members of the Australasian Numismatic Dealers Association and the New Zealand Numismatic Dealers Association



Seismic changes for Paeroa RSA building

By ALICE PARMINTER

A nearly-\$760,000 makeover is underway at Paeroa's Returned and Services' Association (RSA) building on Belmont Rd.

Earthquake strengthening work began on the historically-listed building on May 25. The work is expected to take around four months.

However, the ground floor will remain open for use throughout, apart from the main dining room.

Appearance-wise, the building's exterior will remain much the same, with one exception - the RSA's mural.

"Unfortunately [the wall] was not sealed properly before being painted it, so the water comes in through the wall and blisters all the paint off in the men's toilet," RSA president John Hallett said.

"It has to be properly cleaned and sealed, which means we lose our mural."

Rather than try and restore the current painting, the association has opted to commission a new commemorative mural from Auckland artist Brigita Botma.

It will be the last part of the repairs to take place, along with refurbishment of the displayed artillery.

The bulk of the strengthening work, meanwhile, will involve reinforcement of the building's walls.

On the lower level, the walls will be pinned from outside using Python masonry screws, to strengthen and stiffen the double layer of concrete bricks with-



ABOVE: The old RSA mural will be replaced with one commemorating Navy, Air Force and Army personnel, medical staff, and animals lost in World War I. RIGHT: The exterior of the RSA will be repainted as part of extensive refurbishments in the next few months.

Photos: ALICE PARMINTER

in the building frame. The exterior walls will then be cleaned, replastered and repainted.

Upstairs, the work will be a little more intensive.

A former hotel, the upper level currently has several small, dilapidated rooms. The level has been closed for many years due to a lack of safe egress in the event of a fire.

The builders will be removing most of the upper interior walls and strengthening the top level from inside.

The upstairs space will then remain unfinished for the time being, John said, although RSA members have been throwing around ideas for possible use like function rooms or offices.

"The main goal was to get the building sound, safe, and fit for the future," he said.

"Next step will be to decide what to do upstairs. It will be a little bit of a blank canvas."

Other repairs taking place during the refurbishment include reinforcing the building's parapets, replacing the 100-year-old iron roof, installing new guttering and downpipes, and replacing the fire and burglar alarm systems.

The RSA had been fundraising for years to get the work underway, John said.

In the past seven years, RSA fundraisers - mostly Bingo nights - have raised \$160,000.

The association has also re-



ceived a substantial number of grants, including \$447,400 from the Lotteries Community Facilities and Heritage funds, \$20,000 from the Valder Ohinemuri Trust, and \$10,000 from the Hauraki District Council.

"I would very much like to acknowledge our sponsors," John

said. "Once you get some momentum going with these things, it's amazing how it builds.

"As soon as people heard we had that lottery grant, you could see the mindset change: 'oh this could really happen'.

"I'm absolutely thrilled."

cooperaitken accountants
THAMES | MORRINSVILLE | MATAMATA | HAMILTON

WAIKATO CHARTERED ACCOUNTANTS & BUSINESS ADVISORS

Creating freedom in your business.

p] 07 868 9945
e] mail@cooperaitken.co.nz

104 Sealey Street, Thames

www.cooperaitken.co.nz

TradeZone
Thames

IF IT MATTERS, IT'S TRADEZONE

IN STORE NOW

- Engineering & Welding consumables
- Extrusions - Fasteners
- Bearings & Belts
- Eziswap Industrial Gases
- Protective Wear
- Hand & Power Tools
- Keys, padlocks, locksmithing

CONTACT US: online@readbros.co.nz

SEE US AT: READ BROS. HARDWARE
308 Pollen St, Thames
www.readbros.co.nz • 07 868 6608

Snowden's - MENSWEAR -



Visit us and see our great range of classic Silverdale Knitwear.

Shown here is our classic merino V neck jumper.

Top quality

Proudly locally owned and operated for more than 50 years

520 Pollen St Thames,
Ph: 07 868 7056

www.snowdensmenswear.co.nz



BURTON'S BUTCHERY

YOUR COUNTRY BUTCHER @ SH26 Matatoki

Winner of Silver medal for Loin Bacon and Bronze medal for Streaky Bacon in the 2025 Bacon and Ham awards

QUALITY EVERYTIME

NOW WITH INCREASED CAPACITY FOR HOMEKILL

Still supplying homemade old fashioned sausages and small goods made on site.

Raffle Packs available

Open: Mon - Fri 7am til 5.30pm



FOR ALL YOUR CATERING NEEDS

Wedding, Funerals, Meetings, Team Building days, Parties
Any occasion you need catered.

50-seat function Room (Burton's Out the Back)

404 Pollen Street Thames

Ph: 0223809735 email: burtonsbistro.catering@gmail.com
website: burtoncatering.co.nz facebook: @burtonscatering

Lunch Bar Opening Hours: 7:30am-3:00pm Monday-Friday



Exceptional. Every day.

eves.co.nz



Now Priced

Paeroa
15 Junction Road

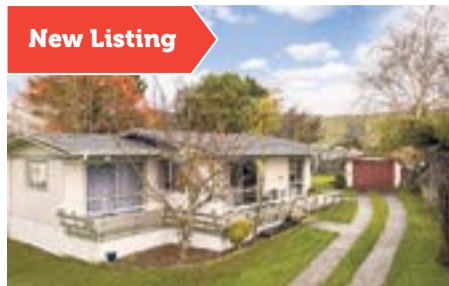
2 1 1 1

New Price to Entice, Move Now

This two-bedroom cottage offers easy, practical living on a fully fenced section, perfect for first-home buyers, investors. Inside, find a functional galley-style kitchen. Spacious lounge with heat-pump. Call Dynasty to view.

Asking Price \$449,000
View by appointment
Dynasty Holtz 022 124 1186
dynasty.holtz@eves.co.nz

eves.co.nz/ewa21605



New Listing

Waihi
38 Princes Street

3 1 1 1

Big Backyard Dreams Begin Here

This well-presented three-bedroom family home has already had work done, with renovated living spaces, an open-plan lounge, dining, kitchen, and bathroom, creating a fresh and inviting feel throughout. Offering practical family living.

Asking Price \$599,000
View by appointment
Lester Mullan 021 121 4940
lester.mullan@eves.co.nz
Dynasty Holtz 022 124 1186
dynasty.holtz@eves.co.nz

eves.co.nz/ewa21705



New Listing

Waihi
33 Bradford Street

3 1 1 1

Fresh Updates, Generous Section

Positioned on a sizeable 1,016sqm (approx.) section, this three-bedroom home offers the perfect balance of modern updates, outdoor space, and everyday comfort. With major renovations already completed, much of the hard work has been done.

Asking Price \$649,000
Phone for viewing times
Brooke Edwards 027 435 5905
brooke.edwards@eves.co.nz

eves.co.nz/ewa21712



Waihi
33 Walker Street

3 1 1 2

The Right Price Is Here

Perfectly positioned in a sought-after college zone, this two-level family home presents an opportunity not to be missed. Set on a large, flat, fully fenced section, it offers three bedrooms, spacious living with a heat-pump, and sunny decks.

Asking Price \$635,000
View by appointment
Dynasty Holtz 022 124 1186
dynasty.holtz@eves.co.nz

eves.co.nz/ewa21399



New Listing

Waihi 542 Waitekauri Road, Waikino

1 1 1 2

Country Calm, Modern Charm

Hidden away in a peaceful pocket of countryside, this unique 1.12ha (more or less) lifestyle property offers privacy, tranquillity and stunning rural and bush views. Completed in 2021, the modern shed-style home features open plan kitchen, dining and living with wood burner, heat pump and seamless flow to a spacious covered deck. Currently configured as a one-bedroom home with bathroom/laundry, there is potential to add a second bedroom. Solar panels support efficient living and internal access double garaging adds convenience. A stream winds through the property with walking tracks to explore. The property also includes a separate double garage with additional living space, utility shed with bathroom, spa area, two-bay shed and two containers used as a sleepout and workshop/storage. A peaceful retreat with bush, grazing and endless flexibility.

For Sale by Deadline Private Treaty Closes 1pm, Thurs 25 June (unless sold prior)

View by appointment

Lester Mullan
021 121 4940
lester.mullan@eves.co.nz



eves.co.nz/ewa21744

Backlash sees 'political suicide' mowing proposal cut

By KELLEY TANTAU

After nearly an hour of heated debate, Thames-Coromandel District councillors have mown down a controversial proposal to reduce grass cutting across the district, siding instead with vocal community opposition.

As part of its draft 2026/27 annual plan, which targeted a rates increase of no more than 3.8 per cent, the council proposed reducing the frequency of mowing across parks, cemeteries, road berms and medians, while replacing seasonal flower beds with simpler, lower-maintenance planting.

Some shrub gardens would also be removed or maintained less often, and the council would stop its annual Onehunga weed spraying programme. The changes, which were estimated to save up to \$450,000 annually, would lower the average rates increase by \$17.94, or 0.38 per cent. But at its full council meeting on May 26, South Eastern Ward councillor Alison Smith said she would not support the mowing reductions, calling them "political suicide".

She said she was "really surprised" to read that the recommendation put forward to council was to proceed with the option to reduce mowing services, saying it was "at exact odds" to what she was hearing from a number of communities.

"Are you saying that you took on board the feedback that you received from the community?" she asked staff. "Because the feedback I received was very loud and clear that they did not want a reduction in mowing services. I don't understand

why we would pursue something that communities have made very clear that they do not wish to see happen."

Staff said they "absolutely" read and considered the feedback - in which there were 921 responses across all consultation points - but noted it was not unanimous or conclusive. Instead, they assessed whether the feedback warranted changing the council's preferred direction of keeping rates increases below 3.8 per cent.

So, Mercury Bay ward councillor Flemming Rasmussen put forward an amendment to the recommendation:

"The feedback I received was very loud and clear that they did not want a reduction in mowing services."

- Alison Smith

to keep the current garden and mowing schedule, and direct staff to identify and implement other dollar-for-dollar (\$450,000) annually recurring operating cost savings, "thereby eliminating any monetary impact" of not adopting the preferred service cuts.

It was backed by fellow Mercury Bay councillor Tony Brljevič, councillors John Grant, Robert Ashman, John Freer, and Mayor Peter Revell.

But some councillors raised concerns about the implications of directing staff to find alternative savings, and the uncertainty around where those cuts could fall. Councillors Robyn Sinclair, Alison Smith, Michael Barlow, Greg Hampton, and Martin Rodley voted against the motion.

Ultimately, the decision means residents are unlikely to see any changes to current mowing and garden maintenance services, although council staff will now need to identify the savings elsewhere.



The pink ribbon lunch was a huge financial and social success.

Photos: SUPPLIED

Tickled pink for a good cause

By ALICE PARMINTER

Tina Moir and Tracey Traynor's annual Pink Ribbon Fundraising Lunch was a stellar success, raising \$5500 for the Breast Cancer Foundation.

The lunch, held on May 23 at the Turua Community Hall, was the third time the mother-and-daughter pair have held the event. Over the past three years, they have raised a total of \$13,343.05 for the foundation. "I'm a breast cancer survivor, my mother died from breast cancer, I had an auntie with breast cancer," Tina told *The Profile*.

"Now I have a niece with breast cancer. So it's quite an important foundation for us to support."

With more than 3700 people being diagnosed with breast cancer every year, Tina said the cause is also one which is close to many people in her community.

"We've got quite a few in our neighbourhood itself that have had it as well." This year, the ladies' event was attended by over 100 people, with some travelling from as far away as Queenstown and Hastings.

Guests were served a hot lunch - ham, roast mutton, sausages done two ways - and dessert, and there were numerous auctions,



Crystal, Valmae, Carmen "pink it up".

raffles, and spot prizes.

More than 50 sponsors, mostly local businesses and families, contributed to the success of the day. Others pitched in to cook and serve.

"We thank all of our sponsors, our helpers, and our guests," Tina said.

"It's a very worthwhile cause and [we've had] a pretty awesome response."

SHOULD WESTERN BAY MERGE WITH OTHER COUNCILS?



For more information and to provide feedback online, scan the QR code or visit:

yourplace.westernbay.govt.nz



Western Bay of Plenty District Council

Beds•R•us

Snooze & Save

Up to 50% off Selected Sleepyhead Beds.



ONLY \$479

Elements Wave 3 'Grab & Go' Queen Mattress



Available rolled in a bag for easy transport. Grab one in-store.

ONLY \$1,149

Wonderest Sleep Easy 3 Queen Bed



A durable bed with the comfort of pocket spring technology.

NOW \$1,699

30% off.

Chiropractic Epic Sleep Queen Bed



Featuring Torquezone, a coil spring system for targeted postural support.

NOW FROM \$2,799

50% off.

Serenity Eden Queen Bed



Featuring temperature control for a premium sleep experience.

NOW \$4,149

50% off.

Chiropractic HDX Reflex Queen Bed



With the addition of KüilKöte to help maintain a comfortable temperature.

View the range at bedsrus.co.nz



24 months interest free on in-store purchases \$999 & over.*

BEDS R US THAMES
205 Sealey Street,
Thames
PH 07 868 6128

BEDS R US WHANGAMATA
419 Port Road,
Whangamata
PH 07 865 9027

BEDS R US WAIHI
94 Seddon Street,
Waihi
PH 07 863 8787

BEDS R US WHITIANGA
4/9 Joan Gaskell Drive,
Whitianga
PH 07 866 5726

Beds•R•us
Where dreams begin.

Big Winter Sale ends 23.06.26. Discount offers apply to selected beds and bedding only, prices as marked. Offers exclude Everyday Dream prices, run outs, clearance stock (unless otherwise stated) and not to be used in conjunction with any other offer. See in-store for details. 30-Day Comfort Guarantee available for in-store purchases only. We reserve the right to correct errors and misprints and to change product specifications. All products are advertised in good faith and will be available, except in circumstances beyond our control. Product ranges vary between stores and some products are available in selected stores only. *24 months interest free is available on Long Term Finance (LTF) in-store purchases \$999 & over until 23.06.26. Offer excludes Everyday Dream Prices, run outs, clearance, layby and not to be used in conjunction with any other offer. Lending criteria, \$50 annual Account Fee, fees, Ts&Cs apply. \$55 Establishment Fee applies to your first LTF transaction, \$35 Advance Fee applies to subsequent LTF transactions. Min payments of 3% of the monthly closing balance or \$10 (whichever is greater) are required throughout interest free period. Paying only the minimum monthly payments will not fully repay the loan before the end of the interest free period. Standard Interest Rate of 28.95% p.a. applies to outstanding balance at the end of LTF Interest Free Period. Other interest rates and fees may apply. Rates and fees subject to change. New customers need to apply and be approved for a Q Mastercard credit card. Columbus Financial Services Limited and Consumer Finance Limited reserve the right to amend, suspend or terminate the offer and these Ts&Cs at any time without notice.

Laundry day proves fatal for Thames woman



As part of a Valley Profile series, **MEGHAN HAWKES** explores our local history by seeking out stories of life and death in the Thames Valley

Catherine Lawless was hanging out the family laundry at her Tararu home on a December afternoon in 1891. A good drying wind was blowing through the flapping sheets and tablecloths.

Catherine was married to Thomas Lawless, an Irishman who had immigrated to New Zealand as a child with his family. He came to Thames in 1867 to try his hand at mining before moving to Coromandel where he ran several hotels. In 1876 he and Catherine, also from Ireland, married and the first of their several children, Ellen, was born. Thomas was a keen cricket player and on moving back to Thames in 1877 he set up as a Tobacconist in Brown St, selling cricketing equipment as well. He sold his business in 1881, becoming publican of the Empire Hotel.

The next year he built a grand new hotel at Waiorongamai south of Te Aroha. After a few years and a decline in the hotel trade Thomas went bankrupt. He picked up a variety of jobs before returning to Thames in 1887 to manage an



aerated water and cordial business. By 1890 Thomas was publican of the Prince Imperial Hotel but had trouble getting a licence.

The police reported that the hotel was in an indifferent condition with barely any furniture. There was no sleeping accommodation for the public. Prohibited persons had been found on the premises.

After some conversation the licence was granted subject to the hotel being put in repair.

The couple now had seven out of 10 surviving children. The year before Catherine had premature twins who died within hours of birth; in 1887 a son had died at one day old. Catherine's domestic tasks were many and this wash day the busy 39-year-old did not realise how close to the outdoor copper fire she was. A spark was blown on to her print dress which ignited. Catherine ran for help down the road towards Tararu

against the wind.

Frederick Jackson, a miner, was sitting on his verandah talking to Albert Poulgrain when he heard Catherine coming out of her house. The men intercepted her, beating out the flames before getting a blanket from Mr Ivy which they wrapped around her and soaked with water. Four or five of the neighbours then carried her into her own house. Thomas came home and immediately sent for Dr Callan. Over the next 24 hours Catherine did not improve and she was taken to Thames Hospital, where she died about four hours after admission.

At the inquest the Coroner said that many in the community felt there was no need for an inquest, but it was necessary to comply with the Formulae on the subject.

He said that at this time of the year, during the warm weather, it was customary for women to wear

print dresses while washing, but if woollens were worn they would be safe from fire if soaked in sugar of lead, alum, and water. A verdict of accidental death was given.

Catherine was well respected and all classes of the community were at her funeral. She was buried at Shortland cemetery. Thomas and the children moved to Paeroa where he worked as manager of Mr Smith's ironmongery business.

In 1895 Ellen, known as Nellie, was getting dinner ready when her dress caught fire, and she was enveloped in flames. The 19-year-old immediately rushed outside, and threw herself into a pool of mud, extinguishing the fire. Dr Forbes used all possible means to alleviate her injuries.

Nellie was later reported to be recovering and quite out of danger, having survived the peril of keeping the home fires burning.

Chris' Quiz

Weekly quiz compiled by Chris Parminter

1. Rory and her mother Lorelai, were the central characters in which TV show?
2. In 2012, Sydney's *Daily Telegraph* awarded which animal the title of Sportswoman of the Year? a) A greyhound, b) a horse, or c) a pigeon?
3. Celine Dion represented which country when she sang in the Eurovision Song Contest in 1988? a) Canada, b) France, or c) Switzerland?
4. Which word beginning with M is both a string instrument and a kitchen tool used for slicing and cutting juliennes?
5. Which country's flag features the Yin and Yang symbols? a) Japan, b) South Korea, or c) Taiwan?
6. "Plyscrapers" are tall buildings made of what material?
7. Which of the planets in our solar system is closer to the size of Earth? a) Mars, b) Saturn, or c) Venus?
8. Emperor Palpatine is a character from which movie franchise?
9. The United States will celebrate its semiquincentennial on July 4, which will mark how many years since the signing of the Declaration of Independence?
10. What was unusual about the marriages of Albert Einstein, Charles Darwin, Edgar Allan Poe, and H.G. Wells?

ANSWERS: 1. Gilmore Girls; 2. B) A horse; 3. Specifically Black Caviar; 3. c) Switzerland; 4. Mandolin; 5. b) South Korea; 6. Wood. They have recently been built up to 85 metres high; 7. c) Venus; 8. Star Wars; 9. 250 years; 10. They all married their first cousins.

LEFT BANK THEATRE

Ph: 07 868 3142 www.leftbanktheatre.co.nz 659 Pollen St, Thames

Movies from Thursday 4 June to Wednesday 10 June

For times, see our website, pick up a brochure by the cinema doors, or email or phone us.

The Christophers (100 mins) M. Comedy starring Ian McKellen. The estranged children of a once-famous artist hire a forger to complete his unfinished works so they can be "discovered" and sold after his death.

Power Ballad (98 mins) M. Feel-good movie of the year. Musical comedy drama. Follows a wedding singer and a flagging pop star who come together to write a song to comedic consequences.

Tuner (109 mins) R13. A talented piano tuner's meticulous skills for tuning pianos lead him to discover an unexpected aptitude for cracking safes, turning his life upside down.

Words of War (117 mins) M. The true story of journalist and human rights activist Anna Politkovskaya who fights to be a voice of truth for the Russian people in the midst of the war in Chechnya.

Sgt Haane (88 mins) M. True WWII story. The story of Sgt Haane of the 28th Māori Battalion, who leads a group of Battalion soldiers – all related, all cousins – up a precipitous cliff face and into the pages of history.

Caterpillar (97 mins) M. Follows a daughter, mother and grandmother (who has an obsession with raising monarch caterpillars and one day seeing the butterfly migration in Mexico) living in a leaky Wellington villa.

The Sheep Detectives (109 mins) PG. About a shepherd (Hugh Jackman) who reads detective novels to his sheep, assuming they can't understand. A mysterious incident occurs, and the sheep become detectives.

A Museum of Humanity: The Time Traveller's Guide to Hamilton Gardens (73 mins) G. The story of how a city rubbish dump was transformed into a collection of gardens from ancient Egypt to the surreal future.

Coming from Thursday 11 June: Disclosure Day: Steven Spielberg blockbuster with proof of alien life.

Moss & Freud: A biopic about the life of supermodel Kate Moss. **The Way:** An unlikely quartet of misfits from around the world on a pilgrimage on the Camino de Santiago in France and Spain (in English).

Scott Simpson
MP for Coromandel

Contact me anytime
0800 550 330 • scottsimpson.co.nz
mpcoromandel@parliament.govt.nz
f [scottsimpsonmp](https://www.facebook.com/scottsimpsonmp)

National
Authorised by Scott Simpson, Parliament Buildings, Wellington.

Hauraki District Council

PAY RATES EASY USING PAYBLE

PAY YOUR RATES YOUR WAY

Payble makes it simple.

- View your property and water rates bills
- Choose a payment option that suits you best
- Manage payments easily in one place

Stay up to date

Scan the QR code to find out more about Payble
www.hauraki-dc.govt.nz/payble

SIGN UP TODAY!

1. Visit <https://pay.hauraki-dc.govt.nz/>
2. Enter your Assessment Number
3. Enter your Sign-up code*

*Get your sign-up code by calling 07 862 8609, visiting one of our offices or dropping into an Information and support session.

Find out more

Come along to our information and support sessions at the Waihi Library and Service Centre, Paeroa Library and Ngātea Service Centre and Library between 10am-12pm on:

Tuesday, 2 June	Friday, 12 June
Thursday, 4 June	Tuesday, 16 June
Monday, 8 June	Tuesday, 23 June
Wednesday, 10 June	Tuesday, 30 June



UNHEMMED
WEARABLE ART SHOW

THURSDAY 11TH JUNE
WAIHĪ COLLEGE - 6PM

BUY TICKETS HERE:

<https://events.humanitix.com/unhemmed>



Waihi College is proud to present three exciting upcoming cultural events celebrating the creativity and talent of our rangatahi.

Unhemmed – a spectacular wearable art showcase featuring stunning student creations on 11th June: <https://events.humanitix.com/unhemmed>

Revenge of the Amazons – our hilarious and action-packed school play running from 24th-26th June: <https://events.humanitix.com/revenge-of-the-amazons/tickets>

Pūrakau of Matariki – celebrate Matariki with kai, kōrero and connection on 24th July: <https://events.humanitix.com/pur-akau-of-matariki.../tickets>

Tickets available now via Humanitix.
Scan the QR codes on the posters or visit the ticket links to secure your seats.
Come along and support the arts at Waihi College!



REVENGE OF THE AMAZONS
by JEAN BETTS
directed by INGRID BERRY

24TH, 25TH & 26TH JUNE
WAIHĪ COLLEGE SCHOOL HALL
7PM

SCAN TO GET TICKETS


OR VISIT:
<https://events.humanitix.com/revenge-of-the-amazons/tickets>



The Purākau of Matariki
a journey through kai
Friday 24th July, 6PM
\$35 per ticket

Scan the QR code or head to link for tickets:

<https://events.humanitix.com/pur-akau-of-matariki/tickets>

Celebrate Matariki with kai, kōrero and connection.
He whetū, he mātamātanga, he oranga.

Health & Wellbeing

ADVERTISING FEATURE



Microsuction at EarClean

The safest and most effective way to reclaim hearing is through the process of ear microsuction. That's where EarClean comes into the mix.

"We're a necessity at the moment. We definitely need more practitioners," owner Natalie Ross said.

Microsuction is a safe and effective method for removing earwax, debris and foreign bodies from the ear canal.

The ear nurse said she had a family member who needed to get her ears cleaned regularly due to wax build-up. "She always finds it hard to find an appointment."

It was the motivation Natalie needed to kickstart her own business a little under a year ago. "I've got a clinic in my house, and I also offer mobile services in areas of the Western Bay. "Having the mobile service is very unique. I've just been at a lady's house who's had a stroke, leaving her house is difficult at the moment. Receiving a mobile service works perfectly for her," she said.

It's the kind of service that helps people who are vulnerable or cannot make it to the clinic, she said.

A future goal is the incorporation of more community accessible clinics and to offer her services in an affordable way. "Maybe for groups of people

that find it hard to access healthcare, for whatever reason."

She has performed clinics at some outdoor markets in Tauranga which were highly successful. She even provided free earwax checks prior to see if treatment was actually needed.

One client left a testimonial on Natalie's website stating that they experienced severe hearing loss to the point where they thought they would need hearing aids.

"I am forever grateful for going to see Natalie at EarClean who cleaned and removed from my ear canal, a large plug of old ear wax. She has now changed my world. I went from the kids yelling at me to 'turn down the stereo' full volume to hearing life in surround sound and can hear the birds singing in the mornings again," they said.

Natalie noticed that often people didn't know they had a problem with earwax buildup.

"They don't know that their hearing's reduced significantly, [it's] so gradual."

The best thing people can do is reach out and book in for an assessment with Natalie.

DETAILS: Book an appointment with Natalie at EarClean online at: www.earclean.co.nz

Weight loss presentation planned

Save the date and join us for an Educational Evening with Dr. Hayley Scott and her presentation on "Lose The Weight, Gain A Lifestyle". Once you have achieved your weightloss, how do you maintain it without medication? Door entry is by donation with all proceeds going directly to our Ngatea Volunteer Fire Brigade. It is to be held on June 8 at 6pm at Health Ngatea.

A REMINDER WITH WINTER APPROACHING Viruses can cause a wide range of infections such as colds and flus. A healthy immune system can fight off most viral infections, but some viruses cause serious disease. Viruses spread easily, so it's important to practice good hygiene and stay away from other people when you are infectious. Antibiotics only kill bacterial infections - they can't treat a viral infection.

Treatment for most viral infections aim to ease the symptoms while you wait to recover.

These include resting at home, staying well hydrated with fluids and taking paracetamol to relieve pain and fever.

For our patients, if you need to be assessed or reviewed, please use our phone triage system as the first point of contact so we may make a plan to take care of you.

Presenting at the practice puts other people at risk including the Staff. Keep an eye on the elderly people in your neighbourhood.

Contact us on 07-8677521.

- Supplied by Health Ngatea.



Transform Your Ears, Transform Your World

New clinic bringing Ear Health to the Western Bay

Ear Clean

- Microsuction Earwax Removal
- Registered Nurse-led care
- Flexible Appointments
- Mobile Service Available
- Local to You

Book online: www.earclean.co.nz

Providing much-needed ear care for locals

Classic to contemporary styling

All aspects of colouring

Blonding specialists

"City styling in the heart of Coromandel"

558 Pollen St, Thames. Phone 868 6105 www.walterandco.co.nz
www.facebook.com/walterandcothames Instagram@walter_andco

Flu vaccines

Available now at your local Whānau Health Centre

Flu vaccines are FREE for some people, including: all those aged 65 and over, hapū māmā, and people with eligible health conditions.

Whānau Health Centres

Our Whānau Health Centres provide easy access to a range of health services such as GP or nurse appointments for the whole whānau.

Flu vaccines are available now for all whānau enrolled with our Whānau Health Centres.

Waea mai – call us on **0508 835 676** to book your vaccination.

0508 835 676
kiaora@korowai.co.nz
korowai.co.nz

The Eye Place Paeroa, Waihi, Whangamata & Te Aroha

- Comprehensive eye care for the whole family
 - Exclusive Nikon lens provider
 - Prescription safety glasses
- Therapeutic-prescribing optometrists
 - Children's vision
 - Specialist contact lenses
- Glaucoma & Macula Assessments
- Myopia-prevention services

07 862 8978
www.eyeplace.nz

HEALTH & WELLBEING

SPECIAL OFFER!

BOOK YOUR PLACE TODAY!
 Contact Nikki
022 130 3885
nikki@valleyprofile.co.nz

Book your advertisement in our monthly Health & Wellbeing page for six issues and receive a free 1/4-page editorial space to showcase your business

Terms & Conditions apply

There's 'a little bit of everything' at The Shed

It's been a thrilling couple of months for Paeroa business The Shed & Co.

Easily recognised as the big shed on the outskirts of town on Coronation St.

The Shed & Co is overflowing with goods for vintage lovers, renovators, indoor and outdoor connoisseurs and those who enjoy "a little bit of everything".

Afterall, it's been known to have the most diverse range of all sorts under one roof, dare we say in New Zealand?

That was the case until recently. Now The Shed & Co has expanded into the Paeroa township and includes a couple of new town locations in the old Regent theatre building, new faces have joined the team, new signs are on their way, a bit of paint has brightened the old Junk & Disorderly shop up.

Owner Sam Anison and manager Connie Riddle said the mission now for 58 Coronation St is to continue to provide products fit for most home DIY projectors, the one-off old bits you may not find in the larger hardware stores.

Tools, screws, timber – posts, fence palings, decking, plumbing, gardening, clear lite, corrugated iron. It's the place for people to remember things of the past.

"We get wanderers. We get reminiscers. Sometimes we feel it's on the tour list as a must see to believe."

Coronation St will also act as a warehouse for staff to sort through products to share out across all the stores, which is a big part of the job.

The team, alongside Sam and Connie, also includes Sandy, Nicole, Sarndra, Sue and Stu.

Meanwhile, across town at 80-84 Normandy Rd, The Shed & Co's retail stores are now up and running, carefully curated with more refined collections for styling the home right in the centre of Paeroa.

"A lot of the nice things used to get lost in the mix at The Shed on Coro, now Nicole stagges the shops beautifully. People couldn't picture it in their homes. But when you see it set out nicely, it makes a difference.



The Shed & Co in Paeroa has expanded and now has three locations at 58 Coronation St and 80-84 Normanby Rd, Paeroa. Customers can expect to find "a little bit of everything", a team of friendly staff and a wonderland of interesting things. Photos: DAVIDDA HIKATANGATA/SUPPLIED

When you put it in the right place, it pops."

Known to the team as shop 2 on the main street and to the left down the breezeway once known as Junk & Disorderly, as you walk down the slope, light pours in from the windows at the back of the room. The high ceiling and walls are a feature to see, you will see the familiarity of Sam's wooden boxes lining the left-hand side filled with an assortment of trinkets, cameras, pottery, frames, toys and candelabras, as you move around.

Sam's wooden shelving continues, housing the library books, silver, china, haberdashery, vinyls, DVDs and CDs, mirrors, lamps, model ships, artist prints just waiting to be discovered. Sam's clock collection on display. Second-hand goods are the future in this ever-increasing financial time.

We are often asked where we get everything – people - downsizing or sick of the clutter. Humans - all buy, all use it, all discard it - then Sam buys it, sells it on to be repurposed or be re-



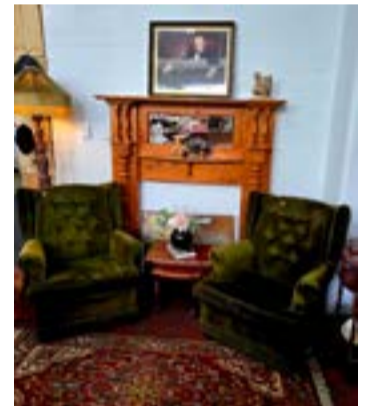
loved – big or small. Sometimes it's barely used, we try to keep everything at a fair and reasonable price.

Whether people are looking to find something to decorate the home, a gift for a loved one, or the missing piece for a home project - there's a wonderland full of treasure and everything you need at The Shed & Co's shops. Make it your day out and enjoy the Paeroa Shops and Cafés.

DETAILS: Visit The Shed & Co. 5 days a week - town stores at 80-84 Normanby Rd, Paeroa. Open hours: 9.30am to 4pm Tuesday to Saturday (Closed Sunday & Monday). Parking at rear on Willoughby Street.

7 days a week - 58 Coronation St, Paeroa, open hours: 8.30am to 5pm daily. Follow on Facebook: The Shed & Co.

- Supplied by The Shed & Co



The Shed & Co

COLLECTABLES
2ND HAND WARES
FURNITURE
& MORE

Follow us on facebook

022 601 3656

...Shops & Sheds full of interesting things.



Meet the LOCALS



Greetings to all our new residents who are settling into our region. I'm sure you've already received a warm welcome from the local community and are making plans to immerse yourself in everything we have to offer.

The Coromandel electorate represents a very large geographic footprint. Its boundaries stretch from the top the Coromandel Peninsula, down to Omokoroa in the Western Bay of Plenty, across the fertile Hauraki Plains, and up

the west side of the Firth of Thames.

Each of these distinct areas are home to thriving communities and passionate locals who are doing their bit to make their mark on the world. From innovative businesses to dedicated community groups, there is so much to experience in our region. And of course, we have a beautiful natural environment which is just waiting to be explored.

My family has been calling the Coromandel

home for generations and it's fair to say that I share the common feeling that there's no better place to live, work, and play.

I simply encourage everyone to get out there and experience it for themselves.

I'm always keen to hear from people. If you have any issue you wish to discuss or simply an opinion you want to share, call 0800 550 330 or email mpcoromandel@parliament.govt.nz.

- Coromandel MP Scott Simpson



Welcome to all you new families from the team at Hauraki Plains Motors. Call in and see us for all your farming and servicing needs

FARM MACHINERY SPECIALISTS



Hauraki Plains Motors

1 Pipiroa Road, Ngatea • Ph 07 867-7021

A/Hrs Mike 027 440 4681

Miles 027-227-1121

Email: admin@hpmotors.co.nz



cooperaitken accountants
limited
creating freedom in your business

PROUD TO SUPPORT OUR LOCAL COMMUNITY

www.cooperaitken.co.nz

TradeZone

Thames

Engineering & Industrial Supply Specialists



**THE SEASONS DON'T WAIT.
NEITHER SHOULD YOU.**

IF IT MATTERS, IT'S TRADEZONE.



**308 Pollen Street, Thames
07 868 6608**



tradezone.co.nz

Meet the LOCALS

ADVERTISING FEATURE

Welcome to Hauraki and Thames-Coromandel districts



**Thames-Coromandel district
Mayor Peter Revell**

My warmest welcome to our beautiful district.

Whether you're new to our area or have proudly called this place home for many years, we're truly pleased to welcome you.

There's a big and exciting environment for you to explore – history, culture, scenery, adventure, fishing, outdoor pursuits – all on our doorstep.

Please take some time to make the most of one of New Zealand's most sought after areas to live, work and play.

And to help you our Council has put together a digital tracks and trails guide. You can find it on our TCDC website, and additional information on the Destination Hauraki Coromandel website, www.thecoromandel.nz.

If you've been watching the news lately, you'll know that the Government has advanced plans for local government reform that may result in a significant transforma-

tion of how local government is structured throughout the country.

But I can assure you that no matter what the outcome of government reform, the essential services that we all rely on - roading, water, removal of waste, parks and reserves, facilities, and regulatory functions - will carry on.

In the coming weeks and months, you'll hear about opportunities to get involved in Council planning for the long term and the near term.

Our communities' input is needed to make sure we continue to deliver the services and infrastructure we need, and to guide our decision-making over the coming months and years.

I encourage you to get involved in these planning activities if you can, so that your voice is heard. Life in Thames-Coromandel is about more than just breathtaking beaches and picturesque sunsets.

It's found in the friendly nods at the supermarket, children riding their bikes to school, and the comforting smell of fish and chips on a Friday evening.

So, grab your jandals, keep an eye on the tides, and take full advantage of all that our stunning corner of New Zealand has to offer. And if you ever need assistance, don't hesitate to reach out - locals are always happy to lend a helping hand.

If you have any questions or concerns about Council services or facilities, please contact us. Visit our website at www.tcdc.govt.nz, follow us on Facebook, or call 07 868 0200—we'd love to hear from you.

*Ngā mihi,
Mayor Peter Revell*



**Hauraki district Mayor
Toby Adams**

Welcome to the Hauraki District. Nau mai, haere mai.

Whether you've arrived with a truck full of furniture, farm gear, kids, pets, or simply the excitement of a fresh start, we hope you quickly feel at home in our special corner of Aotearoa.

Ours is a district built on strong communities, good neighbours, and people who genuinely care about one another.

Dairy farming has a long and proud history here, and for many people, the rhythm of rural life is what makes this place so special.

Whether you're on the farm, in town, by the coast, or somewhere in between, we know settling into a new area takes time.

And if there are days when pulling on the gumboots feels a bit harder, please know there is support around you.

Our Council team is always happy to help point you in the right direction

The Waikato Hauraki Rural Support Trust is there for our rural communities too.

Better yet, come and say hello in person. We'd love to meet you.

There's a lot to love about life here.

From the stunning coastlines of Kaiaua and Whiritoa to the rugged beauty of the Karangahake Gorge, you'll find fishing, biking, walking and no shortage of outdoor adventures.

Great local cafés, markets and sports clubs mean there's always something happening close to home.

One of the best ways to feel part of the community is simply to show up.

Once the cows are settled, the shed is sorted, and the boxes are unpacked, look up your local school, sports club or community group and introduce yourself.

You don't have to be here long before people start waving from the roadside or stopping for a chat at the local shops.

Before you know it, there'll be a Hauraki-shaped place in your heart.

We also encourage you to download the Antenna app to stay up to date with local alerts and Council updates relevant to you and your area.

Most importantly, we hope Hauraki quickly starts to feel less like somewhere new and more like home, creating lasting memories here with your whānau and friends.

Our team is here to help. Don't be a stranger.

For more information on Hauraki district services, visit Hauraki District Council website, follow us on Facebook, or phone 07 862 8609 or 0800 734 834.

Toby Adams, Mayor, Hauraki District Council

Nau mai haere mai Hauraki District



Welcome to Hauraki District

From the coastlines of Whiritoa and Kaiaua to the rich farming land of the Plains and the historic heart of Paeroa and Waihi, Hauraki is a district built on strong communities, hard work, and connection to place.

People come here for many reasons. Lifestyle, family, business, farming, outdoor spaces, and a sense of belonging all draw people to Hauraki. What connects us is a shared responsibility to look after the things that matter most: our people, our environment, our infrastructure, and the future of our communities.

As our district grows and changes, Council continues to invest in what keeps Hauraki a good place to live.

Connected with us

Get real-time alerts on road closures, water outages, weather warnings and local notices, straight to your phone. Download the **Antenna** app free on Google Play or the App Store.

Kōrero Mai is where you can follow projects, share feedback and have your say on future planning. Visit letstalk.hauraki-dc.govt.nz

Sign up for our **e-newsletter** for regular updates from across the district - <https://www.hauraki-dc.govt.nz/council/newsletter-signup>

You can also **visit** us at our service centres in Paeroa, Ngātea or Waihi, follow us on Facebook at facebook.com/HaurakiDistrictCouncil, or visit our website www.hauraki-dc.govt.nz

Hauraki Plains adaptation planning

Council is working with farming communities, mana whenua and technical experts to assess future flood risk and explore options for the Plains. Follow project updates and have your say at Kōrero Mai letstalk.hauraki-dc.govt.nz

Water resilience on the Plains

Recent upgrades to the Plains water network have improved resilience, including new raw water storage tanks at Kerepēhi and ongoing pipeline renewals.

Dairy operations, irrigation systems and stock water all draw heavily on the network. If your operation relies heavily on the network, keeping at least 24 hours of on-site storage is a simple way to protect yourself during dry spells or peak demand periods.

Find practical water-saving tips and project updates at www.hauraki-dc.govt.nz/water

Rural living

Farming in Hauraki means sharing roads, waterways and infrastructure with neighbouring properties and communities. Stock crossing permits, drain and stopbank responsibilities, and rural bylaws all affect how you manage your land.

If you have drains, stopbanks, culverts or pumps on your property, your responsibilities are set out on our website www.hauraki-dc.govt.nz/rules-regulations-licences

Refuse transfer stations and recycling

Hauraki's transfer stations in Paeroa and Waihi accept green waste, scrap metal, wire fencing (posts and battens removed), tyres (up to five free per visit), batteries, oil, e-waste and small quantities of hazardous household waste including herbicides, pesticides and solvents.

Farm plastic and agricultural container recycling is available locally through the Agrecovery programme.

Visit www.hauraki-dc.govt.nz/rubbish-recycling for locations, opening hours and disposal information.

Working dog registration

Registering your dogs means they can be identified and returned if they stray. Your registration fees help fund the animal control services that protect stock from roaming dogs across our district.

If you have more than three dogs, you pay the standard fee for the first three and a discounted rate for each additional dog. Puppies need to be registered from three months old.

Register online or at any of our service centres in Paeroa, Ngātea or Waihi or visit www.hauraki-dc.govt.nz/rules-regulations-licences/dogs-other-animals



Meet the LOCALS

ADVERTISING FEATURE



A legacy: HG Leach & Co

For more than 70 years, local business HG Leach & Co has built a strong reputation supplying aggregate and quarry products to farms, contractors and the wider Valley community.

From humble beginnings in 1952 as a drainage and dragline business, the company has grown into a multi-generational quarrying operation that continues to play an important role across the region today.

As a leading supplier of aggregates, HG Leach & Co products are used in everything from local roads and driveways to farm races, drainage projects and walking tracks throughout the Valley.

Chief Operating Officer Mark Baillie says being part of the community is something the business is proud of.

"Not only as a supplier, but also as an employer and community sponsor," he says.

HG Leach & Co currently operate three local quarries and produce a wide range of products including roading aggregate,

drainage metal, basecourse aggregates, rip rap and farming aggregate for races and tracks.

From farm drainage and shed foundations to large-scale infrastructure projects, the company supplies materials for projects of all sizes.

Baillie says reliable service and strong relationships have always been central to the business.

"We're lucky to have built a reputation for great product and dependable service over many years," he said.

"Whether you're improving a farm race, building a driveway or managing a major roading project, we pride ourselves on providing the right products and service for the job."

"We're proud to support both long-standing locals and the new families choosing to make the Valley home, and we look forward to continuing to serve the community for years to come."

-Supplied by H.G Leach & Co

Protecting children from harm

CAPS Hauraki has a vision that every child is safe, loved and respected within communities that are nurturing and thriving. It's a journey and it takes us all to get there.

You can talk to us about the 'tough stuff' without concern that you'll be judged. We'll listen and offer information that supports you to choose what happens next.

Some of the questions people ask us are:

How do I keep myself and my kids safe from sexual and family violence?

How do I make it stop if it's already happened or happening?

How do I heal and move on to the life I want for me and my kids?

If CAPS don't have the service I need, where do I go?

We don't have all the answers, but we do care and will do our best to help or point you to someone else who can.

CAPS employs a team of experienced and passionate people, who turn up every day because they want to make a difference within their community.

Some of the team have degrees, many have faced their own challenges and all stand ready to walk alongside you through the tough stuff.

We have a list of services that we could give, but better still why not give us a call and let us know what you need and we'll go from there. Here to help!

DETAILS: Find more information on our website: www.capshauraki.co.nz or Ph 0508 2277 28 (CAPS CU); 07 868 8644 Thames; 07 862 6134 Paeroa.

- Supplied by CAPS Hauraki



PAEROA FARM SERVICES
 118 Normanby Road, Paeroa | 07 862 8263
paeroafarmservices.co.nz
 PaeroaFarmServices

Welcome to all the new families -
 come in and say Hello!

"Servicing Paeroa & surrounding regions since 1979"

HERE TO COVER ALL YOUR DAIRY NEEDS
 MILKING MACHINE & EQUIPMENT
 EFFLUENT & IRRIGATION
 WATER FILTRATION & PURIFICATION
 PUMP SUPPLIES & INSTALLATION

fee & mands
 1 Willoughby St, Paeroa | Mandy 0274 311 640 | Fiona 0274 380 330
shop@feemandmands.co.nz | www.feemandmands.co.nz

OPEN
 Tuesday - Friday
 10am - 4pm
 Saturday
 10am-1pm

**HOMWARE
 FURNITURE
 LIGHTING
 GIFTWARE**

**BABY WEAR
 MIRRORS
 WALL ART
 RUGS**

Need metal or aggregate?

WE SUPPLY
CRUSHER DUST
AND CLAY

WE'RE YOUR LOCAL
SUPPLIERS OF AGGREGATE
FOR RACES, TANKER TRACKS
AND ROADS ON THE FARM.

With local quarries
nearby we can offer
competitive pricing
and delivery.

Over 70 years
Serving the
Community



WWW.HGLEACH.CO.NZ

0800 10 87 27

Meet the LOCALS

ADVERTISING FEATURE



Welcome to the district from FVS

Every year, the Hauraki region reminds us that successful farming requires a switched-on operator.

With the unlikely combination of heavy marine clay and rich peat beneath wet winters and hot, dry summers, the region throws a bit of everything at us. From my time as a farm veterinarian in the Hauraki and Coromandel, I've learned that farmers here are resilient and innovative, always willing to try new things and put in the hours to get results.

At Franklin Vets, we admire your dedication to your land and animals. Our veterinary teams are equally passionate and dedicated, working with you to achieve the results you're chasing.

In short, you know how to farm, we know how to vet. At Franklin Vets, our engaged team is committed to creating value for our clients. We have a reputation for expertise in problem-solving and preventative veterinary medicine, building long-term, trusted relationships. Our team offers the highest level of veterinary expertise and service to farming clients throughout the Plains and Coromandel Peninsula.

Why choose Franklin Vets?

We deliver veterinary care and production gains in line with industry best practices. Our dedicated farm vets bring you recommendations backed by the latest research and farming principles. Our services include: full range of medical, surgical, and advisory services by a primary farm vet assigned to your business.

It also includes accredited mastitis, InCalf, Healthy Hoof advisors, and nutritional consultants, proactive herd/flock health planning with financial breakdowns, aata analysis tools (Infonet, WelFarm, DataLive) for smart on-farm decisions, quality products and medications at competitive prices, wearable technology solutions for herd health, production and performance and emergency after-hours vet service. In the Eastern region of Franklin Vets, encompassing Waitakaruru, Kōpū, Paeroa, and Waihi clinics, we have nine vets and six farm technicians delivering top-notch service.

If you want a veterinary team working hard for you, rain, hail, or shine, give us a call.

- Greg Lindsay, Farm Vet & Regional Manager, Franklin Vets

Empowering families with support

For 25 years the Hauraki Family Violence Intervention Network has made a difference in the Hauraki-Coromandel.

The organisation focuses on supporting and empowering families with a range of services and agencies from Waihi, through the Hauraki Plains and all the way up to Colville on the Coromandel Peninsula.

Its main commitments are to help and empower families with the tools and support for understanding what healthy relationships look like and where to get help if change is required, HFVIN Co-ordinator Sally Christie told *The Profile*.

"We bring together a diverse coalition of community organisations, businesses, individuals and government agencies, all united by our shared commitment to eliminate family violence.

"I see myself as a bridge builder because with family violence and making a difference, we know that professional agencies only hear about a fraction of it and police etc," she said.

It was people in the community, she said, such as aunties, neighbours, sports coaches and employers who could see the signs and showed concern for people affected by family violence.

"All of those people are key in having the knowledge and resources to... point out when someone's behaving badly and, as importantly, know where to go to for help.

"So part of our role is to resource and support the specialist agencies and to empower communities to have the resources, if they are concerned, to get help fast."

Some big changes in life such as shifting houses or employment and even the cost of living crisis are stresses that increase the risk of destructive behaviors, she said.

"We acknowledge the stresses [however] it's never an excuse for violence.

"If we're trying to make a difference for our



There is support for families across Hauraki.

Photo: SUPPLIED

children and our grandchildren, they will do what they see, not what we say. So all of us monitoring and modelling that difference is really important."

It was something, she said, that could affect everybody.

"It affects all aspects of our community because it's really easy for people to say, oh, it's those people that look different to me or live in a different part of town or something, but it doesn't discriminate."

For people in need of support, Sally said help was available.

"Social service agencies and your medical practice have this information and knowledge. Talk to a trusted friend.

"The key message is don't suffer this on your own," she said.

"Ask for help, whether that be informal in your community or through an agency."

DETAILS: If in immediate danger, please call 111, or Sally Christie on 027 372 6332 or Te Whāriki Manawāhine O Hauraki - Hauraki Women's Refuge on the 24/7 free number: 0800 868 3132

-By Davidda Hikatangata



FranklinVets

Commercial farm | Pets | Lifestyle farm



Hauraki Family Violence Intervention Network

WELCOME

Change can challenge family relationships

Support is available

For more information
Co-ordinator: Sally Christie
sally@hfvin.co.nz

027 372 6332



VIOLENCE FREE
COROMANDEL + HAURAKI

100% LOCAL VETS HERE TO HELP

KOPU 07 868 5007 | PAEROA 07 862 7295

WAIHI 07 863 8684 | WAIHI BEACH 07 863 7387

WAITAKARURU 07 868 9030

www.franklinvets.co.nz

Meet the LOCALS

ADVERTISING FEATURE



Smith & Sons Hauraki co-owner Michael Woulfe and his son, Walter. Photo: SUPPLIED

Smith & Sons has you covered

Michael and Haylee Woulfe are the owner-operators of Smith & Sons Hauraki.

If you are looking for a skilled tradesman who would love to see your project through from start to finish, then get in touch with Michael today.

We specialise in all aspects of home renovations from adding a storey to full kitchen and bathroom makeovers, plus decks, laundries, granny flats, and pools.

Our projects are tailored to your desires, ensuring every detail exceeds expectations.

We service the Hauraki district including the following areas: Thames, Ngatea, Paeroa, Tahuna, Coromandel, Kopu and Waihi. "We're happy to come out and quote any job - no matter how big or

small. I think people get nervous about tiny jobs thinking it might be a waste of time, or that a bigger job might take a long time to craft a quote - but we're very happy to do it."

With a vision to offer customers the best service throughout their project process, Smith & Sons Hauraki wants the community to know that even if you can't catch them in their 8am to 5pm operating hours - they will help make it work.

"Michael's happy to come and do a quote on a Saturday or when people are heading home after work."

DETAILS: To find out more or submit an enquiry, head to www.smithandsons.co.nz or Ph 0800 764 846.

- Supplied by Smith & Sons Hauraki

Livestock values - what do they mean for me?

By GRANT EDDY, CooperAitken Partner

Farmers livestock often form a large part of their assets and therefore deserve consideration by owners on how to manage for the future.

In May/June each year the IRD Herd Scheme values are released, and as advisors we are often asked: Are they out yet? What will they be? What will they mean for my tax bill?

A review of May balance date farmers' 28 June tax is important, particularly with higher profitability trends this season. However, at CooperAitken we also believe when making tax and livestock valuation decisions, an equally important question is "What does it look like in 5-10 years' time so we can plan accordingly?"

To help plan treatment of livestock in the financial statements, clients need to understand where we have come from with the rules, where we are currently, and what may happen in the future for individual clients and their specific needs.

Although the IRD herd values are not released when this article was published, farmers should understand and consider the following.

Where have we come from?

For many years farmers have been able to value livestock under methods such as Market Value, Self Assessed Cost, National Standard Cost (NSC) and National



Photo: SUPPLIED

Average Market Values (Herd).

In broad terms farmers mainly use two main options being the NSC and Herd.

Fundamentally there has been little change in the two main methods since implemented approximately 30 years ago.

The Herd option treats the livestock as a capital asset with tax assessed on any change in livestock numbers or categories, or when livestock is sold at a value different to the IRD's annually published Herd Scheme values. IRD survey livestock agents across the country and

CONTINUED ON P20

THINKING OF
RENOVATING?
WE MAKE IT EASY



Smith & Sons
RENOVATIONS & EXTENSIONS

0800 764 846

www.smithandsons.co.nz

Kia ora and welcome to the families who have recently come to live in Hauraki.

CAPS Hauraki, established in 1986 is here to support you and whānau to access the help you might need.

Services we provide include:

- Support for adults who have experienced sexual harm, recently or in the past.
- Parenting tips and tricks for raising the next generation.
- Helping youth build confidence, access employment, training or education.
- Navigating systems, finding solutions with Social Work support
- Regaining a sense of safety through child and adult safety programmes
- Counselling can help to heal the hurt when you're struggling.
- Don't know what you need or where to go - you can call us.



CAPS Hauraki P: 07- 868 8644
or FP: 0508 2277 2 8 (CAPS C U)
reception@capshauraki.co.nz
www.capshauraki.co.nz

THAMES KIA

Kia EV5 & EV3. Go electric with confidence.

3 Years Charging*
3 Years / 45,000km Servicing*
RUCs covered for 45,000km*
\$0 On Road Costs



*Terms and conditions apply.

3 Years Servicing on the Kia Seltos.*

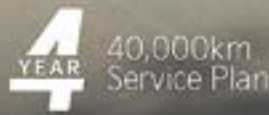
That's Kia Confidence.



*Terms and conditions apply.

4 Years Servicing on the Kia Sportage.*

That's Kia Confidence.



*Terms and conditions apply.

4 Years Servicing on the Kia Stonic.*

That's Kia Confidence.



*Terms and conditions apply.

THAMES KIA 321 Pollen Street, Thames

Ph 07 868 8951 • Paul Griffin 021 169 4036 • www.ThamesKia.co.nz




Williams
Effluent Solutions

Practical effluent solutions you can trust

- ✓ Manufacture
- ✓ Effluent System Design
- ✓ On farm Installation and Servicing
- ✓ Concrete Infrastructure

For over 40 years, we've been trusted by farmers across New Zealand and beyond to deliver simple, reliable, and cost-effective effluent solutions that make farm life easier.

0800 4 EFFLUENT | williamseffluent.co.nz



In stock & ready to go. Beat the madness!

Central Motors
Hauraki Ltd

60 Orchard Rd, Ngatea • 867 7524
www.centralsmotors.co.nz

Andrew - 027 285 0349 • John - 027 279 6799

On the Land

Livestock values - what do they mean for me?

CONTINUED FROM P18

base Herd Scheme values on market value sales in recent months.

The main alternative, NSC value, treats the stock as a trading asset with tax paid on any change in calculated values between years.

The NSC value is based on IRD assessment of the costs to breed, rear and grow the animal as well as factoring in costs of animals purchased.

Sale of the herd when on NSC has traditionally led to higher taxation at the time of sale compared to the Herd Scheme.

Although the base methodologies have not changed in the last 30 years, IRD updated rules approximately 13 years ago as anti-avoidance measures to manage transfers between livestock valuation schemes, stock transfers between related parties, generational livestock transfers and when taxpayers cease farming.

Rules in this area are complex and require advisors specialising in rural and livestock farming to manage pitfalls and opportunities for clients.

With farm succession topical for many farmers and forecasts signalling significant transfer of wealth in coming years, planning for these specialised rules is needed by a suitably qualified advisor.

Where we are currently

With the base livestock tax valuation methodology largely unchanged for the last 30 years, there are many tools and programs that can work out behind-the-scenes valuation calculations.

However, questions should be raised; Are they still relevant for the ever-evolving industry? For example: Do the rules reflect changes in the industry over the last 30 years, such as:

- o Shifts to Winter Milk supply and Autumn Born calves:
 - o Change in cost structures with herd homes, environmental costs, and animal welfare considerations
 - o Hybrid situations where clients are both trading in livestock and maintaining base capital herds
 - o Use of technology such as wearables and robotics
 - o Higher input farming systems
- These factors, among others, change

the cost structure and nature of the farm. Are these reflected in 30-year-old methodologies?

Also considered is whether the nature of a farmer's business has evolved, with larger and more complex operations, leading to more complex structures.

Do the rules cover multi-owner, multi-property and multi-generational operating structures easily and fairly?

If the user or advisor does not understand the logic when using automated livestock valuation tools to produce a single value at a point

in time, they cannot guide farming clients on how that value should be applied, particularly for more unique situations or when planning ahead.

Planning for the future

At CooperAitken we view planning for the future as important. Therefore, we challenge our clients when

livestock values are released or discussed, that they not only consider what this means for taxes today and the next 12 months, but also consider:

- o Do we understand what this means for the future, and is it aligned with my business and personal plans?
- o Will the livestock be transferred to family, and how am I placed tax wise for this transfer?
- o Farming businesses go in cycles. Is there opportunity to change livestock valuations if the business cycle allows?
- o What happens if the rules are updated to reflect modern farming practices. Are we well placed?
- o If there is a change in the political environment will that affect my decision, for example if a capital gains tax was introduced?
- o Will the savings on decisions today be more expensive in the future?

Overall, livestock are a significant asset of farmers, and the financial and tax aspects need to be managed by the farmer and a suitably qualified rural professional asking the right questions.

DETAILS: You can check our website www.cooperaitken.co.nz for further details on statistical analyses of farm profitability and historical trends on Herd Scheme values compared to payout or contact any of the team for assistance with these matters.

- By Grant Eddy, MMS FCA CPP
CooperAitken Partner

“Overall, livestock are a significant asset of farmers, and the financial and tax aspects need to be managed by the farmer and a suitably qualified rural professional asking the right questions.”

FOR EARTHWORKS

- ▶ Digger, Bulldozer, Truck Hire
- ▶ Mulching, Gorse, Ti Tree etc
- ▶ Metal
- ▶ Suppliers of Hay Silage & Maize Silage



FOR CARTING OF

- ▶ Suppliers of Mangatangi River Rock
- ▶ Decorative Stones & Drainage
- ▶ Sand Shell
- ▶ Palm Kernel
- ▶ Fertiliser
- ▶ All Grades of Metal

T & A MCWATTERS LTD

PHONE TIM 027 278 5384

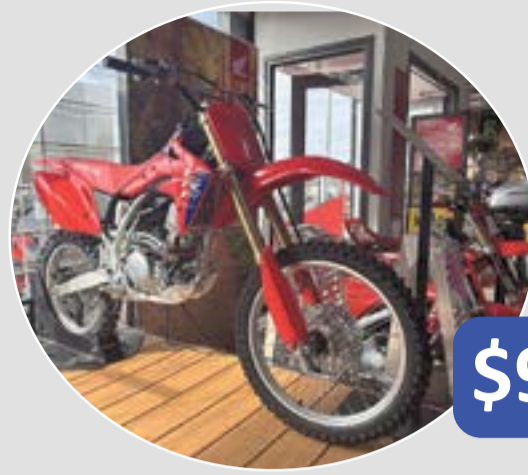
SMYTHES HAULAGE LTD

PHONE TIM 027 278 5384

**2024 INVACARE
Mobility Scooter
C/w Full Cab Kit
NEAR NEW**



\$7,995 Inc GST



**NEW
2026
Honda
CRF 150R
2 Wheeler**

\$9,995 Inc GST

**2023 Honda
SXS 520
1 Owner, Roof,
Good Tidy
Condition**



\$12,995 Inc GST



**2024 HONDA
TRX520 FA6
4x4, Auto, P/S,
1 owner,
Only 9800km,
Dry stock farm,
Bullbar & Flaps,
Very tidy condition**

\$16,995 Inc GST



Hauraki Plains Motors

1 Pipiroa Road, Ngatea • Ph 07 867-7021

A/Hrs Mike 027 440 4681, Miles 027-227-1121 Email: admin@hpmotors.co.nz

Trees in power lines cause up to 1 in 5 power cuts on our network each year.



Overgrown trees and falling branches can damage power lines, cause outages, and make it harder for us to restore power. They can also pose a significant fire risk. That's why it's important to plant trees and shrubs well away from power lines and to regularly maintain any vegetation on your property.

At Powerco, we keep an eye on trees growing near our power lines. If your tree is within the growth limit zone, we'll issue you a 'cut or trim' notice advising that work is required to keep it clear of the lines. Working near power lines is extremely dangerous, and can result in serious injury or electrocution. Tree trimming near power lines must be carried out by a Powerco-approved contractor.

Once the work is complete, please let us know. If the work is not completed by an approved contractor, or you do not notify us it has been completed, penalties may apply, including fines up to \$10,000 and an additional \$500 for every day the work remains outstanding.

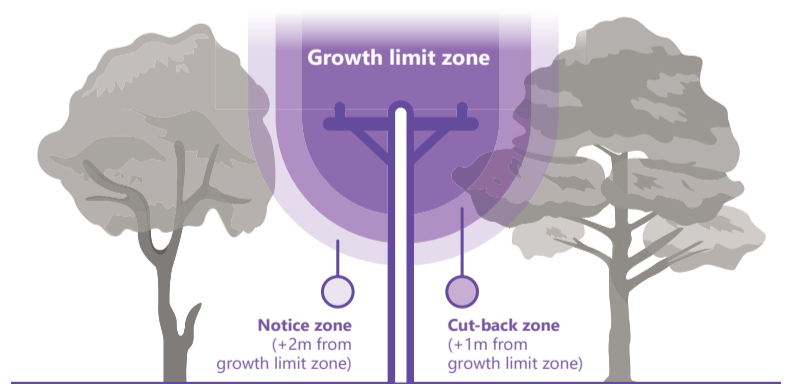
Help us keep the power on - plant smart, trim responsibly, and always stay safe around power lines.



For more information and to find an approved contractor, visit: www.powerco.co.nz/tree-safety



Clear to the sky Growth limit zone Notice zone (+2m from growth limit zone)



Tree A
If your tree is growing within the **Cut-Back or Notice Zone (Tree A)**, you may receive a notice advising that trimming will soon be required because the tree is getting too close to power lines.

Tree B
If your tree reaches the **Growth Notice Zone (Tree B)**, you will receive a notice requiring it to be trimmed. For more information and to find an approved contractor visit our website.

Overhead line voltage	Growth limit zone	Cut-back zone	Notice zone
Power lines (230-400 V)	0.5m	1.5m	2.5m
High voltage lines (6.6kV)	1.6m	2.6m	3.6m
High voltage lines (11kV)	1.6m	2.6m	3.6m
High voltage lines (33kV)*	2.5m	3.5m	4.5m
High voltage lines (50-66 kV)*	3.0m	4.0m	5.0m
High voltage lines (66kV or more)*	4.0m	5.0m	6.0m

For spans greater than 150 metres, additional clearances apply. *Clear to the sky requirement. Trees protected by district plans are excluded from the clear to the sky requirement.



TWENTYMANS
FUNERAL DIRECTORS
Since 1867

*Honour your loved one's legacy
in the best possible way*

07 868 6003
funerals@twentymans.co.nz
www.twentymans.co.nz

SUDOKU

253

Fill the grid so every row, every column and every 3x3 box contains the numbers 1-9

4			1					8
1				9				3
	6	9		3				4
	4	6	9	8	3	5		
8								7
		3	5	7	1	6	4	
3				2		4	6	
	7			4				1
	2				9			3

EASY

								8
		7	4			1	3	
9					6	4		
4		8	6	1		7		
	3						6	
		6		9	8	2		1
		5	2					9
	1	2			3	6		
7								

MEDIUM

		8		7	4			
	1	2		8		3	9	
6					9			
	6	9						
	7		3		2		4	
						7	5	
			8					1
	2	6		9		4	7	
			4	1		6		

HARD

253

Puzzles © The Puzzle Company
www.thepuzzlecompany.co.nz

3	9	8	1	7	4	5	6	2
7	1	2	6	8	5	3	9	4
6	5	4	2	3	9	8	1	7
4	6	9	7	5	1	2	8	3
8	7	5	3	6	2	1	4	9
2	3	1	9	4	8	7	5	6
5	4	7	8	2	6	9	3	1
1	2	6	5	9	3	4	7	8
9	8	3	4	1	7	6	2	5

HARD

3	6	4	1	2	7	9	5	8
2	5	7	4	8	9	1	3	6
9	8	1	5	3	6	4	2	7
4	2	8	6	1	5	7	9	3
1	3	9	7	4	2	8	6	5
5	7	6	3	9	8	2	4	1
6	4	5	2	7	1	3	8	9
8	1	2	9	5	3	6	7	4
7	9	3	8	6	4	5	1	2

MEDIUM

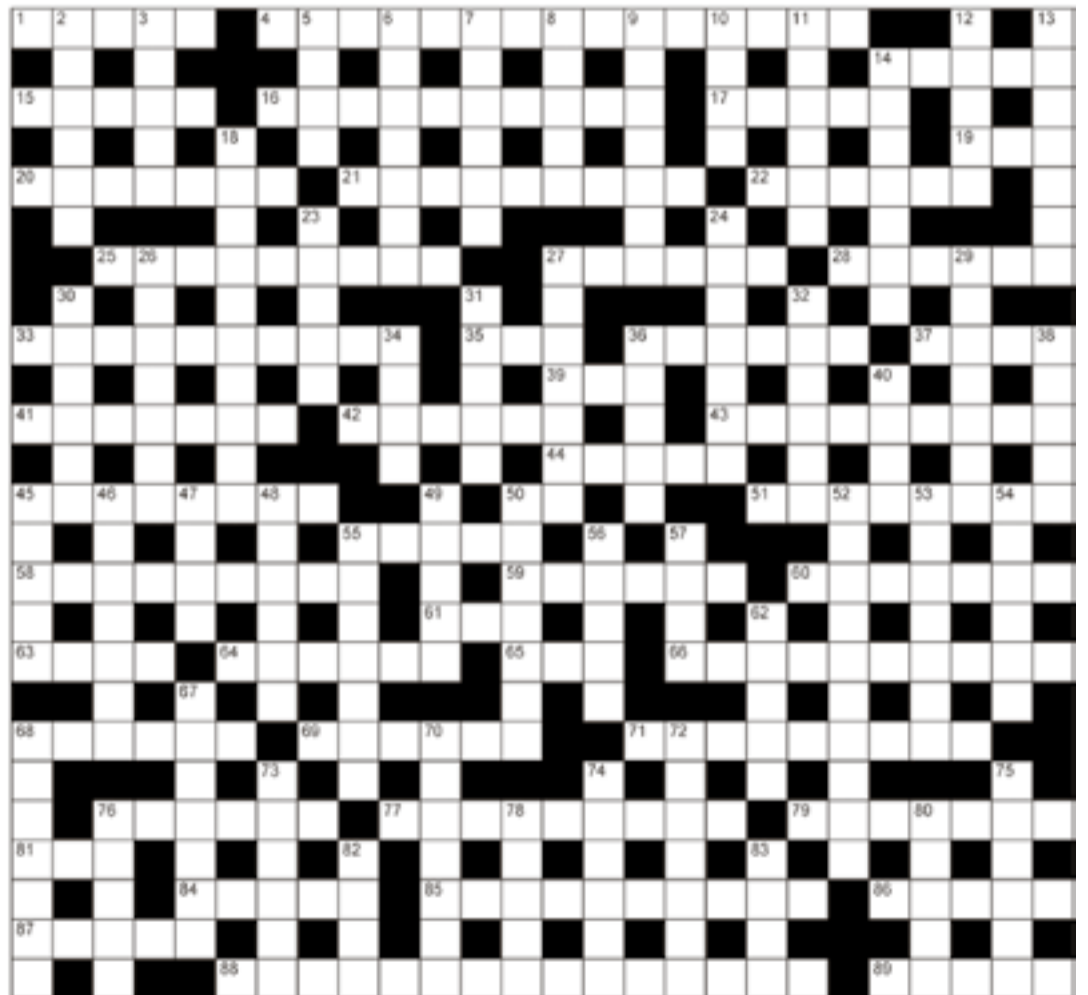
4	3	2	1	5	7	9	8	6
1	8	7	6	9	4	2	3	5
5	6	9	2	3	8	1	7	4
7	4	6	9	8	3	5	1	2
8	5	1	4	6	2	3	9	7
2	9	3	5	7	1	6	4	8
3	1	8	7	2	5	4	6	9
9	7	5	3	4	6	8	2	1
6	2	4	8	1	9	7	5	3

EASY

JUMBO CROSSWORD

273

- ACROSS**
- 1 Backbone (5)
 - 4 Almost weightless (5,2,1,7)
 - 14 Provide food (5)
 - 15 Figure out (5)
 - 16 Laboratory instrument (10)
 - 17 Anaesthetic (5)
 - 19 Groove (3)
 - 20 Rogue (7)
 - 21 Engagement (9)
 - 22 Get back (6)
 - 25 Double meaning (9)
 - 27 Alleviation (6)
 - 28 Purchased (6)
 - 33 Beach construction (10)
 - 35 Rascal (3)
 - 36 Rider (6)
 - 37 Molten rock from volcano (4)
 - 39 Signal (3)
 - 41 Lap (7)
 - 42 Red fruit (6)
 - 43 Motherhood (9)
 - 44 Wash soap out (5)
 - 45 Boss (8)
 - 50 Identification (1,1)
 - 51 Uneasy (8)
 - 55 Washbowl (5)
 - 58 Extravaganza (9)
 - 59 Wheats (anag)(6)
 - 60 Two-note birds (7)
 - 61 Australian bird (3)
 - 63 Biblical garden (4)
 - 64 Deeply religious (6)
 - 65 Falsehood (3)
 - 66 Predecessor (10)
 - 68 Miniature whirlpools (6)
 - 69 Fame (6)
 - 71 Road speed (anag) (9)
 - 76 Scribe (6)
 - 77 Rigidity (9)
 - 79 View (7)
 - 81 Lavatory (3)
 - 84 Snow house (5)
 - 85 Later (10)
 - 86 Circular flight (5)
 - 87 Characteristic (5)
 - 88 Make things run smoothly (6,3,6)
 - 89 Dromedary (5)
 - DOWN**
 - 2 Financial gain (6)
 - 3 Abdominal depression (5)
 - 5 Bird revered in ancient Egypt (4)
 - 6 Reap (7)
 - 7 Soak up (6)
 - 8 Up in the air (5)
 - 9 Seeing-orb (7)
 - 10 Excessively sentimental (4)
 - 11 Reverberated (6)
 - 12 Ship's rear (5)
 - 13 Defend (7)
 - 14 Inventor (7)
 - 18 Resemblance (10)
 - 23 Stale-smelling (5)
 - 24 Greet (7)
 - 26 Check-up by physician (7)
 - 27 Parachute pull (7)
 - 29 Rock (7)
 - 30 Ethnic intolerance (6)
 - 31 Indian instrument (5)
 - 32 Stinging plant (6)
 - 34 Greek love god (4)
 - 36 Denim trousers (5)
 - 38 Bottomless pit (5)
 - 40 Worry (4)
 - 45 Come after (5)
 - 46 Act (7)
 - 47 Cereal crop (4)
 - 48 Go beyond (6)
 - 49 Small island (5)
 - 50 Pancreas product (7)
 - 52 Pickled cabbage (10)
 - 53 Compared (7)
 - 54 Ablution device (6)
 - 55 Cherished (7)
 - 56 Recorded (5)
 - 57 Cook (4)
 - 62 Stage accessories (5)
 - 67 Shortfall (7)
 - 68 Do like (7)
 - 70 Atrocity (7)
 - 72 Subjugate (7)
 - 73 Low room (6)
 - 74 Boy's name (6)
 - 75 Submissive (6)
 - 76 Adult female (5)
 - 78 Go get (5)
 - 80 Grub (5)
 - 82 Exploding star (4)
 - 83 Worshipped image (4)



PREVIOUS SOLUTION

ACROSS: 1 Baker, 4 Law of the jungle, 11 Sight, 14 Strop, 15 Boysenberry, 16 Offshore, 19 Creeper, 20 Cruel, 21 Concerned, 24 Publisher, 26 Avenue, 27 Stoops, 31 Alike, 32 Gangster, 34 Nationwide, 38 Widower, 39 Reaped, 40 Sneaky, 41 Dive, 42 Tornado, 45 Unfriendly, 50 Traders, 54 Loud, 55 Singer, 56 Pitted, 57 Sustain, 60 Phenomenal, 61 Swimsuit, 62 Coped, 65 Intent, 66 Reduce, 67 Fluctuate, 72 Tenuously, 73 Seine, 74 Succeed, 79 Smoulder, 80 Humiliation, 81 Reply, 82 Refer, 83 Blow hot and cold, 84 Spade.

DOWN: 2 Alters, 3 Elope, 5 Ahoy, 6 Observe, 7 Tender, 8 Épée, 9 Uprooted, 10 Effort, 11 Suspecting, 12 Grow, 13 Trellis, 17 Cello, 18 Accurately, 22 Assay, 23 Positive, 25 Unknown, 26 Abridge, 28 Albino, 29 Stupor, 30 Ticket, 33 Green, 35 Evens, 36 Bend, 37 Used, 42 Tulip, 43 Roulette, 44 Olives, 45 Ungrateful, 46 Fire, 47 Impasse, 48 Nitwit, 49 Leers, 51 Rout, 52 Detroit, 53 Raised, 58 Counsellor, 59 Witch, 63 Furlough, 64 Queue, 65 Incisor, 68 Lunatic, 69 Superb, 70 Region, 71 Sealed, 75 Cheap, 76 Golf, 77 Lift, 78 Foul.

Marking the moments that matter

In Brief

OPINION

By MICHAEL WILKES



My boy just turned nine. And we've got this little family tradition when birthdays roll around. The night before, I sit them down and say goodbye to the child they've been.

This year, it was "Goodbye, eight-year-old Zander." I get a bit emotional, and they usually roll their eyes and tell me to stop being silly. But they love it.

And now, if I forget, they remind me.

We take a moment to remember what that year brought. Who they were. What they gave to the family. Eight-year-old Zander built a hut. Eight-year-old Zander reminded me that I need to keep fit or else he is going to out run me soon. We say a forever goodbye - because we're never seeing that version of them again.

Then the next day, we make a big deal about welcoming the "new" version into the family. "Welcome, nine-year-old Zander!" We cheer, get all dramatic about it, and introduce him as a new member of the whānau. It's become a funny lit-

tle milestone marker - but also something deeply meaningful.

When we first started this, our youngest got upset and cried because he thought we were actually losing his brother. But over time, it's become something they all look forward to.

A moment that helps us pause. Laugh. Reflect. And remember they're growing up fast - and I need to be present for it.

Traditions like this might seem a bit quirky, but they do something powerful. They help us notice. And when life moves at the pace it does, we need those intentional pauses. Not just to celebrate the birthday, but to cel-

ebrate the growth. The change. The kid they've been... and the one they're becoming.

So here's a question for you - what are your family traditions? What silly, heartfelt, or meaningful rituals are you building that shape your family's culture?

Because these small traditions? They leave a big mark. Not just for our kids - but for us too.

Michael Wilkes is a youth worker with Thrive Trust, supporting mentoring and resilience programmes across Thames and Paeroa. To support his local youth work or follow stories and insights, find him on social media @michaelwilkes.kiwi. Enjoy these articles? Grab his book The Unschooled Life at michael-wilkes.kiwi.

LIBRARY OPENING POSTPONED

The Whangamatā Library's reopening has been postponed until June 4 due to volunteers needing more time. The library's temporary new venue will be on the corner of Port and Hunt Rds, and will see more than 6000 books become available to the public again, after the old library site was closed due to mould and leaking issues.

STORMWATER COMPLICATIONS

The stormwater upgrade works on Heatherington Rd, Whangamatā, have hit an unexpected snag with the discovery of unmarked underground utility services at the Rutherford Rd intersection. The services, discovered on May 11, will need relocating due to their depth before the stormwater upgrade can proceed. Contractors will be skipping this section in the meantime and continuing the upgrade further towards Port Rd, returning to the intersection once the services have been relocated. The intersection will remain unsealed until the works are completed, but will be open as a single lane to traffic.

COVE COSTS PROPOSED

The Department of Conservation (DOC) is considering introducing an international visitor access fee at Mautohe Cathedral Cove. Legislation enabling access charging has been introduced to Parliament. An open community meeting is scheduled for June 10, 4pm at the Hahei Community Hall to allow DOC to consult with the public over potential regulations, including how to implement the levy, potential discounts, exemptions and waivers, and where the resulting revenue should be allocated.

Pet Profile

A loyal boy with so much to give

Falcon is the kind of dog who quietly steals your heart.

With his beautiful light brindle coat and gentle nature, he is growing into a loving, loyal companion who simply wants to be close to his people.

He has so much unconditional love to give and will happily be by your side through all of life's little moments.

As Falcon settles and gains confidence, his playful personality shines more each day.

He loves interaction, enjoys toys, and is always eager to be included.

Watching him blossom has been incredibly rewarding, and it's clear he will make someone a truly devoted best

friend.

Falcon is still young and at a wonderful age for continued training and socialisation.

Falcon is up to date with his vaccinations, flea and worm treatments, and is waiting on his desexing, which will be completed through Thames SPCA before adoption.

Come see us at Thames SPCA or call for a chat on 07 8686830.

DETAILS: Visit www.spcanewzealand.org.nz/adopt/animal/665896/puppy-falcon-thames to find out more.

Falcon has so much unconditional love to give.

Photo: SUPPLIED



A Lifestyle Village In Thames on the Coromandel

2 BEDROOM VILLAS NOW AVAILABLE

All villas and apartments are within walking distance to Thames' shops, cafes and walkways.

The perfect location to enjoy your fun-filled retirement.



Richmond Villas

LIFESTYLE VILLAGE

Living the lifestyle, loving the choice...



Our spacious villas provide you with plenty of warmth and light and garden patios to enjoy. There are a variety of layouts including 2 bedroom villas, and 2 bedrooms with a double garage. All residents enjoy the use of the Village Community Lodge and participation in all activities and amenities at your leisure.

ALL ENQUIRIES WELCOME, VIEW OUR VILLA OPTIONS TODAY!

82 Richmond St, Thames

0800 868 5484

www.richmondvillas.co.nz

PHONE US to view by Appointment!
Come and experience the difference!

CALL THE EXPERTS

AIR CONDITIONING



comfOrtgroup
Made 2 Cool

Air Conditioning / Heat Pumps
Installations & Servicing
Domestic, Commercial & New Builds

Call Now: Ph: 078688825
www.comfortgroup.co.nz

ARBORIST



TREE SHAPES
Qualified Arborists

- Treework Large & Small
- Stump Grinding • Hedge Trimming
- Fruit Tree Pruning • Chipping

For a free quote call
07 868 3985 or 0274 726627

Tyres, batteries, and top-notch friendly service

As the temperature starts to cool right down, it's time to vroom in and see Craig and Tania at Hauraki Tyre and Battery on Pollen St, Thames.

With 35 years of experience up his sleeve, Craig is the person to see when it comes to all things tyres, batteries and advice for any budget.

His regular customers trust him and the team to get the job done, and that's why they keep going back.

Free tyre tread, air pressure and battery checks are some of the services on offer by the team.

Whether it's mileage, comfort or performance – the tyre and battery experts can walk you through the massive range in their workshop.

You can also book in for a wheel alignment or tyre rotation, which can extend a tyre's life.

Their Exide range of batteries also come with extended warranties.

Winz quotes are available alongside the awesome afterpay option, they said – "so pop in for your quote".

The team is also proud to support the 'Premmie Knitting Club' as a drop off spot for peggy squares, newborn knitwear and blankets.



Hauraki Tyre and Battery owners Tania and Craig are ready to help familiar and new customers with their tyre and battery needs. Just pop in and see the team at 314 Pollen St, Thames.

Call in to see Craig and the team at 'The Big Yellow Tyre & Battery shop' at 314 Pollen St, Thames. Open from 7am to 5pm, Monday to Friday, and Saturdays from 9am to 12pm. Give us a call today 07 868 8182 or email us at haurakityres@xtra.co.nz.

- By Davidda Hikatangata

ARBORIST

Qualified and insured arborists.
20+ years experience

- Large tree removal specialists
- Pruning and hedge trimming
- Height / weight reductions
- Land clearing and reclamation
- Stump grinding - Scrub mulching
- Advice and consultancy

Get in touch with us today for a free quote.
info@haurakitrees.co.nz
0800 HTS tree (0800 487 8733)

ARBORIST

We solve your tree problems

- Tree Removal • Stump Grinding • Pruning
- Land clearing and hedge trimming
- Storm Clean Up

Qualified, experienced,
fully insured

Trusted treework for over 25 years

Call today

SHORT BACK'N'SIDES LTD

027 439 0367

shortbacknsides.co.nz

AUTOMOTIVE



- Repair • Service
 - WOF • Diagnostic
- Professional Friendly Service

Call us on 07 868 6799
or visit

www.wenzlickautomotive.co.nz
306 Mary Street Thames

BUILDER



- New home builds
- Renovations and extensions
- Decks, fences, and outdoor areas
- Any building work, big or small



Shaun 021 389 198 | admin@cairdconstruction.com

BUILDER



Nothing too big or small.
Honest & Professional Workmanship

Call us today
021 393 467
framedup.co.nz

- New Builds
- Renovations
- Kitchens
- Landscaping

CLEANING



- Lawn mowing
- Weedeating
- Hedge & tree trim
- Section clearing
- Gardening
- Rubbish removal
- Interior house clean
- New build clean/clear
- Odd jobs considered
- One off jobs welcome

0800 464 898
Alaine Hedges
027 242 7268
John Hedges
027 457 2018
Email: info@ajcleanupcrew.co.nz

EARTHWORKS



TAKING CARE OF ALL YOUR EARTHWORK NIGHTMEARES

- General Earthworks & Digging
- Housepads • Farmlane Raceway
- Tree Removal • Demolitions
- Driveways & Retaining Walls plus much more...

Ph: 027 269 7144 or 07 863 8208
E: mearesearthworks@gmail.com
www.mearesearthworks.co.nz

EARTHWORKS & CARTAGE



Digger, Bulldozer & Truck Hire

- Mulching
- Cartage of Metal, sand, fertiliser, palm kernel, hay & maize silage

PHONE TIM 027 278 5384
T & A MCWATTERS LTD

ELECTRICIAN



For All Your Electrical Needs

"Totally Dependable"

- New Builds
- Alterations
- Quotes
- Lighting Plans
- Heat Pumps
- Service and Maintenance
- Commercial
- Fire Systems

Ph: 07 863 7746 Email: waiha.laserelectrical.co.nz

HOME IMPROVEMENT



When your grass gets tall we handle it all

- Lawn Mowing • Edging & Trimming
- Green Waste & Rubbish Removal
- One-off & Regular Services
- No job too big or small – just give us a call!
- Servicing Your Area
- Same-day or next-day service available
- Affordable rates – free quotes!

027 285 4981 / cutaahi@outlook.co.nz

FLOORING



Owens Flooring

We Have All Your Flooring Needs Covered
Flooring Sales & Installation
Domestic & Commercial

- Carpets • Vinyls
- Laminate & Timber Flooring

Showroom: 5/57 Wilson Road at Waihi Beach
07 863 5723 / 027 233 7277
sales@owensflooring.co.nz
www.owensflooring.co.nz

GLASS & GLAZING



Baker Glass & Glazing Ltd
"Craftsmanship with care"

- Glass Repairs
- Shower Glass
- Splashbacks
- Balustrades
- Retro-fit Double Glazing
- Insurance Quotes

Contact 021 514 487 | glass@bakerjoinery.co.nz

HOMECILL



Hunts Home Kills

For all your meat and game processing needs.

- We are dedicated to you, the customer.
- Hygienic, vacuum packed products.
- Professional facilities.
- Smoked meats are our speciality.
- 12 - 14 days hung on the bone, minimum
- Game orders over 10kg
- Premium custom orders to meet your needs

Ph: 0800 250 939 • Mob: Mike - 021 411 210
E: huntshomekill@gmail.com
W: huntshomekills.nz • Follow us on FB

HOUSE MOVERS



Your local housemover and foundation SPECIALIST
Relocatable house packages for sale at
5 & 40 Kohunui St, Ngatea

For all your needs on the Hauraki Plains and beyond
• LBP qualified • Houses bought & sold • House moving
• On-site moves • Jacking & rolling • Structural moving
• Re-piling • Re-levelling • Pile driving • Push piles

phm.co.nz • sales@phm.co.nz
Andy 021 125 1668 • Ian 027 442 6001

FUNERALS



Valley FUNERAL SERVICES
FUNERAL DIRECTORS

Locally owned & operated

- Direct Cremation \$3175 gst incl for Ngatea, Paeroa, Te Aroha, Thames & Waihi
- Direct Cremation \$3500 gst incl for Coromandel, Tairua, Whangamata & Whitianga.
- Traditional, Bespoke & Eco Funerals from \$5800

Phone: 0800 862 6362

Des & Christine Necklen
Funeral Directors

HOUSEWASH



Soft-wash the exterior of your house, roof, patios, paths and driveway. For best Algae, Moss & Lichen treatment. We also clean exterior of windows, gutters and do general waterblasting

Prompt local service with over 20 yrs experience
Call for free quote
Andy Direct: 027 313 4386
or 0800 737 777
or email: housewash@xtra.co.nz

JOINERY



Baker Joinery Ltd
"Craftsmanship with care"

Kitchens – Wardrobe Solutions – Laundry
Bathrooms – Custom made furniture

For top-notch craftsmanship & expertise in kitchen & cabinetry
Contact 07 863 8962 / info@bakerjoinery.co.nz
or pop into our Show Room 46 Johnston Street Waihi

SHOWROOM OPEN SATURDAYS 9am to 1pm

KITCHENS



Scullery, Wardrobe, Laundry units etc
Quality Product - Competitively priced
No obligation FREE measure & quote

PENINSULA JOINERY LTD
THAMES P: 07 868 6323
E: office@peninsulajoinery.co.nz

We cover Thames, the Coromandel Peninsula & Waikato wide

SPORTS

Email your sports news, reports and photos to editor@valleyprofile.co.nz

Skatepark revival rolls ahead after revamp

SKATEBOARDING

By KELLEY TANTAU

Renovations at Paeroa's Norwood Rd skatepark are now complete, marking a major milestone for the local skateboarding community after a year of getting stuck in.

In June last year, Janik Levien and the crew behind Hauraki Skate set out to secure a professional concrete grind for the park they grew up skating on.

The benefits of the grind would be "massive", Janik said at the time, from safety and usability, to presentation and preservation, but it would cost around \$10,000.

Now, after more than \$6000 was raised through donations from the local and wider skateboarding community, the concrete renovation was able to begin on May 27.

It was completed by May 29, with the upgraded surface reopening once the sealant cured on Friday evening.

"We are so happy to finally have the concrete renovation done," Janik said, "and we look forward to adding some murals, shade, and a water fountain to the area before summer."

Janik, who last year launched free weekly skate sessions aimed at getting more tamariki and rangatahi involved in the sport, said Hauraki Skate was also looking to create a non-profit organisation or club in order to start applying for funding to further upgrade the facilities and ramps at the park.

Already, the group has added a range of new ramps and street-style obstacles to the park, including mini ramps, grind boxes, kickers and benches, while also



Hauraki Skate's Janik Levien with the skate school at the Norwood Rd skatepark. SUPPLIED
planting three titoki trees alongside the skatepark to provide future shade.

Hauraki Skate has also launched its new winter skate school schedule, with sessions now running every Sunday from 3pm at the Norwood Rd skatepark.

A gold coin donation is encouraged for each skater attending, while one free skate school session will also be held on a selected Wednesday each month, depending on weather and coach availability.

"A massive thanks to everyone who donated or has supported the mission the past 12 months - good things take time!" Janik said. "We appreciate the community's support and can't wait to see what the future holds for Hauraki Skate and the local skate community."

Valley Liquid Waste
Division of CST Group

CONTACT US
07 280 0522
hello@valleyliquidwaste.co.nz
www.valleyliquidwaste.co.nz

YOUR LOCAL SEPTIC TANK CLEANING EXPERTS

CST GROUP

CALL THE EXPERTS

PAINTER

That Painter Ltd.
Residential & Light Commercial
We paint like Picasso only cheaper!

- Interior & Exterior • Residential & Light Commercial
- Fully Insured • Workmanship Guarantee

Contact Stan on 0223137911 to discuss your project.

PLASTERER

TWINWOLF PLASTERING SERVICES

- Exterior Plastering specialist.
- 30 years experience
- All aspects of plastering including. Gib stopping, fireplaces, steps, foundations, patios, block walls and renovations.
- Specialising in exterior repairs & modern finishes.

Shannon: 022 428 2239
Twinwolfservices@gmail.com

PROPERTY SERVICES

OLD MATES
PROPERTY SERVICES

- Rubbish & green waste removal
- Lawns, hedges and property tidy ups
- Deceased estate clearing
- Gutters, windows and water blasting
- Furniture moving and more

CALL OR TEXT: 027 212 2402
www.oldmates.co.nz

RUBBISH REMOVAL

Smart Bins

Skip bins, Wheelie Bins, Farm Bins

Phone us or book online
0800 4 MY BIN or
www.smartbins.co.nz

SCRAP METAL

Scrappy Vorns

Buyers of all scrap metal & cars
Farm clean up specialists
Top prices paid

Phone Vern • 021 621 437

SCRAP VEHICLES

CARS WANTED CASH PAID

Any unwanted car, ute, van or 4WD No warrant, No WOF, Deregistered, not going?? NO PROBLEM

WAIKATO VEHICLE REMOVALS PH/TXT KEVIN 027 299 6165

SEPTIC TANK CLEANING

ALLENS UNITED
Paeroa (2015) Ltd

LIQUID WASTE SPECIALISTS

0800 862 720 | 027 442 0067

TOWING

THAMES TOWING & WORKSHOP

24HR Breakdown • AA Towing • WOF
Full mechanical workshop
MTA & AA Approved

Ph: 07 868 7685 - 24/7
thamestowing@gmail.com
29 Queen Street, Kopu

TYRES & BATTERIES

HAURAKI TYRE and BATTERY

- Stockists of all major tyre brands
- Exide Batteries with extended warranties
- Wheel Alignments.

314 Pollen St, Thames
Ph 868 8182

WASTE REMOVAL

SKIP BIN HIRE

For Household, Business, Building and Farm
Rubbish Disposal

Ph: 0800 754 724
Paeroa Skip Bins (2017) Ltd

WINDSCREENS

Katikat Glass
WINDSCREENS

- Windscreen Replacements
- Stone Chip Repairs

Ph: 07 549 3399
110 Main Road, Katikati
(Behind the Caltex Service Station)
www.katikatiglassandwindcreens.co.nz

WINDSCREENS

PRECISION WINDSCREENS
We come to you!

Chip Repairs - Windscreen replacements
-Insurance claims

PH: 0272127750
www.precisionwindcreens.co.nz

It's 'never too late' to chase a dream

By ALICE PARMINTER

For Ashni Marsh, age is just a number. The Ngatea woman graduated from the Manukau Institute of Technology (MIT) on May 21 with a Bachelor of Applied Social Work, a year shy of her 50th birthday.

And having thoroughly impressed her lecturers, she was also chosen to give the valedictory speech. Returning to study as a mature learner is a daunting enough task on its own - but with her son only three years old, her partner dealing with health issues, an elderly relative to care for, and working part-time in their business, Ashni was facing a more difficult journey than most. "Returning to study in my late 40s was just overwhelming for me and at first I didn't want to do it," Ashni told *The Profile*.

"The questions I asked myself - was I too old, if I was capable, and how was I going to juggle with balancing study, family life, business responsibilities?"

"Despite all that I still had this vision for me that I wanted to do more with my life."

Having taken the plunge, Ashni made sure she showed up, making the long weekly commute to the South Auckland campus,



Ashni Marsh's valedictory speech was a celebration of resilience, determination, and never giving up.
Photo: SUPPLIED

and completing all her assignments and placements. Ashni reflected on the years of hard yards in her valedictory speech.

"It was such a proud and emotional moment for all of us... not just a celebration of qualification, but also a celebration of

resilience, sacrifice, late-night tears, and determination," she said. "I realized that life is short and sometimes we have to take chances on ourselves. Even when we are scared." Ashni is now a registered social worker. Her work at CAPs Hauraki gives

her life purpose, she said, and having seen what she can do she now has her sights set on further studies.

"My five-year plan is to either get my Master's degree, or go into a supervisory role," she said. "I love advocacy, to know that people have a voice. It's something that I'm really, truly passionate about."

And whatever she does next, Ashni knows she has help.

"None of this would have been possible without the support and encouragement I received throughout my studies," she said.

"My husband has been my greatest support in [his] constant encouragement. And MIT became a very safe space for me... if you feel supported and accepted and respected, you thrive."

Ashni hoped her own journey would help inspire others who are thinking of returning to study in their later years, as well as being an inspiration to her son. "To people that are thinking of studying at a later age of their life... Age is just a number. It doesn't define your ability to succeed," she said.

"It's never too late to follow your dreams."

CLASSIFIEDS Deadline Monday Noon

Death Notice	Handyman	Land Wanted	Public Notice	Public Notices
<p>DOLLARD, Stephen John: On 24th May 2026, with loving family at his side; aged 71 years. Loved husband of Sharon. Much loved Dad of Nic and Harry, Dave and Becs, Brennan and Jolynn, and Cailee. Loved Grandad Bumpa of Macaulay, Lacey, and Jed. A gathering to celebrate Steve's life will be held at The Thames Bowling Club, 512 Mackay Street, Thames on Wednesday 3rd June from 2pm.</p> <p>TWENTYMANS</p>	<p>An experienced handyman covering all trades with over 20 years exp building trade. Please contact Laurie King 021 251 0246 ktpropertyservice.com</p> <p>Handyman Services</p> <p>THAMES HANDYMAN & BUILDING SERVICES Building, home maintenance & general gardening services Phone: Fleur or Crighton • 0273 913 283</p>	<p>Wanted to Lease/Rent land while I look for another farm to buy anything considered Please call or text Richard 0279332015</p>	<p>ATTENTION TE PURU The Thames Coast Community Church has shifted its venue from 453 Thames Coast Rd to the Te Puru Community Hall, 4 West Close. The services will commence on Sunday 7th June at 10am. All are welcome. We would like to see you there. For more information ring 07 868 2300</p>	<p>Thames Community Cancer Support Group AGM 17th June 2026 @ 11.30 am Croquet Rooms Beach Road, Thames</p> <p>Paeroa CPNZ Community Patrol (previously Night Owls) AGM June 10, 7.30pm at the meeting room 6 Rotokohu Rd (next to Paeroa WINZ)</p> <p>CLASSIFIEDS Call Nikki: Ph 022 130 3885</p>
<p>In Memoriam</p> <p>GARRETT, Rodney George Edward: Passed away 4 years ago 6th June 2022. Aged 60 years young. Loved husband, father, son, brother and uncle and a mate to many. Miss you heaps.</p>	<p>Trades</p> <p>FENCING CONTRACTOR Residential & Rural Retaining walls & more High quality workmanship Competitive prices Call Matt 021 1727 148</p>	<p>Painter</p> <p>HAURAKI REGIONAL PAINTERS Over 12 years experience, interior/ exterior. Refs available. Free quotes. Phone Graeme for all your painting needs. 020 485 1312</p>	<p>Situations Vacant</p> <p>We are looking for Tractor, car & bike mechanics. Some experience would be an advantage but training will be given to the right applicant, WoF ticket is preferable. Also A motivated, energetic go-getter to promote & sell our Honda Motorcycle brand & farm machinery. You will need to be able to manage your own schedule & territories, build strong relationships & demonstrate product knowledge, provide solutions to existing & potential customers and have a clean full drivers licence. A company vehicle will be provided. <i>If you're reliable and a team player send your CV to miles@hpmotors.co.nz or ph 027 227 1121 for a chat.</i></p> <p>HPM Hauraki Plains Motors Ltd</p>	<p>Thames-Coromandel District Council Meetings - June 2026</p> <p>Pursuant to Section 46 of the Local Government Official Information and Meetings Act 1987, public notice is hereby given that the following meetings, at the time of publishing, will be held during June 2026:</p> <p>Council Meetings Ordinary Council Tuesday 23 June 2026 - 09.00am, Thames Council Chambers, 515 Mackay Street, Thames.</p> <p>Ordinary Council Tuesday 30 June 2026 - 09.00am, Thames Council Chambers, 515 Mackay Street, Thames.</p> <p>Committee Meetings Infrastructure and Finance Committee Thursday 4 June 2026 - 09.00am, Thames Council Chambers, 515 Mackay Street, Thames.</p> <p>Community Board Meetings Coromandel-Colville Community Board Tuesday 2 June 2026 - 09:00 am, Coromandel Service Centre, 355 Kapanga Road, Coromandel.</p> <p>Mercury Bay Community Board Wednesday 3 June 2026 - 9.00am, Mercury Bay Service Centre, 10 Monk Street, Whianga</p> <p>Tairua-Pāuanui community Board Monday 8 June 2026 - 10.00 am, St Francis house, 248 Main Road, Tairua.</p> <p>Whangamata Community Board Tuesday 9 June 2026 - 10:00am, Whangamata Service Centre, 620 Port Road, Whangamata.</p> <p>Thames Community Board Wednesday 10 June 2026 - 10:00am, Thames Council Chambers, 515 Mackay Street, Thames</p> <p>Please visit www.tcdc.govt.nz/meetings for copies of Agendas and Minutes.</p> <p>A Lavinie CHIEF EXECUTIVE Thames-Coromandel District Council</p> <p>www.tcdc.govt.nz</p>
<p>Church Notice</p> <p>Thames Spiritualist Church, Sunday June 7, 2pm Grahamstown Hall. Speakers: Kay and Davene</p>	<p>For Lease</p> <p>Yards for lease, Thames and Kopu. Suitable for trucks, vehicles or trade business base. Ph 027 440 7101</p>	<p>Storage Unlimited 25 Ngati Maru Highway Kopu, Thames Clean, secure, dry Units available 7 x 3.6m and 7 x 5.5m Phone 07 868 9944</p> <p>STORAGE KOPU, PAEROA "New Units" Ph 027 440 7101 07 868 3033 Safe n Sound Storage www.safestorage.co.nz</p>	<p>Storage</p> <p>Sharyn Clark Piano Tuner & Technician <i>Fully Qualified</i> and Covering all areas of Hauraki and Coromandel M: 0274 485 089 sharynclark22@gmail.com</p>	<p>Last month's winner of the lotto ticket was Jazmine Julian, who found Pete in the May 26th edition in the Paeroa Auto Electrical advert. Go to page 2 for details about how to enter.</p>
<p>Gardening</p> <p>STUMP GRINDING. All sizes, all areas. Thames based. Ph 021 060 7659</p>	<p>House Cleaning</p> <p>Castle on the Coast Cleaning Service. All housework, ovens, laundry, ironing. Ph 027 437 1195</p>	<p>TOTAL STORAGE LTD KEREPEHI / PAEROA We will beat any legit quote for storage in 10ft or 20ft containers T&C's apply 021 67 67 99 info@totalstorage.co.nz</p>	<p>Public Notices</p>	<p>CLASSIFIEDS Call Nikki: Ph 022 130 3885</p>



Tairua 10 The Marina

Consent-ready coastal development

- Consent-ready project
- Mixed-use scheme
- Efficient design layout

Positioned in Tairua's marina precinct, offering a freehold waterfront development opportunity with extensive harbour views and completed design work already in place for a mixed-use scheme. The concept provides for three substantial three-bedroom apartments above ground-floor commercial tenancies, with on-site parking and efficient access. This is a streamlined opportunity in a tightly held waterfront location. Enquire today.

bayleys.co.nz/2202261

973 sqm

Auction (unless sold prior) 2pm, Thu 25 Jun 2026

1030 Victoria Street, Hamilton

View by appointment

Josh Smith 027 229 8865

josh.smith@bayleys.co.nz

M H REALTY LIMITED, BAYLEYS, LICENSED UNDER THE REA ACT 2008



Thames 107 Rolleston Street

Beautifully restored villa, brilliantly modernised

Discover one of Thames' finest renovated villas. This 1910s home has been fully modernised: re-piled, rewired, replumbed, insulated, and largely double-glazed. Soaring ceilings, wide hallways, and period details create timeless elegance, while four double bedrooms—including a master with walk-in wardrobe and ensuite—offer family comfort.

Entertain effortlessly in the designer kitchen with oversized scullery and open-plan living flowing to a covered outdoor area and private courtyard. With generous storage, double garage, and manicured flat section, this turnkey home combines character and contemporary living.

bayleys.co.nz/2180971

4 2 3 2

Auction (unless sold prior) 11am, Thu 2 Jul 2026

96 Ulster Street, Hamilton

View by appointment

Pippa Jackson 027 747 7000

pippa.jackson@bayleys.co.nz

Geoff Graham 021 733 430

geoff.graham@bayleys.co.nz

M H REALTY LIMITED, BAYLEYS, LICENSED UNDER THE REA ACT 2008

ENTERTAINMENT

Free spirits rock out in a rhapsody of a musical

REVIEW

By ALICE PARMINTER

We Will Rock You is the classic tale of David and Goliath, reimagined against a dystopian backdrop inspired by Queen's most iconic hit songs.

Thames Music and Drama's latest show brought to life the battle between the mighty planet-ruling corporation Globalsoft and the feisty non-conforming Bohemian rebels, and delivered a bundle of laughs along the way.

The show opened with the chronically-online Ga Ga Kids, citizens of iPlanet. Their sanitized, upbeat rendition of *Radio Ga Ga* was accompanied by precise choreography, which deliberately felt hollow and unnatural.

But the liveliness of the show almost immediately picked up with the introduction of two non-conformers - Galileo Figaro, played by Keegan Brown, and Scaramouche, played by Olivia Dustow. Ostracised from their peers, the two introduced a first hint of rebellion with their rendition of *I Want to Break Free*.

What followed was a race through Queen's back catalogue as the heroes sought to dodge Globalsoft's minions, find the Bohemians and bring rock music back to the masses.

There was a fun juxtaposition throughout the show between the flat, choreographed robotic movements of the Ga Ga Kids and the eclectic Bohemians.

The Ga Gas were eerily alike: told what to wear, buy, and even think; and with their matching wigs and laboratory-esque costumes it was difficult to tell each character apart.

The Bohemians, in contrast, were a rag-tag bunch of individuals. Clad in an array of outfits inspired by legendary musicians (Madonna, Prince, Tina Turner), and with little knowledge of "rock music" besides



The Bohemians embrace the spirit of rock'n'roll.
Photo: SUPPLIED

what they had scrounged up from discarded posters and magazines, the group's efforts to explain the rebellion were entertainingly funny.

Vocally, the main cast were impressive. Keegan and Olivia had the audience in the palm of their hands from their first scenes to their last. With their powerhouse vocals and endless energy, they were the essence of Queen's theatrical spirit, and the impetus for the plot's increasingly chaotic and colourful progression.

Likewise, the Bohemian leaders, Meat

Loaf (Jody Jamieson) and Britney Spears (TJ Judd), were animated and exciting to watch. Their vocals, and chemistry as a couple, drew the audience effortlessly through several numbers including *I Want It All* and *Crazy Little Thing Called Love*.

On the other side of the war was Jo Haakma as the ruthless Killer Queen. Jo readily switched between smooth, sultry tunes and growling notes as she fought to keep her grip on the minds of her citizens.

She was supported by her unwavering head of police, Commander Khashoggi,

whose sadistic pursuit of the Bohemians was aptly portrayed by Max Rodley.

Audiences will of course be familiar with the music of Queen, and this fun, fast-paced jukebox musical creatively weaves their most popular songs through a plot already littered with pop culture and music references sure to appeal to anyone who has listened to the radio in the last half-century.

DETAILS: *We Will Rock You*, Thames Music and Drama. Show runs until June 6 at the Thames Civic Centre; tickets available from www.thamesmad.co.



- Houses
- Garages
- Farm Sheds
- Commercial
- Garage Doors
- Auto Openers

We take care of everything from start to finish, including consents



Trade Qualified | Licenced Builders | Licenced Designer On Site



90C Kopu Road, Kopu, (next to bridge), Thames • Ph: 07 868 8663 or 0800 374 000
info@carswellconstruction.co.nz • www.carswellconstruction.co.nz