

The Valley Profile

Carson's
BOOKSHOP 1906



Read Play Give

600 Pollen St. Thames
www.carsonsbookshop.co.nz



CoromandelApp



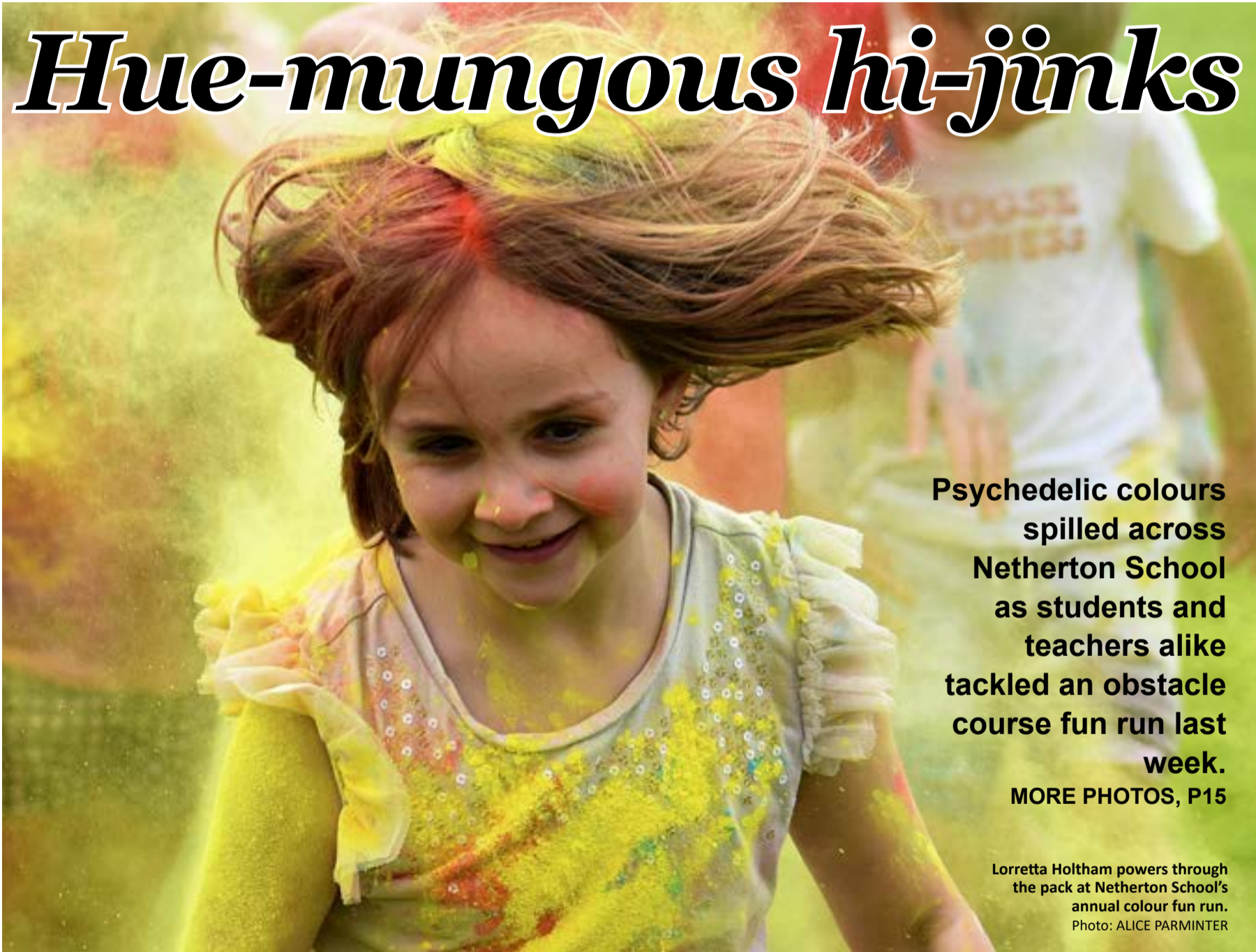
DOWNLOAD FREE TODAY!

Get it on
Google Play

Download on the
App Store

The Valley
Profile

Hue-mungous hi-jinks



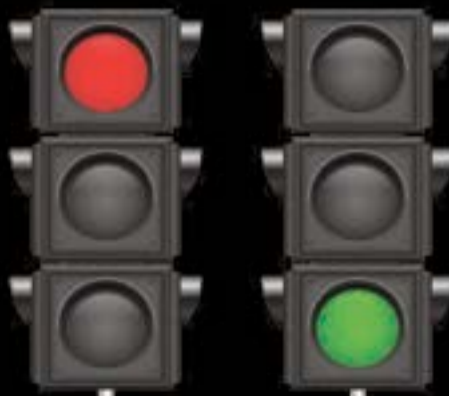
Psychedelic colours spilled across Netherton School as students and teachers alike tackled an obstacle course fun run last week.

MORE PHOTOS, P15

Lorretta Holtham powers through the pack at Netherton School's annual colour fun run.
Photo: ALICE PARMINTER

We all know the drill...

RED is a NO



GREEN is a GO



0800 4 MY BIN (0800 469 246)
www.smartenvironmental.co.nz



smart
environmental

CONTACT US

The *Valley Profile* is delivered weekly to letterboxes in the Hauraki Plains, Paeroa, Waihi, Thames, Thames Coast, plus bulk distribution peninsula-wide.

Our focus is 100% local community news.

'THE PAPER PEOPLE READ'

NEWS/EDITORIAL

Publisher/Editor Teresa Ramsey
Ph 0204 0944 853

editor@valleyprofile.co.nz

Senior Reporter Kelley Tantau

Ph 022 619 4889

kelley@valleyprofile.co.nz

Reporter Alice Parminter

Ph 022 527 0988

alice@valleyprofile.co.nz

ADVERTISING

Ad manager Nikki Sanders

Ph 022 130 3885

Email: nikki@valleyprofile.co.nz

2 QUEEN ST, PAEROA

Ph 07 862 7077



FIND US ONLINE:
www.valleyprofile.co.nz or download the Coromandel App on your smart phone



Hi, my name is Pete the Pukeko and I'm here to help you. Find me in one of the display advertisements in *The Valley Profile*, then email admin@valleyprofile.co.nz with your full name and postal address, and the business name and page number of the ad by the following Monday to go in the draw to win a Lotto ticket. Last issue it was in the Remax ad.

Hauraki helps fund study of Thames pool site

By **KELLEY TANTAU**, Public Interest Journalism funded by NZ On Air

Hauraki ratepayers will help Thames-Coromandel District Council find the best place for its new pool by sharing the costs of a feasibility study.

But Hauraki's mayor says the idea of a sub-regional aquatic facility has been floated before, and came with positives and negatives for both districts.

Back in March, the Thames Community Board heard that in replacing its Centennial Pool at Taipari Park, it should first ascertain whether a sub-regional facility with multiple funders was the better solution.

As part of those discussions, it was agreed that a consultancy agency would research suitable sites in the Hauraki district, and Hauraki councillors this month voted to approve unbudgeted expenditure of \$6500 for the study costs.

The impact on rates for residents will be around 72 cents per property for one year.

"We did feel it was an appropriate method, looking at any facilities we have and whether they could be regional or not, because things are changing, the landscape is shifting, and we can't all afford to have everything," Hauraki Mayor Toby Adams told *The Profile*.

"Maybe some of these things could be shared and maybe this is one of them - but we don't know."

The Hauraki district has three community pools, one each located in Paeroa, Ngātea, and



Thames' Centennial Pool needs to be removed by 2027. A feasibility study that is well underway will now determine where the best place for a replacement is.

Photo: KELLEY TANTAU

Waihi.

According to a report, the Paeroa and Ngātea pools were more than 50 years old and the council was planning upgrades.

Its Waihi pool, located on the Waihi College grounds, had "a number of safety repairs that needed to be addressed", requiring a "significant investment" by council.

The average annual cost to maintain and operate the three Hauraki pools over the past three years was \$800,000.

"A sub-regional pool comes with the benefits of being able to share the costs," Mayor Adams

said, "but then it does come with the negatives of: someone has to travel, if not everyone, and then you wonder how the usage keeps going up. It's a double-edged sword; I don't know if it's the right thing or the wrong thing, and until you get the facts and figures and numbers in front of you, it's pretty hard to make a robust decision."

"But we've got three pools... they get good usage in the three main towns and we wouldn't want to see that usage drop off by having a facility that was not fit-for-purpose for our community members."

The Thames Centennial Pool is located on an urupa (burial ground) and under the agreement between Thames-Coromandel District Council and Ngāti Maru, it was decided that the facility would be relocated by 2027 and the land returned to Ngāti Maru.

According to TCDC, the feasibility study was "well underway" and a short-list of possible site options will be released in October, with the council then asking the public for their views.



FORAGE

READ BROS. COOK • BAKE • CREATE

A unique collection of kitchen and homeware carefully selected each season for those who love to gift, cook and create.



READ BROS.



Hardware

A traditional hardware store where you will find quality goods and quality service, every time.

www.readbros.co.nz
308 Pollen St, Thames
07 868 6608

Accountants

The Hauraki Taxation Service Limited

- Established 1982
- For out of town independent accounting advice
- Approved agents for Inland Revenue Department
- Offices in Thames & Coromandel Town



328 Pollen Street, Thames
Ph/Fax: 07 868-9710

E: thames@haurakitaxation.co.nz

95 Kapanga Rd, Coromandel
Ph/Fax: 07 866-8660

E: coro@haurakitaxation.co.nz

Thames Tides

Wed Aug 16	Thu Aug 17	Fri Aug 18	Sat Aug 19	Sun Aug 20	Mon Aug 21	Tue Aug 22
Morning 12:54am 0.9 7:12am 3.0	Morning 1:35am 0.8 7:54am 3.1	Morning 2:14am 0.8 8:33am 3.1	Morning 2:52am 0.7 9:10am 3.2	Morning 3:28am 0.7 9:45am 3.2	Morning 4:05am 0.7 10:20am 3.2	Morning 4:42am 0.7 10:57am 3.2
Afternoon 1:09pm 0.7 7:28pm 3.2	Afternoon 1:48pm 0.7 8:06pm 3.2	Afternoon 2:25pm 0.6 8:43pm 3.3	Afternoon 3:01pm 0.6 9:19pm 3.3	Afternoon 3:37pm 0.6 9:56pm 3.3	Afternoon 4:14pm 0.7 10:33pm 3.2	Afternoon 4:54pm 0.8 11:12pm 3.2
7:01am 5:44pm	7:00am 5:45pm	6:59am 5:46pm	6:58am 5:46pm	6:56am 5:47pm	6:55am 5:48pm	6:54am 5:49pm
Best At 12:11pm	Best At 12:33am 12:54pm	Best At 1:15am 1:36pm	Best At 1:56am 2:15pm	Best At 2:35am 2:55pm	Best At 3:15am 3:35pm	Best At 4:17pm
New Moon Rise 7:09am Set 5:21pm	Rise 7:37am Set 6:21pm	Rise 8:02am Set 7:20pm	Rise 8:24am Set 8:18pm	Rise 8:46am Set 9:16pm	Rise 9:08am Set 10:15pm	Rise 9:31am Set 11:14pm

*Not for navigational purposes. Graphic supplied by OceanFun Publishing Ltd. www.tidewiz.com www.tidespy.com www.ofu.co.nz

MOON AND FISH KEYS

New Moon
 First Quarter
 Full Moon
 Last Quarter

Good Fishing
 Fair Fishing
 Not So Good

TIME DIFFERENCES FOR OTHER PLACES

To determine tide times at the following places, add (+) or subtract (-) the given time difference from the Thames times listed in the calendar.

PLACE	Hr	HIGH	Hr	LOW
Coromandel	-0	05	-0	04
Whitanga	-0	01	-0	05
Tairua	+0	10	+0	21
Whangamata	-0	03	-0	05
Waihi Beach	-0	12	-0	12

Reports cost \$20k more than Vibe installation

By KELLEY TANTAU, Public Interest Journalism funded by NZ On Air

Thames ratepayers spent more on surveys about The Vibe than they did to have The Vibe installed.

And while he wouldn't be drawn on whether he believed the project was money well spent, Thames Community Board chair Adrian Catran said he found the "whole matrix" of the controversial Mary St closure to be "disconcerting".

In an Official Information Act request seen by *The Profile*, Thames-Coromandel District Council confirmed it had spent \$54,940 of public money on two evaluation reports about The Vibe.

The first was undertaken in 2022 at a cost of \$21,980.

The second was completed this June, ahead of the community board's verdict to remove The Vibe, and cost \$32,870.

It was initially set to cost \$29,750, and included survey development, research over three days, analysis of data, and analysis of an open-ended question of up to 600 responses, but because it received more than 1000 responses, another \$3120 was spent for the consultants to analyse the additional feedback.

This means the district council spent close to \$20,000 more on undertaking evaluations than it did contributing to The Vibe's construction [\$35,569.50].



Thames Community Board chair Adrian Catran and his two beagles in front of the to-be-removed Create the Vibe.

Photo: KELLEY TANTAU

Thames Community Board chair Adrian Catran said there's "a bigger situation" than just money spent.

"I was not part of the original community board that made the decision, and I would not like to cast dispersions on the previous board as to why they decided to put The Vibe in place," he said. "The money's been spent - and I think Waka Kotahi found this was an experiment in trying to create

traffic-calming pedestrian areas throughout towns in New Zealand, and it didn't work."

Mr Catran said he supported a review into how council went about installing The Vibe "in the first place".

He had concerns over the council's initial consultation, which *The Profile* earlier reported drew criticism for not having a "status quo" option.

"The most disconcerting thing for me is that they only

asked two questions: do you want the street closed, or do you want the street one-way? They didn't include a third option - do you not want The Vibe at all? And when you get Hobson's Choice, it's very awkward for people to make a decision," Mr Catran said.

"The concept, the idea of an open space - trees and shrubs and seating - is fantastic. But it's never ever been used in the manner they expected. In other

words, it was an under-utilised area and we could've done better."

The Thames Community Board agreed to spend \$15,120 to extend the life of The Vibe for one year back in June, 2022.

The council also purchased a section of land in Mary St adjacent to The Vibe for \$221,069 before public consultation began on the project. However, the land didn't form part of the Create the Vibe space and at the time of the purchase in late 2020, it was considered the property could "provide opportunities to be utilised as part of any future redevelopment of the Thames CBD".

Mr Catran, whose return to the community board in 2022 came after his stint as deputy mayor between 2004 and 2010, said his focus to create a heart for Thames instead lay within the Grahamstown area of Pollen St.

"If we create this type of environment they intended to create here down there - people sitting out in the sunshine, a one-way traffic flow - Grahamstown would be the most fantastic part of Thames," he said.

He also confirmed that the closing of Mary St would not happen again under his watch, and that he would instead work towards making Grahamstown a "heritage precinct".



Earth Angel Magic

crystals, fairies, dragons and more...
A little bit of something for everyone.

11 Belmont Rd, Paeroa
027 486 5680

Five generations, one store

READ BROS.
EST. 1867
Hardware

- Fastenings and Extrusions
- Key cutting and Locksmithing
- Interior and Exterior Paint
- Marine Supplies
- PPE and Footwear
- Tools
- Hose and Rubber
- Engineering and Welding Products

308 Pollen Street, Thames
Telephone 07 868 6608
www.readbros.co.nz

LA-Z-BOY
Get Comfy **SALE** 25% off*
all La-Z-Boy!

BAXTERS LA-Z-BOY FURNITURE GALLERY
Live life comfortably.

FURNITURE & BEDS R US
205 SEALEY ST, THAMES | PH 07 868 6128

Hi there. I'll be in your area and I'd love to catch up.

I've booked stalls at all our local markets on the Coromandel so please come and talk to me about your issues and concerns. Or just come and say hello!

Sat 19/8 - Waihi Sun 20/8 - Whangamata
Sat 26/8 - Omokoroa Sun 27/8 - Hikutaia

If you can't make it I can come and meet with a group / cottage meeting. Contact me on 027 780 0033 Beryl.riley@labour.org.nz

/BerylRileyLabour

Beryl Riley for Coromandel

Labour IN IT FOR YOU

Authorised by Bob Salmond, 187 Featherston Street, Wellington

Education

Muso discovers passion for piano

40 subjects on offer

By KELLEY TANTAU, Public Interest Journalism funded by NZ On Air

A Hauraki Plains College student who admits he didn't have the patience for the violin, has become a virtuoso of playing the piano instead.

Lucas Giles-Kang recently impressed his peers at the Ngatea college by playing Billy Joel's *Piano Man* - captured in a video that has had more than 29,000 views on Facebook.

But Lucas' heart lies with a more classical repertoire, and he hopes he'll one day be able to pursue the art professionally.

The 14-year-old year 10 student began learning the piano after being introduced to it at his cousins' house almost two years ago.

"Of course, their piano was over one hundred years old - it was terrible and out of tune and it sounded more than a semitone down," he said. "But I love Mozart and Chopin and after a while, I did piano coursebooks, but didn't even finish the fourth one because I got bored of it..."

"And you can't play music unless you actually enjoy it."

So, Lucas decided to teach himself how to tickle the ivories, and eventually tackled a "really complicated piece".

That piece was Chopin's *Heroic Polonaise in A Flat Opus 53*.

It is regarded as one of Chopin's most admired compositions, with the physically-demanding piece featuring difficult technical as-



Lucas Giles-Kang has become a piano virtuoso at the age of 14.

Photo: KELLEY TANTAU

pects, such as trills with the weaker fingers and quick scales.

"It was very complex," Lucas said, "but I seem to have got the hang of it now."

He admitted he "gave up once or twice" when trying to master the composition, but said he was inspired to continue learning by a Russian pianist - the late Vladimir Horowitz.

"He was very skilled, and I don't think anybody could replicate him, and he was kinda what made me continue with this piece," he said.

Lucas taught himself how to

read piano sheet music, but when he performed the seven-minute-long *Heroic Polonaise* for *The Profile*, he remembered the piece by heart.

"All the time, in my head, chords will be coming along. I think about them all the time," he said. "But this piece was the first difficult piece I tackled, and I notice that when something's really difficult, sometimes you'll play it well, sometimes you won't play it well, but after that, you start to develop more confidence."

"I performed it for the school,

but I really wasn't happy with the way I played, because I tried to do it too much like Horowitz - and I have to be myself."

When asked if he had plans to pursue piano, Lucas said he thought "about it every day".

"You don't always make the most money out of music, and it's a lot easier for some people than others to pursue it, but everyone from any background still has to work hard," he said.



Exciting changes ahead for HPC Year 11's 2024



Digital Designs (DVC, Digital Technology)

This course is designed to introduce students to a wide range of elements that form part of the exciting and the ever-changing world of I.T. You will be challenged to learn basic animation, 2D / 3D modelling, game development, and programming skills. Using coding and a range of applications, you will create a beta test to be done on a VR headset.

Outdoor Experiences (PE, Outdoor Ed)

Do you enjoy physical experiences in the outdoors with your fellow students? Do you work well in a team? The Outdoor Experiences course is designed with a focus on overall Hauora, well-being and Kotahitanga (unity) through tramping, camping, rock climbing, mountain biking, Adventure Based Learning and other outdoor activities.

Unleashed Product Design, Makerspace (Technology)

Students will explore principles of the design industry and new emerging technologies, use CAD software to build and create a product for market, and in some cases possible testing through VR. You will learn how to set up and use laser cutting, waterjet cutting and 3D printing. Products students can choose from will include: jewellery, digital products, sculptural metal designs, forged and cast metal designs, furniture.

Sport, Hope and Resilience (English and Health Studies)

"Hardships often prepare ordinary people for an extraordinary destiny." - C.S. Lewis. We all love stories of heroes and legends. But what about real-life examples? People who push their bodies and minds to the limits, stare impossible in the face and prove everyone wrong. Join us in attempting to unlock the power of hope and resilience and explore the unlimited potential of the human mind and body through case studies of ordinary humans doing extraordinary things.

Pageant queen sets sights on Top Model

By ALICE PARMINTER, Public Interest Journalism funded by NZ On Air

For 12-year-old Arleanna Drake, the catwalk is her place to shine.

The Karangahake resident was crowned the winner of the Little Miss Exquisite Queen 2023 pageant on August 5. Now, she's got her sights set on Aotearoa's Top Model.

The Little Miss pageant was a way for Arleanna to follow her interests of fashion and modelling, having a bit of fun along the way. When she won, however, Arleanna was taken by surprise.

"When they said my name, they said my name wrong," Arleanna said of the experience.

"It took me a moment to realise 'oh, they actually meant me'.

"My brain was just like hold on, we won, and then my body kind of wanted to jump up and down."

Arleanna had been preparing for the pageant since March, with monthly rehearsals, fashion shows, confidence building and photography sessions. On the night, she took three turns along the catwalk, showcasing a black-tie outfit, a traditional outfit and finally her eveningwear look.

Mum Leanne said Arleanna had gained a lot of confidence throughout the process.

"It's definitely made her come out of her bubble," Leanne said.

"Even backstage the other night, a couple of the other young girls were starting to get a bit nervous and panicking ... she was like, 'we can do this, just go out there and do your thing, smile'. So she's definitely gained that confidence."

For homeschooled Arleanna, it was also a chance for her to meet other like-minded kids and get a feel for the industry.

"She's got to meet other kids along the way that enjoy the same thing," Leanne said.

Now, Arleanna's focused on the upcoming



Arleanna Drake's traditional outfit was one of three looks she wore to take out the crown at the Little Miss, Exquisite Queen 2023 pageant.

Photo: BIPIN PHOTOGRAPHY

ing Top Model contest. This pageant is more intimate, Leanne said, with different requirements. She has to prepare a talent

- Arleanna and Leanne are working on a dance duet - and multiple outfits, including an eveningwear look and a look based

around the colours of the New Zealand flag.

There is also a charity fundraising component. Arleanna and Leanne are holding a fundraiser for kids' mental health charity I Am Hope. The event is set to be a toe-tapping music extravaganza, featuring artists Coral and Toe Jam, and with a number of raffles.

The charity was close to the family's heart, Leanne said.

"For Arleanna, for her personal struggles when she was going to school, it was quite connected to her as well as her brothers and others she knows who have used the charity," she said.

"Arleanna's been helping towards organising two raffles to help towards the music fundraiser next week ... she wants to raise \$1000 at least towards the charity."

Leanne was full of praise for the whole pageant experience.

"It's not everyone's cup of tea, the pageant, beauty side of it, but if you look at it from making friends, gaining confidence, learning new skills, widening and opening up a different experience that they would enjoy, I'd say go for it," she said.

"It's definitely full on but at the end of the night ... she enjoyed it and the [excitement], and then afterwards was like, 'I could do that all over again'."

Arleanna agreed, saying it was something she got a lot of enjoyment from.

"I still have some moments where I get really nervous, but then I have to shut them out and just do what I can do and try my best," she said.

"[After I feel] excited and happy that I did it."

DETAILS: I Am Hope charity fundraiser, August 18, 7pm at Karangahake Hall. Limited tickets, find: Music Night Fundraiser - "I Am Hope" event on Facebook.



10th YEAR

ANNIVERSARY SALE

PUREFLEX
Queen Mattress + Base

ROCK BOTTOM PRICE!

All sizes available

FREE PILLOWS

Get 2x Teddy Fleece Pillows with Pureflex Queen Sleepset

NOW ONLY \$1345

HOT DEAL!

BOSS LIFT-UP CHAIR

NOW ONLY \$2349

EUROPAEDIC
Queen Mattress + Base

50% OFF

All sizes available

FREE TENCEL DUVET

with every Europaedic Queen Sleepset

WAS \$5770
NOW \$2885

FREE LOCAL DELIVERY*

ON PURCHASES ABOVE \$999 WITHIN 15KM RADIUS FROM STORE

flybuys Earn Flybuys with us!

Shop 22, Goldfields Shopping Centre, Thames

Mon-Fri 9am - 5pm / Sat 9am - 4pm / Sun 10am - 3pm Ph: 07 868 3332

Beds4U reserve the right to amend any misprints or error within this advertisement.

BEDS4U

.co.nz

Your local sleep experts

Countdown to the start of the new kerbside collection service



19 days to go!



**It's a wrap
Way to go
Hauraki!**



We did it and we couldn't have done it without you

Thank you for the huge level of co-operation during the new bin roll out and RFID tagging exercise.

- ✔ 7197 properties have received their new rubbish and food scraps bin.
- ✔ Flat, round, white RFID tag can be found under the lip of your bin. 4708 RFID tags have been attached to the bins presented at kerbside (a success rate of 65.4%!).

Here's what's happening if you haven't received your new bins or you weren't able to get your recycling bin out on the RFID tagging dates.

1. Contact us if you haven't received your new bins on **0800 734 834** or email **info@hauraki-dc.govt.nz**
2. Missed recycling bins will be RFID tagged as and when they are put out for collection, from 4 September 2023.

Please bring all your bins in from kerbside now and remember, only use your new rubbish bin and food scraps bin from Monday 4 September.



Did you get a black bin lid clip attached to your recycling bin?

It's your lucky day!

The bin lid clip wasn't part of our contract, but in their enthusiasm, the bin delivery company started attaching them to the recycling bins when they started the RFID retrofit. So if you got one, it's your lucky day, you get to keep it.

Apologies for any confusion - the black bin clip is not the RFID tag, it's used to keep the bin closed when the wind blows, which is really handy.

WASTE-ED
with Kate

NO TIME TO Waste

Tiakina a Papa! Mimiti te Papa!

Our new kerbside collection service is the opportunity to reset everything we know about reducing waste and getting recycling right and Kate Meads, New Zealand's sustainability champion, is just the person to inspire the change.

Please join us for an informative community event.

Place: **Paeroa War Memorial Hall**

When: **Tuesday 22 August**

Time: **11am**

Refreshments: Tea and scones

"Inspiring, motivating and un-missable, see you there!"

Announcing the first two Lucky Number draws

Is it your lucky day?

Time to check the back of your Rubbish and Recycling Flipchart to see if you're a winner* of a six month supply of green HDC rubbish bin tags, worth \$96.00.

Numbers are: **1094** and **3849**

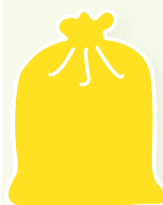
If you're a winner, congratulations! You'll need your flipchart as proof of your winning number. Contact us on 0800 734 834 to arrange collection of your prize.

*Not open to Council employees or their immediate family



Green HDC rubbish bin tags available now

The \$8 (recommended retail price) rubbish bin tag is available now from our service centres or you can do a bulk order online at <https://my.hauraki-dc.govt.nz/do-it-online/property-rates-bins>. Minimum of 5 tags for online orders. Check our website for list of retail outlets.



Goodbye yellow plastic bags

Just a reminder that the yellow prepaid plastic bags will not be available for sale from 1 September and won't be collected at kerbside from Monday 4 September. If you have a supply to use up, you can take them to the Waihi or Paeroa Refuse Transfer Stations till the end of December, free of charge. There's no refund for unused bags.



MAKE LANDFILL YOUR LAST CHOICE

Toe-tapping fun for seniors taking tap exams

By ALICE PARMINTER, Public Interest Journalism funded by NZ On Air

It's Wednesday morning, and the Cooperating Parish in Paeroa echoes with the sound of metal against the wooden floor. A group of women, the eldest in her late 80s, are clicking and stepping their way through a tap routine as others file in for a strength and balance class.

This is Sheryl Krissansen's domain, working with people to bolster their mobility. Up to 24 people, mainly seniors and people with mobility issues, attend the strength and balance class. Sheryl, a former dancer, began eight years ago.

"Just because I've gotten a little older myself, I thought why sit down and veg out?"

Beginning with a provided programme, she soon found it quite boring.

"So when Covid struck, I got stuck in and I revamped the whole programme," she said.

"I've tried to make it interesting enough that people don't realise the exercises they're doing. It's just fun to them, they don't realise that I'm actually making one side of the brain work and then the other side."

Sheryl, an ACC-accredited teacher, said her goal was to help people flex their muscles and reduce their reliance on mobility aids when walking.

"Maintain their mobility, this is my aim," she said.

"Giving them the confidence and strength in themselves."

Sheryl also runs a tap class with



A group of senior tap dancers are about to sit their dance exams. BELOW RIGHT: Sheryl Krissansen, centre, leads the group.



Photos: ALICE PARMINTER

six of the women; several others do ballet.

The dance classes aren't just for practice; they recently performed at a concert in Te Aroha, and they will also be sitting medal examinations on August 20.

"This is a hell of an achievement, they're as enthusiastic as anything," Sheryl said.

"They put their heart and soul into it, and okay, their movements are not perfection - but they're doing what they can and I don't see

why I should knock them down for that."

Tap student Katy Edmonds said the classes had done wonders for her balance after suffering a brain injury.

"I was diagnosed with complex regional pain syndrome five years ago ... I had to have a walking stick because it affects the central nervous system," she said.

"Since I've been coming here and doing ballet - I don't need a stick any more."

Many of the other students have similar stories. Former singer Christine Daverne, who along with Sheryl runs K & D Performing Arts, has also found the classes helped her mobility.

"I broke and dislocated my right ankle, it wasn't repaired correctly ... all my ligaments were out of alignment and my balance was really off," she said.

"Coming along to these classes, within about three, four months I was back to being able to [bal-

ance]."

Sheryl said she loves working with people, and takes delight in seeing their physical progress.

"It's brilliant. And the camaraderie that's coming out of it is amazing," she said.

"Nobody feels threatened in this class because you don't need to be - you just do what you can manage."



Thames Autos



A Division of Takaniel Motors Ltd

R.M.V.T.



HOME DEMONSTRATIONS AND DELIVERIES AVAILABLE WE CAN COME TO YOU



www.thamesautos.co.nz

2006 Holden Commodore
V6 Auto, New 17" Alloys



NOW \$7,990

2009 Toyota Vellfire
2.4Ltr Auto, Big 7 Seater, Immac Cond, Low Km



\$14,990

2016 Holden Cruze
1.8Ltr Auto, NZ New, Top Value



\$11,990

2009 Hyundai Tucson
AWD, Auto, Low Kms, Top Condition



\$8,990

2008 Nissan Note
1.5Ltr Auto, Good Kms, Excellent Condition



\$7,990

2010 Holden Captiva
2.4Ltr 4WD, 7 Seater



VALUE \$9,990

2012 Mitsubishi Triton
5 Speed, Diesel, 4X4



LOOK \$16,990

2012 Holden Colorado
Auto Diesel, 2WD, Excellent Condition



\$17,990

LEYLAND STOWE

Mob: 027 355 5152 Ph: 07 868 8981
or 0800 868 898
609 Pollen St, Thames RMVT
thamesautos@xtra.co.nz



No Deposit Finance available on all vehicles. Full workshop servicing & repairs available including Auto Electrical service

Our Coromandel

News from Thames-Coromandel District Council



16 August 2023

Get ready for your new rubbish and recycling services starting this September

Household rubbish and food scraps will be collected on red weeks. Mixed recycling, glass and food scraps will be collected on alternate yellow weeks. New services start from Monday 4 September and will be on Wednesdays for Thames Coast properties and Thursdays for Thames & Surrounds and Thames Rural South. Take a look at your new collection calendar tcdc.govt.nz/bindays



Watch out for your new bin deliveries – check out the schedule tcdc.govt.nz/binrollout for when you'll get yours. Wheel your bins (the food scraps bin will be inside

your rubbish wheelie bin) inside your property. Open your food scraps bin to get your leaflet explaining the whole service. Alternatively, you can read the leaflet at tcdc.govt.nz/newkerbside

Find out more about the extended opening hours of our seven Refuse and Recycling Transfer Stations, and how

you can use these to drop off rubbish and recycling if you are not at home on your collection day. tcdc.govt.nz/newRTS

Please note that all seven RTS will be closed on Thursday 31 August while the changeover is organised.

If you have any queries, please contact our friendly Customer Services team. tcdc.govt.nz/contact-us

Create the Vibe to close

Work will start very soon to reopen Thames' Mary Street to two-way vehicular traffic after a unanimous decision by Thames Community Board to remove Create the Vibe.

The vote followed community research by consultants WSP which brought in nearly 1,500 contributions by the public – through an online survey and one-to-one interviews in the street. The community response showed that there was not sufficient community support to keep the space.

Create the Vibe opened on 1 March 2021 as a trial 'Street Intervention' with the aim of increasing community vibrancy and to provide a safe and accessible town centre. The project was funded 90 per cent by Waka Kotahi NZ Transport Agency, with the remaining 10 per cent from the Thames Community Board.

Community Board members described how COVID-19 restrictions and the extreme weather events over the last few years meant the space wasn't as well used or supported as it may have been.

In voting to remove the space, Community Board members also asked our Council to investigate a number of initiatives for the surrounding area including: traffic-calming measures, reduced speed limits and improved crossings for pedestrians over Pollen Street and Mary Street.



Tapu-Coroglen Road latest

After a contractor is decided from tenders to fix the Tapu-Coroglen Road in mid August, work on permanent repairs is planned to start in early October when weather conditions are more suitable.

When these works take place the road will be closed for the

duration of the works. Temporary barriers will prevent unauthorised use of the road through the construction site to protect the workforce and public. Interference with these works will result in delays in permanently reopening the road and additional costs to our Council and ratepayers.

We have had reports of contractors' staff being verbally abused and threatened. Details of both incidents have been passed to the Police. In addition, there have been repeated cases of traffic management signs being stolen from sites on the road, endangering the public. If you have any information regarding these events please contact the Police quoting incident number #p055515021.



KŌPŪ MARINE UPDATE

There's been major progress in building the recreational boat ramp as part of the Kōpū Marine and Business Precinct. Concreting has taken place – thanks to Ian Howe Concrete Pumps and Compass Concrete. Quality inspections have been completed. Contractors Land + Sea Civil are now adding the finishing touches including placing the last of the rock around the edges of the ramp to set it in place with the rest of the sea wall.

There's also been substantial work done on the commercial wharf. Piling is well underway with 16 piles driven to height. Heron is continuing to install the concrete deck panels.

The next steps are to relocate the crane to the recreational boat ramp in order to install pontoon piles. The cofferdam will be relocated to the commercial slipway to enable Land + Sea Civil to commence works on that. The remaining 50m of rock revetment is being completed, and the commercial wharf piling will be done from a barge in late August.

tcdc.govt.nz/kopu



Thames Community Board UPDATE

A word from our Thames Community Board Chair Adrian Catran JP:

"Ten months into our three-year term, I am reasonably happy as to what we have achieved so far. The Kōpū Marine Precinct has made great progress; flags are back up in Pollen Street; and Porritt Park equipment has been ordered. Meanwhile the investigation for a new aquatic centre and sports fields is well underway and the issue of Thames' Create the Vibe has finally been resolved."

adrian.catran@council.tcdc.govt.nz



The Board's next meeting is on Wednesday 13 September, 10am in the Council Offices. Recordings of all our Council and Community Board meetings are posted on tcdc.govt.nz/meetings, where you'll also find meeting agendas and minutes.

SHARE YOUR VIEWS ON A DRAFT BIKING STRATEGY FOR OUR REGION



tcdc.govt.nz/drafft biking strategy

[@ThamesCoromandelDistrictCouncil](https://www.facebook.com/ThamesCoromandelDistrictCouncil)
[coromandel_tcdc](https://www.instagram.com/coromandel_tcdc)
 Get our free eNewsletters!
www.tcdc.govt.nz/subscribe

tcdc.govt.nz
 customer.services@tcdc.govt.nz
 Private Bag, 515 Mackay St, Thames
 Phone: 07 868 0200

Rural Life

Piggery effluent polluting stream

Waikato Regional Council has successfully sought an interim Enforcement Order from the Environment Court to stop piggery effluent entering a waterway north of Te Aroha.

It's the first time the council has applied for such an order.

The application was sought and granted on Friday, August 4, by Judge Melinda Dickey as a result of alleged ongoing, uncontrolled and unauthorised discharges to both land and water.

The order requires the piggery company to cease discharging a contaminant on to land in circumstances which may result in it entering water.

To be able to comply with the order, the company will be required to explore options of reducing stock numbers or otherwise reducing the level of effluent currently stored, and explore lawful options for relocating pig effluent offsite, council said.

Since seeking the order, council has responded to a further significant discharge of effluent reported about 8.30am on Monday, August 7.

Landowners have been warned that piggery effluent has entered the Patuwahao Stream which flows to the Waihou River.

"There will be faecal bacteria, ammonia and high nutrients from the piggery effluent in the water, so we're urging landowners taking surface water downstream from this site to exercise cau-



Landowners have been warned that piggery effluent has entered the Patuwahao Stream. Photo: SUPPLIED/WRC

tion until the risk has passed," council regional compliance manager Patrick Lynch said.

"Applying to the Environment Court for an interim Enforcement Order is unprecedented in this region, but we view the ongoing discharges at this site to be an emergency. They are having an extreme impact on the environment and community, which we feel necessitates such action under the Resource Management Act.

"This latest incident will form part of an active investigation by the council, and as such we're unable to provide any further information at this time," he said.



For all your Dairy Solution, Pumping, Irrigation solution, Breakdown support and much more. Servicing the Hauraki Plains since 1984.



info@milkingmachines.co.nz
www.milkingmachines.co.nz

31 Orchard West Road, Ngatea Ph: 078677360

COMPREHENSIVE VETERINARY SERVICES FOR FARM & COMPANION ANIMALS



Your 100% Local Vets

NGATEA 07 867-7056

PAEROA 07 862-7056

THAMES 07 868-3013

PL0619006

We are requiring a person with a Mechanical background and a mind to work on a variety of products in our busy workshop



Tractor work, Motorbike servicing, lawnmower servicing, and car servicing.



If you think you have the skills, give us a call.



Hauraki Plains Motors

1 Pipiroa Road, Ngatea • Ph 07 867-7021

Miles 027-227-1121 Email: miles@hpmotors.co.nz



- Farm Effluent Equipment
- Full System Design
- Installation
- Service



0800 4 EFFLUENT | www.williamsirrigation.com

Paeroa Auto Electrical

• Auto Air Conditioning

- Latest Diagnostic Tools for your European Car
- Range of Batteries for Cars, Trucks, Tractors, RVs and more

• On Farm Auto Electrical Service

Ph: 07 862 8565 Email: unipoint@xtra.co.nz
3 Belmont Road Paeroa



Come and see us for more info

* Finance Available

Central Motors

Hauraki Ltd

60 Orchard Rd, Ngatea • 867 7524

www.centralmotors.co.nz

Andrew - 027 285 0349

John - 027 279 6799

Rural Life

Buddy's unexpected find

Meet Buddy. He is a Foxy x Jack Russell terrier. Energetic by nature, little Buddy lives up to his name, loving life and going places with his owners, including at the local waterfall.

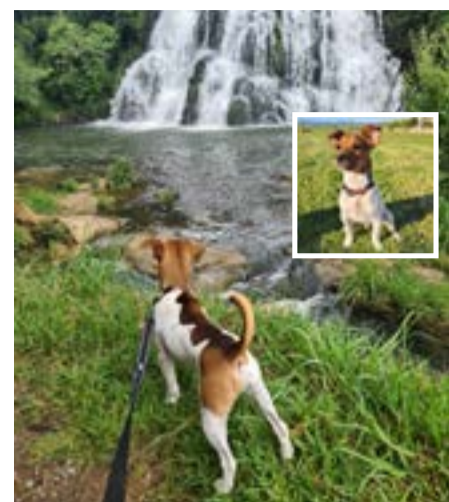
When he was six months old, Buddy visited Anexa Thames for his castration. The day started with a pre-op health check – the vets checked him over to ensure he was fit and well, gave his owners the opportunity to ask any questions, and explained the benefits of getting some testing done. This testing is helpful to the vet as the results are used to understand how well Buddy's internal organs working, allowing the team to: Best support Buddy while he is under anaesthetic; Identify and manage any health concerns early; And if the test shows nothing to worry about, the test is still valuable to provide an individualized baseline for the vets to compare to in the future.

Buddy's owners opted for reventative care testing (blood panel, urinalysis and fecal sample). Even though Buddy was healthy and well-within-himself and displayed no signs of health concerns, Buddy's results showed there were ++ Calcium Oxalate Dihydrate crystals in his urine. This was unusual and prompted the team to investigate further.

This wasn't Buddy's first stint at the vet's. Buddy had broken his leg when he was only three months old and had undergone treatment to help it heal. Post-treatment, his owners decided to add a bone and joint supplement to his diet to support his recovery.

The supplement was made up of calcium, glucosamine, green lipid mussel, omegas and other multivitamins.

The extra calcium provided by the supplement was a source of calcium, but at the dose given, probably not enough calcium to create crystals in Buddy's urine. The Thames team also looked at Buddy's diet to check if he was on a suitable diet for his age and stage. It turned out Buddy was eating Royal Canin



Buddy the Foxy x Jack Russell. Photo: SUPPLIED

starter for puppies under two months old and pregnant/lactating dogs (this food has extra calcium in it).

Unfortunately, his owner accidentally bought Starter food instead of the Stage 2 Mini puppy food from Royal Canin.

Buddy had been accidentally over-supplemented. He was getting extra calcium from the starter food and bone and joint supplement, causing the crystals!

Buddy's castration operation went ahead without issue, and he began eating the correct food type for his needs. Buddy recently celebrated his first birthday and is crystal-free, which is great news!

You don't always think of these things at the time... However, something simple as over-supplementing with calcium has the potential to result in urinary issues like urine crystals and bladder or kidney stones. It was very good for Buddy to identify this issue early.

- Supplied by Anexa



YOUR LOCAL FEED SUPPLIER IN PAEROA

All blends are custom made through a mixer wagon so all your girls are getting the same uniform feed/minerals. Custom made to fit your farming system and diet requirements.

- ✓ PK/Molasses.
- ✓ Bulk products direct.
- ✓ Custom Blends all through mixer wagon for a more uniform blend.
- ✓ Minerals/Trace Minerals/Custom Made Mineral Blends.
- ✓ Contracts.
- ✓ Auger and bulk delivery for silo and bunker.

CALF MEAL

- ✓ Highly palatable Calf Meal with all the Vitamins & Minerals with Coccidiostat.
- ✓ Available in 500kg and 1000kg bulk bags.
- ✓ Competitively Priced.



We work while you & your girls Make the Moolah!

CALL NOW 0272 240 728

myfeed.co.nz | Brett@myfeed.co.nz

Rural Life

New marine protections in Gulf

The government last week announced a plan to increase protected areas of the Hauraki Gulf.

However, the plan did not ban destructive fishing methods, such as bottom trawling, which conservation groups say is an “outrage”.

On August 9, Prime Minister Chris Hipkins announced new marine protections, which included a commitment to restrict the practice of bottom trawling from areas of the Gulf.

“The Hauraki Gulf -- Tikapa Moana -- is an absolute treasure and needs to be protected for the enjoyment of future generations,” Prime Minister Hipkins said.

“It’s also an essential and traditional source of food, and a vital part of our economy for the tourism, transport and seafood sectors, with a recent assessment putting the economic value of the Gulf at \$100 billion.

“The Gulf, however, is at risk and its ecosystems are under immense pressures, causing concerning declines in marine life and seabird populations.”

The government plans to introduce the Hauraki Gulf/Tikapa Moana Marine Protection Bill

into Parliament before the House rises, nearly tripling the total area under protection in the Hauraki Gulf Marine Park from just over 6 per cent to about 18 per cent.

The Bill includes: Extending the country’s first marine reserve, Cape Rodney (Goat Island) and Cathedral Cove, Coromandel Peninsula; Creating 12 new high protection areas to protect and restore marine ecosystems, while allowing for customary practices of tangata whenua; Five new seafloor protection areas to preserve sensitive seafloor habitats by prohibiting bottom-contact fishing methods and other activities which harm the seafloor.

LegaSea, a non profit organisation dedicated to restoring the abundance, biodiversity and health of New Zealand’s marine environment, says government approval for a plan that supports the ongoing use of destructive fishing methods along New Zealand’s coastline was an “outrage”.

“There’s no plan to provide New Zealanders who are already struggling to feed whānau with affordable kaimoana. There’s no plan to support the struggling regional economies where kaimoana is taken from. There’s

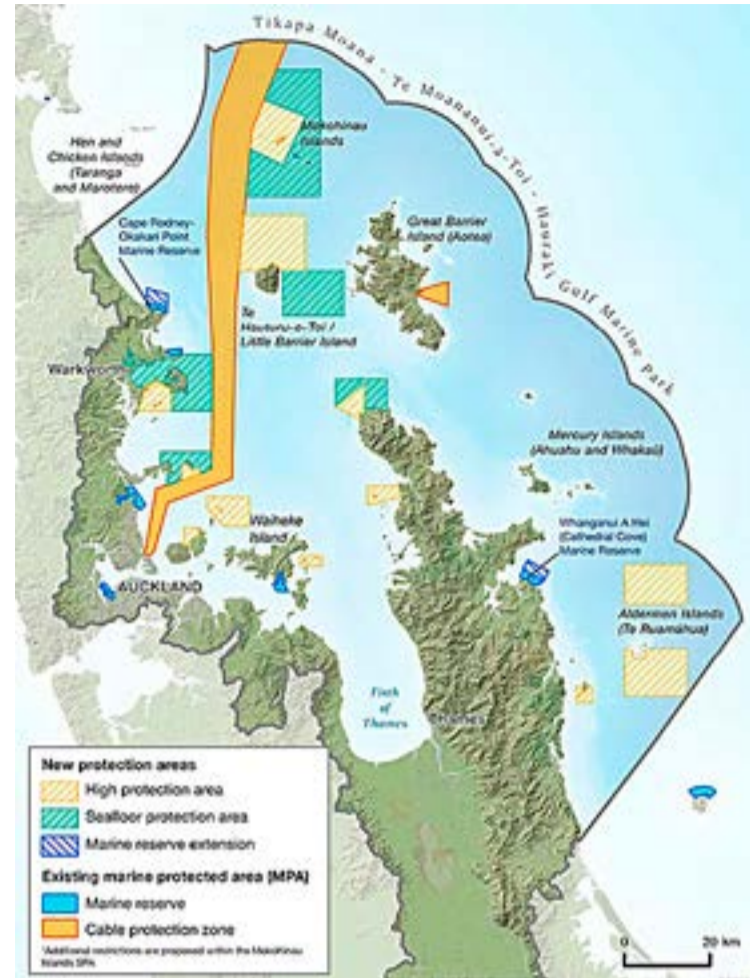
no plan to phase out destructive fishing methods. There’s no plan to restore depleted fish species, and the obligation to provide for the needs of future generations is completely ignored,” LegaSea project lead Sam Woolford said.

“How can the government propose a transformation plan that doesn’t even ban bottom trawling, dredging and seining from inshore waters? There’s widespread public support for real action, and the first step is a time-bound plan to restore fish numbers so that more selective fishing techniques can be used.”

New Zealand Sport Fishing Council president Ian Steele said the government and commercial fishing interests had failed to acknowledge the ongoing damage to both the marine environment and their reputation.

“The once-abundant scallop fishery from Northland to the Bay of Plenty is completely closed, jobs and businesses have been lost. The ongoing use of the Victorian Box Dredge has contributed to the collapse of the marine environment that supported scallop growth,” Mr Steele said.

“The government’s plan is far from transformational.”



New marine protection areas proposed for the Hauraki Gulf. Image: DOC

No 1 IN LOCAL NEWS

The Valley Profile:
up to 28 local stories per issue

A competitor:
only 0-3 local stories per issue

Support your locally-owned and operated community newspaper - call Nikki today to place your CLASSIFIEDS, adverts and advertorials

022 130 3885

nikki@valleyprofile.co.nz

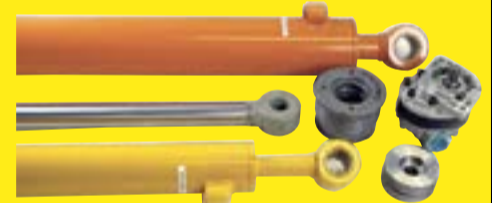


Hydraulink
Thames

24/7
MOBILE
SERVICE

We do Ram Repairs and Servicing

- Hydraulic hose & fittings
- Breakdown services 24/7
- Industrial hoses
- Lubricants & Oils
- Ram repairs & servicing
- General Engineering



Ph 07 868 5435

0274 990 924



14C Kopu Road

Kopu, Thames

Best under pressure

Bundle up your pets' key veterinary care for less hassle and more joy!

Joining fee + \$35 PER MONTH 

Joining fee + \$35 

Joining fee + \$17 

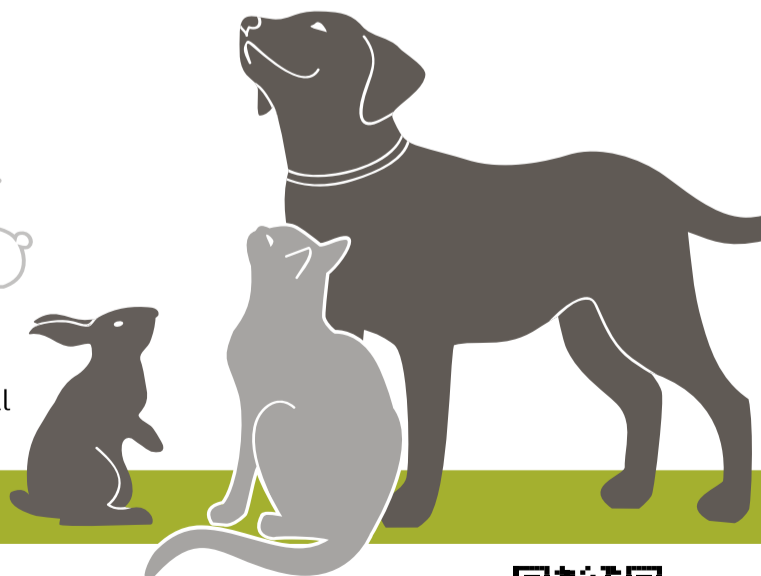
Enrol your pet in Bundle, a budget friendly option to manage your pet's primary veterinary care. Enjoy peace of mind knowing your pet's vet consults, an annual health check and routine vaccinations are covered as well as discounts off dentals, surgery, petfood and flea and worm treatments.

Enrol in Anexa's BUNDLE Pet Plan - Less hassle, more joy!



Call into an Anexa Clinic to find out more

- Thames 623 Pollen St, 07 868 7005
- Ngatea 49 Orchard Rd, 07 867 7256
- Te Kauwhata 22 Main Rd, 07 826 3581
- Maramarua 515 Ferndale Rd, 09 232 5891
- Paeroa 39 Belmont Rd, 07 862 8815
- Te Aroha 60 Rewi St, 07 884 8014



BUNDLE
less hassle, more joy



anexa.co.nz/bundle

Council to engage iwi over Māori wards

By KELLEY TANTAU, Public Interest Journalism funded by NZ On Air

Thames-Coromandel District Council has until November this year to decide whether it wants to introduce Māori wards.

But first, elected members and staff will engage with local iwi to understand their views and preferences.

Māori wards allow voters on the Māori role to elect a representative to their local council.

They sit alongside general wards and, according to Vote NZ, there were eight councils within the Waikato that had Māori wards or constituencies in the 2022 elections.

These included: Waikato Regional, Hamilton City, Mata-mata-Piako, Ōtorohanga, Ruapehu, Taupō, Waikato District and Waipā councils.

If Thames-Coromandel District Council voted to introduce Māori wards, it could see the number of its general ward councillors reduced from nine to eight. The ninth seat around the council table would instead be made up of a Māori ward

representative.

However, a subsequent representation review will be used to determine how many councillors council deemed appropriate for the district, and whether community boards, for example, were “retained, changed, altered, disestablished”.

“I personally don’t feel comfortable making this decision as a council without having a discussion [with iwi],” Mayor Len Salt said at the August 8 meeting.

He and elected members were told by staff that before November 23, councillors needed to make a “decision required in principle - yes or no” whether to introduce Māori wards.

The council’s full public meeting, on October 31, is set to make the decision.

If council decides to introduce Māori wards, it has until August 31, 2024, to work out “all of the details” during its representation review process.



John and new Thames Probus life member June Baigent.

Photo: ALICE PARMINTER

Probus celebrates 33 years of friendship

By ALICE PARMINTER, Public Interest Journalism funded by NZ On Air

Thames Probus Club celebrated its 33rd anniversary with a special luncheon on August 8.

Members gathered at the Thames Bowling Club to commemorate the occasion with a formal lunch and a

cake.

Probus, a Rotary-sponsored club, is a fellowship group aimed at retirees.

Current president Chris Hovell said she was “very proud” of the club for reaching 33 years.

The 50-strong club also inducted a new life member, June Baigent.

June, a former club president, joined the group in 1998.

Being offered life membership was a surprise and a privilege, and she had loved every minute of her time with the Thames Probus club, she said.



Parenting Talk by Parenting Place

Hosted by Waihi Kahui Ako

FREE

Building awesome whānau

— with Pio Terei

Has the novelty of family life worn off in your where? You need a dose of Pio's contagious enthusiasm for flourishing whānau! An interactive presentation drawing on the latest parenting research, delivered with Pio's trademark humour and relatability. Come armed with your parenting challenges and questions.

Thursday 7 September, 7pm
Waihi Memorial Hall

13 Seddon Street, Waihi Town

To book, email: Donna Beeston: donna-lsc@waihikahuiako.org
or Briar Scott: principal@east.school.nz

parentingplace.nz



Parenting Place is honoured to have much-loved television personality and proud dad Pio Terei MNZM as a pou tangata and kaikōrero within the organisation. Pio has been part of the Parenting Place whānau since 2002, presenting his Parenting with Pio show and playing a lead role in the development of the Building Awesome Whānau parenting course and presentations. Pio continues to spread the message that with aroha, we can all have an awesome whānau.



THAMES ART GALLERY

High School Art Competition & Exhibition

The Thames Society of Arts is pleased to once again sponsor an art competition for Year 11-13 students

First Prize - \$500
2nd Prize - \$350
3rd Prize \$250

+ 1 Years FREE membership to Thames Art Society

Presentation will be 2.30pm August 20th
Light refreshments will be served

Open Hours 10am to 2pm weekdays
10am to 4pm weekends
Old North School, 604 Tararu Road, Thames

Thames Centre Pharmacy

Dispensary & Healthcare Advice

Efficient convenient prescription dispensing

Open Monday to Friday
9am - 5pm
(closed 12.45pm - 1.45pm)

Thames Medical Centre
817 Rolleston Street
Thames

Ph 07 8685100 – Fax 07 2800724
pharmacist@thamescentrepharmacy.co.nz

Our team are locals supporting locals

‘Working on’ memorialising Sir Keith Park

By KELLEY TANTAU, Public Interest Journalism funded by NZ On Air

A portrait of Sir Keith Park that once hung in the former Mayor’s office has been donated to the Thames Museum in anticipation of an exhibition dedicated to the Royal Air Force officer’s many achievements.

The portrait, signed by the artist, J. A Crisp, depicts Sir Keith alongside a fighter aircraft. It was donated to Thames-Coromandel District Council by Kiwi motorsport legend Paul Fahey and hung in former Mayor Sandra Goudie’s office.

On August 10, current Mayor Len Salt handed over the painting to Thames Museum, after council was contacted by Sir Keith Park Memorial Airfield president Geoff Furkert.

“It just seems it’s more appropriate and a whole lot more people will get to see it,” Mayor Salt told *The Profile*.

“It’s part of that story, a really important story, of the history of Thames and its people, and it’s important to me personally that the story gets told.”

Thames Museum chairwoman Carolyn McKenzie said they were “honoured” to have the portrait in the museum’s care. She said an exhibition about the Royal Air Force veteran would be established some time in the future.

It would focus more on Sir Keith’s post-war service, which Geoff said was a “fantastic example” of leadership.

After World War II, Sir Keith moved to Auckland and worked



Geoff Furkert, Len Salt, and Carolyn McKenzie with the donated portrait of Sir Keith Park.

Photo: KELLEY TANTAU

in the civil aviation authority. According to Geoff, he persuaded the government to buy land in Mangere to establish the now-Auckland International Airport.

He also served as an Auckland City Councillor for three terms.

Geoff first learned of Sir Keith Park after a night at the Thames Workingmen’s Club when Sir Keith was in attendance. He and others agreed that the man - who

played a huge role in winning the Battle of Britain - should be acknowledged in New Zealand and especially in his hometown of Thames.

Geoff then became instrumental in getting the replica Hurricane fighter plane installed at the Thames Airfield, and fundraising is still underway to erect a complementary bronze statue of Sir Keith beneath it.

And on September 10, the annual Battle of Britain commemorations will return to the airfield.

“I always thought it was appalling that he wasn’t recognised in New Zealand,” Geoff said.

“I couldn’t understand that in his hometown, there was nothing here.”

When asked if he believed more people now knew of Sir Keith Park, Geoff - who next

month is heading to Malta to talk about the hero at an RAF memorial service - said: “We are working on it”.

DETAILS: Battle of Britain commemorations, Sunday, September 10 from 11am at Sir Keith Park Memorial Airfield, 395 Ngati Maru Highway, Thames.



AVAILABLE NOW

- One Bedroom Apartment, Level 3
- One Bedroom Apartment, Level 2

ENQUIRE TODAY!

STAGE 1 IS NOW COMPLETE

ENQUIRIES FOR STAGE 2 ARE WELCOME!

All apartments are within walking distance to Thames’ shops, cafes and walkways.

The perfect location to enjoy your fun-filled retirement

Our open plan, single level apartments feature covered balconies with fantastic views of the sea, Kauaeranga River and mountains.

Each unit’s elegantly finished kitchen, lounge, bedroom and bathroom offer stylish warmth and light.

All residents enjoy scenic views from each level’s shared lounges, use of the Village Community Lodge and participation in all activities and amenities at your leisure.

PHONE US

to view

by appointment

Come and experience the difference!












Richmond Villas
LIFESTYLE VILLAGE

Living the lifestyle, loving the choice...

A lifestyle village in Thames on the Coromandel



82 Richmond St, Thames
0800 868 5484
www.richmondvillas.co.nz

Inquest finds gum digger 'just plain worn out'



As part of a Valley Profile series, **MEGHAN HAWKES** explores our local history by seeking out stories of life and death in the Thames Valley

Broken down barristers, doctors, sons of English noble families, as well as those of humbler birth - hundreds of these were men scattered over New Zealand gum fields according to the Reverend Mr Brook, who had ministered to many of them.

The gum diggers were the 'submerged tenth' of the country who had taken up the employment of probing and digging for gum as a last resource.

In nearly every case, though, strong drink had brought the men down.

But it was not just the drink and it was not just gum diggers who lost hope or self-respect or their position in society.

Ageing bushmen and miners also descended into hard, lonely, sickly lives as happened with a spate of deaths at Neavesville at the turn of the

century.

When Irishman Richard Fraser, 64, a gum digger, died suddenly at Raw's Hotel, Neavesville, the news did not reach the local police until the next afternoon.

Constable McPhee journeyed to Neavesville from Thames to bring the body across to the Puriri Hotel, where an inquest found Richard's was just plain worn out, dying from "failure of the heart's action".

John Gregory, aged about 40, was last seen by John Donnovitch who lived within 100 yards of his hut.

When he later entered John Gregory's hut he found him lying on the ground dead.

He was also considered to have died from heart disease.

John was a Scotchman and like so many others he had no known relatives, although there was vague talk of a sister in Dunedin.

John Diamond, 65, a miner, was found expiring in his hut near the Neavesville hotel.

The previous evening at the hotel John had boasted to his mate Robert Ferguson about his good health and strength.

The next morning Robert was unable to rouse him. Medical assistance was out of the question so he went to the hotel for help.

Mrs Robertson, wife of the licensee, and a man returned



A typical old gum digger.

Photo: SUPPLIED

with him but John died around five minutes later.

Robert had noticed previ-

ously that John had something wrong with his throat; it affected his speech, but he saw no

doctor about it.

Constable Berry was dispatched to Neavesville with instructions to bring the body to Thames.

The journey from Neavesville to Puriri was made under considerable difficulty, the body having to be conveyed on a packhorse.

At the inquest, Dr Barclay said he'd found symptoms of kidney disease and double pneumonia, with old pleurisy of the right lung.

John had no relatives in the colony, owned no property, and earned a pittance from occasional shifts in a mine.

John Gunn, a gum digger, was found dead in the bush.

The cause of his death was more obvious.

He had been felling a tree which struck him a fatal blow.

Coroner Bruce and a policeman, after an arduous half a day's tramping, met up with John's mates.

As it was a very trying task to bring the body to Thames, the inquest was held under a pun-ga tree, the coroner using his saddle for a writing desk.

A verdict of accidental death was given and John buried under the pun-ga.

The other men were interred at Shortland cemetery, Thames, the answers to who they really may have been buried with them.

eves.co.nz

EVES



With over 4,000 properties on our books, EVES Property Management has the knowledge and experience to ensure successful results for our landlords.

evespropertymanagement.co.nz

EVES Waihi ☎ 07 863 1118

✉ waihi@eves.co.nz

EVES Realty Ltd. Licensed under the REAA 2008

EVES
Property Management

. Licensed under the REAA 2008



Hato Hone St John Thames

Friends of the Emergency Department

We are currently recruiting for our hospital volunteer programmes. Hato Hone St John volunteers provide comfort and support to patients and their whanau who are in the Emergency Department. These are not clinical positions, and no clinical care is required. Our Hospital Friends undertake a similar role in the ward, engaging with patients who benefit from someone to talk to or even assist with reading, puzzles, and the like.

We would like to increase the number of our volunteers who provide support to Hospital patients through these programmes.

To find out more about these programmes, please contact **Lesley Young at lesley.young@stjohn.org.nz or 027 632 3115**

Thames Area Committee

This volunteer committee's important role is the enabling of the local delivery of Hato Hone St John's vision for enhanced health and wellbeing for all by working with the wider internal structures to meet the needs of our local Community Health Strategy. If you have skills that you feel might assist our work with community engagement and collaboration, and understanding of local needs, then we would like to hear from you.

For more information on Area Committee work, please email: **hauraki.community@stjohn.org.nz**

St John - local people serving the needs of our community.

Colourful chaos at Netherton

Psychedelic colours spilled across Netherton School as students and teachers alike tackled an obstacle course fun run on August 8. As participants zigzagged their way over hurdles, under netting and down the slip n slide, they were pelted with vibrant handfuls of coloured powder. "Days like this are so important for our school, and it is a neat way of bringing all of our community together," principal Brook Hill said. "It was heaps of fun and the kids seemed to love it....as did the teachers...although they will never admit it." Reporter ALICE PARMINTER was there to capture the chaos.



Harlee Frater and Noah Chick tackle the slip n slide.

Photos: ALICE PARMINTER



Principal Brook Hill thwarts a powder ambush from Olly Povey.



Aimee Hill and Samantha Shaw share a joyful moment.



Rhylyn Nuth, left, and Reef Bradley consider their next move.



Kayden Drent and Ben Firth dash around the course.



It's all fun and games for Ayla Rawlins.

Mitsubishi Triton, 2015-2020
2wd, 4x4, manual, auto, choice of 6



FROM \$24,995 or finance

2015 Holden Colorado LTZ
4x4



NOW \$30,995 or finance

2018 Mercedes-Benz X-Class
4x4, auto, loaded



\$42,995 or finance

2018 Hyundai Tucson Elite
2.0L petrol, top spec



NOW \$30,995 or finance



Saunders Mitsubishi

201 Pollen St
www.saundersmitsubishi.co.nz

A/h: Warren Hurley 021 941 963 - Paul Saunders 021 220 0098

0800 11 11 10

SPORTS

Exciting opener for Foxes

HEARTLAND RUGBY

Thames Valley opened the 2023 Heartland Rugby season with an exciting 36-33 victory over Whanganui at Whanganui last Saturday.

Both teams scored five tries and four conversions with the difference being a splendid 48-metre penalty goal kicked by Thames Valley's, Fletcher Morgan.

At the seventy-minute mark, the Swamp Foxes led 29-21 but then the Butcher Boys scored a converted try and were right back in the game at one point behind.

Harry Lafituanai responded by kicking ahead, regathering the ball and scoring in the corner. Morgan converted from the sideline and with an eight-point lead, Thames Valley were able to hold for the win, even though their opponents scored a final try right on full-time.

Whanganui led 14-12 at half-time but the Swamp Foxes had shown much promise in their first half play.

Their scrums were strong, the lineouts effective and the back line defence was excellent in set plays.

It would be fair to say that every player pulled his weight and the enthusiasm of the whole team was much to be admired. These efforts enabled the Valley to take the lead early in the second half. At 19-21 they



Thames Valley's goal kicker, Fletcher Morgan from Waihi Athletic, scored 21 points in his debut against Whanganui.

lost it briefly before Morgan's vital penalty kick, which he followed up by scoring a try.

Then came Harry Lafituanai's fine effort. This was Lafituanai's twentieth try for Thames Valley and brought up his one hundred points for the Union.

Fletcher Morgan had an excellent debut as he scored a total of 21 points from two tries, four conversions and one penalty goal. The other try scorers were Leroy Neels, Sam McCa-hon and Harry Lafituanai.

Six Heartland unions scored bonus point victories in the first round and are therefore separated by the points differentials. Thames Valley sit in fifth

place with plus three points. Their opponents at Te Aroha on Saturday are Poverty Bay who are third on the ladder, with a differential of plus 19, after their 52-33 victory over Buller.

The Thames Valley Vixens also play Poverty Bay at Te Aroha on Saturday to start their 2023 Heartland campaign.

File Photo: SUPPLIED/TVRFU



Shaun Millar plays in the sponsors team at Kerepehi Bowling Club on Sunday, August 6. A total of 17 teams played in O'Hagan Vision Care/Harvs Butchery sponsored optional 4s tournament. Prize winners were: 1st 4 Wins 26 points 23 ends (Kerepehi) Richard Crosland, Lorraine Putt, Glenda Brackenridge, Robin Povey; 2nd 3.5 Wins 19 points 18 ends (Tui Park) Steve John team; 3rd 3 Wins 33 points 24 ends (Kerepehi) Arthur Thorburn, Lois Curd, Maisie, Fatu Tausi; 4th 3 Wins 19 points 15 ends (Kerepehi) Wally, Micheal Crosland, Sally Felton, Barry Felton. Lucky Prize :- Danny, Tom, Todd, John H. Coming up on Sunday, September 20: Opt 3 bowl triples (3 Dads/Harrison Family; Summer opening Sunday, September 3: opt 4s (Sutherland Family/Colin Wilson). A big thanks to all soup makers and helpers over the winter bowls period. Morning tea and lunches are back on the menu for all summer bowls, which is included in the \$12 entry. A cheap enjoyable day at Kerepehi. Good bowling,

- Terry King



2023 BUNNINGS WAREHOUSE HEARTLAND CHAMPIONSHIP



Saturday 19th August at Boyd Park, Te Aroha
Gates open at 12.00pm

12.30pm

TV Vixens v Poverty Bay

2.30pm

Thames Valley Swampfoxes VS Poverty Bay

Ticket price - \$5.00 • Under 18 years = free • No EFTPOS










Sale on Buxton leather handbags



- Cushions
- Jewellery
- Wall Art
- Handbags & Accessories
- MASKS
- MM Linen 100% cotton bedspreads
- Loyalty Cards
- Gold Card Discounts

Lynne's

500 Pollen St, Thames - 868 8725

Scott Simpson

MP for Coromandel

Contact me anytime

0800 550 330
mpcoromandel@parliament.govt.nz
scottsimpson.co.nz
scottsimpsonmp





Authorised by Scott Simpson,
614 Pollen St, Thames.

SPORTS

Email your sports results and photos to editor@valleyprofile.co.nz

Huge medal haul for Hauraki taekwondo

MARTIAL ARTS

Sixteen students from Calibre Hauraki Plains Taekwondo represented Counties-Manukau at the New Zealand National Taekwondo Tournament at the end of July.

There are approximately 100 clubs across the country so the competition was fierce, nevertheless, each of these students came away with at least one medal, and Counties-Manukau were awarded the winners of the overall region for the tournament.

The club came away with eight gold medals, four silver, and 16 bronze.

The club belongs to ITFNZ, which is the largest Martial Arts organisation in the country. Members train at the Kopuarahi Hall twice a week on Mondays and Thursdays under the instruction of Jon Sawden. RESULTS: Cayden Reed: silver medal in Power Breaking; Cooper Green: gold in Specialty; gold in Team Patterns, bronze in Sparring; Paige Tevita-Williams: gold in Patterns, gold in Specialty, gold in Team Patterns, bronze in Sparring; Melissa Garland: bronze in Patterns, bronze in Sparring; Gaurav Kung: bronze in Sparring; Keegan Garland: gold in Specialty, bronze in Spar-

ring; Lucy Hart: silver in Sparring; Sarah Garland: bronze in Sparring; Ruby Green: gold in Patterns, bronze in Sparring; William McDonald: bronze in Patterns, bronze in Sparring; Mal Tevita: bronze in Patterns, silver in Sparring; Regan Hayward: bronze in Sparring, bronze in Patterns; Rosie Hart: silver in Patterns, bronze in Sparring; MJ Tevita-Williams: gold in Sparring; Jaxon Smith: bronze in Sparring.

- Calibre Hauraki Plains Taekwondo



The Calibre Hauraki Plains Taekwondo team successfully competed at the national competition.

Photos: SUPPLIED



CoromandelApp

SCAN ME



Local news and information at your fingertips!

Download the **Coromandel App** for up-to-date local news from around the Coromandel Peninsula and Hauraki districts, plus road and weather reports, local activities, trades & services, things to do, local markets, shopping, dining, community information and much more!

The **Coromandel App** is powered by your local team at the *Valley Profile*, with our award-winning journalists providing local news you can trust

Get your business on the *Coromandel App* for a cost effective way to reach your customers with listings, banners or in-story adverts. Pricing starts from just \$10 + GST per week!

Find out more: Ph 022 130 3885, nikki@valleyprofile.co.nz

ADS FROM JUST
\$10
+ GST
PER WEEK



DOWNLOAD FREE TODAY!



The Valley Profile

Conservation Week



Re-Store offers you the chance to shop guilt-free while positively impacting the environment.
Photo: SUPPLIED

Discover a sustainable lifestyle at Re-Store

Embrace a sustainable and wholesome way of living with Re-Store Eco Market, your destination for all things eco-friendly and health-conscious.

Nestled in the heart of Thames, Re-Store is a bulk wholefoods and household refill store, that invites you to embrace a healthier, eco-conscious way of life.

At the heart of Re-Store's philosophy is the commitment to reducing waste. With a wide array of ethically and locally sourced, organic, and packaging-free products, Re-Store offers you the chance to shop guilt-free while positively impacting the environment. Each item, from pantry staples to personal care products, is carefully curated to align with your health and wellness goals, while at the same time staying in line with their eco-conscious vision.

What sets Restore apart is its dedication to sustainability. Say goodbye to single-use plastic and hello to reusable containers.

Bring your own containers to refill with items such as pantry staples, nuts, spices, and liquids - reducing packaging waste and saving you money.

Re-Store encourages you to join the plastic free movement, one shopping trip at a time.

Embrace a lifestyle that's not just good for you, but also good for the planet.

Visit their corner store at 580 Pollen St, Thames, opposite Carson's Bookshop, or take your time to explore their online store at www.re-store.co.nz.

Re-Store Eco Market - where goodness and sustainability unite.

- Supplied by Re-Store Eco Market

Protect our planet from waste

During Conservation Week we're reminded of the importance of protecting our planet from unnecessary waste.

Run by a charitable trust, the Hauraki Repair and Reuse Centre (HRRC) in Paeroa is an example of how a community-driven initiative can make a positive step towards conservation.

Pre-loved items are given a new life, keeping materials in use for longer.

This minimises the need for resource extraction and production, easing the burden on our planet.

Quality goods that need minor repairs are fixed and provided for sale to the public, but the HRRC is not just a place to find quality second hand treasures.

It also provides a collection point for TerraCycle (make-up and toiletries products), soft plastics, Tetrapak, and electronics (e-waste).

The DIY attitude is championed with regular workshops held for sewing ma-

chine servicing and repairs.

Learn how to repair or upcycle fabric and clothing in the sewing room each Saturday from 10am-1pm. Join Erin at the next workshop on Saturday, August 26 to design and make your own bunting! Bookings required.

Finding solutions for waste not currently recyclable is high on the HRRC priority list and many new initiatives for resource recovery, reuse and repair are to be launched in the coming year.

One person's trash is another's treasure, and there's plenty of treasure here.

We invite everyone to join the Hauraki Repair and Reuse Centre in a commitment to environmental preservation. Whether you donate unwanted items, shop for unique treasures, or volunteer your time, you can become an essential part of this conservation journey.

- Supplied by the Hauraki Repair and Reuse Centre



The HRRC is not just a place to find quality second hand treasures.

Photo: SUPPLIED



a locally owned & operated bulk foods and household refill store with a focus on sustainability and reducing unnecessary packaging





Stocking a huge range of products including:

- All your pantry essentials without the plastic
- Refill cleaning products & personal washes
- Sustainable personal hygiene options
- Custom made gift boxes for all occasions
- Collection of locally made goods from around the Coromandel

Bring in your own containers to re-fill or use our brown paper bags

www.re-store.co.nz

@restorewholefoods

580 Pollen Street, Thames



Why waste?

Send used items to us for a new life!

- ✓ **Building & Construction Materials** - timber, iron, renovation items like doors, hardware, windows, sinks, toilets, baths, showers, tiles, pavers, bricks, paint, flooring, lighting.
- ✓ **Furniture & Household Goods** - couches, tables, chairs, beds, drawers, electrical appliances*, bric a brac, art, home decor, music, DVDs, books, clean linen, clothing and footwear
- ✓ **Tools, Machinery & Outdoor** - gardening equipment, pots, decorations, pet gear, fishing & sporting gear.
- ✓ **Recyclables not collected at kerbside** - Scrap metals / E-Waste* / TerraCycle / Soft Plastics / Tetrapak. Charges apply for electrical items and e-waste
- ✓ **Retail / Commercial / Industrial goods** - please enquire!
- ✗ We don't accept recyclables collected at kerbside (1, 2, 5, cardboard, cans, glass) mouldy, dirty or unhygienic items, wet or unstable MDF, or unsaleable items

Open Thursday - Sunday, 10-4:30 (drop offs close at 3:30 pm)

1 Grey St, Paeroa Ph: 027 600 0445

Facebook/Instagram: @haurakirepairandreusecentre

<https://haurakirepairandreusecentre.weebly.com>

Email: hrrcmanager@gmail.com

Conservation Week

Our conservation heroes

The Coromandel values conservation. And, fortunately, we have people who love just that!

People who work hard and give their time to protect the peninsula. They're always out there: weeders, trappers, hunters, track-builders, planters, planners and DOC.

Kaitiakitanga – guardianship; nurturing, nourishing, caring for the land. Our land, having split from Australia 80 million years ago, evolved a completely new flora and fauna. In New Zealand, the only class of creature excluded is mammalia, with the exception of the little pekapeka, a short tailed bat.

Coromandel's own Archey's frog, considered a living fossil (having changed little over the past 200 million years), and the brown flightless kiwi, are both threatened by extinction. This heritage is worthy of our kaitiakitanga.

We are fortunate to have within our local communities people who do the mahi, who have a vision and get things

done. I would like to introduce three conservation heroes of mine, models of kaitiakitanga. Cliff Heraud was one such visionary. In 1999, Cliff wanted to plant 2000 kauri to celebrate the millennium. So taken were others by Cliff's vision that it blossomed; now, over 55,000 kauri are in the ground.

Then there are people who just get stuck in and do it. My father, Harman Brown, was one. He planted pohutukawa on the foreshore of Kuaotunu and helped start dune restoration work in the Wai-kato.

Local treeman John McKeowen is another. John supervised the solarpunk planting of 150 kauri to commemorate Thames 150th anniversary and 2000 or so natives at Burke St, Thames.

"Trees are wonderful. Majestic. They give us life. I have loved trees all my life. It's a way of leaving our world in a sustainable way," reflects John's conservation philosophy.

- By Deborah MacDonald Brown



John and Keenan McKeowen at the Burke St planting.
Photo: SUPPLIED

"On the last day of the world,
I would want to plant a tree."

--
W. S. MERWIN



SOLAR PUNK
AOTEAROA

Foodies

Indulging in the delights of winter warmer foods

During the chilly embrace of winter, there's nothing quite as comforting and inviting as a selection of hearty winter warmer foods.

These culinary delights possess a unique ability to thaw both body and soul. From the rich aroma of simmering soups to the indulgent embrace of a piping hot cocoa, these dishes are the embodiment of coziness.

One can't overlook the classic allure of a steaming bowl of soup.

Whether it's a creamy tomato bisque, a chunky vegetable stew, or a soul-soothing chicken noodle, soups offer a nourishing escape from the cold.

Their warmth penetrates deep within, providing both sustenance and solace.

For those seeking indulgence, winter brings forth dishes that wrap you in a blanket of

taste.

Imagine a bubbling pot pie, its golden crust giving way to a symphony of tender meats and vibrant vegetables.

And then, there's the ultimate winter dessert: hot chocolate. The velvety elixir topped with whipped cream or marshmallows is a hug in a mug.

Winter warmer foods are more than sustenance; they are an embodiment of comfort and tradition.

They invite us to gather around tables, to share stories, and to forge connections.

As the bitter cold sets in outside, these foods become our companions, reminding us that amidst the cold, there's an inner warmth to be found in every savory spoonful and decadent sip.



The hot chocolate is the ultimate winter dessert.
Photo: PIXABAY

THE PUBLIC OFFICE
CAFE | RESTAURANT

10 Orchard Road West, Ngatea
p: 07 867 7714
e: book@thepublicoffice.co.nz

Brunch
Lunch
Dinner
Catering
Events

BURTON'S LUNCH BAR & CATERING
ON WHEELS

How can we help you?
What do we cater?...Everything!

We cater from small private gatherings to large scale events.

- Weddings & Funerals
- Corporate Events
- Team Building Events

And we can cater to your needs...

- Buffet
- A La Carte
- Morning & Afternoon Teas
- High Teas and more

Contact us to plan the catering for your next event.
Kris Burton 022 380 9735
email burtonsbistro.catering@gmail.com
facebook @burtonscatering • website burtoncatering.co.nz

HISTORIC WAIKINO HOTEL

Open daily from 12pm
Family Friendly full of history offering thirst quenching beverages & homestyle soul food

"The home of Eliza's Claim Gold Gin"
Distilled on site

8541 SH2 Karangahake Gorge
Waikino
Ph: 07 863 8381 • E: info@waikinohotel.nz

CALL THE EXPERTS

ARBORIST



TREE SHAPES

Qualified Arborists

- Treework Large & Small
- Stump Grinding ➤ Hedge Trimming
- Fruit Tree Pruning ➤ Chipping

For a free quote call
07 868 3985 or 0274 726627

ARBORIST

We solve your tree problems
Tree Removal • Stump Grinding
Pruning • Clearing • Storm Clean Up
*Qualified, experienced,
fully insured*

Trusted treework for over 25 years
Call today

SHORT BACK'N'SIDES LTD

027 439 0367
shortbacknsides.co.nz



The Floor Man staff L-R: LJ, Dan, Jase, and Kezlin.

Photo: SUPPLIED

BUILDING SERVICES



PROFESSIONAL TRADE SERVICES

BUILDING | ELECTRICAL | PLUMBING

RESIDENTIAL - House Renovations - Kitchens
Bathrooms - Pergolas - Fencing - Decks
Gibbing - Tiling - Landscaping - Painting
General Home Maintenance and Much More

COMMERCIAL - Body Corporate Maintenance
Programmed Maintenance - 24/7 Emergency Callouts

CONSENTS - Required Building Consent work lodged with Councils

INSURANCE - Preferred Insurance Provider
Flood / Earthquake / Cyclone / Electrical
Plumbing Work

DESIGN - CAD Design for Extensions - 3D Room
Design (see how your job will look like when completed)

Ph 0800 088 001 (Call for a FREE Estimate) www.ptsnz.com
Office & Showroom 3 Coronation Street, Paeroa

The Floor Man hits the floor

The team at The Floor Man offer sales and installation of carpet, vinyl, laminate, polyurethane of timber and concrete floors for Hauraki-Coromandel households and businesses.

then eight years ago just before we had our second daughter decided it was time for a change," he said.

"[Clients] are quite happy with the work I do and the team usually gets good feedback," he said.

Owner Daniel Martindale established the business in Thames eight years ago prior to relocating to Ngātea, and said he always received layers of positive feedback from clients.

"[The key is] hard work, good work ethic, and just knowing the trade inside and out."

Dan said he eventually plans to establish a shop for The Floor Man within the region.

"Dad taught me 17 years ago in the Hawke's Bay and then I moved up here, finished training with a local company, and

CONTACT: email: dan@thefloorman.co.nz
ph: 021 020 47027 Facebook: Dan The Floor Man

CLEANING



CLEAN UP CREW

- Lawn mowing
- Weedeating
- Hedge & tree trim
- Section clearing
- Gardening
- Rubbish removal
- Interior house clean
- New build clean/clear
- Odd jobs considered
- One off jobs welcome

0800 464 898
Alaine Hedges
027 242 7268
John Hedges
027 457 2018
Email: info@ajcleanupcrew.co.nz

DRIVING ACADEMY

DRIVING COURSES

Driving lessons
Learner Licence courses*
Defensive Driving courses*
Book now 027 314 1577 (text or phone)
*register your interest
*see if you are eligible for free courses
admin@valleyeducation.co.nz



EARTHWORKS & CARTAGE



Digger, Bulldozer & Truck Hire

- Mulching
- Cartage of Metal, sand, fertiliser, palm kernel, hay & maize silage

PHONE TIM 027 278 5384
T & A MCWATERS LTD

ELECTRICAL INSPECTOR



INSPECTRICAL

- Caravan e-wofs
- Home and Business electrical inspections
- IQP emergency lighting inspections
- Solar power inspections

Servicing Hauraki, Coromandel and the Western Bay of Plenty
021 944 309 - ben@inspectrical.co.nz

ELECTRICIAN



INNIS ELECTRICAL

- Domestic
- Industrial
- Commercial
- New Installations
- Re-Inspections
- Electrical WOF's

027 539 5572
theinnis@xtra.co.nz
Registered Electrician & Electrical Inspector
Covering Paeroa and surrounding area

FUNERALS



Valley FUNERAL SERVICES

FUNERAL DIRECTORS

Our family serving yours — in the Hauraki & Thames Coromandel Districts

- Direct Cremation for Ngatea/Paeroa/Thames/Waihi \$2850 GST incl
- Traditional, Eco & Bespoke Funerals from \$4800
- Pre-Planning

Ph: 0800 862 6362
Des & Christine Necklen
Funeral Directors





ELECTRICIAN

- Rural & Dairy
- Commercial
- Residential
- Heat Pumps
- Industrial
- Service & Maintenance

ngatea@laserelectrical.co.nz
Laser (07) 867-7049
"Totally Dependable"

ELECTRICIAN



Cool Electric

- Electricians
- Heat Pumps
- Air Conditioning
- Security Systems

07 868 7151
cooelectric@xtra.co.nz
www.coolelectric.co.nz
22C Ngati Maru Hwy, Kopu, Thames

FLOORING

Supply & Installation for Domestic & Commercial

- Carpet • Vinyl
- Laminate • Polyurethane

Contact us for your free Measure and Quote
Phone : 021 020 47027
Email : dan@thefloorman.co.nz



GARDEN CARE SERVICES

Call the Gardener

YOUR GARDEN YOUR WAY

Garden Care Service

Hedge & Shrub Trimming

Softscapes & Small hardscape features

Call Paul (028) 4640 600
thegardenercall@gmail.com

HIRE CENTRE

THAMES HIRE CENTRE

Jellicoe Crescent, Thames

Perrin Newland

Telephone: 07 868 9350
Email: hire@thameshire.co.nz
www.thameshire.co.nz

HOME HANDYMAN AND COMMERCIAL HIRE

HOMECILL

Hunts Home Kills

For all your meat and game processing needs.

- We are dedicated to you, the customer.
- Hygienic, vacuum packed products.
- Professional facilities.
- Smoked meats are our speciality.
- 12 - 14 days hung on the bone, minimum
- Game orders over 10kg
- Premium custom orders to meet your needs

Ph: 0800 250 939 • Mob: Mike - 021 411 210
E: huntshomekill@gmail.com
W: huntshomekills.nz • Follow us on FB

MOBILE MECHANIC



mobile mechanics

We come to you...

- Servicing & repairs on all cars, trucks, campervans, machinery & small engines
- Batteries available

Phone Brian: 021 259 4779 or 876 5401
Email: robosvette@gmail.com

HOME MAINTENANCE

HOUSEWASH

SOFT-WASH the exterior of your house, roof or patios, fences & driveways.

Cleaning, moss treatment & waterblasting for 25 years.

Also clean exterior windows.

Call 0800 737 777 or
Anton direct on 027 313 4386
atlasgroup@xtra.co.nz

PAINTER



That Painter Ltd.

Residential & Light Commercial

- Interior & Exterior • Residential & Light Commercial
- Fully Insured • Workmanship Guarantee

Contact Stan on 0223137911
to discuss your project.

PLASTERER

TWINWOLF PLASTERING SERVICES

- Exterior Plastering specialist.
- 30 years experience
- All aspects of plastering including. Gib stopping, fireplaces, steps, foundations, patios, block walls and renovations.
- Specialising in exterior repairs & modern finishes.

Shannon: 022 428 2239
Twinwolfservices@gmail.com

PLUMBER



Plumbing Laser

PLUMBING • DRAINAGE • GASFITTING
GENERAL MAINTENANCE
Thames 07 868 6021
Whitianga 07 866 0070
Whangamata 07 865 7151
Waihi Beach 07 863 5621

CALL THE EXPERTS

RUBBISH REMOVAL

Smart Bins

Skip bins, Wheelie Bins, Farm Bins

Phone us or book online
0800 4 MY BIN or
www.smartbins.co.nz

SCRAP METAL

Scrappy Verns

Buyers of all scrap metal & cars
Farm clean up specialists
Top prices paid

Phone Vern • 021 621 437

SEPTIC TANK CLEANING

ALLENS UNITED

Paeroa (2015) Ltd

LIQUID WASTE
SPECIALISTS

0800 862 720 | 027 442 0067

TYRES & BATTERIES

HAURAKI TYRE and BATTERY

- Stockists of all major tyre brands
- Exide Batteries with extended warranties
- Wheel Alignments.

314 Pollen St, Thames
Ph 868 8182

WASTE REMOVAL

SKIP BIN HIRE

For Household, Business,
Building and Farm
Rubbish Disposal

Ph: 0800 754 724

Paeroa Skip Bins (2017) Ltd

WINDSCREENS

PRECISION WINDSCREENS

We come to you!

Chip Repairs - Windscreen replacements
-Insurance claims

PH: 0272127750
www.precisionwindcreens.co.nz

CLASSIFIEDS - Deadline 12pm Monday

Trades & Services

TILER

Quality workmanship.
Currently available.
Enquiries ph Rob
Ph 021 026 93064

Advertise with the
Valley Profile
Ph 022 130 3885

FENCING CONTRACTOR

Residential & Rural
Retaining walls & more
High quality
workmanship
Competitive prices
Call Matt
021 1727 148

Situations Vacant

Team Leaders – Thames

- Come live in affordable Thames - gateway to the Coromandel Coast
- Work for an experienced empowering leader
- Make a difference in people's lives.

About the role:

It's an exciting time to come and join the team at The Supported Life Style Hauraki Trust. Our welcoming environment is thriving and we now need two team leaders to each lead a team of capable Support Workers.

This includes team schedules, learning and development and empowering staff to be the best they can be when at work.

We are proud of the work we do in our community supporting Life Stylers to live as independently as possible.

This role will be responsible for ensuring Support Workers provide appropriate levels of care to achieve best outcomes.

This role will also interact with families, providing updates and answering queries as they come in.

About you:

You will have some leadership experience and genuinely love getting the best out of people. You'll have a desire to learn and grow within a supportive environment. You enjoy problem solving and take a bigger picture view to workloads and tasks. Excellent communication skills and the ability to interact with all from the community is key. You are open minded, empathetic and love dealing with people.

You must have a full driver's license and be able to clear our police and reference checking process.

What we offer:

This is a full-time position working Monday to Friday with the requirement to be on call one week in five for 7 days for out of hours emergencies (call out rates apply).

Employees of the Trust enjoy a free meal every week day, discounts at local stores, free membership at a local gym and the swimming pool. Relocation costs will be considered. Great Schools, small welcoming community, beaches, fishing and hiking all at your doorstep.

Our values are Respect, Integrity, Courage and Inclusiveness – so if you want to live and breathe these values as well as bring great outcomes to our community then we want to hear from you.

For more information or a Position Description, contact Manager of Service De King, dking@suplife.org.nz

Applications will be open until we fill both roles.



Wanted

Oversized scrap steel and large quantities of ferrous metals, top \$\$ paid on pickup, cash or credit. Onsite recycling, scrap marketing and transport services available.

Asbestos Removal

Demoworx is a certified specialist in Asbestos removal, we can take care of your asbestos removal needs in both residential and commercial properties. Please contact us for a quote for your Asbestos removal needs.

Contact

08003366967

amanda@demoworx.co.nz



Situations Vacant

PART TIME STAFF MEMBER

We require a fit and reliable person to work 4 hours every Saturday. Please send a cover letter and CV to Derrick.Wharerau@placemakers.co.nz



Qualified WOF Tech Seeking Change?

Whyteline are seeking a qualified mechanic with WOF issuing authority to join our team on a full time, permanent basis. Must have a clean NZ licence and legal right to work in New Zealand. Experience with Suzuki cars desired, but not required.

Hours are Monday – Friday, 8-5.

Email your CV to marketing@whyteline.co.nz or call Mark on 021 906 931 to learn about the role.



NEWSPRINT

Roll ends for sale
800mm wide, varying lengths, \$10 ea
Available at the Valley Profile office:
2 Queen St, Paeroa
Call first to check availability:
Ph 0204 0944 853



Perfect for school holidays - art and craft, moving, table coverings and more



CLASSIFIEDS - Deadline 12pm Monday

For Lease	Handyman	Storage	Public Notice
Yards for lease, Thames and Kopu. Suitable for trucks, vehicles or trade business base. Ph 027 440 7101	Mowing, hedges, fencing, gardening, carpentry, painting, retaining walls, welding, waterblasting. Work is good quality and I will not attempt to work outside of my skills. Insured. Dennis Schuler 022 129 0169	Thames Valley Storage – secure, dry units available, two sizes. Call Trev 027 4076966	Paeroa Society of Arts AGM 109 Normanby Rd Paeroa 23 August 2023 @ 12.30 All are welcome.
Gardening	Storage	Storage	
STUMP GRINDING. All sizes, all areas. Thames based. Ph 021 060 7659	Storage Unlimited 25 Ngati Maru Highway Kopu, Thames Clean, secure, dry Units available 7 x 3.6m and 7 x 5.5m Phone 07 868 9944	TOTAL STORAGE LTD KEREPEHI / PAEROA 10FT CON. \$125 per mnth 20FT CON. \$240 per mnth T&C's apply 021 67 67 99 info@totalstorage.co.nz	
Gardening	Storage	Public Notice	
Need stump grinding? Any size, any number, anywhere. Different machines for different applications. Over 20 years experience. Short Back n Sides Ltd We solve your stump problems. 027 439 0367	STORE 4 U Waihi. Clean, dry, alarmed. Call Curly 021 746 608.	Thames Business Association Notice of Annual General Meeting Wednesday 6th September at 5:30pm at Gastronomics Function Room, Thames For information on Nominations to the Board, phone TBA: 022 466 1031 or email: manager@thamesbusiness.co.nz	
Grazing Wanted	Storage	Trades & Services	
Long term 10 acres minimum between Paeroa and Thames. Ph Steve 0220 75 62 11	STORAGE KOPU, PAEROA TE AWAMUTU "New Units" Ph 027 440 7101 07 868 3033 Safe n Sound Storage www.safestorage.co.nz	Eazy-Blast Household Water Blasting Slippery steps, patios, pathways & driveways can be very dangerous. I specialise in small local jobs at reasonable prices. Contact CHRIS for a FREE local quote 021 0852 1825	
Handyman Services	Handyman Services		
THAMES HANDYMAN & BUILDING SERVICES Building, home maintenance & general gardening services Phone: Fleur or Crighton • 0273 913 283			

CLASSIFIEDS - Deadline 12pm Monday

Situations Vacant

Qualified Mechanic Wanted
 Immediate start.
 Email: miles@hpmotors.co.nz
 or phone
027 227 1121



**TRANSPORTATION
 MANAGER AND TRANSPORT
 TEAM LEADER**

Here is an excellent opportunity to take the next step in your career in local government.

Hauraki District Council have two leadership roles within the transportation team available. The successful applicants will need to demonstrate a high level of expertise in all phases of the job and form opinions and conclusions which are technically sound and well founded and have an ability to communicate effectively with a range of individuals and groups. Combine that with a working knowledge in civil engineering, engineering design, project management and Te Tiriti o Waitangi. A BE or Registered Engineer qualification plus substantial experience in Transport engineering and contract management is required.

More information and position descriptions are available on the Hauraki District Council Website.

To view the full job role, visit:
<https://haurakidc.recruitment.co.nz/Vacancies>

"At Hauraki District Council ... it's more than just a job!"

Public Notice



Notification of intention to conduct spraying within Hauraki District local road reserve areas

The Hauraki District Council road maintenance contractor (Ventia Ltd) will conduct a spraying programme within Hauraki District road reserve areas to control vegetation within surface water channels and side drains and around road features such as sign posts and roadside marker posts.

The operational area will include the entire Hauraki District local road network, excluding state highways, with spraying activity programmed to commence at the end of August 2023 to June 2024.

Agrichemicals to be used are:

- Glyphosate 360
- Meturon

If you would like your property frontage to be excluded, you may apply online via <https://www.hauraki-dc.govt.nz/roads/no-spray-zone-register> or call into any of the Hauraki District Council Service Centres.

For enquiries relating to the operation please contact Ventia via email at hdcroadmaintenance@ventia.com.

We thank you for your patience during these road improvement works.

L D Cavers
 Chief Executive
 Hauraki District Council

www.hauraki-dc.govt.nz

SPORTS

Secondary school champions

The 2023 New World Waihi Thames Valley Secondary School rugby finals day was held at Whangamatā Rugby Club on Saturday. RESULTS: Youth Boys Plate Champions - Whangamatā Area School; Youth Boys Champions - Hauraki Plains College; Girls First XV Champions - Hauraki Plains College; Boys First XV Champions - Mercury Bay Area School.

Photos: SUPPLIED/TVRFU



Mercury Bay are named the First XV Coultter Cup Champions.



Hauraki Plains College won the girls' First XV championship.



Hauraki Plains College take home the Bob Passey Cup in the youth boys championship.



The L Berry Cup goes to Whangamatā youth boys.

DRIVING ACADEMY



Call us to see if you are eligible for our FREE 3 day Learners Course.

Driving lessons and help to move you from learners restricted to a full licence are available.

Don't let a lack of a driver's licence make you miss out on that job.

To book now call or text 027 314 1577

Level 3 Agriculture spaces available now.

Level 3 Horticulture spaces available now



Valley Education
free courses • free transport

Call or **07 868 7892**
 text us **027 314 1577**

www.valleyeducation.co.nz

ADVANTAGE
THE TYRE PROFESSIONALS

Two Locations

Kopu Tyre Services
Main Road, Kopu, THAMES
Ph: 07 868-9660
Emergency Service: 0274 976 356

Valley Tyre Services
Cnr Station & Tawa Rds PAEROA
Ph: 07 862-7767

◆ Wheel Alignment Services
◆ ATV Tyres

◆ Alloy and Chrome Performance Mag Wheels
◆ 1 Hour Puncture Repairs
◆ 24 Hour Callout Service

www.advantagetyres.com

THAMES VALLEY TANGATA ORA TRUST

The People's Wellbeing Trust
Total Mobility Scheme assessors

MOBILITY EQUIPMENT
SALES & SERVICE

DAILY LIVING AIDS
HIRE & SALES



- Mobility Scooters
- Wheelchairs
- Walkers
- Daily Living Products - Reachers, SockAids, Walking Sticks and more
- Electric Lift Chairs
- Bathroom and Toilet Aids
- Continence Products
- We will also do our best to source other products on request

607 Mackay St, Thames (Opposite the hospital) • Ph: 07 868 7723 or 027 383 1117 • E: tvtot2017@gmail.com
Opening Hours: Monday to Thursday 10am - 3pm, Friday 10am - 1pm - After hours by arrangement

SUDOKU

113

Fill the grid so every row, every column and every 3x3 box contains the numbers 1-9

		1		3	2			5
3	8			9				
		2	7		6	9		8
	2			5	7		4	9
4			2	6	1			5
1	7		4	8				2
2		9	6		3	8		
				2			7	3
	3		1	4		5		

EASY

				9	4			
6							1	
		8	1					6
	4	6	8			1		5
	8						2	
3		1			2	8	7	
8					6	7		
	7							2
		9		7				

MEDIUM

	7				8		2	
				3			4	5
			5			6		9
2					9			
8	6		3		2		9	4
			7					1
9		8			5			
5	1			9				
	3		2				5	

HARD

113

HARD

4	7	5	9	6	8	1	1	2	3
6	2	9	1	3	7	8	4	5	
1	8	3	5	2	4	6	7	9	
2	5	1	4	8	9	7	3	6	
8	6	7	3	1	2	5	9	4	
3	9	4	7	5	6	2	8	1	
9	4	8	6	7	5	3	1	2	
5	1	2	8	9	3	4	6	7	
7	3	6	2	4	1	9	5	8	

MEDIUM

5	1	2	6	9	8	4	3	7	
6	9	4	7	5	3	2	1	8	
7	3	8	1	2	4	9	5	6	
2	4	6	8	3	7	1	9	5	
9	8	7	5	4	1	6	2	3	
3	5	1	9	6	2	8	7	4	
8	2	5	3	1	6	7	4	9	
1	7	3	4	8	9	5	6	2	
4	6	9	2	7	5	3	8	1	

EASY

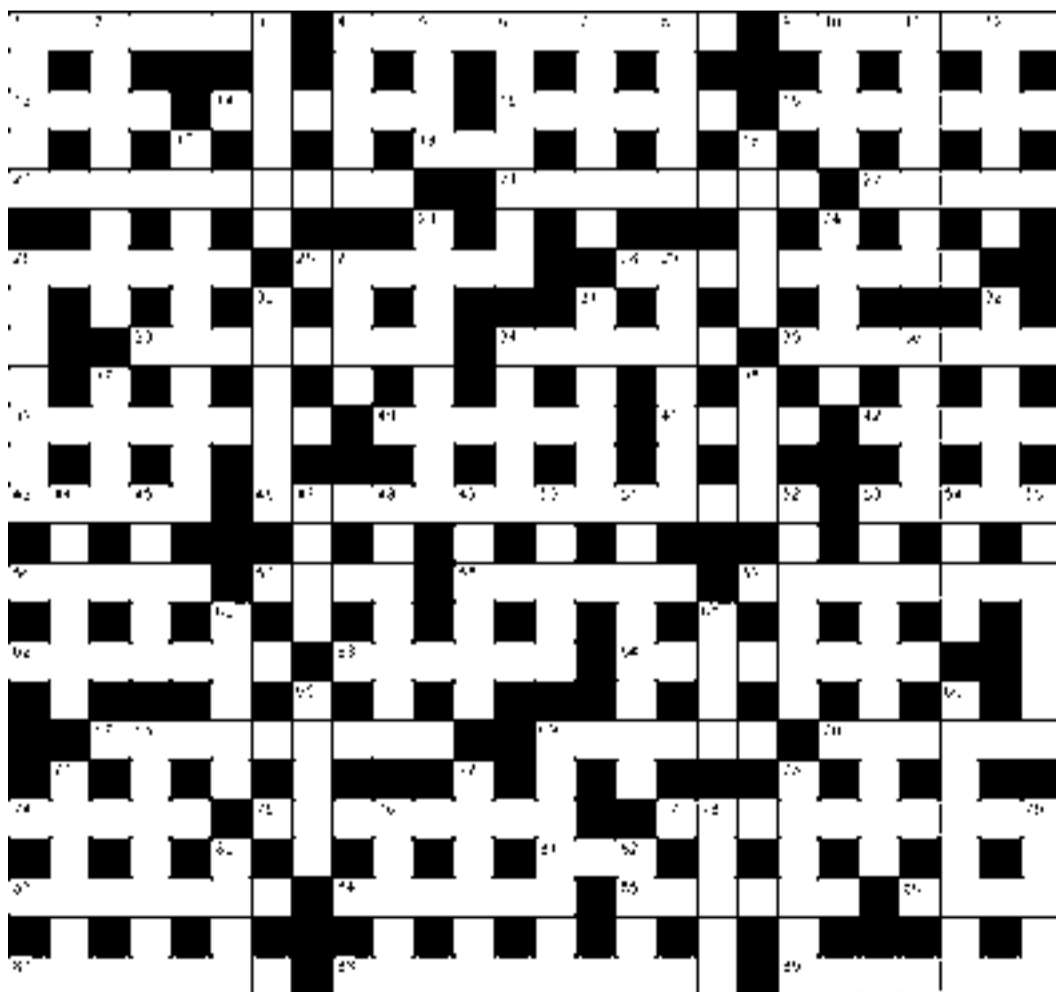
9	6	1	8	3	2	4	5	7	
3	8	7	5	9	4	2	6	1	
5	4	2	7	1	6	9	3	8	
6	2	8	3	5	7	1	4	9	
4	9	3	2	6	1	7	8	5	
1	7	5	4	8	9	3	2	6	
2	5	9	6	7	3	8	1	4	
8	1	4	9	2	5	6	7	3	
7	3	6	1	4	8	5	9	2	

Puzzles © The Puzzle Company
www.thepuzzlecompany.co.nz

JUMBO CROSSWORD

133

- ACROSS**
- 1 Inquisitive (7)
 - 4 Energy, initiative (3-2-3-2)
 - 9 Feeling of mild sickness (7)
 - 13 Requiring little effort (4)
 - 14 Cloth with crisscross pattern (6)
 - 15 Stinging plant (6)
 - 16 Spicy, not sweet (7)
 - 18 Affirmative response (3)
 - 20 Self-employed detective (7,3)
 - 21 Water (8)
 - 22 Circumference (5)
 - 25 Modernise (6)
 - 26 Chant (6)
 - 28 Spot on (4,5)
 - 33 U-turn (8)
 - 34 Die (6)
 - 35 Desiring (7)
 - 39 Scare (8)
 - 40 Growing shoot (6)
 - 41 Decisive defeat (4)
 - 42 Provide food and drink (5)
 - 43 Discard (5)
 - 46 Complete any unsettled details (3,2,5,4)
 - 53 Confused skirmish (5)
 - 56 Characteristic (5)
 - 57 Spots (4)
 - 58 Went quickly (6)
 - 59 Companion in fun, recreation (8)
 - 62 Candidate (7)
 - 63 Flaw (6)
 - 64 Ill will (8)
 - 67 Moist cars (anag)(9)
 - 69 Slender and elegant (6)
 - 70 Wheedle (6)
 - 74 Proportion (5)
 - 75 Finished (8)
 - 77 Nod off (4,6)
 - 81 Writing instrument (3)
 - 83 Inflatable rubber bag (7)
 - 84 Sturdy (6)
 - 85 Skilful (6)
 - 86 Deep voice (4)
 - 87 Fate (7)
 - 88 Comfortably off (4-6)
 - 89 Large beams (7)
- DOWN**
- 1 Inexpensive (5)
 - 2 Discerns (anag)(8)
 - 3 Climbed (6)
 - 4 Manage (3,2)
 - 5 Microscopic (4)
 - 6 Deep in thought (7)
 - 7 Character, disposition (6)
 - 8 Russian labour camp (5)
 - 10 Slightly open (4)
 - 11 Do away with (7)
 - 12 Layers (6)
 - 17 Naval vessel (10)
 - 19 Announce (5)
 - 23 Sweet on a stick (8)
 - 24 Competitor (5)
 - 25 Elevates morally or spiritually (7)
 - 27 Front part (4)
 - 29 Sudden increase (7)
 - 30 Spurn (6)
 - 31 Corresponds (6)
 - 32 Explosive exhalation (6)
 - 34 Snapshot (5)
 - 36 Vestige (5)
 - 37 Jetty (4)
 - 38 Money reserve (4)
 - 44 Police line (6)
 - 45 Defence of being elsewhere (5)
 - 47 Hankering (4)
 - 48 Futile (7)
 - 49 Accounts book (6)
 - 50 Beginning (5)
 - 51 Raised (8)
 - 52 Grave, serious (6)
 - 53 Salad dressing (10)
 - 54 Go first (4)
 - 55 Visually offensive thing (7)
 - 60 Very strange (5)
 - 61 Court document (4)
 - 65 Newspaper exclusive (5)
 - 66 Put up with (8)
 - 68 Small long-handled pot (7)
 - 69 Sovereign's staff (7)
 - 71 False front (6)
 - 72 Work that continues a previously related story (6)
 - 73 Airborne (6)
 - 76 Lying face downwards (5)
 - 78 Pungent (5)
 - 79 Sits for (5)
 - 80 Connect (4)
 - 82 Steel pin (4)



PREVIOUS SOLUTION

ACROSS: 1 Put the knife in, 8 Chance, 14 Swami, 15 Newcomer, 16 Instant, 17 Alone, 18 Ban, 19 Pulsate, 21 Attempted, 22 Leeway, 25 Close shave, 27 Tricycle, 28 Detour, 31 Brunei, 33 Garnish, 34 Sinker, 35 Miss, 37 Opt, 39 Bali, 40 Oatmeal, 41 Turquoise, 42 Endless, 43 Employer, 48 Shrapnel, 52 Saviour, 56 Tit for tat, 57 Erratic, 58 Ague, 59 Dot, 60 Area, 61 Trudge, 62 Scoffer, 63 Prefer, 65 Mutual, 66 Subtract, 68 Skateboard, 71 Quiche, 72 Verdigris, 74 Stratum, 76 Emu, 79 Niche, 80 Contain, 81 Eyesight, 83 Truss, 84 Astute, 85 Spill the beans.

DOWN: 2 Unequal, 3 Tacks, 4 Elm, 5 Norm, 6 Faint-hearted, 7 Issue, 8 Cutlery, 9 Away, 10 Cloned, 11 Tabby, 12 Pioneer, 13 Harpsichord, 14 Seaweed, 20 Testimony, 23 Daughter, 24 Planets, 26 Sundial, 27 Trifle, 29 Opinion, 30 Hearth, 32 Realm, 34 Strew, 36 Shell, 38 Puma, 43 Extra, 44 Patient, 45 Oboe, 46 Entire, 47 Evade, 48 Saturday, 49 Recipient, 50 Placebo, 51 Exude, 52 Stadium, 53 Outstanding, 54 Revolt, 55 Professional, 64 Rations, 65 Memento, 67 Treacle, 69 Roughen, 70 Chocks, 71 Queue, 73 Grasp, 75 Agile, 77 Menu, 78 Went, 82 Ewe.

SPORTS

‘Legend’ still walking the green at 92

By ALICE PARMINTER, Public Interest Journalism funded by NZ On Air

It wasn't the game that drew Neville Wiseman to the bowling green 26 years ago.

It wasn't the game that made him stay either - it was the people.

Now, the 92-year-old has taken on the role of club president for the group he said had been like family.

"I wouldn't be playing bowls if it wasn't for the members, it's as easy as that," he said of the club.

"It's a funny thing but over a long length of time all your old friends aren't with you any longer, but if you keep your eye open you'll actually [find new ones]."

It's Neville's second stint as president, after a three-year run from 2007-2010. He's always been there though, helping in the background, which has earned him the nickname "the legend".

"He's such a gentleman. Never a bad word about anyone, very well-respected," club member Lyn Brooks said.

"He goes down there and mans the little shed. He's always there, you never have to ask him. I don't think anyone's ever said a bad word about Neville."

The Waihi resident was originally dragged along to the Waihi Beach Bowling Club by a cajoling neighbour to see what it was



Waihi Beach Bowling Club president Neville Wiseman says it's the people who have kept him interested in the club.



Photos: SUPPLIED

all about.

"I had a serious back injury. I'd been a truckie prior to that, 40 years, and I couldn't drive any more. So we went to live at Waihi Beach while I was still recovering," Neville said.

"[The neighbour] would say, 'When are you coming to play bowls, Neville?' And I'd have to say, 'When I get old'."

Once there though, Neville found he wanted to stay. Besides helping to keep the place go-

ing, he's enjoyed the game itself over the years and has even had a number of successes in tournaments. The most recent was 2021, when Neville and club-mates Devon Brooks and Terry Scelly took out the competition to be named the Thames Valley Champ of Champs in the triples event.

"I haven't stopped smiling yet," Neville said.

"I was fortunate that they asked me, otherwise I wouldn't

have been there. That was brave of them to ask me in the first place."

His favourite event though is the pairs.

"Pairs are great. You get your right partner and you have a fun day, win, lose or draw. More of one than the other usually," he said.

"But when you're playing out of your own club, through the valley, you do meet some great people."

"[It's a] good sport for camaraderieship," Lyn agreed.

Neville said he plans to hold on to those friends he's made.

"I'm a life member so I'm there forever, they're stuck with me," Neville said.

"I will go out there every day I can go out, until the time comes when I can't. [But] now it's all the club, really."



WHYTELINE

You buy. We pay!



SAVE UP TO \$1,207

For a limited time, when you buy a new Suzuki Swift Sport, Vitara Turbo or S-Cross, we'll pay the Clean Car fee!*

Plus, with No Deposit 6.9% p.a. Finance it's even easier to drive away today in a new Suzuki.†

So, what are you waiting for? It's time to clean up with this special deal, available now.

*Clean Car Fee' offer applies to all new Suzuki Swift Sport, Vitara Turbo and S-Cross vehicles registered between 1-31 August 2023. The Clean Car Fee that applies to the vehicle will be paid for by Suzuki New Zealand at the time of registration. †Finance payments are based on nil deposit, 6.9% p.a. fixed interest rate, 5 year term, \$10.35 PPSR fee, \$130 UDC loan fee and \$200 dealer origination fee. On-road costs are payable to the Dealer. Suzuki Finance is provided by UDC Finance Limited. Lending criteria, fees and standard terms and conditions apply. These offers are available 1-31 August 2023 and exclude Jimmy, fleet purchases, demo vehicles and all other promotions. www.suzuki.co.nz



WHYTELINE.CO.NZ | 39 PUKE ROAD, PAEROA | 07 862 8783

HAURAKI'S HOME OF SUZUKI