

The Valley Profile



Coromandel 'may not cope', P3

GET LOCAL NEWS AS IT HAPPENS - DOWNLOAD THE COROMANDEL APP FROM YOUR APP STORE TODAY!

ADVERTISEMENT

TEBO Chair™

You've Seen It On TV Try It For Free

Exclusive Roadshow Only Offers*

**THIS
WEEK
3 DAYS
ONLY**

TEBO Chair™
Luxurious Robotic Hands

- New Tebo Aura 4D Massage
- Intelligent Bio-Mapping
- Shiatsu, Swedish & Thai Foot Massage



Thames War Memorial Civic Centre 200 Mary Street, Thames, 3500 Friday 3 February - Sunday 5 February - 10am - 5pm



Need A Massage?

Brand Developers are coming back to open a three day pop-up shop in the Thames War Memorial Civic Centre this Friday to Sunday only.

Spokesman Burt Turner says why should you have to travel all the way into Auckland to try the Tebo Aura Massage Chair. We are coming to you so you can find out about Tebo Massage Chairs and the Perfect Fit Adjustable Bed, (which also happens to give an amazing full body massage!)

"Customers outside of Auckland often don't get to see these amazing products first hand."

"Massage chairs are an investment in your health and the last thing you want to do is invest in any old poor quality chair," he said.

"The Tebo Aura Massage Chair is the next generation in Massage Chairs that puts you in control to ensure you can focus on the areas you need."

Burt himself comes from a background of farming and says he understands the importance of keeping the body well. "If I ask most Kiwis what their biggest asset is most will list the house or property. But in reality, without a doubt, it's your body first and foremost. Your health is your wealth and without that all the land, machinery and toys don't add up to much if you can't enjoy them."

The Tebo Massage Chair has its history rooted in Asian culture and Eastern Medicine. "Every second

home in Korea has a massage chair. That's because they don't have ACC" he quips.

"It's regarded as an essential health investment in those countries."

"Look the reality is people can seldom afford to pay for the benefits of a massage as often as they actually need one – which for people in acute pain or with chronic conditions is at least twice a week."

"What our customers love about owning a Tebo is that they can use it when they want, as often as they want, right in the comfort of your own home."

"And any professional masseuses I've had try the Tebo will tell you it's the real deal and hits all the spots you could hope to get to in any massage session and more."

The online verified reviews rave about the Tebo with Gillian S saying "One massage and I was hooked. One massage hubby was hooked. Great any time of day."

Burt says not all chairs are born equal though and in his view Tebo Aura Massage Chair encapsulates the best that any massage chair today can offer.

"The new Tebo Aura has 4D technology so it manipulates like a human hand. It works your shoulders, your back, your glutes, your legs – and its heaven on those aching calves and feet."

He says the air pressure massagers, coupled with the infrared heating, (which aids blood circulation

and pain relief) is aided by negative ions which can assist the cardiovascular system.

With the latest technology the Tebo Aura puts you in control where you can adjust every aspect of the massage and you can target exactly where you need it most.

This is a next generation chair with the latest programming innovations, and along with Zero Gravity it also has the zero space feature which means it takes up way less space than chairs of the past.

"And it has a fantastic sound system", he said.

The Tebo is very easy to operate and this is where the sales and service both before and after comes into its own.

"Every new client can phone in if they want and one of our team will guide them through every aspect - while in the same chair in our offices," he says.

"It's been a real selling point for us that we give our clients a strong point of contact if they want to know anything, or need any help." Burt says. You can try for yourself this Friday to Sunday at the Thames War Memorial Civic Centre.



★★★★★ Gillian S. | Verified Buyer
 "One massage and I was hooked.
 One massage hubby was hooked.
 Great any time of day."

3 Days Only Thames War Memorial Civic Centre | 3 - 5 February

Carson's
BOOKSHOP 1966



Read Play Give

600 Pollen St. Thames
www.carsonsbkshop.co.nz

The Valley Profile

HIGHWAY DESTROYED



A large section of SH25A Kōpū Hikuaī Rd has been destroyed by ongoing rain. The road has collapsed further since this photo was taken on Saturday.

Photo: WAKA KOTAHI NZTA

A large slip has taken out the Kōpū-Hikuaī Rd, and it could be months before it reopens. ALICE PARMINTER reports

Heavy rain caused chaos on the Coromandel Peninsula's road system over Auckland Anniversary weekend.

On State Highway 25A, an entire section of road collapsed near the summit between Kōpū and Hikuaī. The road had already been reduced to a single lane during daytime hours for the previous week, due to the appearance of surface cracks on the road.

Geotechnical teams had been assessing the damage, but worsening rain

forced the road to close completely on Friday afternoon. A significant portion gave way over the weekend, leaving guard railings dangling in mid air above the crevasse.

Thames Coromandel District Mayor Len Salt told *The Profile* the road was in serious condition.

"They're going to be struggling to rebuild the road in the same site because the substructure underneath that road down to a depth of about 25 metres is

not stable," he said.

Coromandel MP Scott Simpson agreed, saying the repair was going to be a big job for Waka Kotahi New Zealand Transport Agency.

"I think we're looking at months rather than weeks.

"[It] really just highlights the need for some serious investment in our roading infrastructure to make sure that we do have access to parts of the Coromandel Peninsula when events like this happen."

Mayor Salt and Mr Simpson both stressed the need for a more resilient road system on the peninsula.

"When the region is completely cut off there are obvious concerns about people's health and safety," Mr Simpson said.

"I'm always concerned about what happens if there's a medical emergency and how people are coping; particularly those that live alone, that are elderly or

CONTINUED, P3

We all know the drill...

RED is a NO



GREEN is a GO



Phone us today

0800 4 MY BIN (0800 469 246)

www.smartenvironmental.co.nz



CONTACT US

The *Valley Profile* is delivered weekly to Hauraki Plains, Paeroa, Waihi, Thames, Thames Coast and surrounds, plus bulk distribution peninsula-wide. Our focus is 100% local community content.

'The paper people read'
NEWS/EDITORIAL

Publisher/Editor Teresa Ramsey
Ph 0204 0944 853
editor@valleyprofile.co.nz
Senior Reporter Kelley Tantau
Ph 022 619 4889
kelley@valleyprofile.co.nz
Reporter Gordon Preece
Ph 022 174 3988
gordon@valleyprofile.co.nz

ADVERTISING
Ad manager Nikki Sanders
Ph 022 1303 885
Email: nikki@valleyprofile.co.nz
MISSED PAPERS/ADMIN
Ph 021 100 8709
Email: admin@valleyprofile.co.nz

2 QUEEN ST, PAEROA
Ph 07 862 7077
www.valleyprofile.co.nz
ISSN 2703-5700



Hi, my name is Pete the Pukeko and I'm here to help you. Find me in one of the display advertisements in *The Valley Profile*, then email admin@valleyprofile.co.nz with your full name and postal address, and the business name and page number of the ad by the following Monday to go in the draw to win a Lotto ticket. Last issue it was in the Ngatea Milking ad.

Council paying to fix faults on private property

By **KELLEY TANTAU**, Public Interest Journalism funded by NZ On Air

Kerepēhi homeowners sitting atop faulty wastewater infrastructure won't have to pay to fix the problems themselves.

Instead of waiting for the affected residents to obtain building consents and fork out the funds, Hauraki District Council has decided to "take full initiative" and pay \$35,000 to remedy the faults - resulting in a one-off \$4.24 cost for rate-payers.

At its meeting on January 25, councillors heard that the Kaikahu Domain wastewater pumpstation in Kerepēhi suffered from significant inflow from stormwater and became "overwhelmed" during storm events.

The risk of having the wastewater overflow into a nearby stream meant that rain events had become an "all hands on deck" situation.

According to a report, during the past year, council had to rely on sucker-trucks to prevent overflow.

Two of these trucks had to run through the night to keep the water-level under control.

The last three rain events

where trucks were on site cost council \$21,000. An investigation into the problem commenced, and smoke testing was undertaken in the catchment to identify issues.

The survey found 15 faults on 11 properties, nine of which

"We're a council here... if something happens and we have this wastewater pouring over the street, how are we gonna look?"

- Stephen Croymans

were private, and included problems such as roof down pipes that fed into gully-traps, mostly on Kaikahu Rd and Rakino Dr.

While council could decide to serve the property owners a notice to rectify the problems, the area was considered one of the older parts of the town with long-term owners, some of whom were among the older demographic and could be unlikely to afford to carry out the works without causing some

degree of financial hardship.

"My concern is the precedent that this sets. Is it for us to determine whether someone can or cannot afford to do that sort of remedial work?" Plains councillor Neil Gray asked.

Fellow Plains councillor Stephen Croymans added: "We're a council here... if something happens and we have this wastewater pouring over the street, how are we gonna look? We've got to fix it."

"I agree with what Neil's saying, but the longer we delay it, we risk something going wrong, and we're pretty close to the line, it seems to me."

Councillors voted to take full initiative for the preparation and application of bulk building consents followed by a single, larger scale construction project.

According to the report, though there was the risk of council being seen to set an unacceptable precedent in financing private works, it was clear that any time-delay associated with "convincing or compelling" individual owners to do it themselves, would result in "real financial costs" of between \$15,000 to \$25,000 per year.



Death, drownings

A death in a Coroglen river on January 19 is the latest incident in a number of water-related fatalities in the Coromandel this year.

Cameron Cumming, 19, was taking a toilet break at 2.44am when he slipped and fell down a cliff, banging his head and landing in the Waiwawa River.

The incident comes after a number of other water-related deaths in the area.

On January 17, an elderly man was swept out to sea and drowned while swimming in the Whangamatā estuary.

This was followed by a mass rescue mission and two deaths at Opoutere Beach on January 18, when a family of seven was carried out to sea in rough conditions.

Ian Cruickshank died at the scene. The body of his son, 15-year-old Samuel Cruickshank, was found near Slipper Island Whakahau three days later.

Meanwhile, a sudden death was reported in Paeroa on January 22, with a member of the public alerting police to the discovery of a body in a van near the toilet block on Marshall St.

Police are not seeking anyone in regards to this incident and say that the death is not being treated as suspicious.

For total protection in any weather, year after year, turn to Wattyl Solagard. Wattyl Solagard has been providing exterior paint protection for decades, ensuring New Zealand homes look better for longer.



Available now at Read Bros Hardware, Thames.

READ BROS.
EST. 1867
Hardware

"See us for a range of exterior and interior paints, brushes and painting accessories".

SEE MORE AT
www.readbros.co.nz
308 Pollen St, Thames
07 868 6608

Chartered Accountants

The Hauraki Taxation Service Limited

- For out of town independent accounting advice
- Established 1982
- Approved agents for Inland Revenue Department
- Offices in Thames & Coromandel Town



328 Pollen Street, Thames
Ph/Fax: 07 868-9710

E: thames@haurakitaxation.co.nz

95 Kapanga Rd, Coromandel
Ph/Fax: 07 866-8660

E: coro@haurakitaxation.co.nz

Thames Tides

Wed Feb 1	Thu Feb 2	Fri Feb 3	Sat Feb 4	Sun Feb 5	Mon Feb 6	Tue Feb 7
 Morning: 4:39am 2.9, 10:52am 1.1 Afternoon: 4:56pm 2.9, 11:12pm 0.9 Sunrise: 6:32am, Sunset: 8:30pm Best At: 9:42am, 10:07pm Moon: Set 2:02am, Rise 5:28pm	 Morning: 5:41am 2.9, 11:49am 1.1 Afternoon: 5:55pm 2.9 Sunrise: 6:33am, Sunset: 8:29pm Best At: 10:33am, 10:59pm Moon: Set 2:46am, Rise 6:23pm	 Morning: 12:11am 0.9, 6:37am 3.0 Afternoon: 12:41pm 1.1, 6:52pm 2.9 Sunrise: 6:35am, Sunset: 8:28pm Best At: 11:24am, 11:50pm Moon: Set 3:36am, Rise 7:12pm	 Morning: 1:02am 0.9, 7:25am 3.0 Afternoon: 1:28pm 1.0, 7:44pm 2.9 Sunrise: 6:36am, Sunset: 8:27pm Best At: 12:15pm Moon: Set 4:31am, Rise 7:54pm	 Morning: 1:47am 0.8, 8:09am 3.1 Afternoon: 2:12pm 0.9, 8:30pm 3.0 Sunrise: 6:37am, Sunset: 8:26pm Best At: 12:39am, 1:03pm Moon: Set 5:29am, Rise 8:30pm	 Morning: 2:28am 0.7, 8:48am 3.2 Afternoon: 2:52pm 0.9, 9:11pm 3.1 Sunrise: 6:38am, Sunset: 8:25pm Best At: 1:27am, 1:49pm Moon: Full Moon, Set 6:29am, Rise 9:01pm	 Morning: 3:06am 0.6, 9:26am 3.2 Afternoon: 3:31pm 0.8, 9:50pm 3.1 Sunrise: 6:39am, Sunset: 8:24pm Best At: 2:11am, 2:33pm Moon: Set 7:30am, Rise 9:28pm

*Not for navigational purposes. Graphic supplied by OceanFun Publishing Ltd. www.tidewiz.com www.tidespy.com www.ofu.co.nz

MOON AND FISH KEYS

New Moon	First Quarter	Full Moon	Last Quarter
Good Fishing	Fair Fishing	Not So Good	

TIME DIFFERENCES FOR OTHER PLACES
To determine tide times at the following places, add (+) or subtract (-) the given time difference from the Thames times listed in the calendar.

PLACE	Hr	Mn	Hr	Mn
Coromandel	-0	05	-0	04
Whitianga	-0	02	-0	06
Tairua	+0	10	+0	21
Whangamata	-0	03	-0	05
Waihi Beach	-0	12	-0	12

Coromandel 'may not cope'

CONTINUED FROM P1

have disabilities. Those people are at risk."

However, both men were heartened to hear reports of people rallying to provide shelter and food to those in need over the weekend.

"That is the real Coromandel spirit, and it's really heartwarming to see that happen," Mayor Salt said.

Waka Kotahi Bay of Plenty and Waikato director of regional relationships David Speirs said he appreciated how significant SH25A was for the Coromandel and how frustrating the closure was for locals and visitors. The transport agency was working through solutions for a long-term fix, he said.

"The situation is complex due to the amount of road surface and earth lost in the collapse. As soon as the weather allows, the geotechnical assessment will recommence, which will inform the best way to re-build the road as robustly as possible."

The ability to start physical work on site would depend on site conditions, which would be assessed this week, he said.

Meanwhile, Thames-Coromandel Civil Defence warns the Coromandel Peninsula is heading into "unknown territory" as weather forecasts show this storm was predicted to extend well into this week, raising further concerns that the catchments "may not cope".

On Monday, MetService issued a heavy rain watch for Tuesday



SH25A collapsed further over the weekend.

Photo: NZTA

and Wednesday. Thames Coromandel District Council said numerous slips, debris and fallen trees were likely to continue to impact the district, with surface flooding likely, especially during the high tide cycles.

Civil Defence Controller Garry Towler said this was the region's third extended storm this month.

"The impacts on our roading network and coast is already significant and costly, and we still have a few days to go until things ease," he said.

"Everyone needs to take care, be aware of what's going on and avoid taking risks."

Nearly every section of the Coromandel's roading system was closed at some point over the weekend, with the north end of the peninsula still isolated on Monday morning. Tapu-Coroglen Rd and the 309 Rd were closed to all but residents. Both roads had under slips and surface damage from previous storms, and were not suitable for heavy traffic.

SH25 also suffered, with multiple slips on Whangapoua Hill and at Ruamahanga Bay on the Thames Coast causing closures in several places, and there was a large slip between Whangamatā and Whiritoa.

The road was closed between Coromandel Town and Whitianga on Sunday night. There was also widespread flooding across the district. SH25 south of Whangamatā was closed for a brief time on Sunday.

While SH2 through the Karangahake Gorge did remain open, the DOC carpark and Owharoa Falls were closed.

"The impact's pretty severe," Mayor Salt said.

"Since the beginning of January, we've had record rainfall - over a metre of rain. It would normally take until June until we get rain of this level."

The Hauraki district was less affected by the weather, however, flooding and slips isolated Kaiiua and closed SH2 at Mangatawhiri and Mangatarata.

Although Ngātea residents rushed to fill sandbags as to protect their homes as water levels rose on Sunday night, Hauraki District Mayor Tony Adams told *The Profile* on Monday morning the flood waters had receded fairly quickly.

Residents were asked to conserve water due to the Paeroa and Waihi water treatment plants becoming clogged with silt and debris, leaving the reservoir's water level below 30 per cent and declining steadily. A pump was being brought in from Hamilton to circumvent the blocked pipe in the hope to supply the plant.

UPDATES: journeys.nzta.govt.nz.



More landslips likely after record rainfall

Continuing downpours on top of "unprecedented rainfall" are increasing the risk of more landslips on the Coromandel Peninsula, Waikato Regional Council says.

The rainfall total at the Pinnacles rain gauge for January has so far recorded 1224mm, which is more than the 1133.5mm that fell in July 1998, making it the wettest month since records began in March 1991.

Regional flood co-ordinator Derek Hartley said council was working to understand "what the impacts of this rainfall on already sodden catchments is likely to be and where".

Based on MetService forecasts for further rain, Mr Hartley said there was a high likelihood of further landslips impacting the Coromandel Peninsula.

"We're taking a precautionary approach in our advice because of the unprecedented rainfall we've already received and the unpredictability of what's to come," Mr Hartley said.

"There may be further landslips which have the potential to be quite damaging.

"So as well as being aware of the potential for rapid rises in river levels, people need to be alert to possible land movement and either contact 111 if you are in immediate danger or otherwise call your local council."

People are urged to keep up-to-date with MetService forecasts, as well as updates from their local council, Waka Kotahi, local civil defence and power providers.

For the latest information, including links, visit: waikatoregion.govt.nz/flood-room.

Thames Hauraki Dance Theatre
(formerly Thames Hauraki Ballet Theatre)

- RAD Ballet
- Jazz
- Contemporary

ages 5+
Classes start Feb 7th
in Thames / Ngatea / Turua

For more info contact Sarah
Ph: 021 618 179
E: sarah@thdt.co.nz

Five generations, one store

READ BROS.
EST. 1867
Hardware

- Fastenings and Extrusions
- Key cutting and Locksmithing
- Interior and Exterior Paint
- Marine Supplies
- PPE and Footwear
- Tools
- Hose and Rubber
- Engineering and Welding Products

308 Pollen Street, Thames
Telephone 07 868 6608
www.readbros.co.nz

LA Z BOY
Great Recliner SALE

Buy one recliner and get a second one

HALF PRICE!*

BIGGEST SELLER

EDEN ROCKER RECLINER
\$1,799* Get a second recliner for \$899*

MIRA ROCKER RECLINER
\$2,699* Get a second recliner for \$1,349*

DALLAS POWER RECLINER
\$3,899* Get a second recliner for \$1,949*

LIMITED TIME ONLY *T&C's apply. Participating stores only. Please see in-store for more details or go to la-z-boy.co.nz

FOR EXCEPTIONAL WINDOWS & DOORS

fairview
EXCEPTIONAL WINDOWS & DOORS

Love your view

FAIRVIEW THAMES
10 Millar Place, Kopu, Thames
P: 07 868 9105 | office@fairviewthames.co.nz
www.fairviewthames.co.nz

BAXTERS LA Z BOY FURNITURE GALLERY

Live life comfortably.

FURNITURE & BEDS R US
205 SEALEY ST, THAMES | PH 07 868 6128



EYECATCHER SHOES

summer

SALE

505 Pollen Street, Thames 07 868 7804
www.eyecatchershoes.co.nz

Death ruled accidental



As part of a Valley Profile series, **MEGHAN HAWKES** explores our local history by seeking out stories of life and death in the Thames Valley

Mary Trumper very seldom left her house in Upper Albert Street, Grahamstown, Thames, but the harried mother of five children did need to go out on June 18, 1872.

Three of the children were at school and she and her husband, Thomas, were home with the two youngest.

At 11am Thomas left for the Thames Advertiser office where he had worked the past five years as a compositor, arranging the text in the newspaper before it was printed.

Sometime later Mary put the fire out before she departed with the youngest child to get some necessities, leaving the front door open behind her.

She also left three-year-old Alice alone in the house, doubtless thinking she would be quicker without a toddler in tow.

She was away about 20 minutes during which time Alice got on to a

stool, took matches from the mantelpiece and set her clothes on fire.

Around 2pm at the Thames Advertiser office Thomas Trumper was told he was wanted. At the door he saw one of his neighbours, Mr Watson, who told him that his child had been hurt and Doctor Croft sent for. At the house, Dr Croft found Alice in her mother's arms, badly injured.

She had been tended to with the help of neighbours and salad oil applied to the burns. Several matches were lying about.

Dr Croft administered what he considered proper remedies but despite the kindness of neighbours and his medical skill, Alice died the next morning.

The inquest was held at the Fountain Hotel, Pollen Street. After taking evidence the coroner said that despite the distraught mother's absence, the jury had enough evidence before them as to the cause of death.

In other circumstances he would have referred to the child being left alone, but he knew how difficult it was for mothers not to sometimes run a risk by leaving their little ones occasionally.

In this case he did not think there was any blame. The door had been

left open, and the fire put out, so that only the minimum of risk was incurred. The jury returned a verdict of accidental death.

Alice was buried at Shortland cemetery.

Five months later another daughter was born to Mary and Thomas Trumper but tragically two years later Mary died aged 30.

She was buried at Shortland cemetery next to Alice. A few weeks later Thomas Trumper returned with his children to his native Australia.

Before he left, his colleagues made him a presentation, the formal language understating the calamities he had suffered:

"In taking your departure from the Thames for Sydney, we, your fellow workmen and friends of the Thames Advertiser office desire to testify our respect and esteem towards you by begging you to accept the accompanying expression (£10 12s) of our regard, with sincere hopes for your future welfare. Wishing yourself and family prosperity and happiness."

Thomas thanked them for the presentation and for their good wishes which had been shown not only on this occasion but on many others since his arrival at Thames.

Hydraulink Thames **24/7 MOBILE SERVICE**

We do Ram Repairs and Servicing

- Hydraulic hose & fittings
- Breakdown services 24/7
- Industrial hoses
- Lubricants & Oils
- Ram repairs & servicing
- General Engineering



Ph 07 868 5435 14C Kopu Road
0274 990 924 Kopu, Thames

Best under pressure



BURTON'S BUTCHERY

YOUR LOCAL BUTCHER

QUALITY EVERYTIME

PROFESSIONAL, HONEST AND RELIABLE HOME KILL PROCESSING AVAILABLE

CALL NOW TO MAKE A BOOKING

Homemade Old Fashioned Sausages and Small Goods Made on Site

Raffle Packs available

OPEN Mon - Fri 7am till 5.30pm
Sat 8am till 1pm

61 Belmont Road Paeroa
07 862 6959

FOR ALL YOUR CATERING NEEDS
Wedding, Funerals, Meetings, Team Building days, Parties
Any occasion you need catered.
50-seat function Room (Burton's Out the Back)

444 Pollen Street Thames
Ph: 0223809735 email: burtonsbistro.catering@gmail.com
website: burtoncatering.co.nz facebook: @burtonscatering
Lunch Bar Opening Hours: 7:30am-3:00pm Monday-Friday

AUTOWORKZ

THE A TO Z OF AUTO REPAIRS

FOR WOFS, LUBES AND ALL MECHANICAL REPAIRS

PRE 2000'S MOTORBIKE RESTORATIONS, SPECIALIZED PAINT WORK & REPAIRS

CALL DALE 867 7195 | 027 372 4797
autoworkz70@yahoo.com
KOHUNUI ST, NGATEA



MM Linen SALE

Selected Duvet Covers, Cushions & Bedspreads

1/2 PRICE

- Cushions
- Jewellery
- Wall Art
- Handbags & Accessories
- MASKS
- MM Linen 100% cotton bedspreads
- Loyalty Cards
- Gold Card Discounts

Lynne's 500 Pollen St, Thames - 868 8725



Alice Parminter, reporting for duty

New reporter at *The Profile*

By ALICE PARMINTER, Public Interest Journalism funded by NZ on Air

Hello *Profile* readers! My name is Alice Parminter and I am the newest journalist here at the *Valley Profile* and Coromandel App.

I am looking forward to meeting you, the people of Coromandel and Hauraki, and bringing your stories to life.

I have been in the Hauraki Plains for about three years. I currently live in Paeroa with my husband and two children. Prior to having children I was a journalist at *Stuff*, and wrote for several community newspapers in central Auckland.

I have also been published in *Oh!Baby* and *Good* magazines.

I'm excited to bring these skills here to the *Valley Profile* and Coromandel App.

Outside of writing, my hobbies are varied and eclectic. I enjoy singing and musical theatre and have performed in a number of shows.

I also enjoy exploring the beautiful area we live in, with Karangahake Gorge and Waihi Beach being particular favourites.

At home I enjoy making art with my kids, baking, and working in my woodshop - it's not unusual to find me covered in sawdust at the end of the day!

I am passionate about people. Getting to know someone's story - what drives them, how they



Alice Parminter joins the *Valley Profile* and Coromandel App team.

Photo: ANNA DOEZIE

feel - these are the things I love to write about. What's important to you and your neighbours is what's important to me.

While I will be making a regular appearance here in print, you will also find me working on our new digital platform, the Coromandel App. This is where

you can find updates on the latest news around the peninsula, including road closures and weather emergencies, as well as all our latest print stories.

There is also plenty of information about the peninsula itself - activities, local people, businesses and eateries.

Feel free to get in touch if you have anything to share with the community, or are just keen for a chat.

My email address is alice@valleyprofile.co.nz or give me a call on 022 527 0988.



This week, the team at the *Valley Profile* and Coromandel App welcome our newest member, journalist Alice Parminter.

Alice will be based in our Paeroa office part-time, and her main role is to write stories for the *Valley Profile* and our new digital platform, the Coromandel App.

The *Profile* received funding from NZ On Air for two years for Alice's position, with the aim of continuing her role after that time with funds raised from advertising on the Coromandel App.

Editor Teresa Ramsey said she was thrilled to have Alice join the team.

"Alice is a talented journalist with a love of writing and a passion for people and our communities," she said.

"We are very lucky to have an experienced journalist like Alice who lives in our community join us at *The Profile*."

The number of downloads for the Coromandel App has soared over the holiday period.

The smartphone app is a valuable resource for locals and visitors to keep up to date with the latest in news and information from throughout Hauraki and the Coromandel Peninsula.

To download the Coromandel App on to your smart phone, go to: coromandelapp.nz/install or search on your app store for 'Coromandel App'.

Advertising on the app includes banner ads, in-story ads and full business listings from just \$10 per week. To find out more, contact Nikki Sanders, Ph 022 130 3885 or email nikki@valleyprofile.co.nz.



★★ WAITANGI DAY ★★ BED SUPER SALE

BEST DEAL!

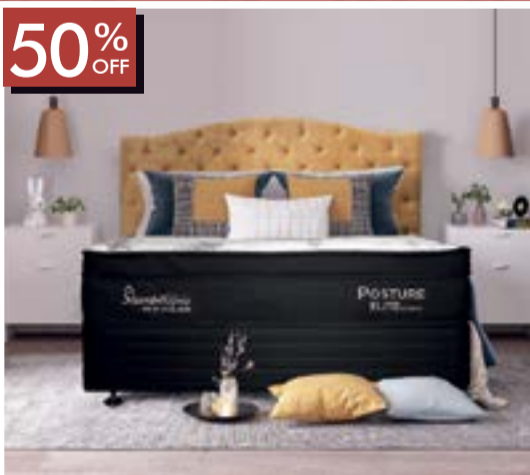
SLEEP CLOUD
Queen mattress + Base

NOW ONLY
\$999



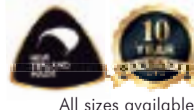
All sizes available

50% OFF



POSTURE ELITE PLUSH
Queen mattress + Base

~~WAS \$3450~~
NOW \$1725



All sizes available

SUPER SAVER!



E-FLEX ADJUSTABLE BED COMBO

STARTS FROM
\$2888



Other sizes available

Valid till: 6th Feb
COUPON

FREE Local Delivery

On purchases of \$999 and above*

Valid till: 6th Feb
COUPON

FREE Old Bed Removal

On purchases of \$1999 and above*

flybuys Earn Flybuys instore with us

Shop 22, Goldfields Shopping Centre, Thames
Mon-Fri 9am - 5pm / Sat 9am - 4pm / Sun 10am - 3pm Ph: 07 868 3332

BEDS4U.co.nz
Your local sleep experts

SPORTS

New cricket nets in full swing

By GORDON PREECE

After three years of challenges including rain delays, junior and senior cricketers can now practice batting and bowling at new cricket nets at Rhodes Park.

Thames Cricket Club secretary Holly Mackenzie told *The Profile* more than 70 cricketers and five committee members were “stoked” with the new nets, which were made possible by the financial support of 19 local sponsors.

“It was Scott [Thames Cricket Club president] and I’s dream when we first got together and created the club [in 2019] - we knew the nets that were here initially weren’t sufficient enough for the juniors,” she said.

“So straight away we knew we had to get nets to grow the club, and when it did eventually happen three years later we were stoked and just amazed by all the help that we got from all the sponsorship from the locals.

“When you think of a \$50,000 project, you can’t just pull that money out of thin air, so for a club that’s only just started off we’ve just had great reaction from the community to help get these up and running and we’re pretty happy about that.”



Thames Cricket Club teammates Blake Mackenzie, left, and Carter Mackenzie in action. Photo: GORDON PREECE

Holly said after obtaining the lease for the nets to be built on council land, construction

was bowled into action mid-2022 with steel posts and a concrete layer installed.

“We then had lots of rain which delayed the turf, because the concrete and the weather

“For a club that’s only just started off, we’ve just had great reaction from the community to help get these up and running and we’re pretty happy about that.”

- Holly Mackenzie

had to be warm for the glue to dry to the concrete, so they were slightly delayed before the start of the season in October,” she said.

“In about November we finally had [the nets] up and running.”

Holly said the nets were now available for the entire cricket community and members of the public to use. “It would give an opportunity for families, and kids, and adults and anyone of any age really to come down and play and train together, it’s not just for the club it’s for everybody,” she said.

“There are multiple times when we drive past and see people down here playing in the nets and just using them to develop their skills.”

Holly also gave a special mention to treasurer Lisa D’Souza and committee member Jane Andrews for their many hours of dedication to the cricket nets project.

PROGRAMMES AVAILABLE FOR 2023

If school wasn't your scene, or if you want to learn to earn, these are some of the FREE options we have for you:

- Retail Level 2 - Upskill your customer service, learn how to deal with the public.**
- Foundation Skills L1, Mechanical Engineering L2, Intro to Agriculture L2**
(these 3 programmes will help you achieve NCEA Level 1 and 2)
- Agriculture Level 3 - Te Mahi Whenua (15 weeks)**
- Horticulture Level 3 (29 weeks)**
- Health & Well Being Level 3**
- Prep for Success**

We also offer some fee paying short programmes – Barista and Defensive driving lessons and Learners courses
Call us for pricing.



Valley Education
free courses • free transport

Call or text us **07 868 7892**
027 314 1577

www.valleyeducation.co.nz

Paeroa Auto Electrical

- Auto Air Conditioning
- Latest Diagnostic Tools for your European Car
- Range of Batteries for Cars, Trucks, Tractors, RVs and more
- On Farm Auto Electrical Service

Ph: 07 862 8565 Email: unipoint@xtra.co.nz
3 Belmont Road Paeroa



BATTERY TOWN
NATIONWIDE BATTERY SPECIALISTS

Scott Simpson

MP for Coromandel

Contact me anytime

0800 550 330
mpcoromandel@parliament.govt.nz
scottsimpson.co.nz
scottsimpsonmp





Authorised by Scott Simpson,
614 Pollen St, Thames.

SPORTS

Centennial celebrated

Alley Memorial Park bowled into its 100th year with a celebration of the milestone at the Hikutaia clubrooms on January 21. Organiser David Corbett said the event was attended by around 120 people who had been associated with the club and speeches were delivered to highlight the tennis, croquet, bowling, fundraising efforts and war memorial aspects of the park.



Around 120 people attended the event.

Photos: PATSY ROBINSON



Oldest bowler Charlie Gray, left, with Nigel Bax.



Allen Alley, left, Pauline Bax and Christine Alley cut the cake.



Organiser David Corbett.



Ray Flookes gives a talk.

In Brief

ALL WELCOME TO DANCE

The Hauraki Thames Scottish Country Dance Club will recommence dancing on February 16 and is looking for new members. To enquire, visit the Band Hall on Queen St, Thames, on Thursday nights, 6:15pm for a 6:30pm start. More info: Ph 027 461 1126.

JOEL FAFARD

Award-winning guitarist Joel Fafard will perform Southern roots and blues classics at The Back Room behind Lotus Realm on February 8 at 7pm. Fafard is using his uncommon skill as an entertainer to embark on a new musical mission, breathing new life into grand old numbers like *Ain't No Grave*, *Sitting on Top of the World*, *Spoonful*, and *Long Black Veil*. Tickets available from Lotus Realm.

WAIHĪ LIBRARY CLOSURE

The Waihi Library will be closed between February 1 and 2 for the installment of a new air conditioning system. Bookworms will still be able to return items to the outside after hours bin while the library is closed and any overdue charges for books due on the closure days will be waived. Staff will still be working on the closure days and can be contacted through the Library Chat portal on the library website, email: hdc-library@hauraki-dc.govt.nz, or Ph: 0800 734 834.

Thames Autos

★ ★ A Division of Takalani Motors Ltd R.M.V.T. ★ ★

HOME DEMONSTRATIONS AND DELIVERIES AVAILABLE WE CAN COME TO YOU

— www.thamesautos.co.nz —

<p>2009 Toyota Rav-4 2.4Ltr, Auto, 4WD 2.0Ltr, NZ New</p> <p>\$11,990</p>	<p>2006 Mercedes A160 Auto, Good kms, Top Condition</p> <p>ONLY \$4,990</p>	<p>2016 Suzuki Vitara Ltd 4WD, 1.6Ltr Auto, Top of Range, NZ New</p> <p>\$19,990</p>	<p>2008 Holden Commodore V6 Auto, Low kms, Excel Cond</p> <p>\$11,990</p>
<p>2014 Mercedes A180 Auto, Low 22kms, As New Condition</p> <p>\$19,990</p>	<p>2017 Mitsubishi Mirage Auto, Very Low kms, Gas Saver</p> <p>\$11,990</p>	<p>2015 Holden Captiva 2.4Ltr Auto 2WD, Alloys, Low 80km, Superb</p> <p>\$15,990</p>	<p>2014 Mazda CX-5 Auto, Diesel, NZ New, Best Example</p> <p>VALUE AT \$13,990</p>

<p style="text-align: center;">LEYLAND STOWE</p> <p style="text-align: center;">Mob: 027 355 5152 Ph: 07 868 8981 or 0800 868 898</p> <p style="text-align: center;">609 Pollen St, Thames RMVT thamesautos@xtra.co.nz</p>		<p style="text-align: center;">No Deposit Finance available on all vehicles. Full workshop servicing & repairs available including Auto Electrical service</p>
---	--	---

Homegrown tumuaki fills college chair

By GORDON PREECE

A former head girl of Hauraki Plains College (HPC) is eager to give back to the community that had “positively shaped” her life as its new tumuaki (principal).

Sharon Moller takes up the torch from Ngaire Harris, who held the top job at the Ngātea college for 21 years.

Sharon, who was most recently principal of Putāruru College, told *The Profile* the appointment was a “real honour” and the opportunity to return home to Ngātea was “an amazing feeling”.

“Absolutely a mixture of feeling extremely thankful, blessed and privileged really to be able to give back to the community that has given me so much to me through my education and time here,” she said. “The opportunity to come home was an amazing feeling... and it’s a real honour to be stepping into the principal role and following Ngaire Harris.”

“She’s been a very positive mentor of mine over the years, and I think the biggest learning from her is to keep a really close eye on where we’ve come from and all of the great things as we continue



Sharon Moller said she’ll spend the first school term as principal celebrating student success.

Photo: KELLEY TANTAU

moving forward to help form a positive future for our kids.”

Sharon said she attended both Ngātea Primary School and Hauraki Plains College, where she was head girl in 1999 and competed in netball, rowing and rugby.

She then studied a Bachelor of Business majoring in finance and

agribusiness at Massey University in Palmerston North. “I thought I was going to be a rural bank manager at the time but then I quickly realised a banking career was not for me so I did the extra year to become a secondary school teacher.

“I returned to Hauraki [Plains College] in 2005 and 2006 as a

teacher and taught social studies and economics, and then went overseas for a few years and returned for a position at Albany Senior High School.

“I was there for eight years and finished as deputy principal and during that time I completed my Masters in Educational Leader-

ship and had done some other studies and I gained the deputy principal role at Huntly College in 2017.”

Sharon said she was principal of Putāruru College for 18 months before she applied to become the principal of Hauraki Plains College.

Sharon said her principal goals for the first term included celebrating the success of the 860 students on the HPC role for 2023 and continuing the college values.

“I want to spend the first term listening to what it’s like for students here, how the community feel about the school, what’s working well for staff... but I’m really excited to continue the notion that excellence is our tradition and that it is more than a school,” she said.

“I really would like to focus on celebrating students’ success - not just NCEA success, but every individual student reaching their goal, reaching their potential.

“The other kind of drive for me in leading a school is creating a community where everybody cares for each other and lifts other people up.”

A pōwhiri was held for Sharon on January 26.



NEW MITSUBISHI ECLIPSE CROSS PHEV

• 2.1L/100KM'S
• 2 X ELECTRIC MOTORS

from **\$52,990**
plus on road costs



IN STOCK NOW

Vehicle is eligible for
NZ Government

Clean Car rebate of

\$5,750

See NZTA website for further details.



Saunders Mitsubishi

201 Pollen St • www.saundersmitsubishi.co.nz

0800 11 11 10

A/h: Warren Hurley 021 941 963

Paul Saunders 021 220 0098

Bundle up your pets' key veterinary care for less hassle and more joy!



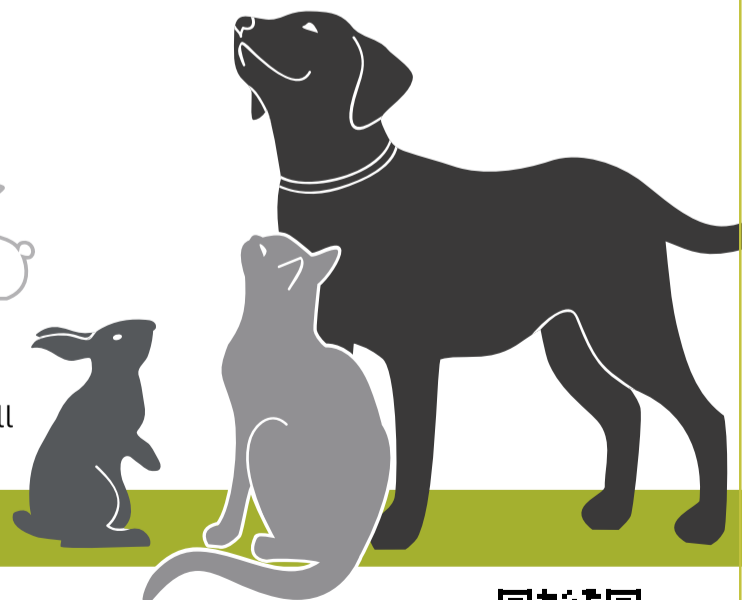
Enrol your pet in Bundle, a budget friendly option to manage your pet's primary veterinary care. Enjoy peace of mind knowing your pet's vet consults, an annual health check and routine vaccinations are covered as well as discounts off dentals, surgery, petfood and flea and worm treatments.

Enrol in Anexa's **BUNDLE** Pet Plan - Less hassle, more joy!



Call into an Anexa Clinic to find out more

- Thames 623 Pollen St, 07 868 7005
- Ngatea 49 Orchard Rd, 07 867 7256
- Te Kauwhata 22 Main Rd, 07 826 3581
- Maramarua 515 Ferndale Rd, 09 232 5891
- Paeroa 39 Belmont Rd, 07 862 8815
- Te Aroha 60 Rewi St, 07 884 8014



BUNDLE
less hassle, more joy



anexa.co.nz/bundle

Rural Life

Grabbing opportunity by the reins

By GORDON PREECE

Lee Gumbley “couldn’t believe” the demand for horse riding lessons after advertising a new riding school in December last year.

The former Paeroa early childhood education teacher told *The Profile* she and farmer husband Mark established Huikaia Horses at their 8.5 acre Maratoto, Hikutaia, property to turn a hobby into a business.

“All my working life before I was an early childhood teacher I worked with horses and thoroughbreds on stations doing mustering and everything, so I kind of built a skill set while teaching,” she said.

“I thought why not combine it and give it a go so I made a Facebook page up and put it out there and I spent the next two days filling up a diary with bookings.

“I couldn’t believe the demand for it out there.”

Lee said Huikaia Horses, which is named after an orchard and showjumper owned by Mark’s family, offered a range of equine riding services. “We do horse experiences for people who just want to come in and have a go, weekly



Oscar Gumbley on Kenny, left, Arlo Gumbley on Skye, Lee Gumbley and Mara Gumbley on Blue. Photo: GORDON PREECE

or fortnightly lessons, and I also do lessons on people’s own horses so they have their own horses and I can come to them,” she said.

“We’re also going to do pony rides at birthday parties.

“I’m not teaching anything fancy grand prix dressage, it’s more just being able to enjoy the horses you’ve got or just getting out there and having fun and being capable.”

Lee said she had also re-

ceived inquiries from competent riders who no longer own horses who would like to “go for a nice hack” and has talked with landowners about riding over their properties.

“I’ve had lots of people just

reaching out wanting to support us and it’s blown me away so the community support has been awesome,” she said.

“Most of my clients are school kids so I’m filling up after school time, it’s chocka, and I’m doing Saturday’s as well. I’m also trying to keep Sunday’s free unless it’s just the one off so I could spend time with my kids.

“Because part of the idea of doing this was that it means that I’m available to my kids, because doing long hours they felt like they hardly saw me so with [Huikaia Horses] they can come out and see me.”

Lee said there were “millions” of benefits for people who work with horses.

“I think with horses it touches so many bases because there’s that discipline side of it, you’re working with an animal that you get angry and frustrated with,” she said.

“They teach you you’ve got to have patience, the better your dispositions are the better their dispositions become too. I think for kids it’s a great tool to have to help with managing emotions and getting successes from that so I think there’s millions of benefits working with horses.”



NEW HONDA TRX420



**4x4, 5 Spd Manual,
Non Power Steering,
2 Year, 12,000km
Warranty,
Limited Stock**

**\$16,209
inc GST**



Hauraki Plains Motors

1 Pipiroa Road, Ngatea • Ph 07 867-7021

A/Hrs Mike 027 440 4681, Miles 027-227-1121 Email: miles@hpmotors.co.nz

Health & Wellbeing



Introducing the Walter & Co team

Leanne - Salon Owner, Senior Stylist and Apprentice trainer Leanne has had the salon for over seven years now and although she is fully booked and no longer taking on new clients she is on hand to offer guidance and education to her team. She is currently training two apprentices alongside maintaining her fabulous clientele.

Sophia - a fully qualified Hairdresser, Sophia is our star colourist creating a range of beautiful looks for her clients, her makeovers are stunning. Have a look at our social media to view her work. Sophia is availa-

ble for all hair services feel free to book a free consultation.

Rachel - is our emerging Stylist, she is also an excellent cut and colourist and has a growing following of clientele, Rachel has availability for some new clients so please message if you'd like to have a consult with her to discuss new look.

Ava - is our new apprentice, she has already mastered the art of a fabulous shampoo and is busy learning a range of new skills. Ava will be looking for some training models this year so get in touch to register your interest.

- Supplied by Walter & Co

Risk and reward of technology

OPINION



By MICHAEL WILKES

It seems to be widely accepted that the world is a more dangerous place than it was a few generations ago.

The days when kids could walk to school or down to the local dairy without fear of abduction. When children could go out and play and were simply told to be home by dinner. Indeed, times have changed. But I do wonder if the change is not as bad as we perceive, and if the change is something of our own making.

Technology has seen our ability to access information and news at a dizzying pace. Dastardly happenings are captured by self-titled influencers, posted on Instagram, acquired by media and pushed through to your pocket as the latest news story.

So my question that I often consider - Is the world more dangerous or is it the accessibility to informa-

tion that makes us think it is? When you take note of how much confronting news comes from the hand of an amateur cell phone recording. When we consider how news is available today.

What was once the evening news, and the odd newspaper article is now 24 hours of information at our fingertips. Information that comes through a myriad of news outlets, through social media influencers and through friends' news feeds.

I wonder if my parents would have let me walk to school or play in the reserve till dark if news was gathered and delivered at the same pace it is today.

The result of where we are now has seen parents heavily criticised in the news and social media if they give their kids freedom and it goes wrong.

And so I find myself dancing a fine line. The line of allowing my young children the freedom to explore and discover the world with independence and learn resilience, whilst doing it in a responsible way.

I believe the best way we can truly protect our kids now and into the future is through introducing risk. We should be teaching our kids that risk is not a thing to be avoided. Instead encouraging them to be brave and teaching them responsible risk taking. For our kids we have a few simple phrases and questions to help make decisions.

- "Is it worth it?" This is about linking back to what is important to them. And is a great question to

reflect on too. After a crash on the bike... Was it worth it? My kids have learnt that often it is worth it and they get back on.

- "Once I start, I know I will feel ok." Encouraging them to remember that fear normally goes once they start doing the thing they are worried about.

- Try it - Track it - Build it. We teach them to reflect on their experience and build on it for next time.

We cannot escape risk in this world. And I see the effect in youth work everyday when a young person has been sheltered, protected, and given the opportunity to opt out if they are afraid. In the long run it is not helpful.

We instead need to be teaching our kids how to choose healthy risk that builds on what they want in life. And teach them how to reflect in order to grow from the experiences that go wrong.

We are piloting an App that offers links to resources to support parents to journey well with their kids using the underpinning theory from our resilience programmes. If you would like to read more for your family, please follow the instructions below.

1. Download INFOODLE in your app store
2. Type in LWT for the organisation
3. Select public user or request to register if you'd like to be added to our mailing list
4. Press the drop down menu on the left to access tips for families.

- Michael Wilkes is a Living Well Trust Youth Worker



Classic to contemporary styling

All aspects of colouring

Blonding specialists

"City styling in the heart of Coromandel"

558 Pollen St, Thames. Phone 868 6105
www.facebook.com/walterandcothames



www.walterandco.co.nz
Instagram@walter_andco

Ohu Hinengaro

- Mental Health and Addiction Services
- Te Kūwatawata ki Hauraki (Kaupapa Māori Approach)
- Whānau Pai (Integrated Primary Mental Health)

Distress Hotline : 0508 111 555

Self Referrals Accepted



TE KOROWAI
HAUORA O HAURAKI

0508 835 676
korowai.co.nz



Thames Centre Pharmacy

Dispensary & Healthcare Advice

Efficient convenient prescription dispensing

Open Monday to Friday
9am - 5pm
(closed 12.45pm - 1.45pm)

Thames Medical Centre
817 Rolleston Street
Thames

Ph 07 8685100 – Fax 07 2800724
pharmacist@thamescentrepharmacy.co.nz

Our team are locals supporting locals

HEALTH & WELLBEING



SPECIAL OFFER!

BOOK YOUR PLACE TODAY!

Contact Nikki
022 130 3885

nikki@valleyprofile.co.nz



Book your advertisement in our monthly Health & Wellbeing page for six issues and receive a free 1/4-page editorial space to showcase your business

Terms & Conditions apply

/Richardsons

Paeroa / Ngatea



/Richardsons

Thames



35 Keepa Avenue, Paeroa **\$620,000**

NEW LISTING



- 3 brms, open plan, modern kitchen, 2 heatpumps
- Beautiful views, decking, double carport
- 740m2 (m o l) in a cul-de-sac, room for caravan

RG1995 🛏️ 3 🚿 1 🚗 1

8074A SHWY 26, Hikutaia **\$605,000**



- 3 brms, open plan kitchen / dining, separate toilet
- Sep lounge, wood burner + wetback, sgle carport
- 793m2 (m o l) beautifully presented section

RG1981 🛏️ 3 🚿 1 🚗 1

458 Thames Coast Road, Te Puru **\$420,000**

NEW LISTING




If you are looking for a bolt hole on the Thames Coast where you can walk in and put your feet up then take a look here. Its basic and its tidy which is just what you want for a weekend getaway place. Somewhere that after a day's fishing you can sit on the deck with some mates and enjoy a beer.

RT5758 - PHILIP JUDD 027 449 7132

31 Mahana Road, Ngatea **\$649,000**

PRICE REDUCED



- Renovated home/ 3 dble bdrms/ Modern kitchen
- Heatpmp / Insulated top & bottom
- Sngle grge/840m2 (m o l)/Amazing location

RN1446 🛏️ 3 🚿 1 🚗 1 🚗 1

781 Awaiti Road **Offers Over \$600,000**



- Lovely rural outlook - 5000 square metres
- 3 Bedrooms - Separate lounge - Garage
- Contact Kevin Fathers 027 279 9800

RRP228 🛏️ 3 🚿 1 🚗 1 🚗 1

16B Springfield Avenue, Ngarimu Bay **\$399,000**




This section located in the sought after Ngarimu Bay is ready for you to build your dream! Make the most of the amazing panoramic sea view. 1100m2 (more or less) with power and phone already to the builders box. Beautiful, elevated position with a bush backdrop and bird life aplenty.

RT5755 - KATHY MUIR 027 33 44 600

PAEROA 07 862 7888 54 Belmont Road paeroa@richardsons.co.nz	NGATEA 07 867 7800 33 Orchard Road ngatea@richardsons.co.nz	THAMES 07 868 6978 556 Pollen Street thames@richardsons.co.nz
---	---	---

/Richardsons
Real Estate Ltd MREINZ
Licensed REAA2008

For further properties please visit our website
www.richardsons.co.nz

/Richardsons
Real Estate Ltd MREINZ
Licensed REAA2008

AVAILABLE NOW

- One Bedroom Apartment, Level 3
- Two Bedroom Apartment, Level 1
- Two Bedroom Villa, 134sqm, 1 bathroom, guest WC, single garage

ENQUIRE TODAY!

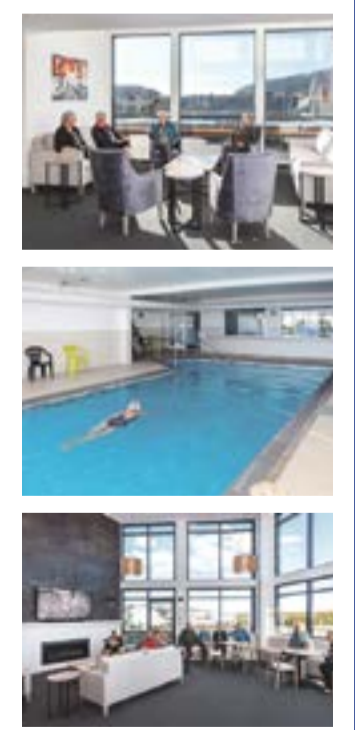
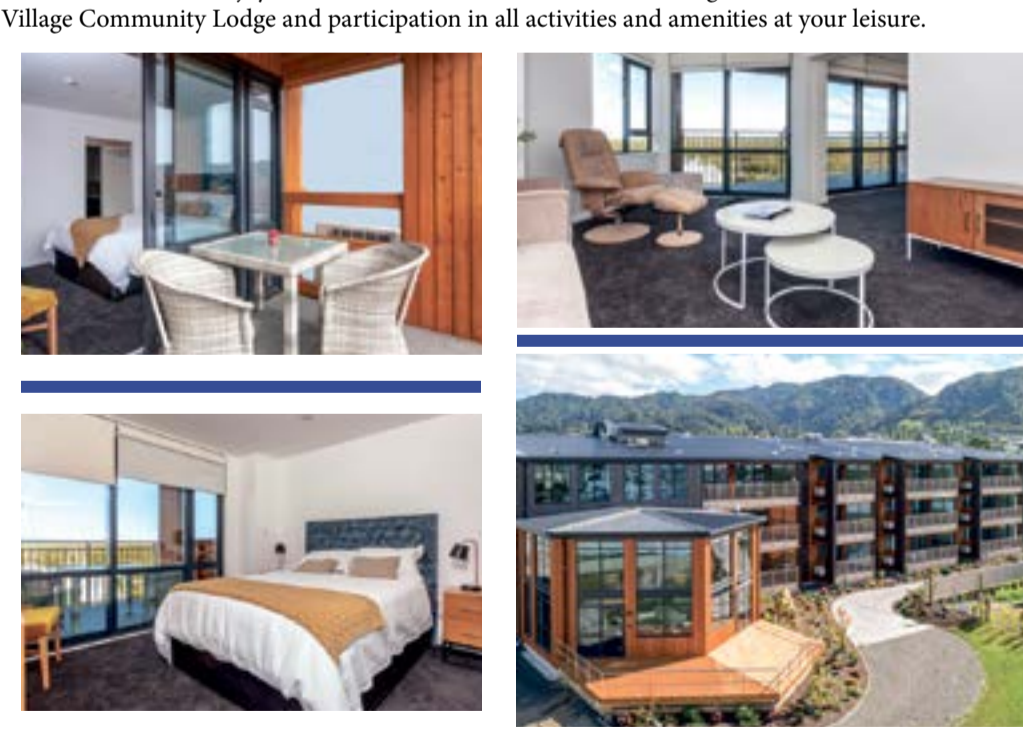
STAGE 1 IS NOW COMPLETE
ENQUIRIES FOR STAGE 2 ARE WELCOME!

All apartments are within walking distance to Thames' shops, cafes and walkways.
The perfect location to enjoy your fun-filled retirement

Our open plan, single level apartments feature covered balconies with fantastic views of the sea, Kauaeranga River and mountains.
Each unit's elegantly finished kitchen, lounge, bedroom and bathroom offer stylish warmth and light.
All residents enjoy scenic views from each level's shared lounges, use of the Village Community Lodge and participation in all activities and amenities at your leisure.

PHONE US to view by appointment

Come and experience the difference!




Richmond Villas
LIFESTYLE VILLAGE

Living the lifestyle, loving the choice...
A lifestyle village in Thames on the Coromandel

82 Richmond St, Thames 0800 868 5484 www.richmondvillas.co.nz



CALL THE EXPERTS

ARBORIST



TREE SHAPES

Qualified Arborists

- Treework Large & Small
- Stump Grinding • Hedge Trimming
- Fruit Tree Pruning • Chipping

For a free quote call
07 868 3985 or 0274 726627

BUILDING SERVICES

Quantity Surveying

Residential & Commercial Construction
Pre-Construction Services
 Estimates • Tenders • Trade Measures
Administration
 CCA Progress Claims • Variations • Final Account

imeasure limited

Professional Building Services
 Contact James - Ph 027 515 4004
 email : imeasure@outlook.com

BUILDING SERVICES



PROFESSIONAL TRADE SERVICES

BUILDING | ELECTRICAL | PLUMBING

Kitchens * Bathrooms * Pergolas * Fencing
 Decks * Gibbing * Tiling * Landscaping
 Home Maintenance and Much More

Your 1 Stop Shop – www.ptsnz.com
 3 Coronation St, Paeroa Ph 0800 088 001

CLEANING



A CLEAN UP CREW

- Lawn mowing
- Weedeating
- Hedge & tree trim
- Section clearing
- Gardening
- Rubbish removal
- Interior house clean
- New build clean/clear
- Odd jobs considered
- One off jobs welcome

0800 464 898
 Alaine Hedges
 027 242 7268
 John Hedges
 027 457 2018
 Email: info@ajcleanupcrew.co.nz



Mary Pearce's dogs have never been healthier since feeding them her K9 Cuisine. Photos: SUPPLIED

Paws-itively promoting raw pet food

Noticing the benefits of raw pet food for her own pets led Mary Pearce to establish K9 Cuisine Ltd in Auckland in 2014. The business, which she now operates from her home in Waikino, offers a variety of frozen raw food items for dogs and cats delivered free from Thames Valley to Te Puke and surrounding areas.

"I was having dietary and health issues with my own dogs so I started looking into raw pet food and decided I would give it a go.

"I'm happy to say eight years later my dogs have never been healthier - I saw the real benefits of them eating raw food as na-

ture intended," she said.

"We're really trying to push the real benefits of dogs eating raw diets and it's suited for cats as well."

K9 Cuisine offers a broad range of raw pet food, including chicken, beef, lamb and a meat mix containing everything the body needs for a complete diet.

They also offer rabbit, possum, salmon, venison and turkey, plus a variety of bones.

"Our food is also suited to cats, including a fussy mix as cats can be so fussy," she said.

Contact K9 Cuisine, Ph 027 221 2282 or email: mary@k9cuisine.co.nz, or go to www.k9cuisine.co.nz for more information.

DRIVING ACADEMY

DRIVING COURSES

Driving lessons
 Learner Licence courses*
 Defensive Driving courses*
 Book now 027 314 1577 (text or phone)
 *register your interest
 *see if you are eligible for free courses
admin@valleyeducation.co.nz




EARTHWORKS & CARTAGE



Digger, Bulldozer & Truck Hire

- Mulching
- Cartage of Metal, sand, fertiliser, palm kernel, hay & maize silage

PHONE TIM 027 278 5384
T & A MCWATERS LTD

ELECTICAL INSPECTOR



- Caravan e-wofs
- Home and Business electrical inspections
- IQP emergency lighting inspections

Servicing Hauraki, Coromandel and the Western Bay of Plenty

021 944 309 - ben@inspectrical.co.nz

ELECTRICIAN

- Rural & Dairy
- Residential
- Industrial
- Commercial
- Heat Pumps
- Service & Maintenance

ngatea@laserelectrical.co.nz



(07) 867-7049
 "Totally Dependable"

ELECTRICIAN



INNIS ELECTRICAL

- Domestic
- Industrial
- Commercial
- New Installations
- Re-Inspections
- Electrical WOF's

027 539 5572
theinnis@xtra.co.nz
 Registered Electrician & Electrical Inspector
 Covering Paeroa and surrounding area

FUNERALS



Valley FUNERAL SERVICES

FUNERAL DIRECTORS

Our family serving yours — in the Hauraki & Thames Corromandel Districts

- Traditional & Bespoke Funerals
- Direct Cremation
- Pre-Planning
- Eco Funerals / Natural Burial

Ph: 0800 862 6362
Des & Christine Necklen
 Funeral Directors




EXCAVATIONS



FLASH EXCAVATIONS LTD

20 YEARS OF EXPERIENCE

Fast & Efficient
021 215 8704
FLASHEXCAVATIONS.CO.NZ
FLASHEXCAVATIONSLTD@GMAIL.COM

EARTHWORKS SERVICES

GENERAL EARTHWORKS
 DRAINAGE
 CIVIL PROJECTS
 DRIVEWAYS AND ROADING
 AGRICULTURAL
 DOMESTIC SITES

"PROVIDING SERVICES THROUGHOUT THE AUCKLAND AND WAIKATO REGIONS"

FIREWOOD



SPLINTA'S FIREWOOD SERVICES

Old Man Pine • Gum • Mac • Pine

Free delivery to Thames, Paeroa, Ngatea & Te Aroha

Ph: 0800 7754 6827
[splintasfirewood](https://www.facebook.com/splintasfirewood)
 Email: splintasfirewood@gmail.com

GARDEN CARE SERVICES



Call the Gardener

YOUR GARDEN - YOUR WAY

Garden Care Service
 Hedge & Shrub Trimming
 Edicapping & Small landscape features

Call Paul (028) 4640 600
www.callthegardener.co.nz

HAIRDRESSER



Magic Scissors

HAIRCUTS
WALK INS WELCOME

NEW LOCATION
 OPPOSITE MITRE 10

APPOINTMENTS NOT NEEDED **POLLEN ST THAMES**

HIRE CENTRE



THAMES HIRE CENTRE

Jellicoe Crescent, Thames

Perrin Newland
Telephone: 07 868 9350
 Email: hire@thameshire.co.nz
www.thameshire.co.nz

HOME HANDYMAN AND COMMERCIAL HIRE

HOMECILL

Hunts Home Kills

We have over 30 years of butchery expertise.

- We are dedicated to you, the customer.
- Hygienic, vacuum packed products.
- Professional facilities.
- Smoked meats are our speciality.
- 12 - 14 days hung on the bone, minimum
- Game orders over 10kg
- Premium custom orders to meet your needs

Ph: 0800 250 939 • Mob: Mike - 021 411 210
 E: butchersapron@yahoo.co.nz
 W: huntshomekills.nz • Follow us on FB

HYDRAULIC HOSES



THE HYDRAULIC

Mobile Hydraulic Hose Service
 Whangamata/Thames/Coromandel Region
hyd hosecompany@gmail.com

Matt: 0274 123 996
 For Service That Counts

KITCHENS



DESIGN XPRESSIONS

WAIHI KITCHENS & INTERIOR JOINERY
 WE OFFER PERSONAL SERVICE, DESIGN AND QUALITY KITCHENS.

P. 027 426 9966

MOBILE MECHANIC



mobile mechanics

We come to you...

- Servicing & repairs on all cars, trucks, campervans, machinery & small engines
- Batteries available

Phone Brian: 021 259 4779 or 876 5401
 Email: robosvette@gmail.com

PAINTER



That Painter Ltd.

Residential & Light Commercial Painting
 We paint like Picasso only cheaper!

- Interior & Exterior • Residential & Light Commercial
- Fully Insured • Workmanship Guarantee

Contact Stan on 0223137911 to discuss your project.

PET FOOD

DOG TREATS

Thames Market every Saturday...
 Rain or Shine

E: debstra.dogs@gmail.com
 FB: Deb's Dog Treats'n'Meats

CALL THE EXPERTS

PET FOOD

K9 CUISINE



Don't nibble on kibble - gnaw on raw

- Beef • Chicken • Goat • Horse
- Lamb & Tripe • Meat Mixes
- Specialty Mixes • Bones • Veal

E: mary@k9cuisine.co.nz
P: 027 221 2282

W: K9cuisine.co.nz • FREE Delivery •

PLUMBER



PLUMBING • DRAINAGE • GASFITTING
GENERAL MAINTENANCE
Thames 07 868 6021
Whitianga 07 866 0070
Whangamata 07 865 7151
Waihi Beach 07 863 5621

REAL ESTATE AGENT

M 0276 409 005

P 07 868 9820

nicole.clapp@harcourts.co.nz
harcourts.co.nz

Gold Star Real Estate Ltd
Licenced Agent REAA 2008
519 Pollen St, Thames

Nicole Clapp



SEPTIC TANK CLEANING

ALLENS UNITED

Paeroa (2015) Ltd

LIQUID WASTE SPECIALISTS

0800 862 720 | 027 442 0067

WINDSCREENS



We come to you!

Chip Repairs - Windscreen replacements
-Insurance claims

PH: 0272127750
www.precisionwindscreens.co.nz

RUBBISH REMOVAL

Smart Bins

Skip bins, Wheelie Bins, Farm Bins

Phone us or book online
0800 4 MY BIN or
www.smartbins.co.nz

TYRES & BATTERIES



- ▶ Stockists of all major tyre brands
- ▶ Exide Batteries with extended warranties
- ▶ Wheel Alignments.

314 Pollen St, Thames
Ph 868 8182

Last month's winner of the lotto ticket was Ellen Henderson, who found Pete in the January 11th edition in the Metal Recoveries advert.

Go to page 2 for details on how to enter.



CLASSIFIEDS - Deadline 1pm Friday

Death Notice

KAY: Pamela Faye, (Pam) Nee Burton.
on Saturday, 21st January 2023 peacefully at Ohinemuri Hospital Paeroa. Dearly loved wife of Ken for over 60 years. Loved mother and mother-in-law of Terry and Donna, and Leanne. Loved grandmother of Angela, Stephen, Kaylee, Jamie and Hannah. Thank you to Clare and the team for their love and care of Pam over the past 5 years. As per Pam's wishes, a private cremation has been held.



Diamond Wedding Anniversary



LYNCH - DENNEHY
Michael & Moya married on 26th January 1963 at Grey Lynn Catholic Church, Auckland. Congratulations Mum & Dad. With lots of love and best wishes for the future. James, Richard, Angela & families

Situations Vacant

Logging Truck Driver
Full Time position in the Hauraki Area
MUST:
Be punctual, honest and reliable.
Hold a current Class 5 License.
Logging experience preferred but not essential.
Also casual position available but must have experience.
Please phone Chris on 0210 229 3626

For Sale

Double 4 poster bed, as new. Perfect for a villa. Carved dark wood. Ph 021 047 9082

Gardening

Stump Grinding. All sizes, all areas. Free quote. Ph 021 060 7659

Handyman

Mowing, hedges, fencing, gardening, carpentry, painting, retaining walls, welding, waterblasting. Work is good quality and I will not attempt to work outside of my skills. Insured. Dennis Schuler 022 129 0169

THAMES HANDYMAN & BUILDING SERVICES

Building, home maintenance & general gardening services
Phone: Fleur or Crighton 0273 913 283

Public Notice

The winning tickets of the Waihi Bowling Club 1000 Tickets Cash Raffle drawn on 26th January 2023 are:
0778 0534 0631
0706 0714 0904
Thank you to everyone who bought a ticket

Storage

STORAGE KOPU, PAEROA TE AWAMUTU

"New Units"
Ph 027 440 7101
07 868 3033
Safe n Sound Storage
www.safestorage.co.nz

Thames Valley Storage - secure, dry units available, two sizes. Call Trev 027 4076966

STORE 4 U Waihi. Clean, dry, alarmed. Call Curly 021 746 608.

Wanted to Buy

Motorcycles, 4 wheelers & side x sides. Going or not. Phone 027 216 6867. A1 Motorcycles

Public Notice

Temporary Road Closure



Pursuant to the Section 11(e) of the Tenth Schedule of the Local Government Act 1974, notice is hereby given that for the purpose of a Highland Games and Tattoo event organised by Highland Games and Tattoo Committee it is intended to close the following roads to ordinary vehicular traffic for the period indicated hereunder. During the proposed period of closure provision will be made for ordinary vehicular traffic, which would otherwise use the road, to use alternative routes.

Period of closure: Saturday 11 February 2023 from 6.30am to 6.30pm.

Road to be closed:

- Willoughby St, from intersection of SH26 (Arney St) to intersection of Corbett St.
- Mackay St, from intersection of SH2 to intersection of Willoughby St.
- Hall St, from intersection of SH2 to intersection of Willoughby St
- Corbett St, from intersection of Albert St to King St
- King St - entire length..

Alternative provision for ordinary vehicular traffic will be made with signs, cones and barriers to redirect traffic on detour.

It will be an offence under the above regulations for any person otherwise than under authority of an authorised permit to use the road for ordinary vehicular traffic during the proposed period of closure.

L D Cavers
Chief Executive
Hauraki District Council

Situations Vacant

Peninsula Memorials are looking for a Labourer

to help assist in the Manufacture, Restoration and Installation of Memorials. Travel and lifting involved. Full time position. Training will be provided. This position is based in Thames. Please email cf@pmthames.co.nz



PAPER RUNNERS

We have vacancies for reliable paper runners in Tararu South in Thames & Ngatea to deliver the newspaper that is being read.

Please contact Geoff via email admin@valleyprofile.co.nz for more information.



DEADLINE

As next Monday is Waitangi Day, classified deadline will be 1pm FRIDAY

3rd February

022 130 3885 | nikki@valleyprofile.co.nz

PHOTO SALES

Photographs taken by the Valley Profile are available for purchase, contact us today!

editor@valleyprofile.co.nz
0204 0944 853



Brett Harris Electrical 2016 Ltd

For all your Electrical Requirements 24/7

Specialist in all Farm Installations and maintenance.

Domestic - Rural Commercial

7 Mahuta North Road, Hauraki Plains

Tel: (07) 867-5196

Mobile: 027 270 2804

Serving the Hauraki Plains for 25 years



PH: (07) 868 9422

Stephen Young
0274 820 536



P.O. Box 768, Thames

DEPOT: 26 QUEEN ST, KOPU THAMES

Ruby's charm ingrained at School of Mines

By GORDON PREECE

Love for Thames history led Suze McElroy's move to the School of Mines site in Thames to become the visitor services co-ordinator.

She told *The Profile* she was keen to share a gemstone called Goodletite or Ruby Rock, which is on display at the Cochrane St tourist attraction.

"It's a stunning rock. Crystal shops have the shiny tumbled rich-coloured gemstones which really attract people, but when you visit our museum you really gain an appreciation for how beautiful rocks are in their raw form," she said.

"Some are breathtaking. Ruby Rock might seem like an unassuming rock. It's encased in an emerald green fuchsite that glitters all over. The real magic is inside, when sliced open it reveals its small ruby gemstones."

"It is incredibly rare, it's only found in one place in New Zealand in Hokitika in the Glacier Moraines. There are reports that old time miners in the 1800s even threw it away believing the rock had no value.

"It's since been reclassified as New Zealand's only precious gemstone. It's one of New Zealand's best kept secrets."

Ms McElroy said the Ruby Rock at the Thames School of Mines was named after an assistant to renowned University of Otago professor James Gow Black, who travelled all over New Zealand in the 1800s lec-



Suze McElroy with the ruby rock at the Thames School of Mines Rock Shop.

Photo: GORDON PREECE

turing all things gold mining. He regularly visited the Thames School of Mines, educating its students. He travelled with his assistant William 'Wullie' Goodlet. Ruby Rock is unofficially referred to as Goodletite after the loyal and trustworthy 'Wullie', who gifted the specimen we have on display to the school in honour of his relationship with Mr Black.

"It is a significant specimen in our collection. Visitors to the museum love it because it's both unusual and uniquely ours," Ms McElroy said.

She has also been amazed by the diversity of visitors to the School of Mines.

"We have rockhounds who are rock collectors and they come in looking for New Zealand specimens to add to their collections.

They're out in the bush, on our beaches, in streams fossicking for rock samples," she said.

"Then we have the older gold miners with fabulous stories and who are a wealth of knowledge.

"The younger geologists' jaws drop when they walk into the museum and see our extensive collection."

The mineralogical museum was a fantastic learning resource

for its students and still fascinated rock lovers today, she said.

The Heritage New Zealand site also had a retail offering, however, the Ruby Rock was not for sale though could be viewed by visitors.

"Since working at the Thames School of Mines I have a new appreciation for rocks, crystals and geology in general - it's been an amazing education."

JOCK MUNRO MOTORS LTD

HEY LOOK!
NEW YEAR SALE

203 Walter St Thames Ph 07 868 8635 AH 868 8636

HEY LOOK!
NEW YEAR SALE

All vehicles sold with new W.O.F. and current rego

1999 HOLDEN VECTRA

2.2L Auto, Sedan, Silver, New rego, New WOF, Original condition



LOOK AT, BUY IT
\$2,250

1996 HONDA ACCORD

2158cc Auto, Mags, 196,000 kms, Drives Well, Very smart in Metallic Blue



LOOK AT, BUY IT
\$3,995 BEST AVAILABLE

2006 TOYOTA CAMRY SPORT

2400cc WTi Auto, All Extras, Original



LOOK AT, BUY IT
\$5,850

2007 VW PASSAT S/WAGON

Up in kms, All Electric Extras, Great Condition



LOOK AT, BUY IT
\$6,500

2004 TOYOTA ESTIMA

158,000 kms, 2360cc Auto, All Extras, 7 Seats, Best Available



LOOK AT, BUY IT
\$5,995

2001 HONDA CONCERTO

4 Door Sedan, 1600cc, 5 Speed, Up in kms, Very Tidy, Drives Well



LOOK AT, BUY IT
\$2,850 BE QUICK

1999 MITSUBISHI DIAMANTE

Auto, Extras



LOOK AT, BUY IT
3 to Choose \$2,500

1997 FORD LASER A CLASSIC DREAM

2 Door Hatchback, 1600cc Auto, In immaculate unbelievable condition. Same owner for 19 years. Restore.



LOOK AT, BUY IT
\$4,250

TOYOTA 2005 TOYOTA COROLLA GLX

1.8L 5 Speed, All Extras, Top Condition, Up in kms



LOOK AT, BUY IT
\$4,250

JOCK'S EXTRA SPECIAL 1994 MAZDA FAMILIA

CD, Mags, Air Con, Rear Spoiler, Tinted Windows, Central Locking, 227,550kms, Immaculate Condition, In Silver



LOOK AT, BUY IT
\$3,600

HONDA 2004 HONDA ACCORD EURO

2.4L, 5 Speed Manual, All Extras, Rear Spoiler



TOP CAR
\$4,995

LOOK AT, BUY IT

JOCK'S SPECIAL 2008 MAZDA PREMACY

1998cc Auto, CD, Mags, Electrics, Bluetooth, 7 Seater, 127,000kms



LOOK AT, BUY IT
\$6,995

TOYOTA 2006 TOYOTA AVENIS

109,000kms, Mags, Electrics, In Silver, Immaculate

2005 TOYOTA SENTRA \$4,895

5 door S/Wagon, All extras, 1500cc Auto, 7 seater.

In white. VALUE

2002 TOYOTA CAMRY GL \$4,500

2200cc, 5 speed manual, 2.2P, Sedan \$3,995

182,000 kms, all extras

DAEWOO 2004 DAEWOO NUBIRA SWAGON

Original in Meatallic Blue, 1600cc Auto, \$4,695

143,000kms, GOOD VALUE \$3,995

HONDA 2004 HONDA ODYSSEY AERO

Station Wagon, In White TO ARRIVE

NISSAN 1992 NISSAN MAXIMA

2500cc Auto, Up in Kms, Very tidy in white \$4,260

\$2,995

HOLDEN 1997 HOLDEN VF COMMODORE ACCCLAIM

3.8L Auto, CD, Mags VALUE \$3,995

THAMES COMMUNITY PATROL



is seeking volunteers to join our team.

We have a Community Patrol vehicle and cover business areas and streets from Kopu to Tararu 3 - 5 hours most nights with occasional day patrols. We always work in pairs and have direct contact with police via police radio at all times.

If you are interested in joining our team contact Graeme Wood 027 417 8224 or 07 868 8095

Proudly sponsored by **READ BROS.** Hardware

THAMES VALLEY TANGATA ORA TRUST

The People's Wellbeing Trust

Total Mobility Scheme assessors



**SALES
SERVICE
HIRE**



We do our best to source other products on request

DAILY LIVING PRODUCTS

- Reachers
- Sock Aids
- Walking Sticks
- Contenance Products
- Bathroom & Toilet Aids

607 Mackay St, Thames (Opposite the hospital) • Ph: 07 868 7723 or 027 383 1117 • E: tvtot2017@gmail.com

Opening Hours: Monday to Thursday 10am - 3pm, Friday 10am - 1pm - After hours by arrangement

SUDOKU

Fill the grid so every row, every column and every 3x3 box contains the numbers 1-9

		4	6		5		8	
3				8				5
1		5		7		9	4	6
			3		6	5		
5	9	1	7		8	6	3	4
		3	1		4			
8	1	9		3		4		7
4				6				9
	5		9		7	3		

EASY

					3			2
6				5				
1	3					6	5	
	1			2		8		
		6	1		8	2		
		3		4			6	
	2	1					9	7
				8				4
5			3					

MEDIUM

		6	9	2				
	4	3				9		6
7					3	1		
					2	5		4
			7		4			
3	4	8						
	7	3						8
6	2					7	9	
				8	7	6		

HARD

85

HARD

8	1	6	9	2	5	3	4	7
2	4	3	1	7	8	9	5	6
7	9	5	4	6	3	1	8	2
9	7	8	6	1	2	5	3	4
5	2	1	7	3	4	8	6	9
3	6	4	8	5	9	2	7	1
1	5	7	3	9	6	4	2	8
6	8	2	5	4	1	7	9	3
4	3	9	2	8	7	6	1	5

85

MEDIUM

9	5	8	6	1	3	4	7	2
6	7	2	8	5	4	9	1	3
1	3	4	2	9	7	6	5	8
4	1	5	7	2	6	8	3	9
5	9	1	7	2	8	6	3	4
2	8	3	1	5	4	9	7	6
8	2	1	4	6	5	3	9	7
3	6	7	9	8	1	5	2	4
6	5	4	9	3	7	2	1	8

EASY

9	2	4	6	1	5	7	8	3
3	7	6	4	8	9	1	2	5
1	8	5	2	7	3	9	4	6
2	4	8	3	9	6	5	7	1
5	9	1	7	2	8	6	3	4
7	6	3	1	5	4	8	9	2
8	1	9	5	3	2	4	6	7
4	3	7	8	6	1	2	5	9
6	5	2	9	4	7	1	3	8

Puzzles © The Puzzle Company
www.thepuzzlecompany.co.nz

JUMBO CROSSWORD

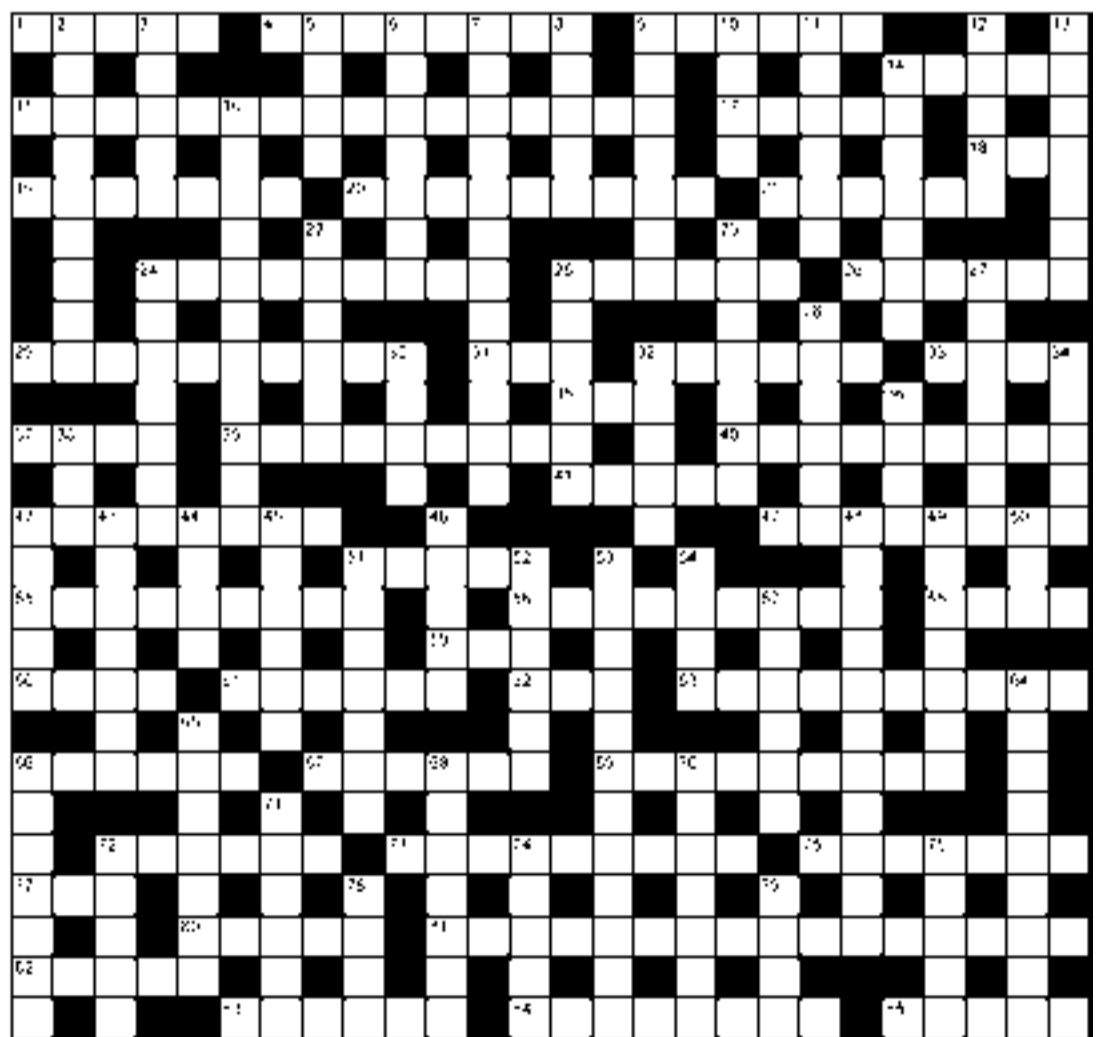
105

ACROSS

- 1 Speak derisively (5)
- 4 Water tortoise (8)
- 9 Hair cutter (6)
- 14 Cavalry sword (5)
- 15 Overwhelming election win (9,7)
- 17 Courage (5)
- 18 Colouring agent (3)
- 19 Brief communication (7)
- 20 Law enforcer's four-legged assistant (6,3)
- 21 Heavy downpour (6)
- 24 Remaining alive (9)
- 25 Writer (6)
- 26 Ship (6)
- 29 Not anticipated (10)
- 31 Noisy quarrel (3)
- 32 Follow secretly (6)
- 33 Open pastry (4)
- 35 Play division (3)
- 37 Buckle out of shape (4)
- 39 Military unit with big guns (9)
- 40 Rash, impetuous (9)
- 41 Cleave (5)
- 42 Trend, inclination (8)
- 47 Gemstone (8)
- 51 Steam bath (5)
- 55 Celebrity's signature (9)
- 56 Theatre (9)
- 58 Heavy volume (4)
- 59 Friend (3)
- 60 Beer ingredient (4)

- 61 Expensive (6)
 - 62 Not at home (3)
 - 63 Early piano-like instrument (10)
 - 66 Monotony (6)
 - 67 Residential area (6)
 - 69 Willing to obey (9)
 - 72 Tufted cord end (6)
 - 73 Many-legged creature (9)
 - 75 Dropped in rank (7)
 - 77 Armed conflict (3)
 - 80 Japanese city (5)
 - 81 Surrender (4,3,5,4)
 - 82 Privileged group (5)
 - 83 Imaginary (6)
 - 84 Fairground stall (8)
 - 85 Basket for fish (5)
- DOWN**
- 2 Colour-changing lizard (9)
 - 3 Loses colour (5)
 - 5 Small whirlpool (4)
 - 6 Pasta meal (7)
 - 7 Hierarchy (7,5)
 - 8 Rope loop (5)
 - 9 Refuse to do business with (7)
 - 10 Skating area (4)
 - 11 Gained by work (6)
 - 12 Residence (5)
 - 13 Army commander (7)
 - 14 Made fast (7)
 - 16 Sleight of hand (11)
 - 22 Divide into two parts (6)
 - 23 Live together (7)
 - 24 Bent down (7)
 - 25 Eternally (6)

- 27 African language (7)
- 28 Fairground game (6)
- 30 River through Egypt (4)
- 32 Musty (5)
- 34 Subject matter (5)
- 36 Turn over (4)
- 38 Mimic (3)
- 42 Help to learn (5)
- 43 Jotter (7)
- 44 Slight advantage (4)
- 45 Waxy colouring stick (6)
- 46 Easily startled (5)
- 48 Plight (11)
- 49 Short-handled axe (7)
- 50 Alcoholic drink (3)
- 51 Double-barrelled firearm (7)
- 52 Poise (6)
- 53 Took part (12)
- 54 Fashionable (4)
- 57 Incapable (6)
- 64 Say again or repeatedly (9)
- 65 Beat rhythmically (7)
- 66 Fishing boat (7)
- 68 Tool (7)
- 70 Infuriates (7)
- 71 Calculate (6)
- 72 Characteristic (5)
- 74 Sounds horn (5)
- 76 Bid (5)
- 78 Nucleus (4)
- 79 American state (4)



PREVIOUS SOLUTION

ACROSS: 1 Run out of steam, 8 Orders, 14 Sewer, 15 Baritone, 16 Keeping, 17 Comet, 18 Tun, 19 Basenji, 21 Statement, 22 Gnomes, 25 Depreciate, 27 Contains, 28 Jetsam, 31 Rebuff, 33 Helpful, 34 Meagre, 35 Onus, 37 Ice, 39 Gobi, 40 Outcome, 41 Gruelling, 42 Engrave, 43 Hypnotic, 48 Pamphlet, 52 Gourmet, 56 Beekeeper, 57 Highest, 58 Lobs, 59 Per, 60 Year, 61 Misery, 62 Chassis, 63 Outcry, 65 Skewer, 66 Bequeath, 68 Nincompoop, 71 Sister, 72 Bride-to-be, 74 Reached, 76 Out, 79 Daisy, 80 Gastric, 81 Nautical, 83 Abate, 84 Deceit, 85 Worn to a shadow.

DOWN: 2 Unaware, 3 Olive, 4 Too, 5 Feel, 6 Take the floor, 7 Adept, 8 Organza, 9 Deck, 10 Remind, 11 Swots, 12 Uranium, 13 Dismantling, 14 Stymied, 20 Jack Frost, 23 Pathetic, 24 Enlarge, 26 Reunion, 27 Coffee, 29 Sundial, 30 Trauma, 32 Ebony, 34 Medal, 36 Sight, 38 Clap, 43 Hobby, 44 Preface, 45 Over, 46 Impair, 47 Bumpy, 48 Pheasant, 49 Metronome, 50 Hilltop, 51 Ember, 52 Greeted, 53 Merchandise, 54 Thrash, 55 Eggs and bacon, 64 Seaside, 65 Samovar, 67 Upright, 69 Oregano, 70 Decide, 71 Stray, 73 Torso, 75 China, 77 Type, 78 Undo, 82 Ups.

WHYTELINE

OUR PRE-OWNED PICKS

2020 Ford Ranger Raptor 4WD

2.0L Bi Turbo DIESEL AUTOMATIC



FINANCE AVAILABLE TRADE-INS WELCOME **\$69,990**

2015 Holden Colorado Z71 DC 4WD

2.0L DIESEL MANUAL



FINANCE AVAILABLE TRADE-INS WELCOME **\$33,995**

2010 Volkswagen Golf Type R

2.0L TURBO PETROL AUTOMATIC



FINANCE AVAILABLE TRADE-INS WELCOME **\$21,995**

2015 Suzuki Celerio GLXC

1.0L PETROL AUTOMATIC ONE OWNER, LOW KMS



FINANCE AVAILABLE TRADE-INS WELCOME **\$10,990**

2018 Isuzu D-Max LS DC 2WD

3.0L DIESEL AUTOMATIC



FINANCE AVAILABLE TRADE-INS WELCOME **\$35,990**

2015 Holden Commodore VF SV6

3.6L AUTOMATIC PETROL HARD LID AND DECK LINER



FINANCE AVAILABLE TRADE-INS WELCOME **\$38,990**

2022 Suzuki Swift Sport

1.4L TURBO PETROL AUTOMATIC



DEMO SPECIAL!

FINANCE AVAILABLE TRADE-INS WELCOME **\$29,990**

2020 Suzuki Vitara Turbo 2WD

1.4L TURBO PETROL AUTOMATIC



FINANCE AVAILABLE TRADE-INS WELCOME **\$28,990**

GET 4.95% FINANCE ON SELECTED BETA AT WHYTELINE!

2022



200 RR

NOW \$13,595.00
SAVE \$1000.00

GET 4.95% FINANCE OVER 24 MONTHS WHEN YOU PAY A 30% DEPOSIT

On payment of on-road costs to the Dealer, finance payments include a \$305 documentation fee and \$10.35 PPSR fee. Offer available to 31st December 2022. UDC Finance lending and credit criteria apply. Excludes demo vehicles and all other promotions.

2022



300 RR

NOW \$14,895.00
SAVE \$1000.00

GET 4.95% FINANCE OVER 24 MONTHS WHEN YOU PAY A 30% DEPOSIT

On payment of on-road costs to the Dealer, finance payments include a \$305 documentation fee and \$10.35 PPSR fee. Offer available to 31st December 2022. UDC Finance lending and credit criteria apply. Excludes demo vehicles and all other promotions.

2022



250 RR

NOW \$14,295.00
SAVE \$1000.00

GET 4.95% FINANCE OVER 24 MONTHS WHEN YOU PAY A 30% DEPOSIT

On payment of on-road costs to the Dealer, finance payments include a \$305 documentation fee and \$10.35 PPSR fee. Offer available to 31st December 2022. UDC Finance lending and credit criteria apply. Excludes demo vehicles and all other promotions.

2022



200 RACING EDITION

NOW \$15,011.00
SAVE \$1000.00

GET 4.95% FINANCE OVER 24 MONTHS WHEN YOU PAY A 30% DEPOSIT

On payment of on-road costs to the Dealer, finance payments include a \$305 documentation fee and \$10.35 PPSR fee. Offer available to 31st December 2022. UDC Finance lending and credit criteria apply. Excludes demo vehicles and all other promotions.

WAIKATO'S HOME OF **Beta** motorcycles

WHYTELINE.CO.NZ | 39 PUKE ROAD, PAEROA | 07 862 8783

HAURAKI'S HOME OF





Trouble Sleeping?

Getting the perfect night's sleep can make or break your day. Poor sleep can put you at risk for serious health conditions.

While hard beds were touted 30 years ago as being best for sleep, the latest research is beds need to support your body shape and position.

And for those of us who have a few miles on the clock – and feeling a bit of wear and tear, but who are still keen to be as active and fit as possible, a good bed is a necessity.

That's where Perfect Fit Beds by Bambillo have come into their own.

It's a well known and respected brand going from the early sales of more than a million pillows between New Zealand and Australia, then the much-loved mattress toppers that will turn any hard bed into an acceptable soft one, to their piece-de-resistance, the Perfect Fit Adjustable Massage Bed.

"There's no doubt this bed is of the highest quality - yet we offer it for much, much less than the apples for apples bed range that's out there," Burt Turner Brand Developers spokesman says.

The bed features a new massage system which Burt says from personal experience works a treat. "I've got a hill block in Banks Peninsula. I know what my body thinks of me after a day hauling firewood down. That Microcirculator Boosters do wonders

for me and I look forward to it at the end of the day." The Microcirculator Boosters has 15 medical massage motors, one for every 20 centimeters of body. There are twenty different treatments to suit whatever the body might need. So whether you need help relieving back pain, aid muscle recovery or boost circulation the Microcirculator Boosters treatments are there to help.

"In the equine world this kind technology is being worked into horse blankets, so race horses and show jumpers all over the world are known to get great benefit from them," Burt says.

As is usually the way, horses – with their huge monetary value in terms of top performers - are often the recipient of groundbreaking technology to keep them at optimal health – and now that technology is something humans can benefit from too, he says.

"You will not find this technology in any other bed in New Zealand. Other

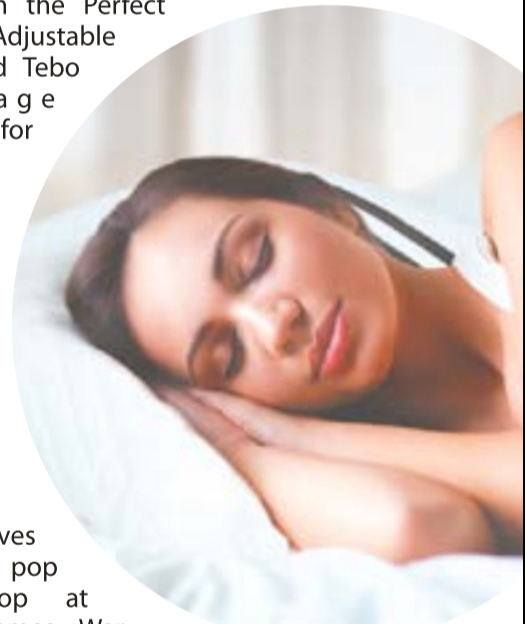
beds claim to have massage built in when in reality they are two small vibrational motors in the base that you can barely feel. There is simply no comparison to the Microcirculation Boosters built into the mattress," Burt said.

"It's a strong, sturdy bed and base which comes in split super king, split queen, one piece queen, king single and long single.

"It has a full 28cm mattress, so that tells you of the

quality factor right there. It's not a lightweight ensemble."

Burt invites people to come in and try both the Perfect Fit Adjustable Bed and Tebo Massage Chair for



themselves at the pop up shop at the Thames War Memorial Civic Centre for 3 days only.

"It's the perfect opportunity to see how well these can become a necessary and welcome part of your life," Burt says.

"Sit on it, lie on it, try the massage options and ask any questions of my expert team, they will be more than happy to make sure you are fully informed."

"This Friday to Sunday is the perfect time to experience the Perfect Fit Bed"

★★★★★ Crezette | Perfect Fit Bed Customer

" Had my Bambillo Bed for 12 months now and I still love it. This bed has changed my life. After more than fifty years I am able to drop off to sleep after couple of minutes after I adjust my bed for that night. After more than fifty years I have a bed that allows me the maximum sleep. "

3 Days Only Thames War Memorial Civic Centre | 3 - 5 February

ADVERTISEMENT

Trouble Sleeping?

Got Back Pain? Neck Pain?

// ★★★★★ Wayne R. | Perfect Fit Bed Customer //
Magic!! What a great bed. Sleep like a log in this. So comfortable and relaxing, also great that we have individual set-up for ourselves.

Exclusive Roadshow Only Offers*

**THIS
WEEK
3 DAYS
ONLY**

Perfect Fit 
by Bambillo



- New Microcirculator Boosters
- Fully Adjustable Height
- Split Bed Options

Thames War Memorial Civic Centre

200 Mary Street, Thames, 3500

Friday 3 February 10am - 5pm

Saturday 4 February 10am - 5pm

Sunday 5 February 10am - 5pm

* Exclusive roadshow offers applies to Perfect Fit Beds only. Perfect Fit Bedframe and Headboard can be purchased separately and is not included with bed. Offers not available online or through the call centre. Only available at Thames War Memorial Civic Centre 3 - 5 February 2023. Delivery and installations fees apply for the Perfect Fit Bed, and/or Perfect Fit Bedframe and Headboard.