

The Valley Profile

ISSN 2703-5700

PUBLISHED EVERY WEDNESDAY

THIS SPACE NOW AVAILABLE
Contact Nikki today
Phone
022 130 3885
or Email:
nikki@valleyprofile.co.nz

Issue 044 November 03, 2021

Gin distillery bears fruit

By TERESA RAMSEY

A few years ago, Daniela Suess and Paul Schneider knew nothing about distilling gin.

Now, despite starting their business during the Covid-19 pandemic, they've taken their Coromandel Distilling Company micro-distillery in Thames to the international stage, and last week won both the Manufacturing and Trade and Supreme Awards at the Hauraki-Coromandel Business Awards.

Paul said they didn't expect to win the Supreme award, which was announced at a gala evening at Grand Mercure Puka Park Resort in Pauanui on October 28.

"We always set out to give it our best but you never know what comes really, so this is a really beautiful surprise for us," he said.

"It's shown us what we've been trying to build over the past two years especially is something that has integrity and quality and stands on its feet.

"All that effort and love and passion is beginning to bear fruit."

The couple are "entirely self-taught" when it comes to hand-crafting their Awildian gin, but their passion for the spirit with its Coromandel flavour has already won them multiple international awards - most recently, silver at the World Spirit Awards in San Francisco and the International Wine and Spirits Awards in London, the longest-standing spirits awards in the world.

"That's when we realised that



Daniela Suess and Paul Schneider from the Coromandel Distilling Company won the Supreme Award, with Brett Rhind, centre, from sponsor BNZ.

Photo: ANITA PITU FOR SNAP CLICK

we actually have the potential to put the Coromandel on to the map of distillation and fine gins," Paul said.

"We certainly continue to learn but we're also increasingly confident to show what we have and what we can make, and show the pride behind running this business in Thames and on the Coromandel."

However, the journey so far had been tough, Daniela said.

"We started out in Covid

times so we never had any tourists, it was pretty much Covid straight away... it's not the greatest timing to start a new business but the community and the locals were so embracing and so supportive.

"They gave us great feedback because the first year was all about experimenting, trying the gins. They gave us great direction... in that way the community was great."

The couple started building

their distillery in 2017, tucked away at the Depot in historic Grahamstown.

"The building had to be built from scratch and comply with, I think, seven Acts so all that needed to be navigated and we're new to the industry so the learning curve was probably more vertical than it was a curve," Paul said.

Now, Coromandel Distilling Company gin is distributed around the country.

Their latest creation, a Christmas gin unique to the Coromandel Peninsula that has already won an award in London, will be released within the next couple of weeks.

"We have just held back with releasing it because we wanted to make it a Christmas gin," Paul said.

"It has huge provenance, it really celebrates the Coromandel from beginning to end."

AWARD WINNERS, P6



Savour & Spice

◆ INSPIRED BY FLAVOUR ◆

Beautiful Christmas treats in store now

www.savourandspice.com

The Depot, Pollen St

Thames

Need a rubbish bin?

With a range of size options - we've got you covered!



PHONE 0800 4 MY BIN (0800 469 246)

EMAIL sales@smartbins.co.nz

ONLINE www.smartbins.co.nz



WE ARE LOCAL - proudly 100% Kiwi owned & operated



CONTACT US

The *Valley Profile* is a community newspaper that delivers 100% local news in the Thames Valley region. We deliver 12,500 copies each Wednesday to every letterbox, reaching approximately 30,000 readers in Hauraki Plains, Paeroa, Thames, Thames Coast and surrounding rural areas, plus bulk distribution around the Coromandel Peninsula.

NEWS/EDITORIAL

Editor Teresa Ramsey
Ph 0204 0944 853
Email: editor@valleyprofile.co.nz

Reporter Kelley Tantau

Ph 022 619 4889
Email: kelley@valleyprofile.co.nz

ADVERTISING

Ad manager Nikki Sanders
Ph 022 1303 885
Email: nikki@valleyprofile.co.nz

MISSED PAPERS/ADMIN

Ph 027 396 2459
Email: admin@valleyprofile.co.nz

100% LOCALLY OWNED AND OPERATED

PO Box 550, Thames 3540
www.valleyprofile.co.nz

Hi, my name is Pete the Pukeko and I'm here to help you. Find me in one of the display advertisements in *The Valley Profile*, then email admin@valleyprofile.co.nz or Ph/txt 027 396 2459 with your full name, the business name and page number of the ad by the following Monday to go in the draw to **WIN a car valet from Thames Autos worth \$150!** The prize is drawn at the end of each month.



Mandate 'no real surprise'

By KELLEY TANTAU

Hauraki's Mayor says the government's decision to push ahead with its Three Waters reform is "a tough one to swallow", after watching the outcome live around the council chambers.

Hauraki District Council's October 27 meeting was put on pause when Local Government Minister Nanaia Mahuta announced the government would legislate to create four publicly owned water entities, thus taking control of water services and assets from local councils.

In September, a letter authored by Mayor Adams and sent to the government questioned any flow-on effects of the reform.

He was concerned the proposed model would result in smaller councils' voices being lost, which was "unacceptable".

However, Minister Mahuta said councils could not ignore the "substantial" benefits of the reform.

She said was not "going to throw the baby out with the bathwater" just because it was a hard, and potentially unpopular, issue.

At the meeting, Mayor Adams told councillors the decision, which would see central government take over the country's drinking water, wastewater and stormwater assets currently owned and operated by 67 councils nationwide, was "no real surprise".



The government has announced it will create four publicly-owned water entities, taking control from local councils.

Photo: PIXABAY

"It was clear from the start when they got elected into government, that they were going to make the changes they deemed necessary," he said.

"It's kinda good and it's kinda bad."

Mayor Adams said the issue had caused "a huge rift" within local government; however, "bagging the crap" out of decision-makers would not stand council in good stead in the long-run.

"We're in a position now where we need to be able to fight to get the best for our community, and the only way we're going to do that is to get inside the tent," he said.

"I think we're inside the tent, and hopefully we can ensure that whatever comes out of this is that our community gets all our needs met."

But Plains ward councillor Ray Broad said "accepting the crumbs" was like "living on your knees".

"I don't go for that," he said.

"I'm just disgusted at how we've been treated over this. It's distressing for the community and that's why I can't support it... If it comes to it, I'll still act in the best interests of my community, so don't think I'm going to give up."

Work is now underway to establish a working group of local government, Iwi, and water industry experts to work through elements of entity design.

According to the government, the group will look at the governance and accountability arrangements of the entities, as well as provide an opportunity for public participation and consultation.

TCDC urged to 'seriously consider' vaccination

By KELLEY TANTAU

A Thames-Coromandel district councillor has called on his colleagues to "categorically support" the government's vaccination programme - a motion that passed unanimously last week.

Coromandel ward councillor John Morrissey put forward a motion to the October 26 meeting that recommended all elected members and staff, whether it was mandated or not, should seriously consider being vaccinated in line with the Ministry of Health's advice, unless there were health reasons for an exemption.

The motion was seconded by South East ward councillor Terry Walker and was passed unanimously, without discussion.

It comes after Thames-Coromandel Mayor Sandra Goudie said she was waiting for an alternative to the current Pfizer vaccine before getting her Covid-19 jab.

She earlier told *The Profile* it was a "calculated risk" to wait for the Novavax vaccine, which was still awaiting Medsafe approval, but said she was "not saying no" to vaccinations.

COURTNEYS' Christmas Tree Farm & Decoration Barn

It's not Christmas without a real Courtneys' Christmas tree!

- November 6th and 7th 9am - 4pm
- Daily from 13th November onward open from 9-6 weekdays and 9-7 weekends
- Eftpos Available
- Masks, sanitising, social distancing and QR codes all apply.

Courtneys' Christmas Tree Farm and Decoration Barn
40 Puriri Valley Rd, Puriri
868 6064 or 027 458 9878

Is your gear up to scratch?

- Dive bottle fills
- Cylinder and gear testing station
- New equipment & spare parts

READ BROS.

EST. 1867 Hardware

COME SEE US for the Latest in Diving Essentials.

Also stockist of quality Marine & Camping products!

SEE MORE AT
www.readbros.co.nz
308 Pollen St, Thames
07 868 6608

Chartered Accountants

The Hauraki Taxation Service Limited

- For out of town independent accounting advice
- Established 1982
- Approved agents for Inland Revenue Department
- Offices in Thames & Coromandel Town

328 Pollen Street, Thames
Ph/Fax: 07 868-9710
E:thames@haurakitaxation.co.nz

95 Kapanga Rd, Coromandel
Ph/Fax: 07 866-8660
E:coro@haurakitaxation.co.nz

Thames Tides

Wed Nov 3	Thu Nov 4	Fri Nov 5	Sat Nov 6	Sun Nov 7	Mon Nov 8	Tue Nov 9
Morning: 6:18am 3.3 Afternoon: 12:25pm 0.7 6:31pm 3.5	Morning: 6:12am 0.6 Afternoon: 1:15pm 0.5 7:12am 3.5 7:22pm 3.6	Morning: 6:08am 0.4 Afternoon: 2:04pm 0.4 8:03am 3.7 8:14pm 3.7	Morning: 6:07am 0.2 Afternoon: 2:52pm 0.3 8:52am 3.8 9:05pm 3.8	Morning: 6:06am 0.2 Afternoon: 3:42pm 0.3 9:41am 3.9 9:57pm 3.8	Morning: 6:05am 0.1 Afternoon: 4:33pm 0.4 10:31am 3.9 10:49pm 3.7	Morning: 6:05am 0.2 Afternoon: 5:26pm 0.5 11:22am 3.8 11:43pm 3.6
6:10am 7:53pm	6:09am 7:54pm	6:08am 7:55pm	6:07am 7:56pm	6:06am 7:57pm	6:05am 7:58pm	6:05am 7:59pm
Best At: 11:25am 11:50pm	Best At: 12:16pm	Best At: 12:42am 1:10pm	Best At: 1:38am 2:08pm	Best At: 2:38am 3:09pm	Best At: 3:41am 4:13pm	Best At: 4:45am 5:17pm
Rise: 5:13am Set: 5:48pm	Rise: 5:43am Set: 7:01pm	New Moon Rise: 6:15am Set: 8:16pm	Rise: 6:53am Set: 9:32pm	Rise: 7:37am Set: 10:48pm	Rise: 8:30am Set: 11:57pm	Rise: 9:31am

*Not for navigational purposes. Graphic supplied by OceanFun Publishing Ltd. www.tidewiz.com www.tidespy.com www.ofu.co.nz

MOON AND FISH KEYS
 New Moon First Quarter Full Moon Last Quarter
 G Good Fishing B Fair Fishing F Not So Good

TIME DIFFERENCES FOR OTHER PLACES
 To determine tide times at the following places, add (+) or subtract (-) the given time difference from the Thames times listed in the calendar.

PLACE	Hr	Min	LOW	Hr	Min
Coromandel	-	0	05	-	0
Whitianga	-	0	02	-	0
Tairua	+	0	10	+	0
Whangamata	-	0	07	-	0
Waihi Beach	-	0	12	-	0

Covid-19 cancels Christmas parades

By KELLEY TANTAU

The Thames Business Association is “heartbroken” after having to cancel its annual Santa parade due to Covid-19 uncertainty.

It follows in the footsteps of Paeroa’s parade, which has also been called off while the country continues to work to a 90 per cent vaccination target set by the government, while Ngatea hopes to press on with their parade at this stage.

Thames’ parade was scheduled for December 10, and this year, was to be run in partnership with Thames South School. The parade route was going to be reversed, with festivities ending at the school on Rolleston St.

There were also going to be pre-parade workshops on float design.

“We had big plans... and it breaks my heart actually,” business association chief executive Sue Lewis O’Halloran said.

“The school board can’t take the risk, and I don’t want to do the parade without working with them. We put so much into it.”

Sue said there were still unknowns about the government’s recently-announced ‘traffic light’ system which would eventually replace existing Covid-19 alert levels.

If the district did move into a more flexible way of life on December 1, that still wouldn’t allow enough time for planning



The Thames Santa Dash fundraiser will not go ahead this year, along with Thames and Paeroa Santa parades.

File Photo: KELLEY TANTAU

or building floats, she said.

“I desperately want to do the parade and I do think we need something to cheer us up, but we cannot be the ones to bring Covid to this community.”

The Santa Dash, a sprint down Pollen St by competitors dressed as Santa Claus, acted as a fundraiser for the business association, and will also not be able to go ahead.

Meanwhile, Positive Paeroa,

in a post on social media, said after much discussion, “and with a fair amount of sadness”, it had been decided to cancel the town’s Santa Parade.

“The uncertainty that Covid brings really does make it impossible to proceed this year.

“The organising committee, Positive Paeroa and Paeroa Lions Club, agonized over the decision, but ultimately were left with no other choice,” the

post said.

“We know that you’ll be equally as sad but also understanding of the considerations that led to this decision.”

Ngatea’s Christmas on the Plains Committee member Shannon Stratford told *The Profile* on Monday they would still go ahead with the parade portion of the event if they received a written sign-off from the district council, which they

would contact this week.

The Santa Parade was to take place on December 11 at 2pm, with a route through the town centre to Hauraki Plains College’s outdoor stage, where there would be a Christmas in the Park event.

The latter proved a bit more ‘hairy’ to organise as it was on school grounds, she said.

Communication with the college would be ongoing.

BARISTA COURSE

A coffee a day keeps the grumpy away.

Up skill for summer.



Looking for a summer job? Most businesses would like you to be barista trained

Next course available November 10 & 11.

Call us now to enroll

Level 3 Agriculture spaces available now.

Level 3 Horticulture spaces available now

Valley Education & Training
50 Kopu Road, Kopu, Thames 3578

Tel: 07 8687892

Mob: 027 314 1577

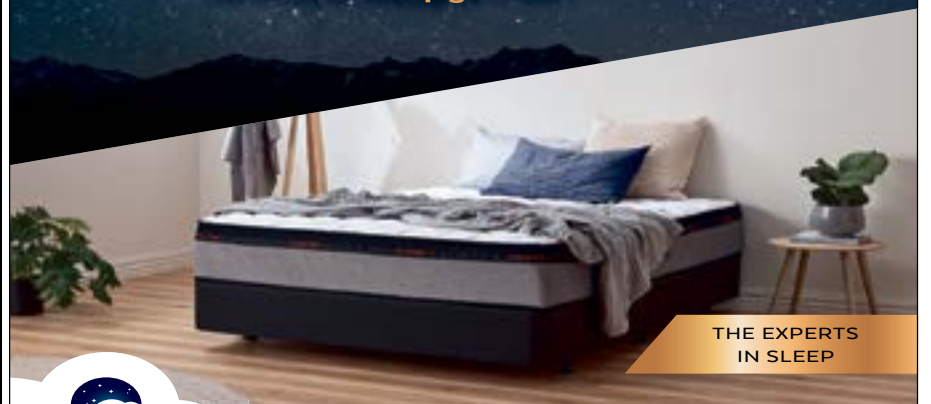
admin@valleyeducation.co.nz

www.valleyeducation.co.nz

FREE courses, FREE transport - no EXCUSES

How big are your dreams?

Dream bigger with half price selected Sleepyhead.



THE EXPERTS IN SLEEP

BedsRus



BAXTERS

FURNITURE & BEDS R US

205 SEALEY ST, THAMES | PH 07 868 6128

Climate change decision faces public verdict

By KELLEY TANTAU

A district council surrounded by coastline is seeking feedback on whether or not its mayor should sign a national climate change declaration.

It comes after an impassioned council meeting back in April, where Thames-Coromandel district councillors debated for 40 minutes before deciding the best course of action to take in signing - or not signing - the Local Government Leaders' Climate Change Declaration.

However, a climate action group has said what counts in this consultation was the council developing a "comprehensive" plan to reduce its greenhouse gas emissions, and then following through on that plan.

Earlier this year, five options were presented to council - the fifth added by Thames councillor Martin Rodley, which stated that council agreed with the guiding principles and action in the declaration and approved the mayor signing it. Council would also continue with its current climate change commitments.

Councillors voted 6-3 to make this option their preferred choice, with Mayor Sandra Goudie and councillors Tony Fox and Murray McLean voting against Cr Rodley's motion.

They are now seeking the public's feedback; however, staff made clear that whatever council's decision was - to approve, or not approve - it would not oblige the mayor to sign the declaration.

Two years ago, Thames-Coromandel District Council decided not to approve its Mayor Sandra Goudie signing the declaration.

Hauraki Coromandel Cli-

mate Action challenged this decision, and following a hearing in the High Court in August 2020, the judge quashed council's decision and directed it to reconsider.

Action group chair Denis Tegg said the biggest item up for consultation was council's preferred option to agree with the guiding principles and actions in the declaration, and continue developing an ambitious climate change work programme.

"In this current consultation, the focus remains on what emission reduction actions the council as a whole will take.

"The mayor has just one vote and whether she agrees to sign the declaration or not is therefore immaterial," he said.

"What counts is the emission reduction actions taken by the council as an organisation."

Mr Tegg said the focus of the action group had always been to ensure council developed a comprehensive plan to reduce its greenhouse gas emissions, and then follow through with specific emission reduction actions.

"This is what neighbouring Hauraki District Council and many other councils have done, but TCDC still doesn't have any plan," he said.

"If, after a strong show of public support, the council confirms its preferred option to take the types of actions set out in the declaration, and the mayor still refuses to sign it, it won't affect the outcome because the council as an organisation will have agreed to take emission reduction actions."

DETAILS: The consultation period runs until 4pm on Friday, November 12. To have your say, email consultation@tcdc.govt.nz or visit the council website: www.tcdc.govt.nz.



Thames MAD's school holiday singing workshop participants performed songs from Broadway hit musicals to showcase what they had learned.

Photo: SUPPLIED

Children enjoy singing workshop

Fifteen young people, aged 6- to 13-years-old, participated in a singing workshop recently.

The 3-day school holiday programme was offered by Thames Music And Drama.

"We have a real commitment to foster the love of theatre in the next generation," Thames Music and Drama (MAD) president Diane Connors said.

"It is important to the long-term sustainability of the group, and forms part of our strategic plan."

The community theatre organisation employs trained facilitators to teach a variety of theatre craft skills - from technical work, acting, movement and singing. The latest involved local singing teacher Tristan Fisher imparting his knowledge around music theory, how to avoid damaging your voice, delivery power through use of your "squidgy bits" and listening to each other.

Tristan inspired the youngsters with tales of his journey so far. In the early days, he first appeared as Freidrich Von Trapp in *The Sound of Music* for Thames Musical Theatre as a child himself.

Within a few years, he was taking lead roles before heading off to study music at university, and eventually becoming a teacher.

However, the group was most impressed with the fact that he had flown to America for a ceremony after a piece he composed for a short animated film was nominated for an award.

"We have a real commitment to foster the love of theatre in the next generation. It is important to the long-term sustainability of the group."

- Diane Connors

He certainly was multi-talented and was a real hit with the rangitahi, Ms Connors said.

The culmination of the workshop was a showcase to their family and friends.

They demonstrated their warm up exercises, their understanding of sheet music and then performed three songs from Broadway hit musicals: *When I Grow Up* from *Matilda*; *Let it Go* from *Frozen* and *Can't Stop the Beat* from *Hair-*

spray.

The students are also very excited to perform these songs again in front of a more "impartial" audience, as they take to the stage next month with an adult ensemble to present Musical Theatre International (MTI)'s *All Together Now!* global event.

All Together Now! is a fundraising concert to celebrate local theatre. MTI, as right holders, have created the revue to help theatres recover after all the challenges of Covid-19.

On the weekend of November 12-14, more than 2400 school and community theatre groups across 44 countries and territories will stage *All Together Now!*

"We often talk about our 'theatre family,'" Ms Connors said, "but this feels even more special. We are connecting with theatre enthusiasts across the globe. In today's environment, where we can feel isolated and alone, it is just wonderful to remember that we're all in this together."

DETAILS: Tickets for the concert are on sale now at www.thamesmad.co.

Cowsheds, Feedpads, Bunker Roofs

Call us to arrange a visit to discuss your needs
Now is the Time to Plan



HOME PASSENGER ELEVATORS • GENERAL ENGINEERING • TRACTOR FORKLIFTS

45 Reta Crescent, Kerepehi

Phone (07) 867-6712

Mobile (0274) 944-948

www.quinn.co.nz Email: info@quinn.co.nz

QUINN
ENGINEERING



**Nick Hoogeveen
& Associates**

CHARTERED ACCOUNTANT

**Business Adviser and Rural Solutions
focused on profit and wealth development**

Nick is in attendance at the Ngatea office every Thursday

Email: office@hoogeveen.co.nz

Ph: 07 862 9090

Website: www.hoogeveen.co.nz

Adviser to Achievers

Luke cleans up by the kilo

Drug paraphernalia, empty alcohol bottles and cans, and around 40kg of discarded fishing gear, mussel buoy ropes and general rubbish are among the items a former Thames man recently found on a clean up endeavour in the region. WINTEC journalism student KATE DURIE finds out more.

A former Thames High teacher's social media call to clean up New Zealand beaches has resulted in hundreds of kilograms of rubbish being collected nationwide.

Luke Macfarlane, who grew up in Thames and now lives in Papamoa, launched the national clean-up operation with his friend Dan Goodwin through their initiative called Fulfilled NZ.

The online movement focuses on creating a national community initiative to clean up beaches, harbours, and local environments.

For the past nine weeks, supporters have been able to show their efforts on a map on their Facebook page, Fulfilled NZ.

So far, they have reported cleaning up to 400 kilometres of coastline, rivers, harbours, bush and other areas, removing 550kgs of litter.

Luke, an avid fisherman and surfer, was visiting family at Waiomu recently when he spotted a lot of fishing material washed ashore.

Luke said there was "quite a bit of fishing material from the mussel farms and from commercial fishing boats".

That spurred him to organise a group to clear rubbish along 9km of coastline from Kuranui Bay, just out of Thames, to Waiomu.

By the time they reached Ngarimu Bay, they had collected 40kg of fishing material and litter.

Earlier, Luke had cleaned



Maurice Battson, left, and Luke MacFarlane with rubbish collected at Ngarimu Bay.

Photos: SUPPLIED

up part of the Kauaeranga Valley with help from friend and artist Krissy Walton, who teaches and creates ceramics from The Clay Shed.

Together with family and friends, they bagged 20kg of waste over a 4km stretch of the Kauaeranga Valley, including empty alcohol cans and drug paraphernalia, he said.

He was then tasked with some early learning conversations with his young children, nieces, and nephews to explain what some of the items they found were.

Finding evidence of drug use was "disappointing to see", he said.

The clean up was a good start, he said.

"It was a good effort, but there is so much more to do,"

he said, "it barely scratched the surface - a lot of rubbish is caught in the rocks and we didn't have a sharp enough knife that day".

Fulfilled NZ is currently developing a web-based platform and app to encourage a nationwide community initiative for people to pick up any rubbish they come across while outdoors.

The app will also allow people to record their efforts and share their experiences through photos and comments.

Eventually, the app will include leader boards and prize packs for different districts and communities.

DETAILS: For more information about the clean-up initiative, go to @fulfillednz on Instagram or find Fulfilled NZ on Facebook.



Krissy Walton next to the rubbish pulled from a 4km stretch of the Kauaeranga Valley.

A1Motorcycles

Servicing and Repairs
Workshop or On Farm
Road, Farm, MotoX

Ph : 027 2166867
Graham Cornes

A Grade Motorcycle Mechanic
graham@a1motorcycles.co.nz

Parts and Accessories
Road, Farm, MotoX

Ph : 027 2166860

Alison Cornes

parts@a1motorcycles.co.nz

www.a1motorcycles.co.nz

Looking for a Lifestyle change?

BUSINESS FOR SALE

100%
LOCALLY
OWNED &
OPERATED

"Want a great work life balance where you can continue to generate great returns and still have time for fishing or that golf game? Or maybe you just want to see the money going into your bank account every week, even when you are on holiday?"

Just Cabins Hauraki is now available for an astute buyer to take advantage of a business that has a huge demand that is increasing every year.

You will be investing in a turnkey business that is already up and running and generating a regular monthly income.

There is no other business that really gives you the opportunity to earn regular recurring income while maintaining a great lifestyle.



JUST
CABINS
RENT A ROOM

To find out more about this business, email us at sales@justcabins.co.nz or check out our website at justcabins.co.nz/franchisee for more details.

JUSTCABINS.CO.NZ/FRANCHISEE

Local businesses celebrated at gala event

By TERESA RAMSEY

Businesses were celebrated at Hauraki-Coromandel's business awards gala event in Pauanui last week.

A restricted number of finalists under Covid-19 regulations were treated to a three-course meal and guest speakers during the event, which saw Coromandel Distilling Company take out the top honour (story P1).

The ceremony opened with comments from Hauraki Mayor Toby Adams and Thames-Coromandel Deputy Mayor Murray McLean, who took a friendly jab at Mayor Sandra Goudie over her refusal of the Pfizer vaccine.

"Let me offer an apology for Mayor Sandra. She said tonight she couldn't come and I've been wondering [why] but someone whispered today she's off to get a Covid injection," he joked.

"But seriously, TCDC is very pleased they can support these awards, small business ... is the basis of our community. The contributions businesses make in our community is truly tremendous."

The headline speaker on the night was Annah Stretton, one of the country's most successful business women and Waikato and Coromandel resident, who talked about her latest philanthropic ventures. This included RAW (Reclaim Another Woman), a charity that helps break the cycle of intergenerational offending, educational underachievement, persistent poverty and violence for a group of disadvantaged women.



AWARD WINNERS, left to right from top: Manufacturing & Trade and Supreme awards: Coromandel Distilling Company Ltd; Retail and Emerging business awards: Coastal Bins; Community & Not For Profit: Te Whariki Manawahine O Hauraki; Hauraki Women's Refuge; Hospitality: Gastronomics Restaurant & Bar; Tourism: Cathedral Cove Kayaks, with a special commendation for Historical Maritime Park & Museum; Rural & Primary Industries: Splinta's Firewood; Service to Business: Jo Tilsley; Professional Services: Woof Woof Ranch, and People's Choice awards: Maddcuttz. Photos: ANITA PITU FOR SNAP CLICK

chievement, persistent poverty and violence for a group of disadvantaged women.

Coromandel MP Scott Simpson closed the awards ceremony, congratulating the award winners who he said demonstrated "all that is the best in

enterprise, endeavour and initiative" in difficult times.

"Nothing gives me more pride as Coromandel Member of Parliament about when I hear from people in other parts of the country who have been to our region and tell me about

some of the wonderful businesses that they've interacted with," he said.

"We haven't had enough of those people visiting us over the last year or so.

"It's been tough, it's been hard, but it's been I think hope-

fully a character building exercise for businesses and I hope that when we come out of the dramas that we are currently in, we will come out of it stronger, better, more nimble and more welcoming even of more visitors to our region."

NO TIME TO Waste

Tiakina a Papa! Mimiti te Para!

Where will this newspaper end up?*
The choice is yours.

Today's a good time to think about the waste we generate, and where it goes after we're done with it.

We're proposing some changes to the way we manage and reduce waste, and we want your feedback.

We've made a plan for our goals, objectives, and how we'll achieve our vision of "Towards zero waste together. Hauraki – our home our future"

Have your say by 4pm, 22 November 2021

* you could either pop this paper in your compost bin or worm farm (rip it up first), or recycle it in kerbside collection or at one of our transfer stations.

Big changes could be coming your way...

- Swapping yellow bags for a landfill wheelie bin
- Collecting food waste separately
- More bins for separating your recycling
- More education on ways to be a zero waste warrior
- Less contamination of recycling bins
- Providing more houses and businesses in the district with a kerbside rubbish and recycling collection
- Supporting the Hauraki Repair and Reuse Centre
- Running a 12 month trial of public recycling bins around the district

Which means

It'll be easier and more convenient for you to separate out waste, so more recycling is useable and less rubbish goes to landfill. Now that's good for Papatūānuku too.

Your feedback will help us plan for the future!

We've considered various options for our kerbside collection into the future, and we want your feedback on which option/s you'd prefer.

scan me to find out more and how to have your say, or visit <https://weneedtotalk.hauraki-dc.govt.nz/no-time-to-waste> phone 07 862 8609 or 0800 734 834 (within the district) email info@hauraki-dc.govt.nz post PO Box 17, Paeroa 3640

Ag day antics

It was a full-on week for calf club competitors and their families throughout Hauraki last week. Waitakaruru School and Ngatea Primary were two of many to hold their annual agriculture days, with goats, lambs and calves strutting their stuff in the show ring. **MORE PHOTOS: P8**



Blake King leads his calf Cuddly.

Photo: SUPPLIED/NGATEA SCHOOL



The winner of a leading class at Waitakaruru School.

Photo: BEV'S CRACKING SHOTS



Leading around the standard can be tricky.

Photo: BEV'S CRACKING SHOTS



Brock Stephens and Ben Webster.

Photo: SUPPLIED/NGATEA SCHOOL



Third prize in the lamb ring for this Waitakaruru School competitor.

Photo: BEV'S CRACKING SHOTS

Thames Autos



A Division of Takarini Motors Ltd

R.M.V.T.



HOME DEMONSTRATIONS AND DELIVERIES AVAILABLE WE CAN COME TO YOU



www.thamesautos.co.nz

2013 Ford Mondeo

2.3 Ltr Auto, Good Kms, Immaculate Condition



\$9,990

2006 Mazda Axela

1.5 Ltr Auto, Top Condition & Economical



\$6,990

2013 Ford Mondeo

Auto, Diesel, Alloys, Etc, Great Value Buy



\$8,990

2014 Ford Fiesta

Auto Turbo, Immac Condition, 106km



Now Just \$13,990

2012 Volvo V5 S/Wag

2.0 Ltr Auto, Low Kms, New Shape



\$13,990

2009 Mazda Axela

Auto, 1.5 Ltr, Low kms, Smart Car



\$11,990

2005 Holden Barina

5 Spd Manual, 69kms, Mint Car



\$6,990

2016 Kia Rio

1.4 Auto, One Owner, 36 kms, Like New



\$15,990

LEYLAND STOWE

Mob: 027 355 5152 Ph: 07 868 8981

or 0800 868 898

609 Pollen St, Thames RMVT
thamesautos@xtra.co.nz



No Deposit Finance available on all vehicles. Full workshop servicing & repairs available including Auto Electrical service



Cousins Harriot Hitchcock and Zoe Williams with their Molly and Snowball.



Lily Hammond with lamb Buddy and Sean Stephens with lamb Fluffy in the ring. Photos: SUPPLIED/NGATEA SCHOOL



Chloe Sargent gives her calf Ellie some love.



Levi Dowty leads his calf Tank around the ring.



Ruby Flexman and her lamb Blaze.

JOCK MUNRO MOTORS LTD

2002 TOYOTA CAMRY GL

2200cc, 5 speed manual, 2.2P, Sedan, 182,000kms, all extras



\$4,500 **\$3,995**

TOYOTA

2006 TOYOTA CAMRY SPORT BEST \$6,500

2400cc WTi Auto, All Extras, Original

2005 TOYOTA SENTRA \$4,895

5 door S/Wagon, All extras, 1500cc Auto, 7 seater. In white. **VALUE**

2005 TOYOTA EST \$5,995

5 door Hatch, 1500cc Auto. All extras, In silver, Exceptional Condition

2004 TOYOTA ESTIMA \$5,995

158,000kms, 2360cc Auto, All extras, in gold, 7 seats, Best Available

1994 TOYOTA SPRINTER COUPE TRUENO \$2,995

1600cc Auto, CD, C Lock, In red, Top condition \$3,295

DAEWOO

2004 DAEWOO NUBIRA S/WAGON \$3,995

Original in Meatallic Blue, 1600cc Auto, 143,000kms, Good Value \$4,695

203 Walter St Thames Ph 07 868 8635 AH 868 8636

All vehicles sold with new W.O.F. and current rego

Every vehicle must go

ALL VEHICLES REDUCED. MUST GO. ACT NOW!

Call in and discuss a deal. Terms & trade ins.

Every vehicle must go

NISSAN

2008 NISSAN TILDA 5DR HATCHBACK \$7,995

79,000kms, 1500cc Auto, All extras, Original

2003 NISSAN BLUEBIRD SYLPHY \$3,495

1800cc Auto, 232,000kms \$4,260

1992 NISSAN MAXIMA \$2,995

2500cc Auto, Up in Kms, Very tidy in white \$4,260

1999 NISSAN CEFIRO BEST \$3,995

2500cc Auto, 124,000kms, All extras \$4,495

2000 NISSAN SUNNY EX SALOON \$2,495

1500cc Auto, 221,000 kms, NZ New

1997 NISSAN PULSAR RV \$2,745

1500cc Auto, In good tidy condition \$2,975

1996 NISSAN PRIMERA \$2,995

1800cc Auto, CD, Air, 140,000kms, Met. Blue, Top Condition

FORD

1997 FORD FOCUS S/W VALUE \$5,225

Diesel, 1800cc 5 speed, All extras, Met Blue \$5,995

1990 FORD LASER GL \$2,695

5 Door Hatch, 1600cc Auto, 141,000kms \$2,995

1997 FORD LASER A CLASSIC DREAM

2 Door Hatchback, 1600cc Auto, In immaculate unbelievable condition. Same owner for 19 years

HONDA

1995 HONDA ODYSSEY \$1,995

4x4 Auto, 5 Door S/Wagon, 7 Seater \$2,295

1995 HONDA ODYSSEY \$2,895

4WD, 7 Seater, NZ New, 2500cc Auto, CD, Electrics, Up in kms, **VALUE**

2001 HONDA CONCERTO 4DR SEDAN \$2,500

1600cc, 5 speed, Up in kms, Very tidy, drives well \$2,850

2000 HONDA CIVIC \$2,200

1600cc, Auto, 4 Door, CD, Mags \$2,695

2004 HONDA ODYSSEY MAESTRO \$2,995

Tinted windows, Up in kms, Mags, S/wagon, Electrics, **VALUE** \$3,595

MITSUBISHI

1996 MITSUBISHI RVR \$2,995

Tow Bar, Power Steering, **VALUE** \$3,500

1991 MITSUBISHI LANCER GLX \$2,200

1500cc Auto, 154,000kms, CD, Mags \$2,500

2002 MITSUBISHI DIAMANTE \$2,995

2500cc Auto, 185,000kms, Spoiler, All extras \$3,400

2005 MITSUBISHI LANCER \$2,500

4 door, 2000cc Auto, Very tidy, Up in kms \$2,795

2000 MITSUBISHI MIRAGE

DINGO

5 Door S/Wagon, towbar, CD, mags



\$2,995 **\$2,650**

HOLDEN

2008 HOLDEN VIVA BEST AVAILABLE VALUE \$6,995

5 Door Hatch, 1800cc Auto, All extras, 115,000kms, One local lady owner. You won't believe the condition throughout. In Metallic Orange

2007 HOLDEN COMMODORE OMEGA \$6,995

3564cc V6 Auto, 173,500kms, Every extra, \$7,995 Most original, Best available, **VALUE PLUS**

1999 HOLDEN VECTRA \$1,995

2.2L Auto, Sedan, Silver, New rego, New WOF, Original condition \$2,250

1997 HOLDEN VF COMMODORE ACCLAIM \$3,695

3.8L Auto \$4,500

PROJECTS / AS A DO-UP

1997 FORD MONDEO 4 DR, VERY TIDY

Has wiring problems, suit auto electrician **REASONABLE OFFERS**

1999 FORD FALCON AU FUTURA

4000cc Inj, Mags, Elects, Duel Hand Controls, WoF on hold, Paint & rust repairs **REASONABLE OFFERS**

12001 MERCEDES-BENZ AVANT GARDE

5 door hatch, Auto, 161,000kms, New WoF & rego **REASONABLE OFFERS**

Rural Life

Soft plastics destined for fence posts on farm

The soft plastics Paeroa residents can now drop into Countdown will go on to be recycled fence posts to be used on farms and vineyards.

The supermarket has partnered with Paeroa rural business AgriSea for its Soft Plastics Recycling Scheme.

It will involve AgriSea, a business that supplies products made from New Zealand seaweed to the dairy, horticulture, apiculture and viticulture industries, collecting the soft plastics and transporting them to Future Post, a company that turns domestic and commercial plastic waste into fencing products.

"I contacted [scheme manager] Lyn [Mayes], to understand the opportunity for recycling, which then led me to sort and collect our own families' soft plastics, and the amount of plastic waste was quite a surprise," AgriSea managing director Tane Bradley said.

"By separating soft plastics into another box, it reduced my council bin waste by a large amount."

Countdown Paeroa store manager Alice Davidson "jumped at the offer" to see the return of the soft plastics bin.

"We are really excited to be bringing [the scheme] to

Paeroa and giving our customers a way to recycle packaging that might otherwise end up in landfill," she said.

"I know locals will be really pleased to see the return of the bin in our store and it's great to be able to work with a local company like Agrisea to help us do that."

This latest expansion will mean there will be more than 165 locations offering a drop-off service for soft plastic bags and wrappers throughout the country, although collections were currently on hold in Auckland until alert level 3 restrictions eased, she said.

Future Post was founded by Jerome Wenzlick, who attempted to build a fence on an old rubbish dump site.

He found his wooden fence posts were breaking as he tried ramming them through all the waste plastic in the ground, and had the revelation that if he could build a stronger fencepost from waste plastic, he'd also help solve a bigger environmental problem.

Mr Bradley acknowledged creating better recycling habits was a "journey of constant improvement" - from reducing single plastic use, to finding alternatives such as bioplastics, made from natural renewable



AgriSea managing director Tane Bradley and Countdown Paeroa store manager Alice Davidson have teamed up to bring soft plastic recycling back to the town. Photo: SUPPLIED

sources.

"However plastic is currently part of our lives - and the ability to turn this into something useful is a great thing," he said.

"We are 100 per cent behind this programme and look forward to supporting our community."

DETAILS: The Soft Plastic Re-

cycling Scheme is a voluntary product stewardship scheme operated by The Packaging Forum.

Soft Plastics Recycling has been operating since 2015 and is 100 per cent funded by its industry members to capture soft plastic packaging for recycling into new products.

Anything made of soft plastic which can be scrunched into a ball, such as bread bags, toilet paper packaging and squeeze pouches, will be accepted - but it must be clean, empty and dry.

More info can be found online at: www.packagingforum.org.nz.

Hauraki Plains Motors has you covered.

If we haven't got what you are looking for we will try and get it.



Besides farming equipment we have...

- BBQ's • Garden equipment • Push bikes, tyres & accessories • Fishing gear & bait
- Honda outboards • Trailers • A wide range of hand tools & home hardware • Tyres • WoF testing
- Vehicle & boat servicing • Farm equipment repairs... and more



Hauraki Plains Motors

1 Pipiroa Road, Ngatea • Ph 07 867-7021

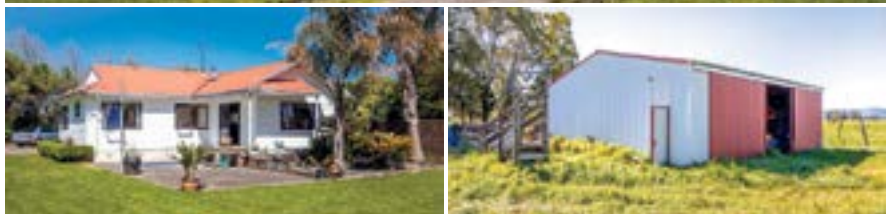
A/Hrs Mike 027 440 4681, Miles 027-227-1121 Email: admin@hpmotors.co.nz



RURAL | LIFESTYLE | RESIDENTIAL



FINAL NOTICE



TURUA 981 Hauraki Road
Dream Country Lifestyle

Desirable 2.89ha property with sunny, private low maintenance home. Open plan living/dining/kitchen with a wet back log burner. Alfresco patio area and deck overlook the attractive landscaped gardens and orchard. Extra space for family, friends, or guests with the double garage/man cave plus self-contained sleep out. Three paddocks and large secure implement shed/barn, loading ramp, pens, and garden sheds. Potential to add value with plenty of room to expand the house, decking, and garaging if required.

4 2 2

AUCTION (Unless Sold Prior)
1.00pm, Friday 12 November
On Site: 981 Hauraki Road, Turua

VIEW
12.00-1.00pm, Saturday 6 November

Emma Muir
M 027 210 1803
E emma.muir@pggwrightson.co.nz



Johan Van de Put
M 021 964 070
E johan.vandepu@pggwrightson.co.nz



pggwre.co.nz/MOR34912

PGG Wrightson Real Estate Limited, licensed under REAA 2008

Helping grow the country



Photo: SUPPLIED/HARCOURTS

Cinema to go under the hammer

By KELLEY TANTAU

Lockdown uncertainty could impact on the sale of Thames' historic cinema, which goes under the hammer later this month.

With border restrictions still in place around the Auckland and Waikato regions, it made it more difficult to deduce how many people would attend the auction of The Embassy Cinema along Thames' main street, Harcourts sales consultant Matt Bowie said.

The iconic cinema will be auctioned off on site on November 18.

"It is quite a big building, and it probably needs a good operator or somebody who is interested in a mixed-use [facility], so either going down a restaurant or cafe route, or a night venue with events and live music and comedy," he said. "It could also be a nightclub, which would be really good for the area, especially if they could do it in conjunction with a late-night bus that could take people home."

The historic cinema on Pollen St was established in 1913, and was developed from a single-screen cinema to a multiplex in 1998. The business had been run by Michelle and Dave Ritchie for two

decades, but in March of this year, the curtain closed on the pair's projectionist careers. The cinema had become a casualty of the Covid-19 pandemic, and there just weren't enough "bums on seats" to make the theatre viable anymore, they earlier told *The Profile*.

Mr Bowie acknowledged the history of the building, and said there was "still hope" for it to remain as a cinema complex. "I've called all the boutique cinemas in the top half of the North Island, so I am doing a lot of work trying to keep it as a cinema, or at least an event space," he said.

"If there is any interest in terms of investment or partial investment, I could put people in touch with others in order to create a bit of a syndicate."


However, with a commercial zoning, the property also had potential to become a hospitality venue, while creating future CBD apartments could also factor into decision-making.

The property has a significant freehold land area of around 658m², and a floor area of around 635m². Some strengthening work has been undertaken, but further "TLC" will be required to get the building back to its former glory.

/Richardsons Paeroa / Ngatea 

/Richardsons Thames 

Paeroa **Offers Over \$530,000**



- 2 bedrooms, good sized lounge with heat pump
- 728m² (more or less) section, views, location
- Vendor will consider all offers on 4 November 21

RG1930

108 Pipiroa Road **Offers Over \$580,000**

NEW LISTING



- 3 double bedrooms, New stove, Great storage
- Heat pump, Insulation underneath
- 3 single garages, 809m² fenced section

RN1397

19/508 Seaforth Rd, Waihi Beach **Auction 21 November | 12pm | On-site (unless sold prior)**

OPEN HOME SUNDAY 11-12PM




Large home in gated area, views of the ocean & harbour. Lower level with garage, room for your boat, lounge/kitchenette, bdrms, bathroom and laundry, great for family. Lift to upper level, open plan living, 2 bdrms, ensuite and bathroom.

RRP221 - KEVIN FATHERS 027 279 9800

Our team approach is a proven formula for over 60 years. We are unique, a team of six agents working for you, not just one!



Now is a great time to see what your home is worth. Get in touch to discuss your options, and let us take the pressure off you in these crazy times.

PAEROA 07 862 7888 54 Belmont Road paeroa@richardsons.co.nz	NGATEA 07 867 7800 33 Orchard Road ngatea@richardsons.co.nz	THAMES 07 868 6978 556 Pollen Street thames@richardsons.co.nz
---	---	---

/Richardsons
Real Estate Ltd MREINZ
Licensed REAA2008

For further properties please visit our website
www.richardsons.co.nz

/Richardsons
Real Estate Ltd MREINZ
Licensed REAA2008

Seaplane delivers mail to Kōpū



As part of a Valley Profile series, **MEGHAN HAWKES** searches through old newspapers to bring you the stories Thames Valley locals once read about themselves.

1920

A seaplane arrived at Kōpū from Auckland on an unofficial visit to spy out the land and water for suitable landing places for the first aerial mail service to Thames.

There was some indignation that the postal authorities had kept the matter quiet and many did not see the plane arrive.

Word had passed by the 'bush telegraph' that the plane was due about twelve and little knots of people gathered on the waterfront. About 12.10 the sea plane was visible flying fairly high, and was in plain view about 10 minutes, when it dropped easily down into the Waihou, running up to the wharf at Kōpū, the average speed of 60 miles per hour being maintained for the journey. The pilot said the machine was a 120 hp 2-float seaplane of American type. The trip down had been very pleasant, and there were no difficulties in the way of a regular seaplane service between Auckland and Thames. The flight between Auckland and Kōpū took



Airmail in Thames.

Photo: SUPPLIED

50 minutes. It was intended to run a regular seaplane service between Thames and Auckland for mail and passengers. The pilot was met by the Mayor, the secretary of the Harbour Board, and board members and was taken to Burke St wharf, and later to Tararu with the object of finding a suitable site for a permanent landing stage.

Around 500 settlers and residents of the Hauraki Plains petitioned the government to reserve an area of about 43 acres, known as the Kerepēhi race-course, for the newly formed Hauraki Plains A and P Association.

Kerepēhi, the venue of the show ground, was situated at the junction of the Awaitei Canal and Piako River. The growing township was on undulating land, and on the highest point for a radius of seven miles.

Kerepēhi was the port of the river steamers and cargo was carried from there to the upper reaches of the Piako by launches and punts. The committee in-

tended to hold a show early in 1921.

Hikutaia, a wayside country happy-go-lucky village, had been settled even before Paeroa, but was in much the same position it had been 40 years previously, except it could now boast an up-to-date stock sale yard and a cheese factory.

Hikutaia possessed the cream of the dairying land of the Thames Valley but no attempt had ever been made to create a township, despite its central situation and flourishing surroundings.

Its outskirts had improved in population by farm settlement, but local settlers appeared to think that a half dozen small business premises was quite enough. However, Hikutaia was one of those small centres that clearly demonstrated the importance of a well-conducted licensed house.

It was an acknowledged fact that it was Mrs Corbett's Pioneer Hotel that kept Hikutaia from sinking into oblivion.



Thames Creative Fibre members, from left: Gail Grieve, Dana Catley, Avril Blake and Kathy Mason. Photo: SUPPLIED

Long-serving Creative Fibre members honoured

Two retiring Thames Creative Fibre members were honoured for their long service recently.

Secretary Lyn Barbour said incoming treasurer Kath Mason and committee member Gail Grieve recently presented bouquets of flowers to retiring and long serving president Dana Catley and treasurer Avril Blake for their long serving commitment to the Thames Creative Fibre group.

"These women have done a sterling job with running spinning, weaving, felting and knitting in Thames for many

years," she said.

The Thames Creative Fibre group meets from 9.30am till 2pm on the first Monday of the month at Parawai Church of Christ Church for an activities day, which includes practical felting, spinning and other activities.

The group also meets on the fourth Monday of month for group day at St James Union Parish Church, cnr Pollen and Pahau Streets, Thames, from 9.30 till 2pm.

Both days bring a lunch, morning tea supplied, cost \$3.

Team Kerry & Adrienne
Experience the Difference

Amy Bustard
REAL ESTATE

Maree Simpson

TRINITY NETWORK
REAL ESTATE
LICENSED REAA (2008)

Price By Negotiation

4
 2
 1
 2

Phone for a Private Viewing

Thames, 15 Puriri Valley Road
www.trinitynetwork.co.nz/15-puriri-valley-road-thames

Asking Price \$290,000

1
 1
 1
 -

Phone for a Private Viewing

Te Puru, 473 Thames Coast Road
www.trinitynetwork.co.nz/473-thames-coast-road-te-puru

Paying it forward

Team Trinity are committed to providing exceptional real estate services. Whether it's helping a Buyer or a Seller, our commitment remains the same – to provide service that exceeds our client's expectations.

We are also committed to our community and helping those in need.

If you work with us to sell your home, we will donate \$1000.00 of our commission to a charity or non-profit organisation of your choice

(including Sports club, education, support services and others) in your name! And there is absolutely no cost to you! So if you would like to show your support for your community the process is easy, we list your property, we sell your property and then we donate \$1000.00 to your chosen charity or non-profit organisation at no cost to you*.

Contact one of the team to discuss.

*T & C's apply.

 Amy Bustard M: 027 262 6177 E: amy.bustard@trinitynetwork.co.nz	 Adrienne Crawford M: 027 298 4114 E: adrienne.crawford@trinitynetwork.co.nz	 Kerry Trainor M: 021 236 5978 E: kerry.trainor@trinitynetwork.co.nz	 Maree Simpson M: 027 206 7616 E: maree.simpson@trinitynetwork.co.nz
--	--	--	--

THAMES VALLEY TANGATA ORA TRUST

The People's Wellbeing Trust



SALES SERVICE HIRE



MOBILITY EQUIPMENT

- Mobility Scooters
- Wheelchairs
- Walkers
- Electric Lift Chairs

We do our best to source other products on request

607 Mackay St, Thames (Opposite the hospital) • Ph: 07 868 7723 or 027 383 1117 • E: tvtot2017@gmail.com
Opening Hours: 10am - 3pm Monday to Friday - After hours by arrangement

JOIN OUR ARTS PAGE

The Valley Profile publishes an arts page every 2nd month. If you are interested in supporting this page, please contact Nikki for more information. There are limited spaces available.

022 130 3885

nikki@valleyprofile.co.nz

Profile

SUDOKU

Fill the grid so every row, every column and every 3x3 box contains the numbers 1-9

		8				3	6	
			9	6	8			
		8	5	1	7			9
6					3	5	9	
	8		2		9		1	
	9	7	6					4
9			1	6	2	4		
		4	7	3				
1	3				8			

EASY

2					8			4
			7		4		2	
		3		1	2		6	
					7		3	
8		2				9		6
	3		9					
	6		1	7		8		
	4		2		3			
5			6					3

MEDIUM

			4			6		1
	4			3				
		1	7	6			3	
		8			2	4		9
4								5
5	6	1				8		
	8			1	7	3		
				5			9	
1	3				8			

HARD

24

9	3	7	4	2	5	6	8	1
6	4	2	8	3	1	9	5	7
8	5	1	7	6	9	2	3	4
3	1	8	5	7	2	4	6	9
4	2	9	3	8	6	7	1	5
5	7	6	1	9	4	8	2	3
2	8	5	9	1	7	3	4	6
7	6	4	2	5	3	1	9	8
1	9	3	6	4	8	5	7	2

HARD

2	9	7	3	6	8	5	1	4
6	1	5	7	9	4	3	2	8
4	8	3	5	1	2	7	6	9
9	5	6	8	2	7	4	3	1
8	7	2	4	3	1	9	5	6
1	3	4	9	5	6	2	8	7
3	6	9	1	7	5	8	4	2
7	4	1	2	8	3	6	9	5
5	2	8	6	4	9	1	7	3

MEDIUM

7	5	9	8	2	4	1	3	6
2	4	1	3	9	6	8	7	5
3	6	8	5	1	7	2	4	9
6	1	2	4	7	3	5	9	8
4	8	3	2	5	9	6	1	7
5	9	7	6	8	1	3	2	4
8	2	4	7	3	5	9	6	1
1	3	6	9	4	8	7	5	2

EASY

Puzzles © The Puzzle Company
www.thepuzzlecompany.co.nz

JUMBO CROSSWORD

44

ACROSS

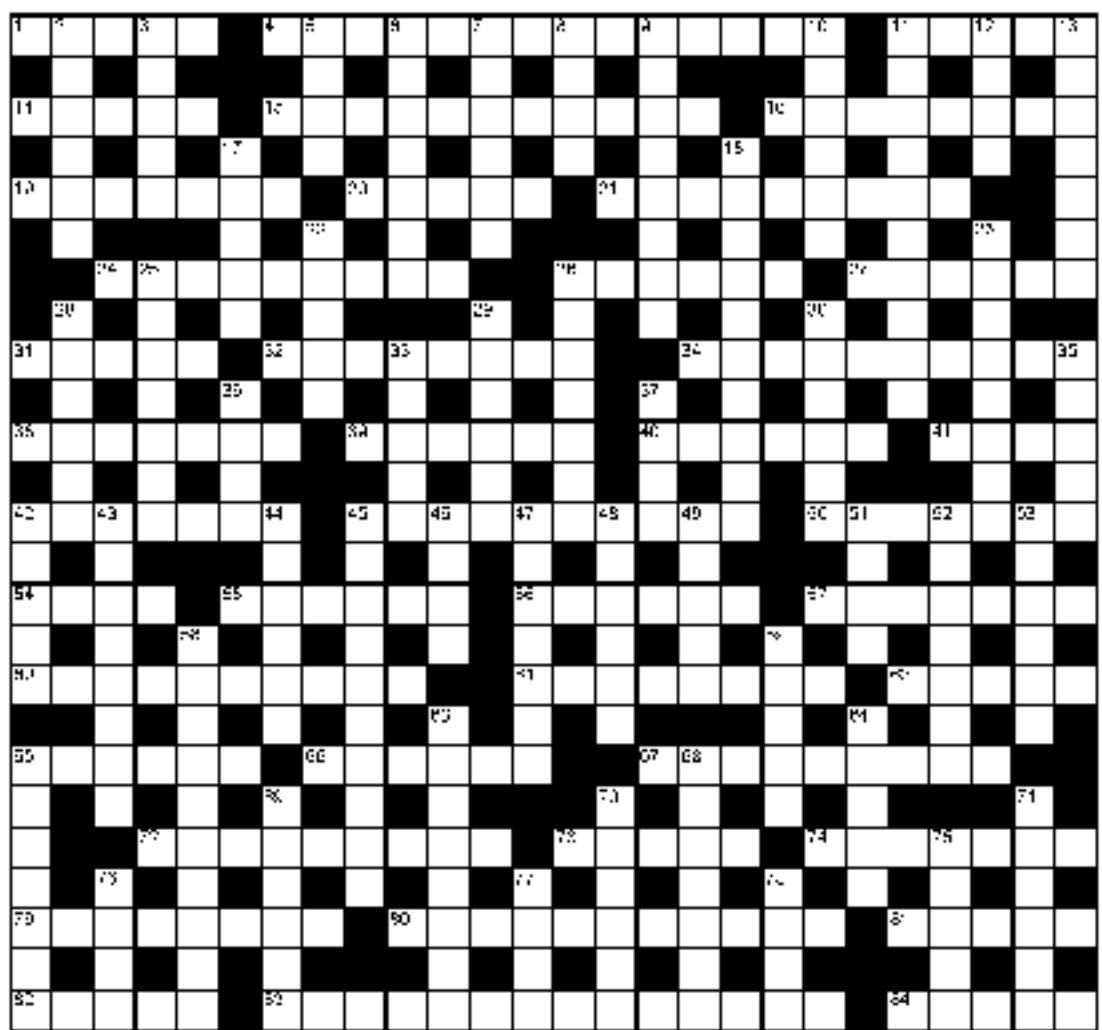
- Decorative (5)
- Make fit after illness or imprisonment (14)
- Thoughts (5)
- Bid (5)
- Meaningless (11)
- Suffocating (8)
- Skull (7)
- Catalogue (5)
- Reproduce (9)
- Dusk (9)
- Prolong (6)
- Danger (6)
- Quietens (5)
- Mind-affecting drug (8)
- Chief rabble-rouse, mutineer (10)
- Passed out (7)
- Reflect (6)
- Shouted (6)
- Complaint (colloq)(4)
- Predicament (7)
- Done with ease (10)
- Percussionist (7)
- Imminent (4)
- Plan (6)
- Against (6)
- European country (7)
- Science and technology of metals (10)
- Trick into an unpleasant task (8)
- Wet (5)
- Compassionate (6)
- Technique (6)
- Kitchen implement (9)

DOWN

- Have sufficient money for (6)
- Dirt-free (5)
- Greek god of love (4)
- Military storehouse (7)
- Requiring help (2,4)
- Part of eye (4)
- Cheerful readiness (8)
- Talk much about little (6)
- Smitten (10)
- Heinous (4)
- Plan (6)
- Japanese dish (5)
- Hints, traces (10)
- Animal organs used as food (5)
- Nightmare (3,5)
- Huge (7)
- Extracted passage (7)
- Hunting expedition (6)
- Home sound system (6)

ACROSS

- Concurred (6)
- Rock face (5)
- Make mention (5)
- Side (4)
- Cow shelter (4)
- Hard-wearing fabric (5)
- Surgical tie (8)
- Gather (6)
- Non-deciduous trees (10)
- Bend (4)
- Swotted up (7)
- Grubs (6)
- Smarted (5)
- Coral bank (4)
- Captain of industry (7)
- Of a horse (6)
- Defamatory (10)
- Thorns (5)
- Ski resort in British Columbia, Canada (8)
- Be equal to (5)
- Inquisitive (7)
- Of the stomach (7)
- Poking one's nose in (6)
- Forsaken (6)
- Comment (6)
- Memorise (5)
- Band of people (4)
- Unit of length (4)
- Aniseed-flavoured spirit (4)



PREVIOUS SOLUTION

ACROSS: 1 Butcher, 4 Stony-broke, 9 Warrant, 13 Lard, 14 United, 15 Defeat, 16 Prowess, 19 Assembling, 20 Initiate, 21 Doily, 24 Camera, 25 Scorch, 27 Manifesto, 32 Overturn, 33 Delude, 34 Sporrán, 38 Blissful, 39 Amazon, 40 Open, 41 Snags, 42 Rigid, 45 A shot in the dark, 52 Asset, 55 Scope, 56 Best, 57 Strata, 58 Adapting, 61 Smelter, 62 Hordes, 63 Unwieldy, 66 Dramatist, 68 Fields, 69 Assign, 73 Messy, 74 Flagging, 76 Songwriter, 81 Ice rink, 82 Casino, 83 Evened, 84 Bred, 85 Undergo, 86 Gargantuan, 87 Swindle.

DOWN: 1 Balsa, 2 Tiresome, 3 Rankle, 4 Satan, 5 Odds, 6 Yiddish, 7 Raffia, 8 Khaki, 10 Acre, 11 Rowboat, 12 Nestle, 17 Improvised, 18 Strip, 22 Transmit, 23 Peeps, 24 Crowbar, 26 Clue, 28 Android, 29 Trauma, 30 Plinth, 31 Haggle, 33 Dozen, 35 Rings, 36 King, 37 Near, 43 Income, 44 Impel, 46 Seep, 47 Options, 48 Inside, 49 Turns, 50 Enthused, 51 Kidney, 52 Aspidistra, 53 Slip, 54 Tighten, 59 Terms, 60 Owed, 64 Stile, 65 Littered, 67 Reserve, 68 Foghorn, 70 Beacon, 71 Timing, 72 Egress, 75 Guava, 77 Ocean, 78 Ridge, 79 Snug, 80 Menu.

kia.co.nz

All-new Kia Sportage LX 2.0L Petrol

INTRODUCTORY MRP

\$34,990 +ORC incl. GST*

Features include:

- 2.0L Petrol Engine
- 6-speed Automatic
- Front Wheel Drive
- 17" Alloy Wheels with Full Size Alloy Spare
- Electronic Park Brake
- Forward Collision Avoidance Assist - Car, Pedestrian, Cyclist & Junction
- Blind Spot Collision Avoidance Assist
- Rear Cross Traffic Collision Avoidance Assist
- Lane Keep Assist & Lane Follow Assist
- Rear Seat Occupant Alert
- Multi-Collision Braking
- Trailer Stability Assist
- Smart Cruise Control with Stop & Go
- Front & Rear Parking Sensors
- LED Front Headlights & Daytime Running Lights
- 8.0" Colour Touchscreen Infotainment
- 4.2" TFT LCD Colour Multifunction Display
- Wireless Apple CarPlay™ & Android Auto™
- Cloth Interior Seats
- Roof Rails



*Introductory MRP applies to Sportage LX 2.0L Petrol. Offer expires 31 December 2021. The Kia 5 Year Warranty Programme runs for 5 years or up to 100,000 kms (whichever occurs first). All other on road costs (ORC) are additional. Terms and conditions apply, see your Kia dealer for details.

THAMES VALLEY KIA 321 Pollen Street, Thames Ph 07 868 8951

2017 Toyota Corolla

GLX,
Hatch,
Auto,
Alloys



\$21,990

2018 Toyota Highlander GXL

AWD, 3.5P



\$49,990

2019 Toyota Corolla, GX, Hatch, Auto, Alloys, NZ New	\$25,990
2018 Toyota Hiace, 12 Seater Minibus	\$49,990
2018 Toyota Highlander GXL, AWD, Leather, Alloys	\$49,990
2018 Subaru XV, Prem, AWD, T/bar, Top spec model	\$34,990
2018 Toyota Yaris, Sig Class, Auto	\$19,990
2017 Toyota Landcruiser, 200 Series, Bullbar, T/Bar	\$99,990
2016 Toyota Hilux, SR5 Ltd, 4WD, D/cab, Man	\$42,990
2016 Hyundai Tucson Elite, AWD, Diesel	\$34,990
2016 Toyota Hilux S/Cab, 2WD, 2.8 T/Diesel	\$29,990
2016 Toyota Corolla GX, Sedan, Alloys	\$18,990
2013 Nissan Juke, Alloys, Auto, Red	\$12,990

2019 Toyota Corolla GX, Hatch	\$25,990
2018 Toyota RAV4 GX SUV 2.5P AWD	\$28,990
2018 Toyota Yaris GX, Sig Class	\$19,990
2018 Toyota Corolla GX, Alloys, 1.8 ltr, Auto	\$19,990
2017 Toyota Hilux SR EC 2.8TD 4WD 6M	\$45,990
2017 Toyota Corolla GLX, Auto, Alloys, Sedan	\$21,790
2012 Toyota Ractis 1.3P CVT Hatch	\$11,990
2011 Toyota Hilux 2.7P 2WD SC 5M	\$21,990
2006 Toyota Allion, 2.0L Auto sedan	\$7,990

Valley Toyota Thames

www.valley.toyota.co.nz • 07 868 8950

Contact - Karl Richards 0274 084 564

Christo Carstens 021 025 30264

Finance - Terry Boswell 0210 445 929



Tony Richards Toyota Paeroa

www.richards.toyota.co.nz • 07 862 7674

Contact - Kent Ravenhill • 027 878 0642

Finance - Kent Ravenhill 027 878 0642

CLASSIFIEDS

Death Notice	Situations Vacant	Public Notice
<p>McCorkindale, Diane: Passed away on October 23rd. Loved friend of Trevor and Rosemary Smith, Jamie and Bonnie Smith and good friend of Christine Auger. Best friend of Carol and Richard.</p> 	<p>KITCHEN HAND We are looking for someone to join our fun loving team in Thames. No experience necessary but must be able to work nights and weekends. Phone 868 6008 or 027 697 9003 for more information.</p> 	<p>More Than A School  Hauraki Plains College</p> <p>Applications are now open for 2022 COACHES and MANAGERS for the following Sporting Codes: Touch, Cricket, Rugby, Football, Hockey Basketball & Netball</p> <p>Please contact: sport@haurakiplains.school.nz for an application form. Applications close 30th November 2021.</p>
<p>For Sale Cub tractor mid mounted blade & levelling bar, mower & parts. Fire trailer, pump, hoses, suction etc. Roof rack, fits lge van. Adjustable roof rails. Bottle collection and more. For more information ph Thames 866 8009.</p>		
<p>Wanted Motorcycles, 4 wheelers & side x sides. Going or not. Phone 027 216 6867. A1 Motorcycles</p>		

Thank You..

To those businesses who continue to support **YOUR** only truly local paper, without our advertisers, we would not be able to give you **YOUR** local news. To the readers who continually tell us they read "from front to back", please continue to support these businesses and let them know next time you visit them...

"I saw your ad in ...

The Valley Profile

CALL THE EXPERTS

ARBORIST

TREE SHAPES
Qualified Arborists

- Treework Large & Small
- Stump Grinding ➤ Hedge Trimming
- Fruit Tree Pruning ➤ Chipping

For a free quote call
07 868 3985 or 0274 726627

BUILDING SUPPLIES

For all your building supplies
Trade welcome
79 Kopu Rd, Thames
Phone 868 0130

PlaceMakers

CLEANING

A J CLEAN UP CREW

- Lawn mowing
- Weedeating
- Hedge & tree trim
- Section clearing
- Gardening
- Rubbish removal
- Interior house clean
- New build clean/clear
- Odd jobs considered
- One off jobs welcome

0800 464 898
Alaine Hedges
027 242 7268
John Hedges
027 457 2018
Email: info@ajcleanupcrew.co.nz

CONTRACTING

RCC

07 862 4809 021 307 029
MARATOTO RD RD4, PAEROA
1.7 - 4.5 - 9 TONNE DIGGER

METAL / TOP SOIL / FILL SUPPLIES
FARM DRAINS / RETAINING WALLS
BULK SPREADING OF LIME AND FERT
DRIVEWAYS / FOOTPATHS

ELECTRICIAN

- Rural & Dairy
- Commercial
- Residential
- Heat Pumps
- Industrial
- Service & Maintenance

ngatea@laserelectrical.co.nz
Electrical Laser (07) 867-7049
"Totally Dependable"

FUNERALS

Valley FUNERAL SERVICES
FUNERAL DIRECTORS

Our family serving yours — in the Hauraki & Thames Corromandel Districts

- Traditional and Bespoke Funerals
- Direct Cremation
- Pre-Planning

Ph: 0800 862 6362
Des & Christine Necklen
Funeral Directors

Funeral Directors Association of NZ



FLOORING

Floor Solutions *Made Easy*

CARPET VINYL WOOD MOBILE

"Dee and Pippa are an awesome duo. They know what they are doing, honest, reliable and very professional. Highly recommend." Paku Lodge

Dee & Pippa
Phone: 027 747 7000
pippa@floorsolutions.co.nz
www.floorsolutions.co.nz

We come to you



HOME VENTILATION

Professional Air Conditioning Heat Pump Installation

Preferred Panasonic installer

Panasonic



Top Quality Work
New Home Builds Welcome
Phone 07 867 5547
or 027 323 7616
wiggins.service@xtra.co.nz

HIRE CENTRE

THAMES HIRE CENTRE
Jellicoe Crescent, Thames

Perrin Newland
Telephone: 07 868 9350
Email: hire@thameshire.co.nz
www.thameshire.co.nz

HOME HANDYMAN AND COMMERCIAL HIRE

IT

T.A.B.S TECH & ADMIN BUSINESS SUPPORT

IT SUPPORT
XERO, MYOB
ADMIN
WEBSITE
DEBT COLLECTION
HOT DESKS

www.tabs.net.nz



PAINT

- Quality • Paint • Colour • Advice
- Wallpaper • Accessories

Come in and see our friendly team at
Thames Resene Colorshop
Locally owned & operated
Cnr Queen & Pahau Sts
Ph 868 6644

Resene
the paint professionals

PLUMBER

Plumbing Laser Thames

PLUMBING • DRAINAGE • GASFITTING
GENERAL MAINTENANCE
07 868 6021
thames@laserplumbing.co.nz
"Covering The Valley"

RUBBISH REMOVAL

Smart Bins

Skip bins, Wheelie Bins, Farm Bins

Phone us or book online
0800 4 MY BIN or
07 868 6106
www.smartbins.co.nz


SEPTIC TANK CLEANING

ALLENS UNITED
Paeroa (2015) Ltd

LIQUID WASTE SPECIALISTS PORTALOO HIRE

0800 862 720 | 027 442 0067

Last month's winner of Thames Autos car valet worth \$150 was Barbara Rothschild (from Jennie McKay who found Pete in the October 13 edition in the O'Hagan Vision Care advert).
Go to page 2 for details on how to enter.



LETTERS

Send your letters to the editor to editor@valleyprofile.co.nz or PO Box 550 Thames, 3540. Letters must include your full name and address, be 250 words or less and may be edited, abridged or rejected at the editor's discretion.

NO POLICE PROBE

An honest administrative oversight on the part of our campaign team appears to have given the Deputy Mayor licence to use this newspaper to cast aspersions on a respected Iwi leader.

The return in question has been filed. There is no Police probe. Outstanding however is an apology to Josie, from both himself and the newspaper, for sensationalised reporting, unconscious bias and questionable motives to name-and-shame, as if on the offensive for the 2022 council elections.

Cr Milner might have put similar efforts into supporting a Māori ward for the Hauraki District, enabling community leaders like Josie to take a much-needed perspective to Council's table and, along the way, permitting himself the opportunity to acknowledge and address his own biases.

The week the October 13 article appeared, FAR BIGGER NEWS was the landmark decision of three Independent Commissioners rejecting the proposal by Waste Management to dump para on Ngāti Hako's tribal maunga, Te Rae-o-Te-Papa. Josie, a leader of the Iwi and successful submitter, when interviewed that week by national media was elated with the outcome, while the Hauraki District Council were supportive (with the possible exception of Cr Milner).

Sadly, his mean-spirited innuendos were foremost to this newspaper; Josie's credibility in this community given not a second thought. So to end at the beginning: No Police Probe. No investigation. But we do smell a rat.

- Phyllis Heemi, Paeroa
Josie-Anderson-for-Mayor 2019
Campaign Team

EDITOR'S RESPONSE

At the time of printing, the return in

question had not been filed. The date on Josie Anderson's Return of Electoral Donations and Expenses form is dated October 13, 2021, two days after our print deadline of October 11 for that week's Valley Profile.

At that time, there was an open Police investigation, confirmed to the Valley Profile by Police, which is why we reported it as any reputable media organisation with experienced and qualified journalists would.

There was no "sensationalised reporting", just basic journalism covering a standard public council meeting, which is legally permitted and in the public's interest.

There was no "unconscious bias" or "questionable motives to name-and-shame", the story would have been written about any person standing for a public-elected position who had failed to file election donations and expenses nearly two years after the legally required 55-day reporting period had passed. The Valley Profile published a fair, accurate and balanced report, including comment from council staff and Deputy Mayor Paul Milner both at the public council meeting as we are legally permitted to do, and after the meeting to clarify facts and get more information. We also gained comment from Josie Anderson after the meeting.

Council did not name the candidate in the meeting, but on their website it showed Josie Anderson was the only candidate who had not filed a report. This was later confirmed as correct by Josie Anderson during an interview with her about the issue.

After learning the report had been filed after publication of the story, the Valley Profile wanted to write a follow up story to say it had been filed, but Josie Anderson did not reply to a request for an interview.

News of the Tirohia landfill decision was released after the Valley Profile was printed that week, so we published a story about that for the following week's paper with one of our file photos taken as the only media organisation who attended the Ngāti Hako protest outside council's Paeroa offices during the hearing.

It would be advisable for anyone wanting to stand for a publicly-elected position to familiarise themselves with media law and basic journalism practice.

- Teresa Ramsey, editor

DEPUTY MAYOR'S RESPONSE

The September 29 council meeting report to consider the appointment of electoral officer was tabled. The Deputy Mayor, Cr Paul Milner, asked if the electoral officer followed process required under the Local Government Act 2002, in regards to 'receiving returns of electoral donations and expenses' and 'investigating possible offences and reporting alleged offences to police'. The electoral officer reported having done all that was required under the Act.

No reference to any candidate was made by name by Cr Milner.

As part of the appointment process with using an electoral provider for the first time, Cr Milner also asked if Council can expect an improved level of service for reporting of the number of votes cast and timelines of that reporting. The answer was again positive that all issues have been resolved and a higher level of service can be expected.

In regard to the recent landfill decision, Cr Milner was present during the hearing process and fully supports the outcome which protects the cultural values of this significant site.

- Paul Milner, Deputy Mayor

Valley thinks pink



Photo: TERESA RAMSEY

Kathy Rawiri, left, and Judi Nicholas man the Pink Ribbon collection station at Goldfields Mall in Thames on Friday, one of many collections throughout the region for Breast Cancer Foundation NZ's annual appeal.

Collectors raised funds for the Pink Ribbon Street Appeal on October 29-30 as part of Breast Cancer Awareness Month.

This will be followed by Zonta's annual Pink Walk fundraiser on November 17.

Extended Covid-19 restrictions around the country have forced the cancellation of major Breast Cancer Foundation fundraisers this year, with the charity expecting to lose more than \$500,000 in income as a result.

Breast Cancer Foundation NZ chief executive Ah-Leen Rayner

said as the charitable trust received no government funding, it relied entirely on the goodwill of New Zealanders to keep its life-saving work going.

"Every dollar we've lost to Covid is money we can't spend on supporting patients in their time of need, cutting-edge research, and education programmes to stop deaths from breast cancer," she said.

Breast cancer is the leading cause of death for Kiwi women under 65, and every year around 310 women are diagnosed with it in the Waikato District Health Board area.

DETAILS: Zonta's Pink Walk, November, 17, 5:30pm at Thames Wharf and walk to Kuranui Bay for a barbecue. Entry: donation/koha for the New Zealand Breast Cancer Foundation. Wear pink to go in the draw for spot prizes.

METAL RECOVERIES
2006 LIMITED
SCRAP METAL BUYERS & RECYCLERS

PH: (07) 868 9422

Stephen Young
0274 820 536

P.O. Box 768, Thames

DEPOT: 26 QUEEN ST, KOPU THAMES

PAEROA FARM SERVICES LTD
118 Normanby Rd, PAEROA, 3600
Ph: 07 862 8263

We specialise in Milking Machines & Equipment, Effluent & Irrigation Systems, Filtration & Purification, and Water Pump Supplies & Installations.

To cover all your dairy needs.

Email: shop@paeroafarms.co.nz
web: www.paeroafarmservices.co.nz

Papreeka
Hair Salon in Ngatea

Late night
Tuesday and Saturday
by appointment

39 Orchard West Rd
Ngatea

Ph 07 8677 990

For an appointment with
Ann - Ph 029 277 1964

Valley Liquid Waste
A. C. & A. M. YOUNG

- SEPTIC TANK DRAIN & GREASE TRAP CLEANING
- SUCTION TRUCK TRUCK & HIAB
- GENERAL CARRYING

DEPOT: 26 QUEEN ST KOPU

PHONE/FAX: (07) 868 3034

AHS: (07) 868 3116 – 0274 927 148

P.O. BOX 768, THAMES 3540

MODELS FOR SALE

Quality Diecast Models Rare & Vintage Toys

1/18 Holden EH Ute
\$299.50

Over 3,500 items in store & online!!

Open every day in November 9am - 4pm

57 Orongo Road
RD 4 Thames 3574
Ph: (07) 867 5340
email: info@modelbarn.co.nz
www.modelbarn.co.nz

MODEL BARN

Thames Centre Pharmacy
Dispensary & Healthcare Advice

Efficient convenient prescription dispensing

Open Monday to Friday
9am - 5pm
(closed 12.45pm - 1.45pm)

Thames Medical Centre
817 Rolleston Street
Thames

Ph 07 8685100 – Fax 07 2800724
pharmacist@thamescentrepharmacy.co.nz

Our team are locals supporting locals

SPORTS



Thames Valley wore charity jerseys in Saturday's match against King Country, raising more than \$28,000 so far for Goldfields School in its annual charity match. Photo: JAKOB ANDREW

Swampfoxes secure place in grand final

HEARTLAND RUGBY

The Swamp Foxes have now recorded seven straight wins in the Bunnings Warehouse Heartland Championship and with one round still to be played Thames Valley and South Canterbury have been confirmed as the Mead's Cup finalists.

Following their 50 -15 victory over King Country at Te Aroha last Saturday, the Swampfoxes are eight points ahead of third placed Whanganui (who they meet at Te Aroha this week) and therefore cannot be overtaken. South Canterbury remain two points ahead of the Valley and are expected to host the final

unless there is a major upset in their game against eighth placed West Coast.

Although the Thames Valley forwards played very well against King Country, the backs were not up to their usual standard.

They did have some good moments on attack but overall, there were too many misdirected passes considering the wealth of possession provided by the forwards. Once again Te Huia Kutia was named player of the day, showing up with his defensive work and strong runs with the ball in hand. A feature of this game was the operation of the lineouts, which was a big

improvement on recent games.

Todd Doolin scored his fifth try of the season and with his accurate goal kicking, he has now passed the century mark for Thames Valley with 102 points from only six games.

Because of Covid-19, and the lock down in central King Country, the visitors were not able to field their strongest team.

However, the players who were available deserve credit for fronting up. At times they had the better of the Swampfoxes but they did fade in the final quarter.

Doolin opened the scoring with two penalty goals, then he missed converting a try by

Will Newbold only to convert a try of his own to give Valley 18 points at half time. King Country had responded with a try to half back, Nat Smith. John Ika converted the try and shortly afterwards kicked a penalty goal enabling King Country to go into the break only eight points behind.

Doolin opened the scoring in the second half with two more penalty goals before Neels went over by the posts and Doolin added the extra two points.

From a quick tap penalty, Tapili scored out wide for King Country and Joe Cook showed his speed by racing up and charging down the attempted conver-

sion. Score 31 -15. Thames Valley were awarded an automatic seven points for a penalty try when Cooke just failed to place the ball because of a high tackle. Sione Vakapuna Etoni and Josh Kaho finished off the try scoring with Todd Doolin converting Etoni's try. Final Score: Thames Valley 50 King Country 15.

Next Saturday's game at Te Aroha will be full of interest as Thames Valley and Whanganui have had some hard fought battles in recent years.

Top six teams: South Canterbury, 35 points; Thames Valley, 33; Whanganui, 25; Horowhenua-Kapiti, 23; North Otago, 20; Mid Canterbury, 20.-

Thames Valley Swampfoxes



vs Whanganui



Round 8 of the 2021 Bunnings Warehouse Heartland Championship Competition.

Saturday 6th November, Boyd Park, Te Aroha - 2.00pm Kick Off



General Admission. Tickets are \$5.00 CASH ONLY, no eftpos. Free for children under the age of 18.

Pre-Sale Tickets can be collected from the TVRFU Office (140A Normanby Road, Paeroa). Let's get in and support the THAMES VALLEY SWAMPFOXES for what might be their last HOME game for the 2021 Season!



Paeroa Auto Electrical

- Auto Air Conditioning
- Latest Diagnostic Tools for your European Car
- Range of Batteries for Cars, Trucks, Tractors, RVs and more
- On Farm Auto Electrical Service

Ph: 07 862 8565 Email: unipoint@xtra.co.nz
3 Belmont Road Paeroa



