

The Valley Profile

ISSN 2703-5700

PUBLISHED EVERY WEDNESDAY

Issue 031 July 28, 2021

The Plantery
'plant based living'
www.theplanteryshop.co.nz

BIG delivery of new plants this week!

The Depot, 715 Pollen St, Thames Behind Café Melbourne

Water cost to rise - Mayor

A proposal made by Central Government to fix the country's water infrastructure could mean the cost to ratepayers throughout the region is likely to increase threefold. KELLEY TANTAU reports

Thames-Coromandel's Mayor has likened the Government's Three Waters reform to Britney Spears' conservatorship, saying it'll be like "having your name on something, but you're not sure what".

Central Government is proposing to build a better system for New Zealand's three waters - drinking water, wastewater and stormwater.

Currently, 67 different councils own and operate the majority of these services, and the reform proposes to establish four publicly-owned, multi-regional entities which would take over from July 1, 2024.

The Government said it would work with councils to build a better system that was still owned by the communities it served, but in Thames-Coromandel, where the council has already spent millions upgrading its water treatment plants, the reform would have a large financial flow-on effect.

"The new entity proposal means that council's retain ownership and that's the end of it - I call it 'A Britney Spears'," Thames-Coromandel Mayor Sandra Goudie told *The Profile*.

"Your name is on something but you're not sure what."

Mayor Goudie said whatever happens going forward, the cost for water infrastructure to ratepayers would "increase exponentially".

"We're talking about close to triple the cost of water infrastructure supply," she said.

"And of course, no matter how you

do it, it's the hard working mums and dads that have to pay for this stuff."

The council has already upgraded Tairua, Pauanui and Whitianga's water treatment plants, with the remaining seven water treatment plant upgrades set to be completed by 2023-24.

But Mayor Goudie said the scheme would see them undertake a "never ending job".

"And of course, no matter how you do it, it's the hard working mums and dads that have to pay for this stuff."

- Sandra Goudie

"We've got to renew some of the infrastructure for Thames; we'll need to have Wharekaho/Simpsons Beach connected to the Whitianga water supply; we'll need wastewater and stormwater for Hahei; we'll have to put more effort into that

infrastructure for Matarangi; and as Coromandel Town expands, we'll need more infrastructure there," she said.

"We'll probably need additional filtration plants as communities grow, and we may even need another wastewater plant."

Mayor Sandra said three waters was "definitely a matter of huge significance" and ought to go out to public consultation before any decisions were made.



Thames-Coromandel Mayor Sandra Goudie.

Photo: SUPPLIED



CONTINUED P2

Need a rubbish bin?

With a range of size options - we've got you covered!

PHONE 0800 4 MY BIN (0800 469 246)
EMAIL sales@smartbins.co.nz
ONLINE www.smartbins.co.nz

smart environmental

WE ARE LOCAL - proudly 100% Kiwi owned & operated

THE GOOD YARN STORE
THE DEPOT

BIRTHDAY SALE

It's The Good Yarn Store's one year anniversary!

To celebrate, there will be specials on selected products and a **10% discount** will apply on any non-sale items purchased to the value of \$100 and over*. Come on down to The Depot, on Saturday 31 July to take advantage of these one-day deals.

The Good Yarn Store
Shop 3, 715 Pollen Street, Thames
M 021 332 649
thegoodyarnstore

*Specials and discounts only apply on Saturday 31 July 2021. Conditions apply.

www.thegoodyarnstore.co.nz

CONTACT US

The *Valley Profile* is a community newspaper that delivers 100% local news in the Thames Valley region. We deliver 12,500 copies each Wednesday to every letterbox, reaching approximately 30,000 readers in Hauraki Plains, Paeroa, Thames, Thames Coast and surrounding rural areas, plus bulk distribution around the Coromandel Peninsula.

NEWS/EDITORIAL

Editor Teresa Ramsey
Ph 0204 0944 853

Email: editor@valleyprofile.co.nz

Reporter Kelley Tantau

Ph 022 619 4889

Email: kelley@valleyprofile.co.nz

ADVERTISING

Ad manager Nikki Sanders

Ph 022 1303 885

Email: nikki@valleyprofile.co.nz

MISSED PAPERS/ADMIN

Ph 027 396 2459

Email: admin@valleyprofile.co.nz

100% LOCALLY OWNED AND OPERATED

PO Box 550, Thames 3540

www.valleyprofile.co.nz

Hi, my name is Pete the Pukeko and I'm here to help you. Find me in one of the display advertisements in *The Valley Profile*, then email admin@valleyprofile.co.nz or Ph/txt 027 396 2459 with your full name, the business name and page number of the ad by the following Monday to go in the draw to **WIN a car valet from Thames Autos worth \$150!** The prize is drawn at the end of each month.



Reader's delight at upcoming Bookarama

By **KELLEY TANTAU**

Donating and buying books can have a big flow-on effect when Thames Valley's Zonta club convenes for their August Bookarama.

The club's only fundraiser that goes on to help projects locally, nationally, and internationally, will see hundreds of books for sale at St James Church in Thames.

But first, the books need to get in the hands of the Thames Valley members, and president Pam Harsant is calling on the public to drop off pre-loved books of any genre.

"We're almost expected to run the event now, because people just turn out to see it and look out for it. We collect as many books as we can," she said.

Founded in 1919 in the USA, Zonta International has 30,000 members in 1,200 clubs across

67 countries. Members volunteer their time to support women and girls in their local communities, run projects in many parts of the world to improve the lives of women, and advocate on women's issues at all levels of society.

In New Zealand, Zonta has been active for 50 years, and has 28 clubs from Northland to Otago.

The Thames Valley club had been operating for at least 25 years, Pam said.

There were about a dozen members and they were always looking for more.

"When we make money from the public, we have to spend it back in the public, so it all goes towards awards and grants and donations," she said.

Zonta also offered scholarship and award programmes for furthering women's education.

Typically, the Thames Valley Club raises around \$6000 every year from the Bookarama. Even after the Covid-19 lockdown last year, people turned out in droves to get their hands on a new read.

"It was just as good as ever," Pam said.

"People really want us to run the event, and we often get phone calls from people asking when we'll run the Bookarama each year."

But Pam said the fundraiser was only made possible through people's support.

DETAILS: Zonta Club of Thames Valley's Bookarama, August 20 and 21 at St James Church, Thames. Books can be donated now at the Paeroa Information Centre or at The Treasury and ANZ Bank in Thames. They can also be collected. Phone Althea on 07 868 9970 for info or to help.

Water reform could be costly - Mayor

CONTINUED FROM P1

However, her understanding was that Parliament would soon cover the questions surrounding public consultation, and whether or not they were going to bypass the need for it.

Hauraki District Mayor Toby Adams did not wish to comment without obtaining further information about the reform, but referred *The Profile* to a council statement which said the \$2.5 billion support package was "helpful", however, it was not just about money. "There are still lots of unknowns and at this stage, our priority is to support our staff while we carefully consider the information, talk with our communities and advocate for the best outcomes for them and the environment," the statement said.

As part of the reform, the government announced a \$2.5 billion support package for councils, and, according to Local Government New Zealand (LGNZ), which earlier stated three waters would bring "acute affordability issues in some areas, particularly among smaller councils with aging populations", the funding would help set councils up to focus on community wellbeing.

"The key thing for us now is that councils have the time to work through the package and what it means for them and their communities. That will be our focus for the next eight weeks," LGNZ President Stuart Crosby said.

Paeroa Auto Electrical

• **Auto Air Conditioning**

• **Latest Diagnostic Tools for your European Car**

• **Range of Batteries for Cars, Trucks, Tractors, RVs and more**

• **On Farm Auto Electrical Service**

Ph: 07 862 8565 Email: unipoint@xtra.co.nz

3 Belmont Road Paeroa



PAEROA FARM SERVICES LTD

118 Normanby Rd, PAEROA, 3600
Ph: 07 862 8263

We specialise in Milking Machines & Equipment, Effluent & Irrigation Systems, Filtration & Purification, and Water Pump Supplies & Installations.

To cover all your dairy needs.

Email: shop@paeroafarms.co.nz
web: www.paeroafarmservices.co.nz

Brett Harris Electrical 2016 Ltd

For all your Electrical Requirements 24/7

Specialist in all Farm Installations and maintenance.

Domestic - Rural Commercial

7 Mahuta North Road,

Hauraki Plains

Tel: (07) 867-5196

Mobile: 027 270 2804

Serving the Hauraki Plains for 25 years

Chartered Accountants

The Hauraki Taxation Service Limited

- For out of town independent accounting advice
- Established 1982
- Approved agents for Inland Revenue Department
- Offices in Thames & Coromandel Town



328 Pollen Street, Thames
Ph/Fax: 07 868-9710

E: thames@haurakitaxation.co.nz

95 Kapanga Rd, Coromandel
Ph/Fax: 07 866-8660

E: coro@haurakitaxation.co.nz

Thames Tides

Wed Jul 28	Thu Jul 29	Fri Jul 30	Sat Jul 31	Sun Aug 1	Mon Aug 2	Tue Aug 3
 Morning: 3:55am 0.5, 10:11am 3.5 Afternoon: 4:09pm 0.6, 10:37pm 3.6 Sun: 7:20am 5:29pm Best At: 3:27am 3:49pm Set: 10:00am Rise: 9:47pm	 Morning: 4:41am 0.6, 10:56am 3.4 Afternoon: 4:54pm 0.7, 11:23pm 3.5 Sun: 7:19am 5:30pm Best At: 4:11am 4:32pm Set: 10:26am Rise: 10:47pm	 Morning: 5:26am 0.7, 11:40am 3.3 Afternoon: 5:40pm 0.8 Sun: 7:19am 5:31pm Best At: 4:53am 5:14pm Set: 10:51am Rise: 11:46pm	 Morning: 12:09am 3.3, 6:12am 0.8 Afternoon: 12:25pm 3.2, 6:30pm 1.0 Sun: 7:18am 5:31pm Best At: 5:35am 5:55pm Set: 11:16am	 Morning: 12:56am 3.2, 6:58am 0.9 Afternoon: 1:14pm 3.1, 7:23pm 1.1 Sun: 7:17am 5:32pm Best At: 6:17am 6:38pm Last Quarter Rise: 12:44am Set: 11:43am	 Morning: 1:43am 3.1, 7:47am 1.0 Afternoon: 2:07pm 3.0, 8:21pm 1.2 Sun: 7:16am 5:33pm Best At: 7:00am 7:22pm Rise: 1:43am Set: 12:12pm	 Morning: 2:33am 3.0, 8:40am 1.0 Afternoon: 3:05pm 2.9, 9:20pm 1.2 Sun: 7:15am 5:34pm Best At: 7:45am 8:09pm Rise: 2:41am Set: 12:45pm

*Not for navigational purposes. Graphic supplied by OceanFun Publishing Ltd. www.tidewiz.com www.tidespy.com www.ofu.co.nz

MOON AND FISH KEYS



TIME DIFFERENCES FOR OTHER PLACES

To determine tide times at the following places, add (+) or subtract (-) the given time difference from the Thames times listed in the calendar.

PLACE	Hr	MIN	HIGH	LOW
Coromandel	-0	05	-0	04
Whitianga	-0	02	-0	06
Tairua	+0	10	+0	20
Whangamata	-0	07	-0	08
Waihi Beach	-0	12	-0	13

Vaccination centre opens at Goldfields

By KELLEY TANTAU

The 18,000 people who make up Thames Valley's "Group 3" will be able to get their Covid-19 vaccine from Tuesday this week.

A Covid-19 vaccination centre, set to open at Goldfields Mall on Tuesday, July 27, will operate five days a week, Tuesday to Saturday, the Waikato DHB has confirmed.

New Zealand is now on to group three of its vaccination roll-out, which means people at risk of getting very sick from the virus - such as citizens aged 65 and over, with a relevant underlying health condition, a disability or in a position of caring for a person with a disability, or were pregnant - could gain early access to the vaccine.

Waikato DHB's Covid-19 vaccination implementation programme lead Maree Munroe told *The Profile* there were roughly 18,000 people from Thames and its surrounds making up group three.

The site of Goldfields Mall, in Thames, was selected for the vaccination centre because it was "a high profile area", she said.

"[It's] in a shopping centre, very accessible with ample parking, and we felt it would meet the

needs of the community."

The vaccination centre has been set up by the DHB in collaboration with Te Korowai Hauraki o Hauora; however, it will also be supported by general practices and pharmacies in the rohe (district), Maree said.

There will be 15-20 staff working at the site, made up of vaccinators, administration and kai manaaki (support) staff, who will ensure that each person is cared for during their vaccination experience.

"We know that there are many people very keen to have their vaccination," she said.

"Eligible people would have received a message to book their appointment either by text, email or a letter. Soon there will be a national number available publicly for eligible people to call to book an appointment if you haven't received an invitation to book from the DHB."

The current mobile sites will continue to operate, and there will be a number of GP practices and pharmacies setting up to vaccinate in the Coromandel, Maree said, with more detail to come as they opened.

DETAILS: Vaccinations are by appointment only, those eligible will receive an invitation by the end of July. More info: covid19.govt.nz.



Emma Hall had trouble finding a job after 10 operations and two years on ACC recovering from an accident.

New career after crushing accident

When nothing is going right in a job hunt, Emma Hall wants to remind people that everyone is worth something.

The Hauraki Plains woman came close to losing her right arm in a crushing accident a few years ago.

After 10 operations, two years on ACC, and an endless number of job applications declined, Emma decided she was worth more than the rejection she was getting from employers

who felt anxious about taking a chance on her.

"After running my own cleaning business, I knew how capable I was, but after the accident, it was hard to prove it physically - I had to relearn how to write and feed myself," she said.

"Eventually, I realised the one thing I could still do and loved doing was driving my ute.

"I sat my Class Two driving licence so I could have a go at driving trucks."

With this new skill under her belt, she felt sure her new career would soon be trucking along, but doors stayed firmly shut.

Determined not to give up, she posted her plight on Facebook. It caught the eye of Gr8 Job Hauraki's community employment liaison Julie Stephenson, who immediately contacted Emma.

Together they were able to

CONTINUED ON P14



THAMES COLLISION REPAIRS

"I have used Thames Collision Repairs on three separate occasions.

On each occasion I have found them to be very professional and quick. The quality of their work is second to none and the colour match is perfect. The results were like 'factory new'.

I highly recommend Jaco and the team if you need a paint or panel beating job on your car."

Peter Hansen
 Fire and Hose
 The Fire Watch Agent
 Thames/Coromandel

If you love your car phone us now or pop in for a quote.

Phone 868 9300

115 Jellicoe Crescent, Thames
 (behind the Elim Church)



50% off.

30 months interest free

*on in-store purchases \$999 & over 'til 3.8.21





Find your best sleep



BAXTERS

FURNITURE & BEDS R US

205 SEALEY ST, THAMES | PH 07 868 6128

Pothole debate could head to Ombudsman

By KELLEY TANTAU

The dispute over potholes in a Thames superette's parking lot could be put in front of the Ombudsman.

Harvinder Singh, the tenant of the Totara Superette along State Highway 25, has had no luck in getting Waka Kotahi NZ Transport Agency to share the costs of repairing the holes, which he said made the car park look "like a swimming pool" on a rainy day.

Since speaking to *The Profile* in June, he's spent more than \$1000 hiring equipment and metal to fill the holes, but he said it was only a "temporary" fix.

People continued to pull up to the shop and yell out to him and his wife, telling them to 'fix the bloody driveway', he said.

Waka Kotahi's Waikato system manager Cara Lauder earlier said while the transport agency was responsible for maintenance on SH25, this section of the highway was within the 70km/h speed environment, and Waka Kotahi was only responsible for maintaining the road "from kerb to kerb".

However, Thames-Coromandel District Council's roading manager Ed Varley understood

Waka Kotahi were responsible for maintenance of the entirety of the State Highway road reserve in this area, including the area in front of the shops.

He has provided Mr Singh with guidance about how he may proceed with the issue.

"Our council does have a Memorandum of Understanding with Waka Kotahi that within the 70kmh urban zone of state highways in our district where there is a verge, drainage, or footway, council has a maintenance liability.

"As there is no verge, drainage or footway in the area in front of the Totara shops, the council has no liability to undertake any maintenance. Any new works or improvements are the responsibility of Waka Kotahi, and are specifically excluded from the memorandum."

Mr Varley said as this had already been discussed with Waka Kotahi, his guidance boiled down to suggesting Mr Singh approach the Ombudsman for a final resolution.

The Ombudsman handled complaints about Government agencies, such as the transport agency, and Mr Singh said approaching it was a route he was willing to take.

A Waka Kotahi spokesperson said the agency remained of the

"Any new works or improvements are the responsibility of Waka Kotahi, and are specifically excluded from the memorandum."

- TCDC



Harvinder Singh, the tenant of the Totara Superette, recently spent more than \$1000 on pothole repairs.

view that the work required at the Totara site did not sit under its jurisdiction, as it did not maintain private parking areas or driveways, because they were for the use of private landowners and their visitors.

"The policy applied at this location is applied consistently across the country for the state highway network," the NZTA said.



The potholes at Totara shops.

Photos: KELLEY TANTAU

HAMMER HARDWARE

WE'RE YOUR LOCAL

LAST CHANCE TO GRAB A DEAL



4 for \$20

Ends August 10th 2021

Ngatea Hammer Hardware
16 Orchard West Road, Ngatea **07 867 7393**

Store Hours: 8am – 5pm Monday to Friday
9am - 2pm Saturday



Already working part time and wanting to up-skill?

Come and join our NZ Cert in Retail and Customer Service Level 2 course. We can work around your days of work to have you in class 2 days a week. Build your confidence, up-skill and gain a qualification. Not employed yet but want to work in this area? We will find you work placement for the course, build your confidence, up-skill you and you will gain a qualification. Open to anyone 16 years plus. Worried you are too old? Never too old to learn new things.

Calling all Girls! Don't mind getting your hands dirty? Sick of waiting for your other half to fix that gate? Got an interest in the manufacturing and technology industry? Level 2 Mechanical Engineering empowers adults and youth with introductory skills to welding and engineering processes. Girls can weld too! Come and meet our new tutor Beau, she is ready to help you on your learning journey.

School not quite do it for you? Did you miss out on NCEA Level 1? We have 3 great courses, Mechanical Engineering L2, Agriculture L2 and Foundations Skills that you can achieve your L1 as well as a qualification. Whether you like being indoors or outdoors, we have the courses for you and some amazing tutors waiting to assist. If you already have your L1 you can still join these courses. Once again 16 plus, age is no barrier.



Drivers licence... we now do driving lessons and car hire. Give us a call.

We have other short courses, but if you want to know more about those, you can pop on in, give us a call or keep an eye out for our advertising. We like to have fun around here so come along and meet us.

Look forward to hearing from all you Valley Profile readers.

Valley Education & Training
50 Kopu Road, Kopu, Thames 3578

Tel 07 8687892
driving@valleyeducation.co.nz
www.valleyeducation.co.nz

Kumar's credits community for its 20 years

By KELLEY TANTAU

At Christmas time four years ago, Santhosh Kumar hung fairy lights inside his Indian restaurant in Paeroa.

Not wanting to take them down once the holiday season was over, he decided to instead keep adding to the collection, and the eatery now glows - red, yellow, green, blue.

The vision for the restaurant, called Kumar's Something Special - which has just celebrated its 20th year - had sat inside Santhosh's head for decades.

Back in India, his family had run bakeries, and Santhosh was a professional baker himself, but when everyone zigged, he decided to zag.

"My ambition was to do something like this; it was always in my blood," he told *The Profile*.

"This is what my dream was, and even when we moved here, even though I was working for someone else, my dream was to cook for people and get that appreciation from them."

Santhosh moved to New Zealand in 1997, heading straight to Thames where he got a job as a baker.

"Within a year or so, I lost my job," he said.

"There used to be a policy that said: last man in, first man out. That was me, but it was good because that's how I was able to open my own Indian



Santhosh Kumar, second left, with his family Sabin, Bindu, and Sabeesha, underneath the iconic Christmas lights in their restaurant. Photo: KELLEY TANTAU

restaurant."

He and his wife, Bindu, and their two children, Sabeesha, and Sabin, relocated to Paeroa where Santhosh's dream was made possible.

However, it wasn't all smooth sailing.

"When we started, we struggled a little. [People] used to come and open the door, smell the smells, and then shut the door and walk away," he said.

"You'd see their faces, and they'd doubtfully look at us. But I'm not blaming the town, because they were not used to it."

In fact, Santhosh credited the town for keeping Kumars afloat after all these years, in particular, around six families who supported him in those first 12 months.

"For some reason, there were a few families that came and

supported us. It was not necessarily for the food, I know that," he said.

"They were coming to help me out."

Within a year, the Hauraki District became accustomed to the new cuisine, and in 2002, Kumars moved to a bigger premises - the Normanby Rd location they are still at 18 years later.

Santhosh and Bindu soon

welcomed their third child, a daughter named Chandana, and all the children have helped out at the restaurant over the years.

"It is a family business," Santhosh said. "Everything has come together."

And while it continues to be business as usual for the family, the town could bet on a big celebration at Kumars come 25 years.

Thames Autos

A Division of Takairi Motors Ltd. R.M.V.T.

HOME DEMONSTRATIONS AND DELIVERIES AVAILABLE

WE CAN COME TO YOU

www.thamesautos.co.nz

<p>2006 Honda CR-V 2.4 Auto, Popular SUV</p> <p style="text-align: right; color: red; font-weight: bold;">\$9,990</p>	<p>2014 Ford Fiesta Auto Turbo, Immac Condition, 106km</p> <p style="text-align: right; color: red; font-weight: bold;">Now Just \$13,990</p>	<p>2010 Mitsubishi Lancer NZ New, 2.0 Auto, Towbar, Excellent Condition</p> <p style="text-align: right; color: red; font-weight: bold;">\$8,990</p>	<p>2014 Ssangyong Rexton Diesel Auto, 4WD Hi-Low, Tow Bar, Mint Condition, SPECIAL</p> <p style="text-align: right; color: red; font-weight: bold;">Now \$14,990</p>
<p>2010 BMW 116i Auto, 1.6 Ltr, Top Condition & Service History</p> <p style="text-align: right; color: red; font-weight: bold;">Special \$8,990</p>	<p>2013 Range Rover Equipe Top Of The Range on 20" Alloys, Immac Condition</p> <p style="text-align: right; color: red; font-weight: bold;">\$38,990</p>	<p>2001 BMW 325 SW, 2.5 Ltr 6 Cylinder</p> <p style="text-align: right; color: red; font-weight: bold;">Arriving Today</p>	<p>2012 Nissan March Auto, Good Km, Immac Condition</p> <p style="text-align: right; color: red; font-weight: bold;">\$9,990</p>

LEYLAND STOWE

Mob: 027 355 5152 Ph: 07 868 8981
or 0800 868 898
609 Pollen St, Thames RMVT
thamesautos@xtra.co.nz

No Deposit Finance available on all vehicles. Full workshop servicing & repairs available including Auto Electrical service

WHAT'S ON

Email your community event or club or group notice to editor@valleyprofile.co.nz by noon Thursday the week before publication. Listings are published at the editor's discretion and may be edited. Clubs and groups are responsible for keeping listings up to date.

UPCOMING EVENTS

July 28: Thames Continuing Education Speaker Series: Auckland University of Technology history professor Paul Moon, Thames Civic Centre, 10:30am.

July 30: Songwriters Soiree: Edward Castelov and O & The Mo at the Back Room, Pollen St, 7pm.

July: I am Not an Algorithm exhibition: by Deb MacDonald Brown at GBD until the end of July.

August 6: Moanataiari School Quiz Night: Bite Cafe, 6pm. Food and drinks available, silent auction, raffles. Register a team by July 30, text: 0210 263 4461.

August 8: Paeroa Little Theatre Auditions: 1.30pm at Paeroa Little Theatre. *'Twas the Fight Before Christmas* by playwright Devon Williamson. Cast: Four women and two men, ages 25 to 65 years. Contact Sara for a script: Ph 027 479 8460.

August 8: Barbershop Men's Chorus, Mighty River Harmony: St Georges Church, 2pm. Tickets: cash at the door, adults: \$20; members: \$15; kids: \$5.

August 13-15: 150 Years of Thames Rugby: Thames Rugby & Sports Club, Rhodes Park, catch up function, invitational game and dinner: www.trsc.co.nz/150years.

August 21: Dog training for kiwi avoidance: at the Kauaeranga Visitor Centre, Ph 07 867 9080 or email kauaerangavc@doc.govt.nz.

August 21: Thames Valley Chess Championship: at the Thames Civic Centre. Must be level one to play. Free entry.

September 12: Trail Trilogy: Run or walk 10km to 140km on Hauraki Rail trail. More info: www.trailtrilogy.com.

October 5: Hotel California The Eagles Experience: A live concert and stage show, Thames War Memorial Civic Centre, 8pm. Tickets: eventfinda.co.nz.

October 16: Ngatea Garage Sale: Main street, Ngatea, 9am to 2pm.

March 11-13: Moanataiari School 50th Reunion: A weekend of events. FB: @MoanataiariSchool-Reunion2022, Registrations will open soon. moana.school.nz/contact-us.

LOCAL MARKETS

Kaiaua Seaside Market: at The Boating Club, Kaiaua, 9-1pm, last Sunday of month. Ph 027 489 7850

Karangahake Hall Market: Fourth Saturday of the month, 9am-2pm, 12 Crown Hill Rd. Ph 027 678 2035

Paeroa Car Boot Market: First and third Saturdays of the month, 101 Normanby Rd, weather permitting. Ph 07 862 7833

Puriri Valley Market: First Satur-

day of the month at Puriri Hall, 8am to 12:30pm. A variety of stalls on offer, Ph 027 4903 714 to book.

Thames Market: Every Saturday in Grahamstown, 8am to 12pm.

Turua Market: Third Sunday of the Month at Turua Hall, 9am to 1pm. Ph 027 696 7644

COMMUNITY CONTACTS

Corinthian Masonic Lodge, Thames: Colin, Ph 07 868 8196 or 021 259 6699

Craft Market: Lynette Mapson, Ph 027 617 4470

Diabetic Support Group: Thames Hauraki, Barry Young Ph 07 868 6353

Goldfields Women's Institute: Ph 07 868 8984

Hauraki Bowling Club Mangatarata: Pene Koch, Ph 07 867 3380

Hauraki Cardiac Support Club Thames: Ph 07 868 6148

Hauraki Country Music Club: Tina Haakma, Ph 07 868 3443

Hauraki Golf Club: Len Cameron, Ph 07 867 7660

Hauraki Plains Co-operating Parish: Jane, Ph 027 471 4654

Hauraki Plains Diabetic Support Club: Ryan Corr, Ph 07 868 8551

Hauraki Plains Rural Show: Sonia, Ph 027 431 5825

Hauraki Plains St John: Call or pop into the Op Shop, Ph 07 867 8073

Hauraki Plains Youth Cricket: Anna Dodunski, Ph 027 466 4126

Hauraki RSA Memorial Club: Ph 07 867 7898 (evg) or 07 867 7301

Hauraki Vintage Machinery Club: Ph 07 867 7281

Jig Saw Puzzle Library: Mangatarata, Ph 07 867 3250

Kerepehi Brass Band: Rowan Garrett, Ph 07 867 6762

Kerepehi/Paeroa Indoor Bowls: Ph 027 418 4300

Kerepehi Women's Institute: Ph 07 867 6002 or 07 868 8582

Mahjong: Nola Walker, Ph 07 867 7301

Music and Movement: Suzanne, Ph 027 337 2544

NAAM: 11am -12.30 Tuesdays, Thames. Leigh, Ph 027 497 8601

Ngatea Badminton: Jenny Adams, Ph 07 867 3028

Paeroa Bowling Club: Paul, Ph 021 0290 1508 or Gary Ph 07 560 9200

Ngatea Chinwag Cafe: 10am-12 Tuesdays, parish hall, Darlington St

Ngatea Community Garden: Jane, Ph 07 867 7245

Ngatea Garden Circle: Alice Douglas on 07 867 7463

Ngatea Indoor Bowling Club: Ph 07 867 6082 or 07 867 8015

Ngatea Lions Club: Bruce Foster, Ph 021 043 9280

Ngatea Playcentre: President, Ph 027 327 5536

Ngatea Pony Club: Nicky Hamblyn,



As the winter kicks into gear, two of the county's most charming acts are teaming up for a cute run of shows to warm the cockles of your hearts in the form of the *Songwriters Soirée*. Bask in the candle-lit vibrancy and indie folk stylings of renowned Tāmaki Makaurau sweetheart Edward Castelov and Nelson/Pōneke dreamboats O & The Mo when they merge for a special set of intimate performances.

The Songwriters Soirée will see both acts in stripped back mode, sharing the performance space in tandem and entwining their sets song for song while discussing themes and offering insight into the material or its inspiration along the way.

DETAILS: Catch the show at 7pm on July 30 at the Back Room, Pollen St, Thames. Tickets: \$10, book at undertheradar.co.nz.

Ph 07 867 7078

Ngatea Scouts: Kim Donaldson, Ph 07 867 7350

Ngatea Women's Institute: Nola Walker, Ph 07 867 7301

NZ Red Cross Thames: Betty Sutcliffe, Ph 07 868 6148

NZ Society of Genealogists Thames: Pam French, Ph 07 868 6492

Paeroa Citizens Advice Bureau: Tuesdays and Thursdays from 10am-1pm, Ph 07 862 8093

Paeroa Community Knitters: Lyn Ph 07 560 9200 or Sandra 022 610 1734

Paeroa Community Programmes: Ph 07 862 9129

Paeroa Drop In: Every Tuesday 9.30am-12.30, St John Rooms

Paeroa Grey Power: Secretary Gail Locke, Ph 07 862 6256

Paeroa Society of Arts: paeroart-society@gmail.com

Paeroa Walking Group: 9am, Mon, Wed, Fri, Elaine Lally, Ph 07 862 8409

Probus: Jill McIntosh, Ph 07 867 7373

Runner Runner Poker Club: Thursdays, 6.30pm at Punters Bar.

Scrapbooking: Pam Tonks, Ph 07 867 7780

Solarpunk Aotearoa: John Mckeowen, Ph 021 063 5483

St Paschal's Catholic Church: Ph 07 867 7401 and 07 867 7056

Tai-Chi exercise Kaiaua: Stacy, Ph 09 576 3705

Tasty Books & Wine Tasting: Anne, Ph 07 867 3367

Thames 50+ Cycle Group: Chris, Ph 0274 998 159

Thames Bonanza Club: Meets third Thursday of month, Ph 07 868 6673

Thames Bridge Club: 401 Brown St, Monday and Thursday at 1pm, Tuesday at 7pm. Ph 07 868 8023

Thames Chin Wag Cafe: Mondays 10:30am, 608 Queen St, Ph 07 868 9790

Thames Continuing Education: Fourth Wednesday of month, Ph 021 564 339

Thames Creative Fibre Group: Dana Catley, Ph 07 868 7310

Thames Croquet Club: Dennis Karl, Ph: 07 868 2423

Thames Dahlia Club: Paul Silvester, Ph 07 868 9346

Thames Floral Art Club: third Monday of the month. Ph 07 868 9873.

Thames Hauraki Parents Centre: Meike, Ph 07 867 3163

Thames-Hauraki Scottish Country Dance Club: Ph 07 280 0631

Thames Heritage Network: Margaret Cropp, Ph 07 868 1024

Thames Lions Club: Ph 07 868 9873 or email: pandb@xtra.co.nz

Thames Menz & Womens Shed: Tony Winter, Ph 027 290 0023

Thames PickleBall Club: Tuesdays,

10-11am, Ph 027 290 0023

Thames Probus Club: Meets second Tuesday of month, Ph 07 868 5573

Thames Rotary Club: Warren Sly, Ph 021 772 351

Thames Ruby Redz Red Hatters: Ngaire Potter, Ph 07 868 3421

Thames Senior Indoor Bowls: Tuesdays 9.30am - 12pm, St James Hall. Ph Val, 021 054 2337

Thames Steady As You Go: Falls Prevention group, Thursdays, 1:15pm, St Georges Hall, Ph 07 868 9790

Thames Tennis Club: Contact Marie, Ph 027 217 1682

Thames Toastmasters Club: Ph 027 296 8585

Thames Valley Adult Riding Club: Helen Pooley, Ph 021 233 1245

Thames Valley Zonta Club: Pam Harsant, Ph 027 495 5583

Totally Thames Inc: Deb MacDon-ald Brown, Ph 027 228 8011

Tramping in Thames area: www.sporty.co.nz/kauaerangatramping-club

Turua Playcentre: Estelle, Ph 027 371 8511

Turua Scouts: Leanne Scott, Ph 027 329 7887 or 07 867 8388

Ulysses Motorcycle Club: Thursdays at L&P Bottle, Paeroa, 9:30am, Ph 021 028 28442 or 021 701 466

Women's Loan Fund: Ph 07 868 7820

Paeroa Little Theatre invites you to AUDITION

Sunday 8 August, 1.30 pm, Paeroa Little Theatre

'Twas the Fight Before Christmas by playwright Devon Williamson.

Cast: Four women and two men, ages from 25 to 65 years.

For script requests please contact Sara Single, 027 479 8460.



BOOKARAMA Is Coming! Please DONATE your old books NOW!

Zonta is seeking books for Bookarama on Friday 20th and Saturday 21st August 2021.

To donate books contact:

- Thames: phone Althea on 07 868 9970
- Ngatea: phone Murray on 027 273 7963
- Paeroa: Drop off at the "i-site"
- Thames: Drop off at The Treasury or ANZ Bank

THANK YOU

Rural Life

Trikafta funding application 'fantastic', says farmer

Paeroa farmer James Lambie takes 75 pills and does two hours of physiotherapy each day for cystic fibrosis. He's hoping that will soon end if a cystic fibrosis medicine that currently costs \$400,000 a year is funded. KELLEY TANTAU reports

A Hauraki farmer says Pharmac's funding assessment for a new cystic fibrosis medication is "fantastic news" for sufferers.

James Lambie, a beef farmer from Paeroa, was diagnosed with cystic fibrosis (CF) as a child. Amidst the Covid-19 pandemic last year, he was vocal in calling on the Government and Pharmac to fund a drug called Trikafta to help him and more than 500 others suffering from the disease in New Zealand.

Now, pharmaceutical company Vertex has submitted its application to Medsafe and Pharmac for approval of Trikafta, which according to Cystic Fibrosis NZ, worked for around 90 per cent of those with cystic fibrosis.

Medsafe has accepted the application and granted it priority

status, while the Government agency Pharmac has started its funding assessment process.

"The fact that Vertex has submitted Trikafta's application to both Medsafe and Pharmac at the same time is fantastic, and if all goes to plan, it could save months and months in the overall timeline," James, 28, told *The Profile*.

He said the advocacy group Trikafta 4 Kiwis, as well as Cystic Fibrosis NZ had worked hard for the outcome, but it was "only the start of a long road".

"Medsafe and Pharmac could still take years assessing this application, before even talks of a price deal with Vertex come into play," he said.

"With Vertex opening up the compassionate access route, those Kiwis critically ill with CF at least now stand a chance."

- James Lambie

"[But] with Vertex opening up the compassionate access route, those Kiwis critically ill with CF at least now stand a chance."

Cystic fibrosis is a disease that affects the lungs and digestive system. Around 540 people in the country have it.

And, according to Cystic Fibrosis NZ, Trikafta provided significant and immediate improvements for those with the disease by increasing lung function and weight gain, reducing the burden of treatment, improving quality of life,



Paeroa beef farmer and cystic fibrosis sufferer James Lambie, with wife Emma and daughter Jess. Photo: SUPPLIED

and increasing life expectancy.

It cost more than \$400,000 a year, and because the drug was out of the Lambie's reach, James had to undergo two hours of physiotherapy every morning and take 75 pills a day.

He was working on his farm with his lung function sitting around 50 per cent, which he said continued to decline.

Getting limited oxygen in every breath was also very tiring, he said.

"No one has had an application granted yet at this stage, but in the long run it should mean about the worst 10 per cent of the CF population in NZ will hopefully be granted this medicine while negotiations with Pharmac and Vertex take place."

In a statement, Pharmac said Vertex had applied for its triple combination modulator therapy medicine to be funded for people aged over six with cystic fibrosis, making New Zealand the first country to receive an application for those under the age of 12.

"Before we can fund any medicine, we need advice from our clinical experts, a deal with the medicine supplier, and enough money in the budget to fund it now and in the future," Pharmac's director of operations Lisa Williams said.

Scientific evidence on the medicine will be assessed within the next few months.

"If it makes it to our options for investment list, we'll aim to fund it when we have money available in our budget. I do want to acknowledge that it is one of the most expensive applications we have ever received," she said.

Pharmac gets around 40 new medicine funding applications each year. In the past financial year, it funded 14 new medicines.

Solis

A tractor that offers high levels of fuel efficiency & performance, great value for money.

Now in Ngatea



90HP Solis with front end loader

\$52,000 +GST



\$19,000 +GST
26HP Solis hydrostatic with loader & bucket



Hauraki Plains Motors

1 Pipiroa Road, Ngatea • Ph 07 867-7021

A/Hrs Mike 027 440 4681, Miles 027-227-1121 Email: admin@hpmotors.co.nz

Pets in good hands with new owners at Playful Paws

A mother-and-daughter duo have brought their experience and passion for pets down from the north to operate a reliable boarding lodge tucked within the Hauraki Plains.

Linda and Sophie Hepburn are the new owners of Playful Paws Pet Lodge, formerly known as Costar, along Hauraki Rd in Turua.

Moving to the district from Mangawhai, Northland, last month has meant the frosty mornings have come as a bit of a shock, but the thrill of expanding their business and being part of the Hauraki community has lit a fire under them.

"We started a doggy daycare up north about three-and-a-half years ago, and it grew from there.

"We've always been looking for something a little bit bigger," Sophie told *The Profile*.

Up north, the daycare had 15-20 four-legged guests visit each day. The pair also fostered, rescued, rehabilitated, and rehomed dogs.

In Turua, the boarding and cattery side of the business is up and running, with a daycare service to follow once they've "found their feet".

"We do try to cater to the dogs' needs as much as we can - if you've got an old dog or a little dog or a nervous dog, anything like that, we can make them more comfortable," Linda said. "We treat the dogs like they are our own pets, and we



Playful Paws Pet Lodge owners Linda and Sophie Hepburn with their dog Axel.

Photo: KELLEY TANTAU

want the best for all of them."

Linda and Sophie's passion began a decade ago, when they lived in Thailand. For four years they were involved in volunteering at dog shelters and kennels.

"Then we thought, why not make a living from being around things we love?"

Playful Paws was established when Sophie was 19. She soon enlisted the help of mum Linda, and the two quickly became a bona fide team.

"It just always seemed right," Sophie, now

23, said. "I always felt like it was my calling. Whenever dogs are around, it always gels well."

Linda said she was proud of Sophie for starting the business, and said she had become a sort of "dog whisperer".

The pair said doggy daycare and boarding businesses were a growing industry, and it was now more of "a norm" for pet owners to book their pooches in for a play date during the week.

But it was important for the businesses to

be trustworthy, they said.

"Our goal is to make this a place people want to bring their pets to, as well as make it a safe and fun place for the animals."

Drop-off hours are between 8am-9.30am, and 4pm-5.30pm, but they are flexible by arrangement. Appointments to inspect the property can also be arranged.

For information, phone 027 415 8209, email playfulpawspetlodge@gmail.com, or find them on Facebook.

- KELLEY TANTAU

Playful Paws Pet Lodge

previously Co-Star Pet Lodge on Hauraki Road Turua is

UNDER NEW OWNERSHIP

A dog & cat boarding & daycare facility with large grass areas for play & exercise with experienced caring staff waiting to care for your fur baby

PLAYFUL
PAWS
PET LODGE



"STAY AND PLAY"

For More Information

Ph: 027 415 8209

email: playfulpawspetlodge@gmail.com

web: www.playfulpawspetlodge.com



Playful Paws Pet Lodge

349 Hauraki Road, Turua

SPORTS



Magic's Khiarna Williams teaches students how to perfect their shoot techniques.

Photos: KELLEY TANTAU

A taste of netball magic in Thames

Waikato Bay of Plenty Magic netball players Caitlin Bassett and Khiarna Williams taught Thames Valley kids passing, shooting, and catching tactics as part of the ANZ FutureFERNs festival on July 22. Held at the Jack Mclean Community Recreation Centre in Thames, the event saw primary school and high school students take part. **KELLEY TANTAU** caught all the fun.



Thames High School's Victoria Bowen takes a shot.



Ella Brown, left, from Moanataiari School cuddles up to Magic goal shooter Caitlin Bassett.



Isabelle White pays attention to the instructions.



Khiarna Williams helps Holly van Houtte.



Caitlin Bassett helps students with their passing.



PHOTO SALES

Photographs taken by The Valley Profile are available for purchase, contact us today!
editor@valleyprofile.co.nz
0204 0944 853

The Valley Profile

THAMES VALLEY TANGATA ORA TRUST

The People's Wellbeing Trust

MOBILITY EQUIPMENT

DAILY LIVING AIDS

SALES & SERVICE

HIRE & SALES



- Mobility Scooters
- Wheelchairs
- Walkers
- Daily Living Products - Reachers, SockAids, Walking Sticks and more
- Electric Lift Chairs
- Bathroom and Toilet Aids
- Continence Products
- We will also do our best to source other products on request

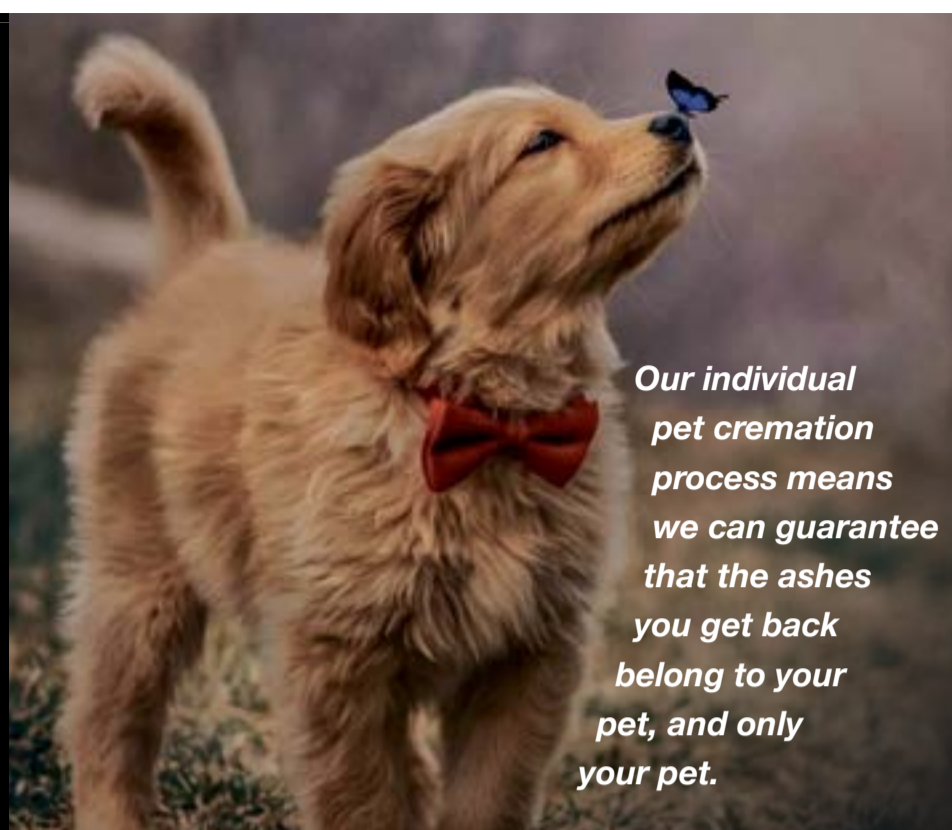
607 Mackay St, Thames (Opposite the hospital) • Ph: 07 868 7723 or 027 383 1117 • E: tvtot2017@gmail.com
Opening Hours: 10am - 3pm Monday to Friday - After hours by arrangement

THE THAMES ON KIRKWOOD

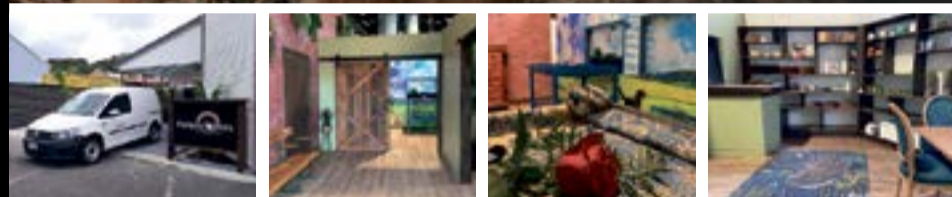


Unique ambiance and style. make your event or special occasion memorable

100 Kirkwood Street, Thames
Phone 07 868 6003
www.thethames.co.nz



Our individual pet cremation process means we can guarantee that the ashes you get back belong to your pet, and only your pet.



Kirkwood Street, Thames
P 07 868 6003
E info@foreverpets.co.nz
www.foreverpets.co.nz



ADVISE YOUR VET YOU WANT FOREVER PETS

*Simple.
Affordable.
Caring.
Dignified.*

Located in one of the oldest buildings in New Zealand, Thames Valley Crematory is proud to be able to offer our community and the wider Coromandel district our Direct Cremation services at a significantly reduced cost.

The direct cremation fee includes:

- The professional fee
- Basic cremation casket
- Cremation fee (Thames)
- All paperwork and death registration
- Two hours of viewing (within 24 hours) at Twentymans premises.

Direct Cremation within 15kms of Thames - \$2450.00

Direct Cremation that requires transferring from Whangamata, Tairua, Whitianga, Waihi, Paeroa, Ngatea and Coromandel - \$2700.00

Direct cremation that requires transferring from North of Coromandel - \$2750.00

Final Farewell at our crematorium with a maximum of 15 people - \$130

Phone 07 868 6003
www.twentymans.co.nz



Save your loved ones from the burden of making tough decisions at a difficult time by pre arranging your final farewell

We don't know when we'll die or who will be left to ultimately make those decisions. Planning ahead enables you to design your final send-off and share your last wishes with your family so that, in the end, you get the funeral you want with your own personal touches.

Contact our team today on 07 868 6003 to book a complimentary funeral pre planning appointment.



There's no better time to have an honest talk about your funeral plans than when you have strength.

www.twentymans.co.nz



The final FAREWELL



154 years young and going strong

Twentymans Funeral Services is New Zealand's oldest surviving funeral home, which has been dedicated to serving the people of Thames and the greater Coromandel Peninsula since 1867.

Over the decades many things have evolved but for the team at Twentymans, they continue to do what they do best which is taking care of your loved ones when you need them the most, 24 hours a day, 7 days a week.

Established by William Twentymans in 1867, Adrian Catran purchased the business in 1993. Between Adrian's vision, innovative technology, and the loyalty of the local community, Twentymans has withstood the test of time and is now an award-winning leader in the industry.

Today, Twentymans stands proudly alongside its sisters Thames Valley Crematory, Forever Pets and The Thames on Kirkwood offering the community a convenient range of affordable services all on one site.

Situated at 709 Pollen St, Thames, Twentymans have created a comforting space where families can discuss their funeral needs with a funeral director.

Twentymans have viewing rooms situated in Paeroa, Whangamata and Whitianga, each of these are open by appointment only. A service can be held at Grahamstown Chapel, which comfortably seats 200 people and has an exceptional audio



Twentymans Funeral Services.

Photo: SUPPLIED

and video system, which allows the service to be live streamed at the family's request.

A reception can be held next door at The Thames on Kirkwood, giving mourners the opportunity to share memories, and continue to celebrate the life of someone they cared about. Complimentary car parking is available for patrons in Kirkwood Street.

Thames Valley Crematory is on Kirkwood St alongside Forever Pets in the former Judd's Foundry building.

Adrian is delighted to be able to offer local cremations at a significantly reduced price with a new, innovative human cremator.

To help with the healing process, families are given the opportunity

to say a final goodbye at the crematorium, if they so wish.

For those little companions who have a bit more fur and a few more legs, there is Forever Pets to help your beloved pet cross over the rainbow bridge.

Using one of the most technically advanced pet cremators in the world, Forever Pets has a strong reputation for delivering a truly empathetic, respectful individual pet cremation service with high standards and genuine care.

It is hard when you lose a devoted family member or beloved pet, but there is no one more reliable than the team at Twentymans and Forever Pets to look after you and your family in your time of need.

Give them a call on 07 868 6003.

A range of menus on offer

Orchard Providores are the catering team behind The Public Office restaurant based in Ngatea, providing catering for weddings, corporate functions and private events. We have a range of traditional, casual and gourmet menu options that you can choose from to best suit your event.

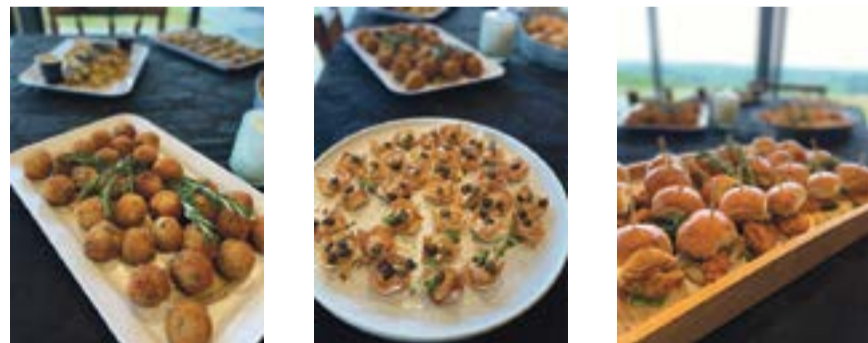
All of our food is handmade by our team of chefs using fresh ingredients to make beautiful cuisine that extends beyond traditional afternoon teas and finger food. Our offerings range from delicious mushroom arancini with truffle aioli to traditional club sandwiches filled with the freshest ingredients to our delectable salted caramel and chocolate brownie. Part of our complete service is to present our cuisine beautifully as well as

serving tea, Allpress percolated coffee and orange juice directly to your guests.

Our professional service aims to reduce the pressure during an emotional time. We offer a range of menu options to suit various venues and budgets. Keep it simple and give us the number of people you would like to cater for and we will provide a variety of finger food or work with us to create a bespoke menu that may include some of your loved one's favourite treats. We offer a range of service options depending on your needs and can tailor these to work for you. Orchard Providores are passionate about creating contemporary catering with fresh and vibrant flavours. Our capable team can take care of everything on your behalf so you can focus on what matters most.

Catering Weddings Corporate & Private Events

Orchard Providores are passionate about creating fresh contemporary menus that work for all occasions.



10 Orchard Road West | Ngatea | p: 07 867 7714
e: eat@orchardprovidores.co.nz

@orchardprovidores @orchardprovidores



Thames Workingmen's Club Inc.



Committed to supporting the local community of Thames the "Workies" offers to members and non-members function facilities Monday – Saturday from 11:00am:

- Bar
- Catering
- Wheelchair access
- Own choice of background music
- Large screen "SMART" TV for own slideshow

For further information contact:



Thames Workingmen's Club
407 Cochrane Street, Thames.
Tel: 07 868 6416
Email: info@thsworkers.co.nz

The final FAREWELL



The Thames Workingmen's Club in Grahamstown.

A great place to meet

Located on the corner of Cochrane and Kirkwood Streets, the Thames Workingmen's Club has long been recognised as a place to meet with friends and family to talk through the journey of life.

Family members of those who have passed have found comfort in going to the Club to farewell their loved ones; however, the facilities are not limited to Club members only. As part of the Club's commitment to the community it is also available to non-members. Subject to availability, the Club's air-conditioned fa-

cilities are available Monday to Saturday from 11am. Offering a bar and a commercial kitchen, catering can be provided to suit most budgets.

Loved ones are often remembered by the music they liked to listen to - with access to most of the music ever recorded, the Club will willingly have this music playing in the background.

The Club is there to help and will endeavour to keep the organising of a gathering as simple and stress free as possible.

Contact should be made by calling 07 868 6416.

Getting your affairs in order

Death can be an unpleasant topic, but it's an important one often avoided by New Zealanders, particularly those aged under 40. When a young person passes away, they often do so without a will.

Although talking about your own mortality can feel uncomfortable, knowing you have a valid will can provide you and your family with the peace of mind that your final wishes are known and will be followed.

When thinking about a will, there are several important things you need to consider. All will-makers must appoint an executor and a trustee. An executor obtains probate for your will from the High Court and your trustee carries out your wishes. Although the executor and trustee are separate roles, you may appoint the same person to fulfil both.

A family member is often appointed to these positions, however, it's important you think about whether a person is suitable for such a role, bearing in mind that grief can affect people badly. The last thing you want is for it to cause strain on your family's relationships or cause unnecessary friction.

If you choose not to have a family member or if the distribution of your estate is likely to be complicated, another option is to appoint your lawyer or a trustee company.

The next thing you need to do is



Writing a will is important, even if you're young.

decide what your final wishes are. Your will instruct your trustee to distribute your estate to whomever you wish.

This may include leaving your property to your partner, children, grandchildren, other family members or friends you wish to provide for, or you can also leave some of your property, money or other assets to a family trust.

Items such as cash, jewellery, artwork or furniture can be left to particular friends or family members and money to a specific charity or organisation.

Make sure you give instructions to your executors if you own a business, and tell them whether you'd

like to be cremated or buried, and how you would like your funeral to be conducted.

Money is the last thing people want to think about when grieving but there are expenses, such as funeral costs, that will need to be taken care of. Funerals can cost thousands of dollars. If it's unlikely your estate could cover your funeral costs, preparing for the future will save your loved ones unnecessary financial strain.

The same can be said if you are servicing a mortgage. You may want to ensure that you have insurance cover for your mortgage and also have income protection insurance for your partner and/or children.

Lets talk to create a meaningful farewell for you & your loved ones



Our family serving yours — in the Hauraki & Thames Corromandel Districts

TALK TO US ABOUT

- Pre-Planning
- Direct Cremation
- Traditional & Bespoke Funerals

Ph: 0800 862 6362
valleyfuneralservices.com

Des & Christine Necklen
Funeral Directors



Let GBD help celebrate your loved one's life.



We cater or we can accommodate up to 120 people in our large function room.

700 Pollen St, Thames
Phone 868 6008

E: gbd@thejunction.net.nz

W: thejunction.net.nz



GrahamstownBarAndDiner

The final FAREWELL



Don't leave it to chance

We're all going to die. Dress it up any way you like, it's an inescapable fact.

Therefore - don't leave a mess. If you own property, make a will. Whether you have a family or not, make sure you have given proper written instructions about what is to happen with your property. You accumulate it while you're alive, and it is really the only thing you can control or influence when you die.

The best approach is to think in these terms of the following questions:

- When I die, what do I want to happen to my property?

- Who do I want to appoint to make sure that happens?

- If that person or those people are also dead, who do I want to replace them?

- If any beneficiary has died, who gets their share?

When you have answered those questions, see a lawyer. Lawyers have the skills to draft wills in terms that you want. In an increasingly complex world, they can also point out to you what problems you might create if you don't consider the rights of other people who may have an interest in your estate.



Graham O'Brien

Spouses, children, de facto partners - all have different potential rights. Don't make the mistake of thinking nobody can challenge your Will.

Wills are also living documents. They need to be revisited regularly to make sure they still answer the questions above.

Everybody has heard (or read about) a horror story when family members contest estates.

Sometimes all the skill in the world cannot prevent such behaviour. But careful planning, and consultation with your lawyer, can reduce the risk.

Don't leave it to chance.

- Graham O'Brien
Director, Insight Legal Ltd

Cremation or burial?

It's probably the biggest decision you're going to make when it comes to making funeral plans.

What's better - burial or cremation? The truth is, there's no easy answer. Both options have their pros and cons but in reality, the decision will come down to what's right for you and your family. This will be based on your budget, personal beliefs, religion, and other factors.

There is no right or wrong choice when it comes to choosing between either being buried or cremated. From a legal point of view, both options require a different course of action.

In New Zealand, burials are constrained by law to official cemeteries and traditional burial grounds, which means you will need to buy a burial plot. Either you or your funeral director can contact the local authority that governs the cemetery of your choice and advise on the availability, cemetery restrictions and costs.

There will be a plot purchase fee, an additional cost for the opening and closing of the grave and any supplementary fees such as a lowering device, short notice, Saturday or public holiday fees. For a burial, you can also arrange a memorial stone with a monu-



Burial or cremation - have you decided? Photo: Albrecht Fietz/PIXABAY

mental mason to be placed at the grave site at a later time. Check with your local council for any terms and conditions about what type of headstone or commemorative plaque you can have.

The rate of cremation in New Zealand is in the range of 70 - 80 per cent, and is the predominant means of disposing of our dead.

Cremation can usually take place before or after the service has been held. Funeral or memorial services can take place at most venues, whether it be a funeral home chapel, a church, private residence, sport club, community

hall, indoors or outdoors. Ashes are normally available for collection a few days after the service but in some cases can be sooner by prior arrangement. Ashes can be divided up if required, and there are some restrictions about where you can dispose of ashes.

All local authorities make provision for ash interments in their cemeteries, or they can be scattered at a place of significance to the deceased.

In all cases, unless the land is owned by the family, permission should be sought from the landowner, local authority or iwi.



Insight Legal

PRACTICAL | AFFORDABLE | LOCAL

GRAHAM O'BRIEN

Council Building, Ngatea

P: (07) 867 7014

E: gobrien@insightlegal.co.nz

- **Avoid the pitfalls of not planning**
- **Over 100 years' combined experience in Wills and Estates administration - and estate disputes**
- **Comprehensive advice**

www.insightlegal.co.nz

Man injured in firearm incident



As part of a Valley Profile series, **MEGHAN HAWKES** searches through old newspapers to bring you the stories Thames Valley locals once read about themselves.

1899

An unusually thick fog settled over the Hauraki Gulf and Coromandel harbour and a gentleman who was on the Tokatea Range described it as singularly beautiful. The sky was clear overhead, and the sun shone brilliantly on the white, foamy-looking mass, the dark tops of the isles of the Gulf and the peaks of the foreland forming a charming contrast.

A man named John Davis had a very narrow escape while out curlew shooting at Miranda.

He was preparing to cross the mud in search of birds and laid his gun against a wire fence. A slight breeze was blowing, which shook the wire and the gun fell to the ground and went off inflicting a nasty wound in his back. He was brought over to Thames in the steam launch *Planet* and conveyed to the hospital. It was a marvel that he escaped with his life, as had the charge entered a little higher it would have probably



Matatoki in 1920.

Photo: SUPPLIED

touched a vital spot.

An important function took place at Netherton when the newly constructed pontoon was declared open for traffic.

Councillor Moore, member for the Netherton Riding, said the punt brought Netherton within 1½ miles of Paeroa, the nearest market for the produce of thousands of acres of land. Mrs Moore then christened the pontoon the *Advance*.

Various dignitaries and visitors were the first to cross the river in the new craft. The vessel crossed the water automatically, being constructed so that the river currents moved it. After several speeches and a song by Councillor Stackpole, an abundance of viands were produced and done ample justice to. The company broke up with three cheers for Councillor Moore.

Michael McMahon, of Tapu, had the honour of growing the largest kumara and potato of the season.

The kumara turned the scale at seven pounds, while the potato weighed six pounds and

one ounce. This spoke volumes for the suitability of the soil of the Tapu district. Both "giants" were able to be viewed at the office of the *Thames Advertiser* by anyone interested.

Considerable complaints were made at the manner in which Paeroa's streets were lighted. There were only three street lamps, and while lighting their own particular locality, they only made the darkness more conspicuous in other parts. The County Council decided to erect five more lamps, and with eight incandescent lights, Paeroa would be fairly well lighted.

A very successful meeting of settlers was held at Puriri regarding a creamery proposed for Matatoki. The full number of cows required to start with, 310, was reported to be available. The establishment of the creamery would be a great boon to the settlers. The Thames County Council planned to start work on the main Matatoki Road at once as a number of people were buying land and settling down in the vicinity.

Gr8 Job Hauraki hailed a success

CONTINUED FROM P3

offer employers the reassurance that Emma had what it took to be successful, and Murray Bain of Coastal Bins, Emma's new employer, couldn't agree more.

"Emma's background running her own cleaning business really shows in her meticulous attention to detail and time management. And she's a capable and responsible driver of our trucks," he said.

"In fact, we gave her the keys to a truck dedicated to her own routes recently. If I get the opportunity, I would hire another Emma in a heartbeat."

Thirty-two people are now in new jobs through collaboration and funding from the Ministry of Social Development and the combined efforts of Gr8 Job Hauraki, local employers and businesses, and social organisa-

tions operating in the district. Support available from Gr8 Job Hauraki includes entry-level training, wage-based incentives, and other support for job seekers and businesses looking to take on staff.

And for Emma, the support was just the boost she needed to steer herself into a whole new career.

"After my accident, I really had to think about what I could do. One thing I definitely didn't want to do was sit on the couch for the rest of my life," she said.

"Now I feel like there's no stopping me."

Hauraki District Council encourages local employers and job seekers to contact Julie Stephenson on 021 536 715 or email Julie.Stephenson@hauraki-dc.govt.nz to find out how Gr8 Job Hauraki can help more businesses and people find their fit.



Emma Hall is now back in the work force after a bad an accident.

/Richardsons

Paeroa / Ngatea

10 Taniwha Street, Paeroa Offers Over \$799,000

NEW LISTING

Upon entry via a formal foyer this home includes light & bright open plan living, fabulous entertainers' kitchen with modern appliances, separate good-sized office plus an additional formal lounge providing for multiple living spaces. Two double brms, plus large master with ensuite & walk-in robe.

RG1923 - KYLIE HEDGES 027 210 2996 🏠 3 🛏 2 🚗 2 🚗 2

389 Back Miranda Road, Waitakaruru Offers Over \$950,000

NEW LISTING

Set on a quiet back road you will find this 5000m2 (subject to survey) property with spectacular views. Huge 5 bedroom home in original but tidy condition. Sunny lounge. Freestanding fire & two heat pumps. Family bathroom. Mega storage with a double garage plus work shop & a 3 bay garage.

RN1377 - AVALON PASCOE 0275 689 707 🏠 5 🛏 1 🚗 5 🚗 1

/Richardsons

Thames

712 Mackay Street, Thames \$599,000

OPEN HOME SAT & SUN 12-12:30PM

1900's Villa situated in a sunny spot close to town. Large living area, separate dining & original joinery. Generous back yard with single garage.

RT5638 🏠 4 🛏 1 🚗 1 🚗 1

9/709 Thames Coast Rd, Thames \$175,000

OPEN HOME SAT & SUN 1-1:30PM

Everybody has to start somewhere. This is a great opportunity for a holiday getaway on the stunning Thames Coast perfect lock up & leave.

RT5635 🏠 2 🛏 1 🚗 1

106 Vanguard Street, Thames \$650,000

OPEN HOME SUNDAY 12-12:30PM

Gorgeous & full of character on Bird On Hand Hill. Elevated views over town & Firth of Thames. Old time character with 2.7m ceilings, warm & cozy.

RT5646 🏠 3 🛏 2 🚗 1

59A Totara Valley Road, Thames \$350,000

1436m2 freehold section recently sub-divided, subject to title. Power & Fibre at gate. Covenants in place to ensure a continuance of quality.

RT5644

PAEROA
07 862 7888
54 Belmont Road
paeroa@richardsons.co.nz

NGATEA
07 867 7800
33 Orchard Road
ngatea@richardsons.co.nz

THAMES
07 868 6978
556 Pollen Street
thames@richardsons.co.nz

Real Estate Ltd MREINZ
Licensed REAA2008

For further properties please visit our website

www.richardsons.co.nz

Real Estate Ltd MREINZ
Licensed REAA2008

The all-new Kia Sportage

Coming early 2022



THAMES VALLEY KIA
321 Pollen Street, Thames

Ph 07 868 8951
Paul Griffin 021 169 4036
www.ThamesKia.co.nz



All New 2021 Toyota Highlander Hybrid

Toyota's Hybrid SUV with AWD,
2,000kg braked towing capacity,
5.6 ltr/100 ks, 7 seats.

*Demos available now.
Book now for a test drive.*

2018 Toyota Hiace, 12 Seater Minibus	\$49,990
2018 Nissan Pathfinder ST-L, 3.5 ltr	\$44,990
2018 Toyota Corolla GX, Auto, Hatch	\$24,790
2018 Toyota Yaris, Sig Class, Auto	\$19,990
2017 Toyota Corolla, GXR, Special Editon Hatch	\$21,990
2017 Kia Rio LX, Hatch, Auto, 1 Owner, NZ New	\$17,990
2016 Hyundai Tucson Elite, AWD, Diesel	\$34,990
2016 Toyota Corolla GX, Sedan, Alloys	\$18,990
2013 Nissan Juke, Alloys, Auto, Red	\$12,990
2011 Nissan, Tiida, ST, 1.8 ltr, Auto	\$9,990
2004 Toyota Prado, VX, 4wd, V6 Petrol, Towbar	\$18,990

2019 Toyota Corolla GX, Hatch	\$25,990
2018 Toyota Corolla, Hatch, Auto	\$24,990
2018 Toyota Yaris GX, Sig Class	\$19,990
2018 Toyota Corolla GX, Alloys, 1.8 ltr, Auto	\$19,990
2017 Toyota Corolla GLX , Auto, Alloys, Sedan	\$21,790
2014 Mazda Demio, Hatch, Auto	\$10,990
2013 Toyota Hilux SR5, 3.0TD, 4WD	\$42,990
2013 Toyota RAV4 GX, 2.5P, Towbar	\$19,990
2012 Kia Rio EX, Hatch	\$11,990
2006 Toyota Allion, 2.0L Auto sedan	\$7,990

Valley Toyota Thames

www.valleytoyota.co.nz • 07 868 8950

Contact - Karl Richards 0274 084 564

Finance - Terry Boswell 0210 445 929



Tony Richards Toyota Paeroa

www.richards.toyota.co.nz • 07 862 7674

Contact - Kent Ravenhill • 027 878 0642

Finance - Kent Ravenhill 027 878 0642



**PHONE US
to view
by appointment**
*Come and experience
the difference!*

STAGE 1 IS NOW COMPLETE ENQUIRIES FOR STAGE 2 ARE WELCOME!

All apartments are within walking distance to Thames' shops, cafes and walkways.
The perfect location to enjoy your fun-filled retirement
Our open plan, single level apartments feature covered balconies with fantastic views of the sea, Kauaeranga River and mountains.
Each unit's elegantly finished kitchen, lounge, bedroom and bathroom offer stylish warmth and light.
All residents enjoy scenic views from each level's shared lounges, use of the Village Community Lodge and participation in all activities and amenities at your leisure.

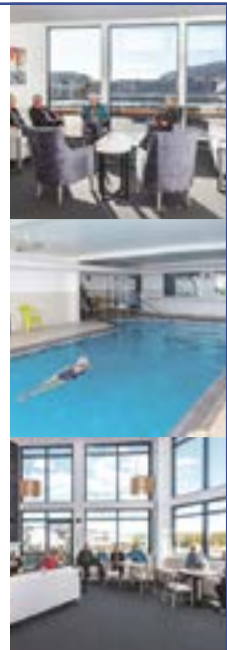


*Richmond
Villas*
LIFESTYLE VILLAGE

*Living the lifestyle,
loving the choice...*
**A lifestyle village in
Thames on the Coromandel**



82 Richmond St, Thames 0800 868 5484 www.richmondvillas.co.nz



SUDOKU

Fill the grid so every row, every column and every 3x3 box contains the numbers 1-9

		9					2	3
1		7		4				
	3		5			7		4
3	9		1	2		6	8	
			3		7			
	1	4		6	9		5	2
8		3			1		6	
				8		1		5
9	2					4		

EASY

		3	1					
					5			8
8	6			7				9
		8		5	6			3
7	2						4	5
3			8	4		1		
	4			3			8	6
6			9					
					1	7		

MEDIUM

	2		5		4	1		
9		7		8		4		
		5		7				8
		4						
1	8						4	7
						2		
	9			4		7		
		2		1		8		5
	6	3		2		1		

HARD

11

HARD

3	2	8	5	9	4	1	7	6
9	1	7	6	8	3	4	5	2
6	4	5	2	7	1	3	8	9
2	6	4	1	3	7	5	9	8
1	8	3	9	2	5	6	4	7
7	5	9	4	6	8	2	3	1
5	9	1	8	4	6	7	2	3
4	3	2	7	1	9	8	6	5
8	7	6	3	5	2	9	1	4

MEDIUM

9	5	3	1	8	4	6	7	2
2	7	4	6	9	5	3	1	8
8	6	1	2	7	3	5	9	4
4	1	8	7	5	6	9	2	3
7	2	6	3	1	9	8	4	5
3	9	5	8	4	2	1	6	7
1	4	8	9	5	3	7	2	6
6	3	7	9	2	8	4	5	1
5	8	2	4	6	1	7	3	9

EASY

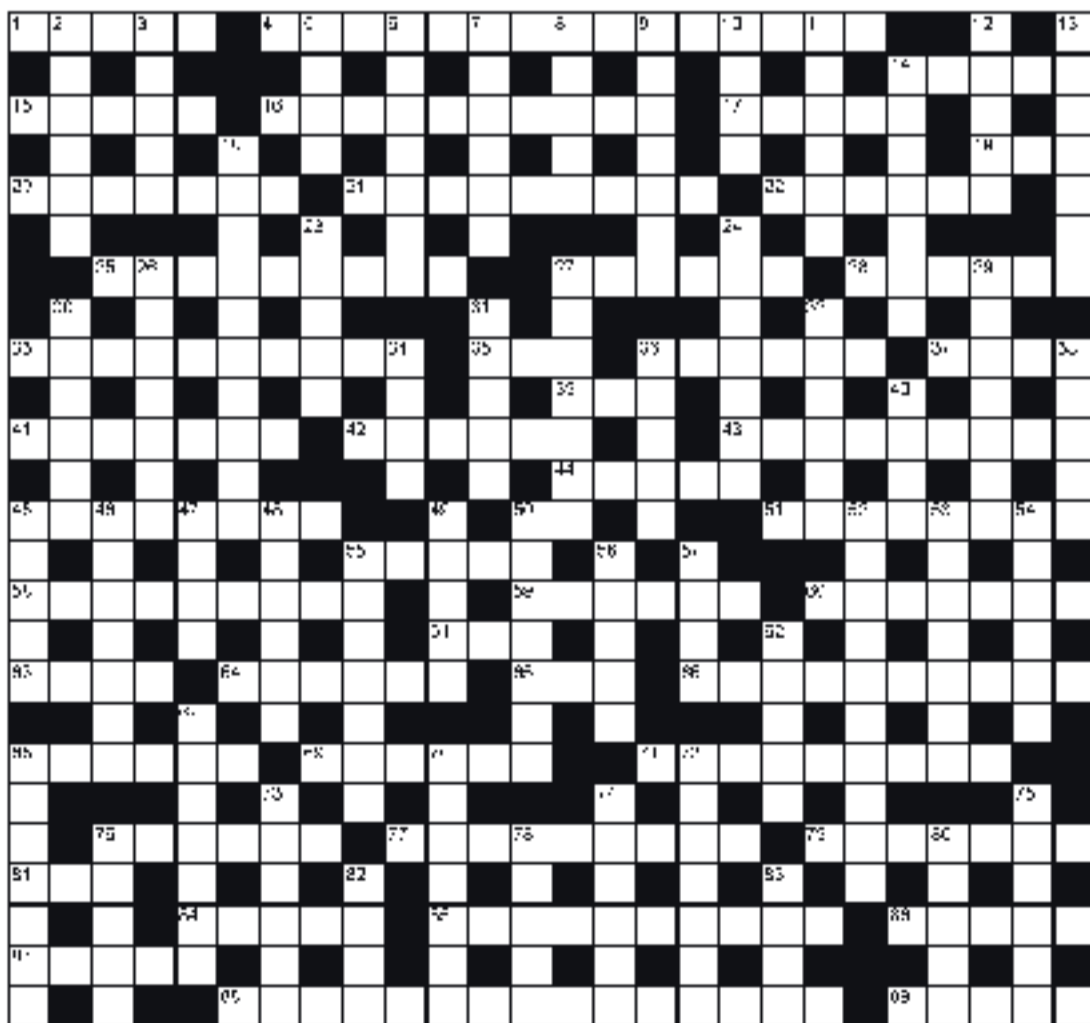
5	4	9	7	1	6	8	2	3
1	8	7	2	4	3	5	9	6
6	3	2	5	9	8	7	1	4
3	9	5	1	2	4	6	8	7
2	6	8	3	5	7	9	4	1
7	1	4	8	6	9	3	5	2
8	5	3	4	7	1	2	6	9
4	7	6	9	8	2	1	3	5
9	2	1	6	3	5	4	7	8

Puzzles © The Puzzle Company
www.thepuzzlecompany.co.nz

JUMBO CROSSWORD

31

- ACROSS**
- 1 Form (5)
 - 4 Just beaten (6,2,3,4)
 - 14 Twelve dozen (5)
 - 15 Wee (5)
 - 16 Secret plot (10)
 - 17 Dutch cheese (5)
 - 19 Hair cream (3)
 - 20 Title (7)
 - 21 Mice in cat (anag)(9)
 - 22 Gives up (6)
 - 25 Accumulated learning (9)
 - 27 Zoo employee (6)
 - 28 Bee bunches (6)
 - 33 Television, radio advertisement (10)
 - 35 Luminous electrical discharge (3)
 - 36 Drew forth (6)
 - 37 Footfall (4)
 - 39 Young goat (3)
 - 41 Undress (7)
 - 42 Plaster wall coating (6)
 - 43 Animal snare (9)
 - 44 Nourishes (5)
 - 45 Of minimum size (8)
 - 50 Representing (2)
 - 51 Criminal (8)
 - 55 Wanderer (5)
 - 58 Put into a new order (9)
 - 59 Not clear (6)
 - 60 Childbirth assistant (7)
 - 61 Black sealant (3)
 - 63 Court order (4)
 - 64 Steady in position or balance (6)
 - 65 Paddle (3)
 - 66 Scared (10)
 - 68 Slum (6)
 - 69 Shipping boxes (6)
 - 71 Secretly sheltered (9)
 - 76 Spider's trap (6)
 - 77 Asylum (9)
 - 79 Untighten (7)
 - 81 Cereal crop (3)
 - 84 Mistake (5)
 - 85 Devised, thought up (10)
 - 86 Cat type (5)
 - 87 Relieves (5)
 - 88 Remote inaccessible place (3,4,2,6)
 - 89 Soft hat (5)
 - DOWN**
 - 2 Shakespeare play (6)
 - 3 Went ashen (5)
 - 5 Household appliance (4)
 - 6 Forcing (7)
 - 7 Nonsense (6)
 - 8 Jewelled headdress (9)
 - 9 Erratic, out of control (7)
 - 10 Porcine creatures (4)
 - 11 Artist's workshop (6)
 - 12 Forceps (5)
 - 13 Futile (7)
 - 14 Scaffold (7)
 - 18 Responsible to or for (10)
 - 23 Ledger entry (5)
 - 24 Turns over a new leaf (7)
 - 26 Run lame (anag)(7)
 - 27 Match start (4-3)
 - 29 Gave up work (7)
 - 30 Platform (6)
 - 31 Spear (5)
 - 32 Brush-off (6)
 - 34 Auction items (4)
 - 36 Borders (5)
 - 38 Scholarly article (5)
 - 40 Wine and dine (4)
 - 45 Scatter (5)
 - 46 Greed (7)
 - 47 Attract (4)
 - 48 Musical composition (6)
 - 49 Hit (5)
 - 50 Having a characteristic smell (7)
 - 52 Yours ____ (10)
 - 53 Not in any place (7)
 - 54 French tower builder (6)
 - 55 Very young baby (7)
 - 56 Sword (5)
 - 57 Chasm (4)
 - 62 Arms, legs (5)
 - 67 Bat less (anag)(7)
 - 68 Reticent (7)
 - 70 Street movement (7)
 - 72 A dry ale (anag)(7)
 - 73 Quest (6)
 - 74 Residential district (6)
 - 75 Small stone (6)
 - 76 Discontinue (5)
 - 78 Collector's item (5)
 - 80 Mania (5)
 - 82 Sea creature (4)
 - 83 Eager (4)



PREVIOUS SOLUTION

ACROSS: 1 Fraud, 4 Marching orders, 11 Least, 14 Stick, 15 Archipelago, 16 Occasion, 19 Freeway, 20 Abyss, 21 Elongated, 24 Pirouette, 26 Betray, 27 Ascend, 31 Guess, 32 Coleslaw, 34 Futuristic, 38 Essence, 39 Sprint, 40 Untidy, 41 Tsar, 42 Distant, 45 Bloodhound, 50 Ammonia, 54 Aria, 55 Intone, 56 Unlock, 57 Recycle, 60 Earthquake, 61 Long shot, 62 Split, 65 Copper, 66 Decoys, 67 Acoustics, 72 Saltpetre, 73 Drawn, 74 Marbles, 79 Close-ups, 80 Incredulous, 81 Maybe, 82 Lifts, 83 Plumb the depths, 84 Short.

DOWN: 2 Retire, 3 Uncle, 5 Airs, 6 Cohabit, 7 Impose, 8 Gull, 9 Regulate, 10 Social, 11 Leadership, 12 Acid, 13 Tangled, 17 Rayon, 18 Infatuated, 22 Venom, 23 Jettison, 25 Inspect, 26 Bewitch, 28 Muesli, 29 Albino, 30 Tundra, 33 Expel, 35 Circa, 36 Icon, 37 Guru, 42 Drake, 43 Stirrups, 44 Tongue, 45 Bookkeeper, 46 Owed, 47 Doubles, 48 Oblong, 49 Nicks, 51 Meek, 52 Olympic, 53 Inlaid, 58 Shoemakers, 59 Focus, 63 Doorknob, 64 Strap, 65 Comical, 68 Cowslip, 69 Step up, 70 Traded, 71 Member, 75 Beach, 76 Golf, 77 Arch, 78 Ouch.

Plan your spring garden

Spring is on its way, the days are starting to lengthen and there's a bit more heat in the sun. It's a good time to get the tools out of the shed, give them a clean if need be, and get a head start on planning and creating your spring garden.

VEGETABLES

Prepare the garden for spring planting by digging in compost and lime. Potato time – Seed potatoes are available for planting during late winter. They like slightly acidic soil with good moisture levels. Dig in Blood and Bone to improve soil structure and attract earthworms. Plant about 15cm deep and apply 5cm layer of mulch. Once sprouts start to show apply an additional 15cm mulch to protect from sunlight. Place the seed potatoes in a well-lit position out of direct sunlight to sprout (chitting) prior to planting. Continue harvesting existing crops of carrots, parsnips, celery, leeks, lettuce, cabbage, cauliflower, spinach and start planting out more cut and come varieties of lettuce. The arrival of August means you can start off tomato seeds on a warm windowsill in a garden shed or under a cloche so the seedlings are ready to plant out once the last frosts have passed. Rhubarb – Divide old clumps which have wintered over. Plant out pieces containing new green shoots.

Weed and gently cultivate around your plants. Trim back old plants to stimulate fresh growth.

FLOWERS

Start planting gerberas, marigolds, hellebores, azaleas and daphne while conditions are right. If it is warm enough, gladioli corms can be planted out. Keep beds well weeded and mulch where possible. It is not too late to plant a new rose but don't leave it any longer than August. They like sun, good air flow and when planting, a seaweed tonic. This promotes good



Prepare your potato patch now.

root growth. As existing plants awaken from their winter hibernation, it's time to feed them to prepare for the flurry of new growth. Give shrub roses a good prune to around knee height and remove dead stems and mulch. Spray with a Lime sulphur concentrate to prevent infestation.

FRUIT

A good copper spray now will help prevent a lot of fungal and bacterial diseases on your pip fruit trees, stone fruit and berry plants later in the season. Repeat weekly; especially if you had a problem last season until the little green tips of the leaves start to appear. Always remember to clean up leaf drop around plants to avoid spreading diseases. Mulch around the base of your fruit trees after cleaning up leaf drop. Prune your feijoas to encourage a healthy fruit crop for next season.

COMPOST HEAP

Aerate compost heaps to encourage rapid breakdown. Add your prunings to keep the worms well fed.

LAWN CARE

Spreading a Lawn Fertiliser over the lawn in late winter will provide a rich source of nutrients which will nurture and improve the soil structure and the integrity of the lawn.

- Ngatea Garden Circle

THE ONLY THING GREATER THAN OUR RANGE, IS OUR SERVICE & ADVICE

Winter is a great time to get servicing done before the spring rush

SHOP ONLINE www.stihlshop.co.nz | HOME DELIVERY AND CLICK & COLLECT OPTIONS AVAILABLE

STIHL SHOP

LOVE YOUR LAND

STIHL SHOP THAMES
 317 POLLEN STREET THAMES,
thames@stihlshop.co.nz
 PH 07 868 8730

Gilmer Farms
 We have a great range of
Potted Spring bulbs
 Find us at Thames market
 (weather permitting)
 For more information...
Ph 029 870 4433
 Email: gilmerfarms1nz@outlook.com

Monday	Tuesday	Wednesday	Thursday	Friday	Saturday	Sunday
30 Non planting Day	31 Non planting Day	August 2021 Moon Planting Calendar				1 Plant root crops, trees and shrubs
2 Plant root crops, trees and shrubs	3 Non planting Day	4 Non planting Day	5 Plant root crops, Liquid Feed	6 Plant root crops, Liquid Feed	7 Plant root crops, Liquid Feed	8 Non planting Day
9 New Moon	10 Non planting Day	11 Non planting Day	12 Plant above ground crops	13 Plant above ground crops	14 Plant above ground Crops, Liquid Feed	15 Plant above ground Crops, Liquid Feed
16 Plant above ground Crops, Liquid Feed	17 Non planting Day	18 Non planting Day	19 Plant above ground crops	20 Plant above ground crops	21 Non planting Day	22 Non planting Day
23 Full Moon	24 Plant root crops, Liquid Feed	25 Non planting Day	26 Non planting Day	27 Non planting Day	28 Plant root crops, trees and shrubs	29 Plant root crops, trees and shrubs

AUGUST GARDENING AT
New Season Stock Has Arrived At Aeroview

Citrus

Fruit Trees

Roses

Strawberries

382 Ngati Maru Highway
Totara, Thames
OPEN 7 DAYS
WINTER hours June & July
Monday-Friday 8.30am to 5pm
Saturday & Sunday 8.30am to 4pm
Ph 868 7960

CLASSIFIEDS CALL THE EXPERTS

Public Notices
 Paeroa Blue Light AGM
 Thursday 29 July
 5.30pm
 L&P Cafe
 All welcome!

Trades & Services
 Chimney sweeping & safety checks repairs.
 Call Rich & Terry 027 424 4217 or 07 8682561

Wanted to Rent
 1-2 bedroom flat in Thames. Single adult, sober habits. Phone 022 375 6679

Wanted
 Bottles, tins, coins, signs, tools, estate lots Ph 021 060 7659.

ARBORIST

TREE SHAPES
 Qualified Arborists



- Treework Large & Small
- Stump Grinding
- Mulch Supplies
- Wood Splitting
- Chipping
- Hedge Trimming
- Fruit Tree Pruning
- Powerline Clearance

For a free quote call
07 868 3985
 or **0274 726627**

BUILDING SUPPLIES

For all your building supplies
 Trade welcome
 79 Kopu Rd, Thames
 Phone 868 0130

PlaceMakers

ELECTRICIAN

- Rural & Dairy
- Residential
- Industrial
- Commercial
- Heat Pumps
- Service & Maintenance

ngatea@laserelectrical.co.nz
Electrical Laser (07) 867-7049
 "Totally Dependable"

CLEANING

A J CLEAN UP CREW

- Lawn mowing
- Weedeating
- Hedge & tree trim
- Section clearing
- Gardening
- Rubbish removal
- Interior house clean
- New build clean/clear
- Odd jobs considered
- One off jobs welcome

0800 464 898
 Alaine Hedges 027 242 7268
 John Hedges 027 457 2018
 Email: info@ajcleanupcrew.co.nz

CONTRACTING

RCC

07 862 4809 021 307 029
MARATOTO RD RD4, PAEROA
 1.7 - 4.5 - 9 TONNE DIGGER

METAL / TOP SOIL / FILL SUPPLIES
 FARM DRAINS / RETAINING WALLS
 BULK SPREADING OF LIME AND FERT
 DRIVEWAYS / FOOTPATHS

IT

T.A.B.S TECH & ADMIN BUSINESS SUPPORT

IT SUPPORT
 XERO, MYOB
 ADMIN
 WEBSITE
 DEBT COLLECTION
 HOT DESKS

www.tabs.net.nz

LEGAL & BUSINESS CONSULTANT

Need help with legal & court proceeding?
 Contact Susanna for a quote

- Divorce
- Probate
- Business
- Dispute

Susanna Kruger
 Ph: 027 538 9789
 E: susannakruger20@gmail.com

FUNERALS

Valley FUNERAL SERVICES

FUNERAL DIRECTORS
 Our family serving yours — in the Hauraki & Thames Coromandel Districts

- Traditional and Bespoke Funerals
- Direct Cremation
- Pre-Planning

Ph: 0800 862 6362
 Des & Christine Necklen
 Funeral Directors



HIRE CENTRE

THAMES HIRE CENTRE
 Jellicoe Crescent, Thames

Perrin Newland
 Telephone: 07 868 9350
 Email: hire@thameshire.co.nz
 www.thameshire.co.nz

HOME HANDYMAN AND COMMERCIAL HIRE

PAINT

- Quality • Paint • Colour • Advice
- Wallpaper • Accessories

Come in and see our friendly team at
 Thames Resene Colorshop
 Locally owned & operated
 Cnr Queen & Pahau Sts
 Ph 868 6644

Resene
 the paint professionals use

PLUMBER

Servicing Thames & Surrounding Areas

Contact
 Richard Battson
 027 666 3606
 "For All Your Plumbing Needs"



PLUMBER

Plumbing Laser Thames

PLUMBING • DRAINAGE • GASFITTING
 GENERAL MAINTENANCE
07 868 6021
 thames@laserplumbing.co.nz
 "Covering The Valley"

MOTORCYCLE

PENINSULA MOTORCYCLES

CFMOTO
 GBR-BRM

PARTS & ACCESSORIES: ROAD-ATV-OFFROAD
 ROAD & OFFROAD APPAREL
 ALL REPAIRS & SERVICING
 PH: 868 6104 021 176 6859

RUBBISH REMOVAL

Smart Bins

Skip bins, Wheelie Bins,
 Farm Bins

Phone us or book online
 0800 4 MY BIN or
 07 868 6106
 www.smartbins.co.nz

SIGNS

SIGN DESIGN PRINT

Professional Sign & Design Service

- Logo Design & Company Branding
- Vehicle Graphics
- Directional & Information Signs
- Shop & Site Signage
- Footpath Signs
- Banners
- Business Cards

VALLEY SIGNS

13 Francis Street, Paeroa 3600
 07 862 8290
 valleysigns@xtra.co.nz
 0210 6777 02

WATER FILTRATION

MOBILE On-Site Service
 SALES • INSTALLATION • SERVICE

Water Filters, Whole House, UV Filter Systems, Contaminated Water Drinker

Coromandel Sales & Service Call Earle 027 222 8767
 We Service All Leading Brands! www.aquafilter.co.nz



CALL THE EXPERTS

Advertise with *The Valley Profile* and reach the customers you want to target

12,500 copies delivered to every letterbox in the Thames Valley every Wednesday, plus bulk distribution around the Coromandel Peninsula

Contact us today to find out more
 Nikki@valleyprofile.co.nz | 022 130 3885

SPECIAL OFFER
 Sign up for six months and get:

A single advertisement from just **\$30 + GST**

A double advertisement from just **\$60 + GST**

Terms & Conditions apply

CLASSIFIEDS

Situations Vacant



THE BOOMS AND TARARU CARE HOMES - THAMES REGISTERED NURSE

We have full time opportunities for experienced Registered Nurses with our Bupa Care Homes – The Booms and Tararu, both located in Thames. Bring your enthusiasm, care and passion for making a difference in the lives of our residents. Use your leadership skills to manage a team and mentor and support others.

What can Bupa provide you?

- Comprehensive training and education including assistance with NZQA qualifications (Health & Wellbeing L2-L4)
- Competitive pay rates
- A supportive environment in a well-appointed care home environment.
- Additional parental leave
- 10% off Bupa dental and a number of health and wellbeing product discounts
- A safe and supportive environment that encourages diversity and inclusiveness
- Free parking

What Bupa is looking for?

- Enthusiasm, care and passion for making a difference to residents
- Ideally, you'll have an NZQA (or equivalent) qualification in Health and Wellbeing but this is not mandatory. Comprehensive training will be provided
- The ability to work rostered and rotating shift (including weekends) must be able to work AM, PM and night shifts
- Reliable transport or travel arrangements

Bupa is one of the country's leading health and care organisations that employs more than 4,000 people in New Zealand. Our purpose is to help people to live longer, healthier, happier lives – something we want you to be part of.

Applications can be submitted online via bupa.qjumpersjobs.co

Or call Prue Walker 027 284 5793 or email your CV to recruitment@bupa.co.nz

We are Bupa

Public Notices

HAURAKI DISTRICT LICENSING COMMITTEE

Public Notice of application for Off-Licence

Section 101 Sale and Supply of Alcohol Act 2012

Mowaman 2020 Limited, 25 Orchard West Road, Ngatea, (owner), has made application to the District Licensing Committee at Paeroa for the renewal of an Off Licence in respect of the premises situated at 25 Orchard West Road, Ngatea known as Ngatea Four Square.

The general nature of the business conducted under the licence is Grocery Store.

The days on which and the hours during which alcohol is sold under the licence are: **Monday to Sunday 7am to 7pm.**

The application may be inspected during ordinary office hours at the office of the Hauraki District Licensing Committee, William Street, Paeroa.

Any person who is entitled to object and who wishes to object to the grant of any application may, not later than 15 working days after the date of the first publication of this notice, file a notice in writing of the objection, with the Secretary of the District Licensing Committee at:-

To: The Secretary of the District Licensing Committee, Hauraki District Council, PO Box 17, PAEROA 3640.

No objection to the issue of a licence may be made in relation to a matter other than a matter specified in section 131 of the Sale and Supply of Alcohol Act 2012.

This is the second publication of this notice. This notice was first published on July 21st, 2021

HAURAKI DISTRICT LICENSING COMMITTEE

Public Notice of application for Club Licence.

Section 101 Sale and Supply of Alcohol Act 2012.

Kerepehi Bowls & Sports Club Inc, has made application to the District Licensing Committee at Paeroa for the renewal of a Club Licence in respect of the premises situated at 202 Kaikahu Road, Kerepehi, known as Kerepehi Bowls & Sports Club.

The general nature of the business conducted under the licence is Bowls & Sports Club.

The days on which and the hours during which alcohol is sold under the licence are: **Monday to Thursday 8am to 11pm. Friday to Sunday & Public Holidays 8am to 1am the next day.**

The application may be inspected during ordinary office hours at the office of the Hauraki District Licensing Committee, William Street, Paeroa.

Any person who is entitled to object and who wishes to object to the grant of any application may, not later than 15 working days after the date of the first publication of this notice, file a notice in writing of the objection, with the Secretary of the District Licensing Committee at:-

To: The Secretary of the District Licensing Committee, Hauraki District Council, PO Box 17, PAEROA 3640.

No objection to the issue of a licence may be made in relation to a matter other than a matter specified in section 131 of the Sale and Supply of Alcohol Act 2012.

This is the only publication of this notice.



To make sure your business is seen, you need to advertise in the paper that is being read.

Grow your profile

022 130 3885

nikki@valleyprofile.co.nz



Cowsheds, Feedpads, Bunker Roofs

Call us to arrange a visit to discuss your needs
Now is the Time to Plan



HOME PASSENGER ELEVATORS • GENERAL ENGINEERING • TRACTOR FORKLIFTS

45 Reta Crescent, Kerepehi

Phone (07) 867-6712 Mobile (0274) 944-948

www.quinn.co.nz Email: info@quinn.co.nz



Classic to contemporary styling

All aspects of colouring

Blonding specialists

"City styling in the heart of Coromandel"



558 Pollen St, Thames. Phone 868 6105

www.facebook.com/walterandcothames

www.walterandco.co.nz

[Instagram@walter_andco](https://www.instagram.com/walter_andco)



Efficient convenient prescription dispensing

Open Monday to Friday
9am - 5pm
(closed 12.45pm - 1.45pm)

Thames Medical Centre
817 Rolleston Street
Thames

Ph 07 8685100 – Fax 07 2800724
pharmacist@thamescentrepharmacy.co.nz

Our team are locals supporting locals



Selected Works Clare Caldwell

31st July - 1st September 2021

Exhibition opening Saturday 31st July 4.00 - 6.00

Thamesian Art Gallery

533 Pollen St, Thames. Ph (07) 868 5533

www.thamesianart.nz

New competition calls for chess junkies

By KELLEY TANTAU

A battle of wits will play out in Thames next month when men and women of all ages face off across a chess board.

The first ever senior and junior Thames Valley chess championship will be held on August 21, and has so far attracted around 50 players from the district, as well as Te Aroha, Te Kauwhata, Papakura, Papatoetoe, and Tuakau.

Two of the Valley's players set to rise to the occasion are Russell Mercer, president of the Thames Chess Club, and Emma Thorburn, a 15-year-old Hau-raki Plains College student.

"I like the fact that it's a very even start," Russell said about the game.

"I like the battle of wits," Emma added. "Out-strategising someone is the best, and you always have to work for it."

Emma started playing the board game in Year 9, spurred on by a desire to beat a cocky friend. She went on to play her first tournament around three weeks later and won the title of 'Best Girl'. She was unbeaten at the Waikato Regional under 18s during Term 2 this year, and won bronze in the 'Auckland Girls' under 16 competition.

She heads up to Counties Manukau every fortnight to play, and has the dream to one day participate in the sport professionally, while Russell has been involved with the Thames club since its inception more than a decade ago.

The August tournament was



Chess aficionados Russell Mercer, left, Emma Thorburn, and Ron Lanning are gearing up for the TV chess champs.

Photo: KELLEY TANTAU

the brainchild of Ron Lanning, a chess savant from Auckland.

He started playing the game 49 years ago, in much the same way Emma did - wanting to take a mate of his down a peg.

"I went to the school library, got out every book they had, and started studying [chess] until the tide turned." He said much like Emma and Russell, he had a passion for chess. "I really want

to kick off that there is something for players in this region to work towards," he said.

"As I'm finding out, there's a lot more people here that play chess but aren't part of the Thames chess club."

There were a dozen or so players involved in the Thames club, ranging in age from seven onwards.

Both Ron and Russell said it

was great to see young people becoming involved in the sport.

"Size and age really has nothing to do with chess. A young person can beat any person, and that's quite a big plus," Ron said.

"We want to let as many people know that there are opportunities for all ages to be involved in a sport which is not expensive and can be played by anybody."

The tournament is free to en-

ter, yet there will be monetary prizes and trophies up for grabs, as well as the title of Thames Valley champ.

DETAILS: August 21 at the Thames War Memorial Civic Centre from 9.30am. Those interested in participating can contact Ron: email ron-lanning@xtra.co.nz or Ph 027 212 8232. To join or get in touch with Thames Chess Club: email thameschessclub@gmail.com.



Family Business – Family Values

"We are the team to support you on your journey to better hearing"

***FREE hearing checks**

***FREE hearing aid adjustments for new clients**

* Conditions Apply

Total Hearing Care

102 Sealey Street, Thames

Clinics at Coromandel, Paeroa & Pukekohe

If you can't come to us, we can come to you - Home services available.

Phone 0800 326 626

MOH & ACC Approved