

The Valley Profile

100% THAMES

100% LOCALLY OWNED & OPERATED

626 Pollen Street 07 868 6124

TRUST YOUR LOCAL EXPERTS

Totalspan Coromandel 1/46 Kopu Road, Kopu, Thames
P 07 869 0400 E coromandel@totalspan.co.nz

0800 TOTALSPAN
TOTALSPAN.CO.NZ



Interwoven backlash

By KELLEY TANTAU, Public Interest
Journalism funded by NZ On Air

Social media has tarnished the unveiling of a colourful new sculpture designed by late artist Chris Budgen, with two Thames community leaders now calling for users of online platforms to stop the spread of misinformation.

Chris' sculpture - *Interwoven* - has been installed along the Ngati Maru Highway heading into Thames, and an opening event was held on December 2.

At the unveiling was Thames-Coromandel District councillor Martin Rodley and Thames Community Board member and Thames Public Art Trust trustee Rob Johnston.

Both have since become aware of negative comments on Facebook pages, criticising the work for being "very rigid", having "nothing to do with Thames" and being "a significant waste of money" despite it having no financial impact on ratepayers.

"I was at the opening and Isla [May Whinnen-Jensen] played music on the violin to acknowledge her friend Chris, who died a couple of years ago. I guess there was still the memory of that moment, and it was quite an emotional, special moment, and having that be degraded by some of the comments people were making wasn't fantastic," Martin told *The Profile*.

"I was a little sad, having known the history behind the sculpture, and so looking at it from my position and what I knew, and comparing that to the comments from people who clearly knew nothing about it and were just thinking it was a burden on the ratepayer... that made me think: 'That's really a shame people are putting those things out without knowing what was behind it'."

Some of the comments Martin referred to accused council of "wasting ratepayers money on crap".

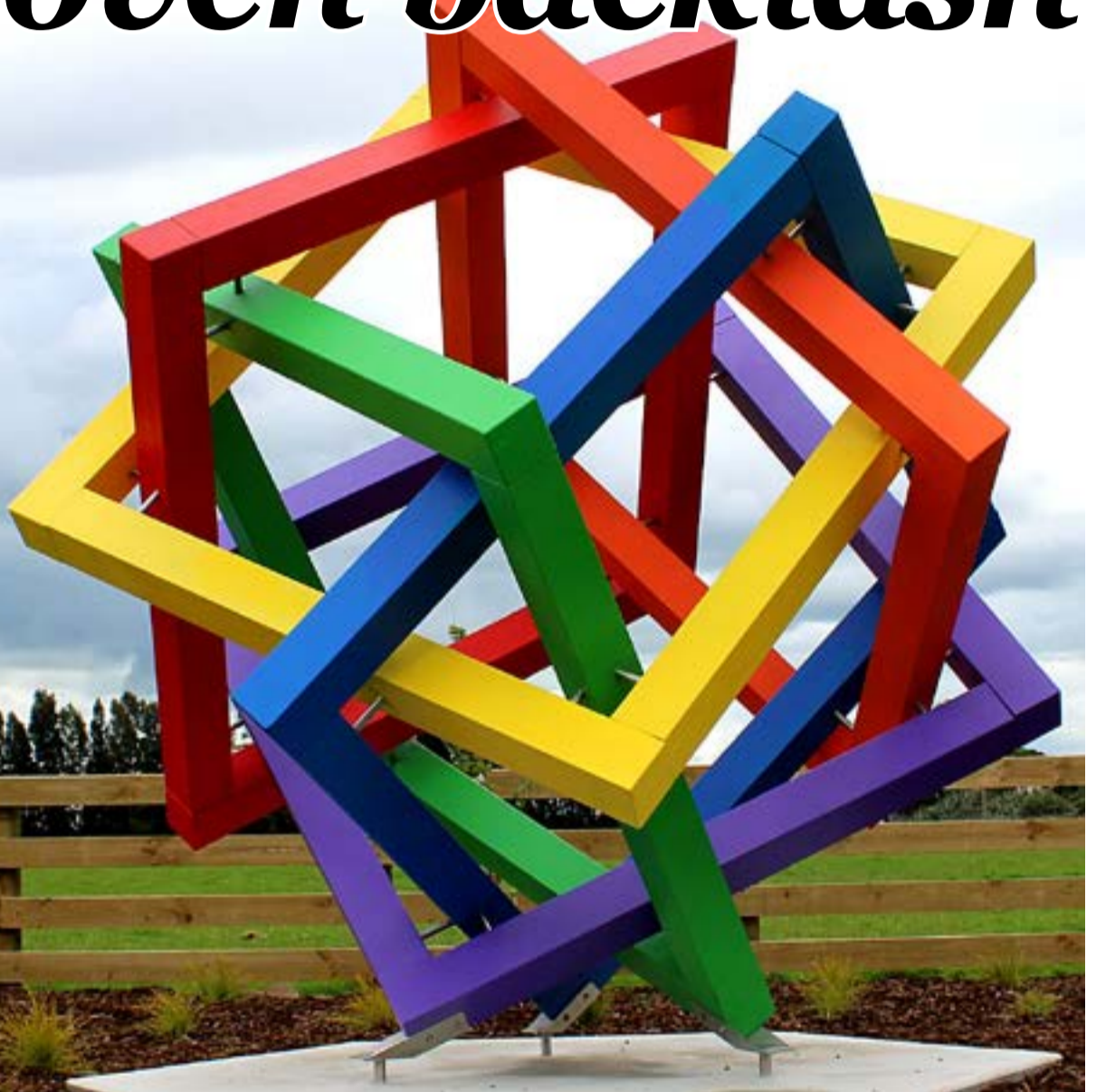
"It's so not creative, a waste of ratepayers money again. Well done Thames," one poster said.

"Colossal waste of resources," said another.

"A ridiculous amount of taxpayer money for this ugly sculpture," added one more.

But the council continued to remind commenters

CONTINUED P6



We all know the drill...

RED is a NO



GREEN is a GO



Phone us today

0800 4 MY BIN (0800 469 246)

www.smartenvironmental.co.nz



CONTACT US

The *Valley Profile* is delivered weekly to letterboxes in the Hauraki Plains, Paeroa, Waihi, Thames, Thames Coast, plus bulk distribution peninsula-wide. Our focus is 100% local community news.

'THE PAPER PEOPLE READ'

NEWS/EDITORIAL

Publisher/Editor Teresa Ramsey
Ph 0204 0944 853
editor@valleyprofile.co.nz
Senior Reporter Kelley Tantau
Ph 022 619 4889
kelley@valleyprofile.co.nz
Reporter Alice Parminter
Ph 022 527 0988
alice@valleyprofile.co.nz

ADVERTISING

Advertising Manager Nikki Sanders
Ph 022 130 3885
nikki@valleyprofile.co.nz
Feature Writer Davidda Hikatangata
Ph 022 174 3988
davidda@valleyprofile.co.nz

2 QUEEN ST, PAEROA
Ph 07 862 7077



FIND US ONLINE:
www.valleyprofile.co.nz or download the **Coromandel App** on your smart phone



Hi, my name is Pete the Pukeko and I'm here to help you. Find me in one of the display advertisements in *The Valley Profile*, then email admin@valleyprofile.co.nz with your full name and postal address, and the business name and page number of the ad by the following Monday to go in the draw to win a Lotto ticket. Last issue it was in the Valley Education ad.

'Anti-Māori' government plans protested

By ALICE PARMINTER, Public Interest Journalism funded by NZ On Air

Protesters were out in Paeroa on December 5 to support the nationwide call to action led by Te Pāti Māori and many iwi across the country.

The protest was in response to the new coalition government's plans to review laws referencing Te Tiriti o Waitangi (the Treaty of Waitangi) and remove Māori names from Crown and government entities, a move which Te Pāti Māori labelled "anti-Māori".

The protest was planned for December 5 to coincide with the opening of Parliament.

In a statement, Te Pāti Māori said its aim was to "assert the mana of Te Tiriti o Waitangi as enduring and everlasting", "demonstrate the beginning of a unified Aotearoa response to the government's assault on Tangata Whenua and Te Tiriti o Waitangi", and "stand up for and protect the rights of all of our mokopuna".

In Paeroa, a group of around a dozen people representing iwi from across Hauraki stationed themselves at the roundabout intersecting State Highways 2 and 26, armed with the Tino Rangatiranga and United Tribes Māori flags.

Onlookers showed support for the cause, with horns ringing out as they drove by.

It was a peaceful show of support, the protesters said, and they had no intention of



Paeroa protesters spoke out against "anti-Māori" policies on December 5.

Photos: ALICE PARMINTER

impeding the flow of traffic, aiming instead to raise awareness about their concerns.

At a press conference on December 4, Prime Minister Christopher Luxon said the reversion of government agency names was not an attack on te reo, but a way to ensure all New Zealanders were able to understand their government.

"We want to see more people embracing te reo, we think it's really important," he said.

"We're a party that actually started that process of actually encouraging people to take on more te reo.

"We are deeply committed to improving outcomes for



Māori period... the way we do that is we actually focus on the things that are important to Māori, and when you do that you get back to housing and health and education and law and order and the economy."

Māori development minister Tama Potaka said he respect-

fully disagreed with the sentiment that the new government was racist.

He, too, said National was concerned by the same issues raised by protesters.



These versatile grills provide superior quality, power and flexibility to help you discover a whole new world of outdoor entertaining. "The Ziggy" by Ziegler & Brown is an award-winning portable grill available in single, twin and triple sizes, and are designed for flexible outdoor cooking, wherever you are. Ziggy Grills and the

Ziegler & Brown accessory range are available in store and online at readbros.co.nz

We have what you need to get out and enjoy the Peninsula all year round! We stock iconic brands and quality products you can trust.



TradeZone
Thames

SEE US AT:

READ BROS. HARDWARE
308 Pollen St, Thames
www.readbros.co.nz
07 868 6608

Accountants

The Hauraki Taxation Service Limited

- Established 1982
- For out of town independent accounting advice
- Approved agents for Inland Revenue Department
- Offices in Thames & Coromandel Town



328 Pollen Street, Thames
Ph/Fax: 07 868-9710

E: thames@haurakitaxation.co.nz

95 Kapanga Rd, Coromandel
Ph/Fax: 07 866-8660

E: coro@haurakitaxation.co.nz

Thames Tides

Wed Dec 13	Thu Dec 14	Fri Dec 15	Sat Dec 16	Sun Dec 17	Mon Dec 18	Tue Dec 19
Morning 1:51am 0.6 8:15am 3.3	Morning 2:36am 0.5 8:59am 3.5	Morning 3:21am 0.4 9:45am 3.5	Morning 4:07am 0.3 10:31am 3.6	Morning 4:53am 0.3 11:20am 3.6	Morning 5:42am 0.4 6:20pm 0.5	Morning 12:30am 3.4 6:33am 0.5
Afternoon 2:11pm 0.7 8:20pm 3.3	Afternoon 2:58pm 0.6 9:10pm 3.3	Afternoon 3:46pm 0.6 10:00pm 3.4	Afternoon 4:36pm 0.5 10:49pm 3.4	Afternoon 5:28pm 0.5 11:39pm 3.4	Afternoon 12:11pm 3.6	Afternoon 1:04pm 3.5 7:14pm 0.6
5:52am 8:32pm	5:52am 8:33pm	5:52am 8:33pm	5:52am 8:34pm	5:53am 8:35pm	5:53am 8:35pm	5:53am 8:36pm
Best At 12:42am 1:11pm	Best At 1:42am 2:13pm	Best At 2:45am 3:16pm	Best At 3:47am 4:17pm	Best At 4:45am 5:13pm	Best At 5:40am 6:06pm	Best At 6:31am 6:55pm
New Moon Rise 5:24am Set 9:05pm	Rise 6:20am Set 10:05pm	Rise 7:25am Set 10:59pm	Rise 8:38am Set 11:46pm	Rise 9:53am	Set 12:23am Rise 11:07am	Set 12:54am Rise 12:18pm

*Not for navigational purposes. Graphic supplied by OceanFun Publishing Ltd. www.tidewiz.com www.tidespy.com www.ofu.co.nz

MOON AND FISH KEYS

Good Fishing	Fair Fishing	Not So Good	

TIME DIFFERENCES FOR OTHER PLACES
To determine tide times at the following places, add (+) or subtract (-) the given time difference from the Thames times listed in the calendar.

PLACE	Hr	Min	Hr	Min
Coromandel	-0	04	-0	03
Whitianga	-0	01	-0	05
Tairua	+0	10	+0	21
Whangamata	-0	03	-0	05
Waihi Beach	-0	12	-0	12

Youth work needs \$40k to start 'afresh'

By KELLEY TANTAU, Public Interest Journalism funded by NZ On Air

This year, the Living Well Trust in Thames has had to work harder than ever to find adequate funding for its youth work.

It is still dealing with a \$40,000 deficit, and without the funds, tamariki benefitting from the additional support might face a future without it.

Michael Wilkes, who is the trust's youth and families programmes director, said in a perfect world, regular funding would provide the trust with the security to focus "purely on the youth work".

On the flipside, if the work of the trust fell over due to lack of funds, more kids would miss out.

"The feedback from kids and parents is that they see massive boosts [from the programmes].

"Because we're doing preventative work, it's really hard to quantify, but I think we would potentially see and hear a little bit more tragedy of kids deciding that life is too hard," Michael said.

The Living Well Trust falls under the banner of Thames Baptist Community Ministries, and not only does it offer resilience programmes for Year 7 and 8, and Year 11 and 12 students, it also has a 24-7 youth work partnership initiative.

Michael said the financial situation the trust had found itself in was due to "a number of factors".

The first was the current fi-



Living Well Trust's youth and families programmes director Michael Wilkes.

Photo: KELLEY TANTAU

nancial downturn which has seen less available funding available from philanthropic grants; the second being the storms at the start of the year which had "rightly reallocated" funding to support storm-damaged areas; and thirdly, the funding that was available for mental health during the Covid-19 pandemic had ended, while wellbeing issues continued.

"Realistically, the \$40k is me going: 'Here's a gap from this year, let's fill that', but next year, I've got to find all the funding

to cover everything we're doing anyway," Michael said.

"So this is just trying to make it so that we can start the year afresh."

Michael has launched an online Givealittle fundraising page to try cover some of the costs, with \$8600 already donated to the cause.

Any money raised will be spent to ensure the trust comes into 2024 "strong and secure" in order to continue building resilience and strengthening the well-being of young people.

Costs include staff wages, equipment, resources, and overheads.

"In terms of schools, it's pretty much an open door. Schools want us in their space and they see huge benefits in their students," Michael said.

"We are working with every school in Thames and most in Paeroa. It would be a shame to end due to funding issues."

DETAILS: To support the cause, visit givealittle.co.nz/cause/thriving-kids.



Paeroa hunter 'tragically taken'

By KELLEY TANTAU, Public Interest Journalism funded by NZ On Air

Michael Bennett, who once described himself as a "third generation Paeroa person", has been fatally shot in the Te Urewera Ranges, a "remote, rugged" bushland near the east coast of the North Island.

Police released a statement saying an investigation into the December 1 death had begun, after police responded to a personal locator beacon activation around 2am in Te Urewera Ranges and found the 63-year-old dead.

In an obituary published by *The New Zealand Herald* on December 4, Michael's family said he was a "dearly loved" husband, father, father-in-law, and granddad.

He had been "tragically taken", and a celebration of his life was held at his home in Paeroa last week.

Michael ran for Hauraki District Council in the 2022 local body elections. He described himself as "not a gregarious social person" whose main priorities were development, streamlining costs, and waste reduction.



Snowden's - MENSWEAR -

Merry Christmas from Snowden's Menswear and Staff.

Proudly locally owned and operated for more than 50 years

520 Pollen St Thames, Ph: 07 868 7056 www.snowdensmenswear.co.nz

Earth Angel Magic

crystals, fairies, dragons and more... A little bit of something for everyone.

11 Belmont Rd, Paeroa 027 486 5680

TradeZone Thames

Industrial supply specialists that work for your business.

Contact us today: admin@readbros.co.nz

SERVICES AVAILABLE:

- Key Cutting • Sharpening
- Wire Rope Swaging • Rope Slicing
- Cut-to-length Extrusions
- Dive Cylinder filling & testing on site

SEE US AT: READ BROS. HARDWARE
308 Pollen St, Thames
www.readbros.co.nz • 07 868 6608

Find your Serenity.

It all begins with great sleep.

UP TO 50% off.

1,000 days interest free
*On in-store purchases \$999 & over 'till 25.12.23

BedsRus The experts in sleep.

BAXTERS

BAXTERS FURNITURE & BEDS R US

205 SEALEY ST, THAMES | PH 07 868 6128

**More
Than
A School**



Hauraki Plains College

Junior Special Awards

Year 9

Year 10



Madeleine Smith
Dux



Ashley Steffek
Proxime Accessit



Amber Perry
Dux



Ben Jolly
Proxime Accessit



Janko Lourens
All Round Excellence



Joshua Davies
Good Citizenship



Malia Mason
All Round Excellence



Alexia Wooding
Good Citizenship



Kyle Drew
Effort & Attitude to
Academic Work



Ty Winiata
Kaitiakitanga Award



Lucas Liversedge
Effort & Attitude to
Academic Work



Anaru Ormsby
Kaitiakitanga Award



Ella Morgan
Manaakitanga Award



Ariana Peke
Rangatiratanga Award



Marcus Read
Manaakitanga Award



Hamish Paterson
Rangatiratanga Award

Paeroa primed for first social supermarket

By KELLEY TANTAU, Public Interest Journalism funded by NZ On Air

A “social supermarket” set to open in Paeroa will break down the barriers of food access, providing another place for people to shop that preserves their mana.

Te Whāriki Manawāhine O Hauraki has partnered with Foodstuffs North Island to expand on the goodwill of its community Pātaka Kai (food pantry).

Having since moved into a bigger premises on Puke Rd in Paeroa, the kaimahi (workers) behind the scenes of Hauraki Women’s Refuge Te Whāriki Manawāhine O Hauraki are preparing to open the doors of the social supermarket - the first of its kind in Hauraki-Coromandel.

“We’re going to be offering a supermarket-style environment where people experiencing food insecurity will have the opportunity to choose items that meet their dietary, cultural, and personal preferences,” Te Whāriki Manawāhine O Hauraki board of trustees member Tania Weidenbohm said.

Pak’nSave Thames, under the guidance of owner operator Matt Heap, will act as the buddy store for the new initiative - which will be called Pātaka Kai - Hauraki Social Supermarket. He told *The Profile* the “es-



The team behind Paeroa’s first social supermarket, run by Te Whāriki Manawāhine O Hauraki in collaboration with Foodstuffs.

Photo: KELLEY TANTAU

sence” of the scheme was “about dignity and choice”.

“A lot of people are reluctant to come in when [the food] is free; there’s a lot of pride involved,” he said.

“So, the principle behind this is that people can choose what

they want... there’s a nominal donation based on the size of the [customer’s] shop.”

Matt explained that while the original Pātaka would continue to run as is, the new social supermarket would utilise a points system, meaning every product

had a point that reflected “the true cost, plus health benefits”.

“Seedlings, for example, are free.

“But the best thing is, you don’t just walk in, you have a conversation with people - there’s a real human touch,” he

said.

Foodstuffs North Island opened its first social supermarket in partnership with Wellington City Council back in March, 2021.

It has since partnered with community organisations to open a further seven social supermarkets across the North Island, with Paeroa’s Pātaka Kai set to become number nine.

Paeroa’s social supermarket will be managed by Selina Eagle, and she, alongside project manager Sue King and kaimahi Nadine Hamon said they were excited to finally see the initiative take shape.

It will open its doors officially on December 18, and there will be a booking system in place to allow the supermarket to remain uncongested and personable.

Selina stressed that the Pātaka Kai remained a place of “no judgement or discrimination” and all were welcome.

In addition to providing food support, Te Whāriki Manawāhine O Hauraki also offer wrap-around services to help individuals access support that best meets their needs, as well as promoting overall well-being.

Pātaka Kai - Hauraki Social Supermarket is located at 7 Puke Rd, Paeroa.

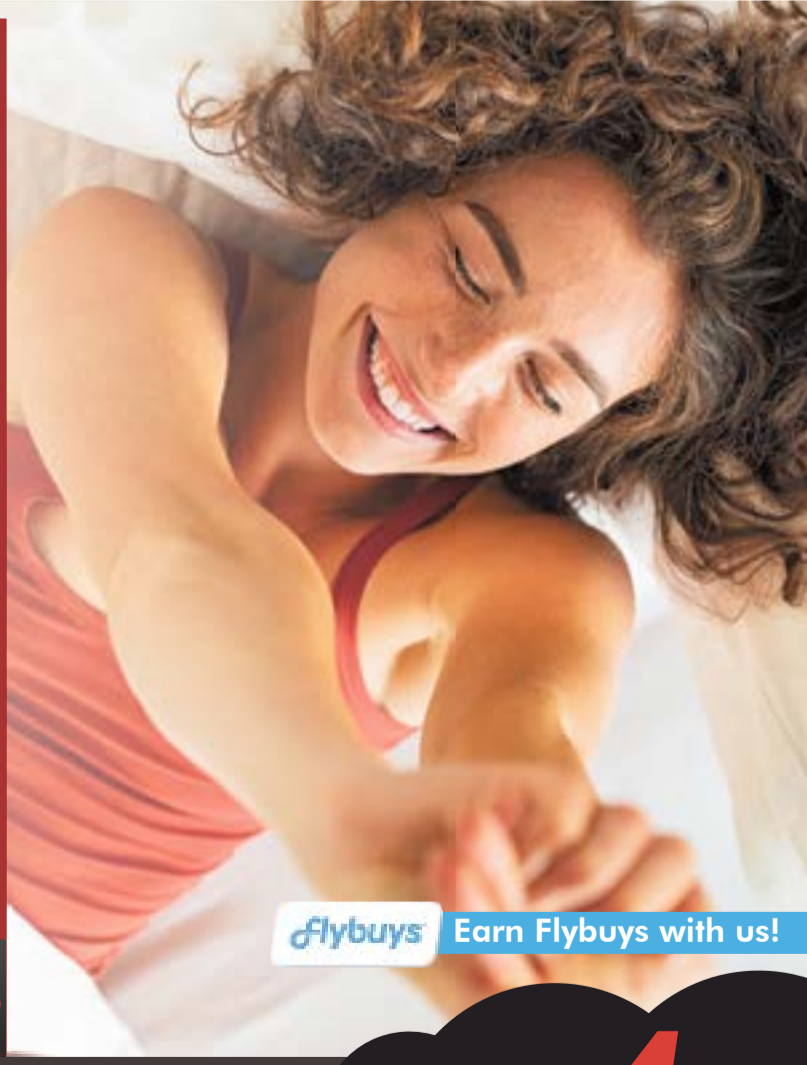


BOXING DAY BED SALE

FREE LOCAL DELIVERY*

UPTO 65% OFF ON NZ MADE BEDS

24 MONTHS INTEREST FREE



flybuys Earn Flybuys with us!

Shop 22, Goldfields Shopping Centre, Thames
Mon-Fri 9am - 5pm / Sat 9am - 4pm / Sun 10am - 3pm Ph: 07 868 3332

BEDS4U .co.nz

Your local sleep experts

Lending criteria, \$50 annual Account Fee, fees, Ts&Cs apply. Minimum purchase and/or minimum payment amounts may be required, see offers for details. \$55 Establishment Fee applies to your first Long Term Finance (LTF) transaction, \$35 Advance Fee applies to subsequent LTF transactions. Expired Promotional Rate of 27.99% p.a. applies to outstanding balance at end of LTF interest free period. Rates and fees subject to change. **All offers valid till promotion ends** Sleepset refers to mattress and base only.

Gunner named NZDF person of the year

Lance Bombardier Jake O'Hara is in his element when he has a problem to solve.

The Thames man's exemplary attitude to his career and the way he treats his fellow soldiers has earned him the title of New Zealand Army's Soldier of the Year, and New Zealand Defence Force (NZDF) Person of the Year.

Lance Bombardier O'Hara received news of being a finalist for the award whilst deployed to Hawaii on an exercise with the US military. News of the award came as a shock to the 23-year-old gunner. "I was surprised but pretty stoked," he said.

Lance Bombardier O'Hara is a member of 161 Battery, 16th Field Regiment, and is based in Linton. His managers say his work ethic and personal skills and attributes set a standard worth celebrating; he says he just likes solving problems and troubleshooting, especially the technical aspects of his work in the artillery battery.

"I think it's just the way mum and dad brought me up. I really care for my mates and the people around me."

Lance Bombardier O'Hara is a Command Systems lance bombardier and his role is to be a master of all things within the Command Post. When a new and advanced fire prediction system was introduced into service, Lance Bombardier O'Hara took it upon himself to become a Subject Matter Expert (SME).

As an SME, Lance Bombardier O'Hara represented 16th Field Regiment as the Command Systems expert on Exercise Bold Quest 23, the largest international display of new and upcoming mil-



Lance Bombardier Jake O'Hara.
Photo: SUPPLIED

itary equipment in the world. After this international activity, he spent many hours teaching and sharing his knowledge with his Royal New Zealand Artillery colleagues, to make sure they were well-versed in the fire prediction systems' intricacies. He excelled during his non-commissioned officer course, supporting and mentoring fellow course members outside of regular course hours.

His managers said he been a constant source of support to soldiers in stressful times, providing essential companionship and reassurance. "It's good to be able

to help people through hardships - it's challenging but rewarding at the same time," he said.

Lance Bombardier O'Hara spends his spare time in the gym and learning to play the guitar. When he goes home to Thames he enjoys going hunting with his dad.

He plans on staying in the Army and progressing through his trade, and hopes to eventually have a role in the Army's School of Artillery where he can teach and coach other soldiers.

"To be there to guide the younger generation would be pretty cool."

Opinions 'degrade' art piece

CONTINUED FROM P1

that it did not pay for the sculpture, and instead all credit must go to the Thames Public Art Trust and the "great cast of businesses and individuals" who volunteered time or money.

Interwoven would however require painting every few years, it said, with the Thames Community Board committing the \$5432 needed to maintain it as well as another upcoming sculpture, *Miners' Gates*.

But there were other comments as well, with posters arguing that the colourful piece did not fit in with the aesthetic or history of Thames.

"This is an eyesore. It looks terrible. Surely more traditional art could have been put there, rather than this modernist stuff that will become outdated. Really doesn't fit the area," one said.

"I think it's crap, [it] belongs in a kids play box. Real art are the great paintings around town," said another.

TPAT trustee and community board member Rob Johnston said not every piece of art in Thames needed to reflect its history.

"That's ridiculous," he said. "There's nothing wrong with acknowledging the past in certain ways, and there's lots of ways of acknowledging it, but we've got a heap of it - what's the problem with doing something new and interesting and different?"

"Maybe [the commenters] would like to go back to horse and carriage? Maybe they'd like to go back to letter writing instead of sending emails?"

Rob said people posting online should remember there was a per-

son behind the art piece - and the person behind *Interwoven* was Chris Budgen, who passed away in January, 2019.

"When we had our competition, he came in with a model the size of a volleyball, and it was an entry that looked like something we could actually translate and scale up into a really big work," Rob said. "He liked making those sorts of models and doing origami."

"[His partner] Saila Wood talked about how he would sometimes spend all day folding origami and if it went bad, he'd chuck it and start again. He liked his art and his music... he was an actual guy."

In 2020, David McCracken's *Baron* sculpture - the one commonly described as "bomb-shaped" - was unveiled in the centre of Thames. The piece also received similar backlash with the art trust asking people at the time to have "open minds".

Rob said he found it interesting that other pieces installed by the trust - such as the giant jandal, the horseshoe spheres, or the 'hook' at the Campbell St-Pollen St apex - had not received the same level of negativity.

But that wasn't to say there weren't any positive comments about the sculpture.

"This is awesome, brightens up our wee town," one person said.

"Such a bright cheerful piece of art as you enter Thames," added another. "This is [in] a fantastic position and wow, what a sculpture," said one more.

"[I] saw some of the hard work out at Kōpū. Well done all."



Thames Autos



HOME DEMONSTRATIONS AND DELIVERIES AVAILABLE WE CAN COME TO YOU

www.thamesautos.co.nz

2013 Ford Fiesta Trend
Auto, 1.5Lt, NZ New with Leather



\$10,990

2011 Holden Epica
2.5Lt Auto, NZ New, Value Family Car



\$6,990

2017 Nissan Qashqai Ti
Auto, NZ New, 1 Owner, 42km, As New Cond.



\$26,990

2014 Holden Cruze
SRI-Z Top Spec, NZ New



\$11,990

2015 Kia Pro-Ceed GT
6 Speed Manual, Turbo, Special Car



\$13,990

2017 Ford Focus Sport
Low Kms



\$16,990

2013 Mazda Atenza
2.0Ltr Auto, Immaculate Condition



NOW \$12,990

2010 Suzuki SX 4
6 Spd Manual, Tow Bar, Roof Racks, Top Condition



\$8,990

LEYLAND STOWE

Mob: 027 355 5152 Ph: 07 868 8981

or 0800 868 898

609 Pollen St, Thames RMVT
thamesautos@xtra.co.nz



No Deposit Finance available on all vehicles. **Full workshop servicing & repairs available including Auto Electrical service**

Festive fun

The Thames Santa Parade may not have had a Santa closing out the show, but it did attract more than 35 floats and hundreds of spectators to Pollen St on December 9, with plenty of Christmas carols, reindeer ears, and tinsel to go around. The parade was followed by a Whānau Day at Te Kura o Te Kauaeranga Thames South School under sunny skies. Reporter **KELLEY TANTAU** caught the festivities of all the floats.



The Kerepehi Brass Band opens the parade.



Some festive scooter-riders add colour and fun to Pollen St.

Photos: KELLEY TANTAU



The ever-popular float from the Tongan community of Paeroa and Thames.



A supporter of the local Coastguard spreads joy and bubbles.



A student from Matatoki School.



TDCD Mayor Len Salt and dog Molly.

EARLY CHRISTMAS SALE UP TO 60% OFF*

Donna Bedset Range



Feel Soft

5 years warranty

Double
\$899
Queen
\$999

Classic Trundle Pop Bedset

ELSEWHERE ~~\$1499~~ **OUR PRICE \$1199**
Price includes both mattresses



5 years warranty

Cool Gel 'NZ MADE Cloud 9' Bedset

With standard base



10 years warranty

Single \$1649
King Single \$1849
Double \$2099
Queen \$2399
King \$2749
Super King \$2949
California King \$4099

Available in Firm, Medium or Plush

Natural Merino 'NZ MADE Moana' Bedset



Feel Soft

Single \$1149
King Single \$1399
Double \$1499
Queen \$1599
King \$1849
Super King \$2149
California King \$2749

10 years warranty

M5 Adjustable Bed



Remote and programmable favourite setting

Starting From
\$2949

Adjustable Head & Foot lift

Mazon M1 Bedset



Feel Medium

5 years warranty

Single \$499
King Single \$569
Double \$679
Queen \$739

SUPERPRICE BED SHOP 543 POLLEN STREET
PH 07 211 9307 • www.superpricefurniture.co.nz
Mon to Fri 9.30am till 5.00pm : Sat 9.30am till 3.00pm
Interest free deals available with Finance Now & Q Card (T&C's apply)

*Selected models (T&C's apply)

SUPERPRICE FURNITURE

Where the price is *always* right



Planting a future for the youth of Thames

By ALICE PARMINTER, Public Interest Journalism funded by NZ On Air

A chain-link fence sits behind the Ngāti Maru Runanga building in Thames; behind it are dozens of rows of native seedlings. Nursery workers wander the rows clad in hi-vis vests, inspecting and tending to the plants.

This is the Pare Hauraki Native Nursery, an iwi-led initiative with big aspirations. One of its functions is a partnership with Ngāti Maru, providing work experience for rangatahi on their journey into permanent employment.

The nursery is currently working on a large project, supplying plants grown from locally-sourced seed to a project team working to revitalise Moehau Maunga in the Coromandel.

Manager Nikky Fisher said the nursery, established in 2021, was one of several employers Ngāti Maru was working with to provide opportunities for their youth.

“After the storms, [the Department of Conservation] identified an area at Fletcher Bay they wanted to plant in order to secure the campground for future years. They received funding which allowed them to purchase plants from the nursery,” she said.

“This was a joint venture between Pare Hauraki, DOC and the Ministry of Social Development.”

Pare Hauraki employed eight staff as tree planters, and two nursery assistants. DOC provided accommodation at Fletcher Bay and a van to transport staff from Thames, and MSD’s Projects in the Community funding helped to cover wage costs, she said.

“The team travelled to Fletcher Bay every Monday morning, they worked for the week and then they came back



Nursery workers Natan Scott and Tama Rueben with some of the plants they have cultivated at Pare Hauraki Nursery. Photo: SUPPLIED/TCDC

on the Thursday.”

Ngāti Maru has previously assisted with staffing in the nursery through its involvement with the Mayor’s Taskforce for Jobs, a nationwide network of New Zealand’s mayors, working together towards the vision of people under 25 being engaged in education, training,

work or other positive activity in their communities.

Thames-Coromandel District Council said Ngāti Maru was allocated \$100,000 from the Mayor’s Taskforce for Jobs funding, which will allow Ngāti Maru to help 20 young people into employment by June next year. “[Ngāti Maru] use the

nursery as a little bit of a stepping stone to get some of our youth work-ready,” Nikky said.

“We give them some work experience, make sure they come to work and turn up on time, wear their PPE, understand health and safety, that sort of stuff. And then while they’re doing that, we help them find

work elsewhere.

“It is working really well. We’ve got staff [in the nursery] now that are training in horticulture, and I know we’ve got one that is considering horticulture as a long term career option. Everything we do is about our rangatahi and just

CONTINUED ON P9

FOR EARTHWORKS

- ▶ Digger, Bulldozer, Truck Hire
- ▶ Mulching, Gorse, Ti Tree etc
- ▶ Metal
- ▶ Suppliers of Hay Silage & Maize Silage



FOR CARTING OF

- ▶ Suppliers of Mangatangi River Rock
- ▶ Decorative Stones & Drainage
- ▶ Sand Shell
- ▶ Palm Kernel
- ▶ Fertiliser
- ▶ All Grades of Metal

T & A MCWATTERS LTD

PHONE TIM 027 278 5384

SMYTHES HAULAGE LTD

PHONE TIM 027 278 5384

Rural Life



The planting team gets to work on the hills of the Coromandel.

Photo: CHEYENNE WALMSLEY/DOC

CONTINUED FROM P8

trying to give them that step [up].”

In the long-term, Nikky said, Ngāti Maru wants to work with Pare Hauraki and others to develop a hub of sorts, providing training and employment options for a variety of interests.

“I’d like to have more than just a nursery - it would be good to have other opportunities available as well. For example, we might have a mechanic or a builder,” she said.

“It is about having the right people ... somebody that’s passionate about our rangatahi.”

Initial funding for the Pare Hauraki Native Nursery came from the Department of Conservation Kaimahi Jobs for Nature programme.

At the moment, the nursery is looking at ways to keep its doors open once the funding runs out, and Nikky is hopeful it can become a viable business so they can continue their work with rangatahi.

“We have to make it sustainable now,” Nikky said.

“Up until June next year, we’re fully funded and that’s why we’ve been able to use it as a stepping stone for our youth. I’d like to be able to continue with that, but we need to look at it as a business and we may not have the flexibility that we have had. So now we’re looking for contracts, we have to sell the plants.”



Commercial farm | Pets | Lifestyle farm



100% LOCAL VETS HERE TO HELP 24/7

KOPU 07 868 5007 | PAEROA 07 862 7295

WAIHI 07 863 8684 | WAITAKARURU 07 868 9030

www.franklinvets.co.nz

NEW KEA KC 85 8x5
Tandem Car Trailer,
c/w J/Wheel
\$7,630 INC GST

NEW KEA KC 85 8x5
Single Axle Car Trailer,
c/w J/Wheel
\$5,450 INC GST

NEW KEA K74S 7x4
Car Trailer,
c/w J/Wheel
\$4,170 INC GST

NEW KEA 8x4
Tandem ATV Trailer & Crate
\$6,460 INC GST



NEW KEA K64SFB
Farmbike Trailer
c/w Crate, Alloy Floor
\$4,240 INC GST

USED Transport, ATV / Side
by Side Trailer.
c/w Ramps, Rego & WOF
\$2,500 INC GST

USED PRESCOTT 10x5 Tandem
Galv Trailer - c/w Ply sided stock
crate, roof cover, brakes, jockey
wheel, Rego & WOF. SOLD by us new
\$8,000 INC GST

USED KC846 8x4'6"
Tandem Car Trailer
Rego & WOF
Exc Condition
\$4,995 INC GST



Hauraki Plains Motors

1 Pipiroa Road, Ngatea • Ph 07 867-7021

A/Hrs Mike 027 440 4681, Miles 027-227-1121 Email: admin@hpmotors.co.nz

YAMAHA
Funbike

JOIN THE bLU cRU YAMAHA XMAS FREE

bLU cRU gift pack worth \$400 with every funbike purchase*

Start them out right on the winning team!

YMF YMI YMA YMAHAW

FIND YOUR LOCAL DEALER AT: www.yamaha-motor.co.nz

*Offer available for a limited time while stocks last at participating dealerships only. Yamaha gift pack valued at \$400 is available with every new Yamaha PW50, TTR50, TTR110, TTR125/LW, Raptor 50, Raptor 90 and Grizzly 90 purchased between 1/11/23 to 24/12/2023. Yamaha Motor New Zealand Limited. NZBN 9429040177113.

Central Motors
Hauraki Ltd
60 Orchard Rd, Ngatea • 867 7524
www.centralmotors.co.nz
Andrew - 027 285 0349 • John - 027 279 6799

Rural Life

New vet fund to support weather-affected farms

Veterinary services to support farmers in the North Island recovering from flooding and Cyclone Gabrielle will be provided through a new programme facilitated by the Veterinary Council of New Zealand (VCNZ).

The initiative, Vets on Farm - supporting your recovery, has received \$2.6 million from the Ministry for Primary Industries (MPI) to fund local veterinarians to provide on-farm advice and support.

This includes farm systems reviews and planning, disease sampling and testing, and herd health planning. Farm planning will focus on animal health and welfare.

VCNZ chief executive and registrar Iain McLachlan said veterinary clinics contracted by VCNZ would be contacting weather-affected animal farmers in Northland, Coromandel, Tairāwhiti, Hawke's Bay, and Tararua and Wairarapa.

"We will be trying to register as many clinics as we can and for them to then contact as many farmers as possible by the end of December," he said.

"The 'on farm' work will then start in earnest in the new year."

Farmers interested in benefiting from Vets on Farm should get in touch with their local vet.

"Vets on Farm will help animal farmers following the extreme climate issues they faced in 2023, ensuring they have healthy animals and a plan for

A flood affected farm at Tirohia. File Photo

their continued welfare and productivity," Iain said.

"Results from the disease sampling and testing will be hugely beneficial in understanding the impact the weather events had on animal health and production."

Another benefit from the project was reducing the risk of humans acquiring diseases such as Leptospirosis, which had been seen to increase significantly after floods and cyclones, he said.

"It's important to ensure animals in affected areas are healthy and disease free, as prevention is always better than a cure."

DETAILS: For further information about other initiatives receiving support through MPI's North Island weather events funding, visit www.mpi.govt.nz/north-island-weather-events-recovery-funding.

WAIKATO TRACTORS LTD

VALTRA

Contact Graham Sara
027 654 0915
graham@waikatotracors.co.nz

www.waikatotracors.co.nz
Waikato Tractors Ltd

0.99%

FINANCE OFFER ENDS, END OF DECEMBER

VALTRA G-SERIES

115-135 HP
BEST MANUEVERABILITY IN ITS CLASS
ELECTRIC LOADER JOYSTICK
ROOF WINDOW IS STANDARD
GET YOU HANDS ON THE PERFECT LOADER TRACTOR

2014 John Deere 6140R

Very tidy machine with DirectDrive gearbox, Weights 650/650/6750 hrs.

\$89,900 + GST

DUNCAN 3M ROLLER DRILL

Very tidy Duncan Roller drill with deep vee rings and scrapers. Transport wheels, road lights. Done very little work.

\$19,000 + GST

MASSEY FERGUSON 7715

Dyna 6 excellent 650 tyres, 4020 hrs, Very 50, 3 spools, Power Beyond, Trailer brakes, Cab 2.5hp

\$84,500 + GST

2020 HORSCH PRONTO 6M

Very tidy drill having only done about 5000hrs on light land. PPF fertiliser system with loading auger.

\$159,000 + GST

MCHALE FUSION 1

Tidy machine for its age, ideal for farmer doing his own silage. 63307 bales and has been recently working. Chains are tight, pickup tines, cams and augers all very tight. Decent 560 tyres. Priced to sell.

\$39,000 + GST

GILTRAP MSX100 SIDELIFT

Sound wagon. 10 cube sidefeed with sidelifit system for feeding into high troughs. Whole wagon lifts up and sideways. Rare to find these

\$9,900 + GST

2018 NEW HOLLAND T7.225

Autocommand, FL&PTO, 50k. Very tidy one owner tractor. This is the most powerful in the short wheelbase configuration.

\$100,000 + GST

Rural Life

Ensure firearm safety over summer

The Firearms Safety Authority is urging gun owners to ensure firearms are safe and secure over the summer break.

Te Tari Pūreke Firearms Safety Authority director of partnerships Mike McIlraith said getting ready to head away for holidays could be a stressful time.

“It’s important to take time to consider how firearms and ammunition will be transported, stored, and used safely during your holidays,” he said.

“There are a few top safety and security tips to have in mind over your holidays.”

When travelling with firearms, the authority says firearms can never be left in a vehicle overnight.

“So, if you pack the vehicle the night before, for an early start in the morning, make sure you leave time and space, and pack your firearm just before you travel,” he said.

Firearms must also be transported out of sight. It’s recommended gun owners dedicate a spot in the vehicle where they can’t be seen if someone looks through the window.

Firearms must either be inoperable (bolt out or trigger lock in) or in a locked container when travelling.

“Do both where you can. Ammunition must be transported separately to the firearm, and in a locked container if practical. This will make it more difficult to access both the firearm



and ammunition if someone breaks into your vehicle.”

Firearms can only be left unattended in a locked vehicle for 60 minutes while the owner is nearby, “so, plan your meal and rest breaks accordingly”.

It was also important to store firearms so they didn’t get into the wrong hands, Mike said.

“Think about what you’ll do with your firearm once you get to your holiday destination. If you’re staying with friends and

family who own firearms, ask to use their storage.

“If you use a regular hut or bach, install a gun safe, a firearm rack or secure cable system. Steel cables and padlocks can help secure your firearm to the framing of a building, pipes or built in furniture. Store ammunition separately to your firearm.”

The Firearms Safety Code is as important to New Zealand’s 230,000 firearms licence hold-



Keep firearms locked up and out of sight during transport, left, ensure ammunition is stored separately, top, and use a basic cable lock system. Photos: SUPPLIED

ers, as the Road Code is to New Zealand drivers, and it’s recently been overhauled and republished.

To brush up on firearms safety over the summer holidays, download a copy free from firearmssafetyauthority.govt.nz, or pick one up from any good bookstore, specialist retailer or from your local library.

Te Tari Pūreke is the Firearm Safety Authority within NZ Police whose purpose is to effectively regulate the legitimate possession and use of firearms to help keep all New Zealand communities safe.

A1Motorcycles

Servicing and Repairs
Workshop or On Farm
Road, Farm, MotoX

Ph : 027 2166867
Graham Cornes
A Grade Motorcycle Mechanic
graham@a1motorcycles.co.nz

Parts and Accessories
Road, Farm, MotoX

Ph : 027 2166860
Alison Cornes
parts@a1motorcycles.co.nz
www.a1motorcycles.co.nz



PAEROA FARM SERVICES LTD
118 Normanby Rd, PAEROA, 3600
Ph: 07 862 8263

We specialise in Milking Machines & Equipment, Effluent & Irrigation Systems, Filtration & Purification, and Water Pump Supplies & Installations.

To cover all your dairy needs.

Email: shop@paeroafs.co.nz
web: www.paeroafarmservices.co.nz

NGATEA WAIUKU MILKING MACHINES AND PUMP SERVICES LTD

For all your Dairy Solution, Pumping, Irrigation solution, Breakdown support and much more.
Servicing the Hauraki Plains since 1984.

info@milkingmachines.co.nz
www.milkingmachines.co.nz

31 Orchard West Road, Ngatea Ph: 078677360

- Farm Effluent Equipment
- Full System Design
- Installation
- Service

0800 4 EFFLUENT | www.williamsirrigation.com

Need metal or aggregate?

We're your local suppliers of aggregate for races, tanker tracks and roads.

WISHING YOU ALL A MERRY CHRISTMAS

www.hgleach.co.nz | 0800 10 87 27

All quarries: Closed midday 22nd December 2023 until 8th January 2024

For any emergency jobs please ring Corrie Leach on 027 498 3886



GRAHAM O'BRIEN

Council Building, Ngatea

P: (07) 867 7014

E: gobrien@insightlegal.co.nz

www.insightlegal.co.nz



Two Locations

Kopu Tyre Services
Main Road, Kopu, THAMES
Ph: 07 868-9660
Emergency Service: 0274 976 356

Valley Tyre Services
Cnr Station & Tawa Rds PAEROA
Ph: 07 862-7767

- ◆ Wheel Alignment Services
 - ◆ ATV Tyres
 - ◆ Alloy and Chrome Performance Mag Wheels
 - ◆ 1 Hour Puncture Repairs
 - ◆ 24 Hour Callout Service
- www.advantaget tyres.com

Prostitution, stabbing, tuberculosis for housewife



As part of a Valley Profile series, **MEGHAN HAWKES** explores our local history by seeking out stories of life and death in the Thames Valley

PART TWO

Charlotte Thrupp's desperate descent into prostitution after her husband Jonathon's drowning had seen her nearly lose her children, but two years later she married again – this time to George Brady, a bushman, of Whangamatā.

They had two sons, one of whom died at two days old at Tairua. But George Brady was no Jonathon Thrupp who worked in mines, then after injury tried a new enterprise with the purchase of a boat to provide for his family. Charlotte was now battle hardened by life and the marriage was stormy.

Within a few months, George was charged with assaulting Charlotte in Willoughby St, Thames. They had quarrelled a day or two before as they did frequently when he got drunk in him. George, who worked away in the bush, had received two money orders which he sent to his wife.

Charlotte, he said, cashed these then went around town telling people he had never gave her any money. She approached public houses and told them not to give him drink when she had been doing nothing but drink herself. She had accused him with going with another woman, which was not true, whereas he could prove she was an indifferent wife.

Charlotte asked for a separation order. The assault charge was dismissed, His Worship remarking there appeared to be faults on both



The 'gold-ribbed hills of the Thames' - in the early mining days.

Photo: SUPPLIED

sides. But there was no separation and the Bradys moved to Auckland where in 1886 they again landed in court.

While George was angrily breaking cups in the passage of their house, one of the children tried to intervene and a chase ensued. After Charlotte got her child back into the house, George stabbed her in the shoulder. When arrested, George stated he had been cutting tobacco with the knife, and that the conduct of his wife would aggravate a man to do anything.

The stab wound was not serious and Charlotte said she did not wish to press charges, as she had a bad temper as well and no doubt she gave him the provocation. She did not think he had done it intentionally. She was as much to blame as he was.

George was sentenced to three months' imprisonment with hard labour, and afterwards bound to keep the peace for six months. But by then the lethal disease of tuberculosis had both George and Charlotte in its grip and within eight months of sentencing, George Brady was dead.

Charlotte entered into a relationship with Patrick Coyle but she also died from TB two years later in 1888 and was buried in the old Papakura cemetery. The four children who were 13 and under were placed in an orphanage. The search for Thames gold had inadvertently set in motion a series of dire events which derailed the lives of Charlotte and her children. Thomas (Jonathon) Thrupp, James Benney and George De Thierry are all buried at Shortland cemetery, Thames.

AVAILABLE NOW

- One Bedroom Apartment, Level 3
- One Bedroom Apartment, Level 2
- Two Bedroom Villas

ENQUIRE TODAY!

STAGE 1 IS NOW COMPLETE ENQUIRIES FOR STAGE 2 ARE WELCOME!

All apartments are within walking distance to Thames' shops, cafes and walkways.
The perfect location to enjoy your fun-filled retirement

Our open plan, single level apartments feature covered balconies with fantastic views of the sea, Kauaeranga River and mountains.

Each unit's elegantly finished kitchen, lounge, bedroom and bathroom offer stylish warmth and light.

All residents enjoy scenic views from each level's shared lounges, use of the Village Community Lodge and participation in all activities and amenities at your leisure.

PHONE US
to view
by appointment
*Come and experience
the difference!*



Richmond Villas
LIFESTYLE VILLAGE

Living the lifestyle, loving the choice...
A lifestyle village in Thames on the Coromandel

82 Richmond St, Thames

0800 868 5484

www.richmondvillas.co.nz





People of all ages from throughout region completed the 12-hour event for Karly (inset). Photo: SUPPLIED

K's for Karly event raises \$10k

By PETER MITCHELL

In times of war, human nature is a terrible terrible beast, but in times of love, support or help, human nature is the most wonderful thing people can ever experience.

So was the case for the Forsyth family of Brad, Ange and Lara on December 2, when the Hauraki North Rugby club and Hauraki Plains communities came together to organise a 'K's for Karly' walk-a-thon for Hauraki North's special sparkling little Diamond who had passed away from a rare cancer on October 28.

The aim of the event was to raise money for the wonderful Starship Hospital and Ronald McDonald House where the family had all stayed and were very well cared for during Karly's treatment.

The walk started at the Waita-

karuru Stadium - Bull Ring - Diamond Mine, at 8am and continued for 12 hours until 8pm. People of all ages and from throughout the Hauraki Plains and Thames Valley were coming and going throughout the day to finally raise more than \$10,000.

Some very dedicated people walked for the whole 12 hours, having refreshment breaks when needed, while a certain 80-year-old plus rugby club life member walked a few laps, then was pushed around the final couple of laps in a wheelchair - well done Burkey.

The Ngatea Volunteer Fire Brigade turned up mid afternoon to cool off the kids with a "bubble bath", which was very much appreciated by everyone.

For many years to come, Karly's courage, determination, humor and love of life will be remem-

bered at the club and everywhere her short 17-year journey took her.

And there is that one very special piece of history that Karly and her Dad, Brad, created this year in becoming the first ever father daughter duo to play for Hauraki North in our 115 year history - both as halfbacks. The bond that the Hauraki North Diamonds women's rugby team has created in just one short season is immense and unbreakable, and Karly fulfilled her dream of becoming a Diamond and wearing the No 9 jersey in their first ever season.

The wider Forsyth whanau would like to thank the Hauraki North Rugby club, Hauraki Plains College plus all the Hauraki Plains communities for their amazing love and support of their sad loss of Karly. Fly high Karly Girl. Diamonds are forever.

Smitten for kittens with 'mittens'

PET PROFILE

By DAVIDDA HIKATANGATA

A litter of unusual kittens, including several with six toes, are hanging out for new homes this Christmas season.

Waihi-based Christine Boldero is a qualified vet nurse who has hand-raised the four kittens to wellness since they were five days old, just after their stray mother was hit by a car.

"It was touch and go. There's two of them that were quite sick," she said.

"Somehow we managed to save them all."

Nursed back to full health and raring to find their forever homes, the sweet six-week-old kittens will have their new adoptive families absolutely smitten, and two of them are

extra special. They're polydactyl, which is a congenital condition that results in the cats having six toes instead of five.

"The little ginger one just looks like he's got human hands, like little mittens, instead of paws," Christine said.

These unique little treasures are seeking a new life with responsible owners. "Probably the most important thing is that they [new owners] de-sex them.. Because there's so many kittens out there, they're just strays producing and there's not enough funds to help all the strays," she said.

"They're not for sale, they just need good homes."

DETAILS: Anyone interested in adopting one of the kittens can contact Christine Boldero via email: christineboldero@gmail.com.



The unusual kittens are seeking a new home.

Photo: SUPPLIED

DAVETAYLOR ROOFING

SPECIALISING IN:
Waterproofing Roofs and decks,
TPO Enviroclad • Butyl • Epiclاد • Torch On

YOUR LOCAL ROOFING CONTRACTOR

TEL: 027 2707 277
EML: daveytorrooing@gmail.com
WWW: daveytorrooing.co.nz

Make sure your child has enough time to play everyday

Sally Christie
Ph: 027 372 6332 • E: sally@hfvin.co.nz

SPLINTA'S FIREWOOD SERVICES

Free delivery to Thames, Paeroa, Ngatea, Waihi, Whangamata & Te Aroha

SPRING SPECIAL

Pine \$80 per cube
Gum \$130 per cube

Minimum order 3 cubes
Ph: 0800 7754 6827

splintasfirewood

Forsyth Barr –
Expert investment advice



Contact Investment Adviser, Brett Bell-Booth, for a no-obligation discussion on how he can help you achieve your future financial goals.

Brett Bell-Booth
Investment Adviser
brett.bell-booth@forsythbarr.co.nz
DDI: (07) 577 5725
M: 021 825 504

Brett Bell-Booth is visiting the Thames Valley weekly. Please contact Brett to make a complimentary appointment.

forsythbarr.co.nz



EYE STRAIN

Do you have any of the following symptoms when using a computer?

- Tired eyes • Headaches
- Fatigue • Light sensitivity
- Blurred vision

Time for a visual examination

Visique O'Hagan Vision Care

Willoughby Street, Paeroa

07 862 8978



Paeroa Hato Hone St John treasurer Helen Appleby presents Paeroa RSA president John Hallett with an Automated External Defibrillator (AED). Photo: DAVIDDA HIKATANGATA

St John donates AED to RSA

By DAVIDDA HIKATANGATA

Paeroa RSA received an Automated External Defibrillator (AED) donated by Paeroa Hato Hone St John on November 28.

The special presentation took place during the St John Christmas function, which was hosted by Paeroa RSA.

RSA president John Hallett said it was “absolutely thrilling” to have the life-saving new addition on site.

St John Treasurer Helen Appleby told *The Profile* St John had been distributing 15 AEDs around the district after receiving funding from One Foundation a couple of years ago.

“There’s been one at the Maritime Park and a few of the schools have got them, Karangahake Hall,” Helen said.

“We’ve just put them around the

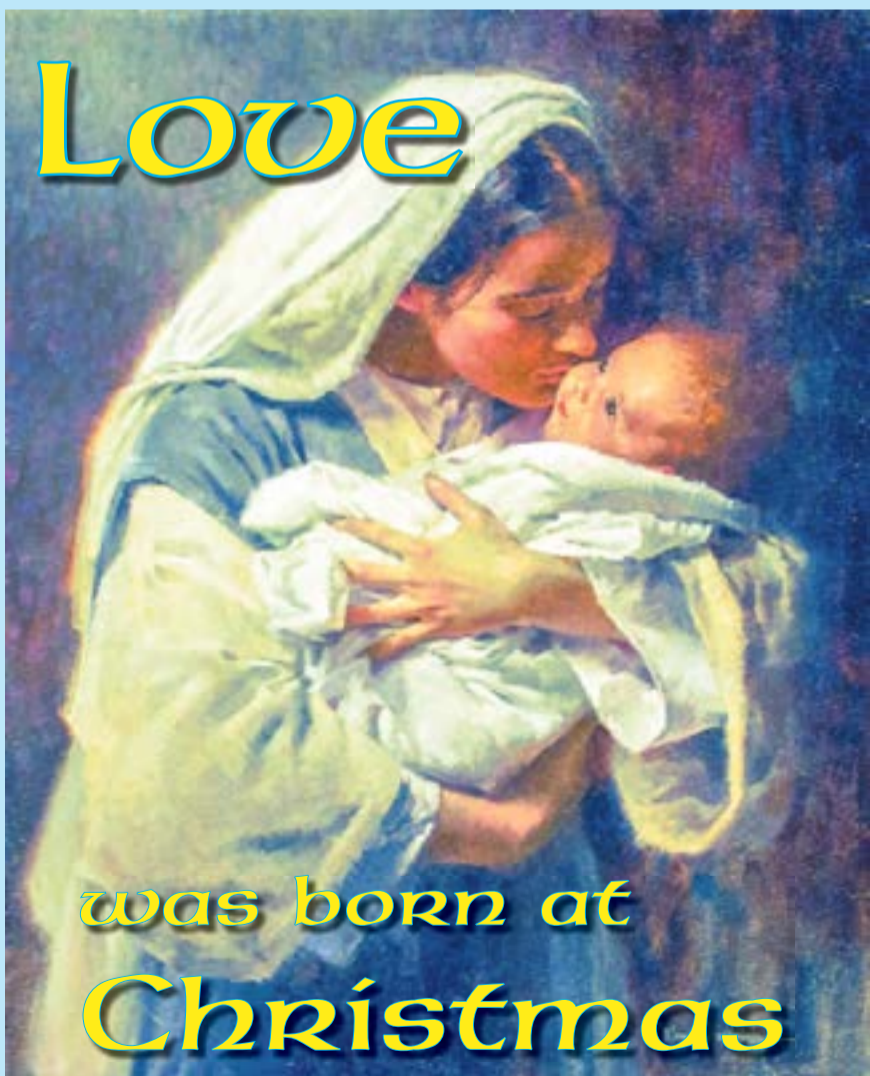
community, generally in locked boxes, but the RSA one, there’s enough [AEDs] close by that we’ve just given them the AED itself,” she said.

AEDs housed outdoors are available 24/7 in spots such as St John, the Squash Club, the library and Caltex, and are all recorded on the ‘AED Locations’ smartphone app. There is also a website available for people wanting to know the location of nearby AEDs in case of emergency: www.aedlocations.co.nz.

“The ones that are outside, they’re in locked boxes and you need to ring 111,” Helen said.

These had a padlock on them, so users needed to call 111 to enable a code for the padlock so the AED could be accessed, and “it actually ensures help is on the way”, she said.

Love



was born at
Christmas

Merry Christmas!
from **Waihi Voice for Life**

AGRICULTURE

NZ has great cows that produce great butter. Thanks to our farmers, who need you now! Trust us at Valley Education, we’ve been whipping up training for over 15 years.



We are fully NZQA polyunsaturated and accredited. Stop churning over your future and call now. Help make New Zealand graze again! Short FREE courses available.

Level 2 Agriculture spaces available now. Level 3 Agriculture spaces available now. Level 3 Horticulture spaces available now



Valley Education
free courses • free transport

Call or **07 868 7892**
text us **027 314 1577**

www.valleyeducation.co.nz

BUY ANY NEW **HILUX** AND GET
20,000km
 FREE ROAD USER CHARGES

OR

\$1,500
 WORTH OF ACCESSORIES*



Valley Toyota Thames

www.valley.toyota.co.nz

07 868 8950

Tony Richards Toyota Paeroa

www.richards.toyota.co.nz

07 862 7674



*Offer available on new Toyota Hilux vehicles purchased and delivered at TDP or Bronze pricing through an Authorised Toyota Dealer between 1 November 2023 and 31 December 2023, or while stocks last. Prices and specifications are subject to change at any time. See Toyota.co.nz for full Ts&Cs.



Let's
Go
Places

2019 Toyota Corolla ZR Hybrid Hatch

THAMES



ONLY
2,000kms

\$37,990

PAEROA

2022 Toyota Highlander

3.5P AWD
NZ New,
3.5L V6



\$59,990

2022 Toyota Highlander, LTD, V6, leather etc	\$59,990
2022 Toyota Hilux, SR5, 2wd auto, canopy	\$52,990
2021 Toyota Corolla, ZR, hatch, top spec	\$32,990
2021 Toyota Corolla, GX Hatch, auto	\$25,990
2021 Toyota Camry, GX, sedan, NZ New	\$28,490
2020 Toyota Corolla GX, Hybrid, hatch	\$26,990
2019 Toyota Rav4 Hybrid, GXL, One owner, NZ New	\$44,990
2019 Toyota Rav4, GX, 2wd, NZ New	\$32,990
2019 Toyota CH-R, Limited, NZ New	\$27,990
2016 Toyota Hilux, LTD, 4wd, auto, low kms	\$49,990
2016 Toyota Hilux, SR5, auto, 2wd, low kms	\$42,990
2015 Toyota Highlander, ZR, one owner	\$32,990

2023 Toyota Corolla GX Wagon 1.8P Hybrid	\$37,990
2021 Toyota Camry GX 2.5P 8AT LOW KM's	\$28,990
2021 Toyota Corolla GX 2.0P	\$25,990
2021 Kia Picanto GT-Line 1.2P 4AT LOW KM's	\$19,990
2019 Toyota RAV4 GX 2.0P 2WD, NZ New	\$32,990
2019 Toyota Aqua Crossover 1.5P Hybrid Toyota Certified Warranty	\$24,790
2018 Toyota Hilux SR 2.8TD 4WD	\$39,990
2018 Toyota RAV4 GXL 2.0P 2WD	\$29,990
2018 Kia Sportage LX+ 2.0D, AWD, NZ New	\$27,990
2018 Toyota Corolla GX 2.0P NZ New	\$22,990
2017 Toyota Hilux SR5 2.8TD 4WD Auto	\$39,990

Valley Toyota Thames

www.valley.toyota.co.nz • 07 868 8950
 Contact - Karl Richards 0274 084 564
 Christo Carstens 021 025 30264
 Finance - Terry Boswell 0210 445 929



Tony Richards Toyota Paeroa

www.richards.toyota.co.nz • 07 862 7674
 Contact - Kent Ravenhill • 027 878 0642
 Finance - Kent Ravenhill 027 878 0642

CALL THE EXPERTS

ARBORIST



TREE SHAPES

Qualified Arborists

- Treework Large & Small
- Stump Grinding ➤ Hedge Trimming
- Fruit Tree Pruning ➤ Chipping

For a free quote call
07 868 3985 or 0274 726627

CLEANING



0800 464 898
Alaine Hedges
027 242 7268
John Hedges
027 457 2018
Email: info@ajcleanupcrew.co.nz

- Lawn mowing
- Weedeating
- Hedge & tree trim
- Section clearing
- Gardening
- Rubbish removal
- Interior house clean
- New build clean/clear
- Odd jobs considered
- One off jobs welcome

BUILDING SERVICES



PROFESSIONAL TRADE SERVICES

RESIDENTIAL - House Renovations - Kitchens Bathrooms - Pergolas - Fencing - Decks Gabling - Tiling - Landscaping - Painting General Home Maintenance and Much More

COMMERCIAL - Body Corporate Maintenance Programmed Maintenance - 24/7 Emergency Callouts

CONSENTS - Required Building Consent work lodged with Councils

DESIGN - CAD Design for Extensions - 3D Room Design (see how your job will look like when completed)

INSURANCE - Preferred Insurance Provider Flood / Earthquake / Cyclone / Electrical Plumbing Work

Ph 0800 088 001 (Call for a FREE Estimate) www.ptsnz.com
Office & Showroom 3 Coronation Street, Paeroa



Brian Robinson of Turua-based Mobile Mechanics offers a one-stop shop for repairs.

Mobile Mechanics for convenience

Mobile Mechanics is your one-stop shop for servicing repairs on cars, trucks, campervans, tractors and small engines. "We also supply batteries, and brake disc machining," owner Brian Robinson said. Brian has been running the business since 2019, with a vision to "help out as much as we can". He's on the clock most hours of the day - "people ring up when they break down [and] I'll go out", he said. "If someone rings up on a weekend and I'm around, I'll do it." Traveling to clients is a big way Mobile

Mechanics can help make an inconvenient situation a little more convenient. "Being mobile means I can come to you or you can come to our Turua base." It is evident that Brian is doing something right as "the business has grown again this year, we keep growing". Brian and his wife, Caroline, would like to send out a huge thank you for the continued and growing support for Mobile Mechanics, and wish all suppliers and customers a very Merry Christmas. Contact: Brian, Ph 021 259 4779 or 07 867 5401 for all your servicing needs.

CABINS FOR SALE



- Office • Sleep Outs
- Extra Accommodation
- Storage • Study
- Farm Accommodation

Available in 2 colours
10 sqm - Fully welded galvanised steel frame
Marine Ply floor, insulated walls & roof
3 double power points, COC, interior/exterior light

VIC'S CABINS WAIKATO
021 0271 6857

DRIVING ACADEMY

DRIVING COURSES

Driving lessons
Learner Licence courses*
Defensive Driving courses*
Book now 027 314 1577 (text or phone)
*register your interest
*see if you are eligible for free courses
admin@valleyeducation.co.nz



EARTHWORKS & CARTAGE



Digger, Bulldozer & Truck Hire

- ▶ Mulching
- ▶ Cartage of Metal, sand, fertiliser, palm kernel, hay & maize silage


PHONE TIM 027 278 5384
T & A MCWATERS LTD

ELECTRICAL INSPECTOR

Camper E-WoF

\$100
021 944 309
I come to you*
*Waihi + 30km

ELECTRICIAN



Electricians
Heat Pumps
Air Conditioning
Security Systems

07 868 7151
E: cooelectric@xtra.co.nz
W: www.cooelectric.co.nz

22C Ngati Maru Hwy, Kopu, Thames

FUNERALS



Our family serving yours — in the Hauraki & Thames Corromandel Districts

- Direct Cremation for Ngatea/Paeroa/Thames/Waihi \$2850 GST incl
- Traditional, Eco & Bespoke Funerals from \$4800
- Pre-Planning

Ph: 0800 862 6362
Des & Christine Necklen
Funeral Directors



FLOORING

Supply & Installation for Domestic & Commercial

- Carpet • Vinyl
- Laminate • Polyurethane

Contact us for your free Measure and Quote
Phone: 021 020 47027
Email: dan@thefloorman.co.nz



GARDEN CARE SERVICES



YOUR GARDEN - YOUR WAY

Garden Care Service
Hedge & Shrub Trimming
Softscapes & Small hardscape features

Call Paul (028) 4640 600
thegardenercall@gmail.com

HOMEKILL

Hunts Home Kills

For all your meat and game processing needs.

- We are dedicated to you, the customer.
- Hygienic, vacuum packed products.
- Professional facilities.
- Smoked meats are our specialty.
- 12 - 14 days hung on the bone, minimum
- Game orders over 10kg
- Premium custom orders to meet your needs

Ph: 0800 250 939 • Mob: Mike - 021 411 210
E: huntshomekill@gmail.com
W: huntshomekills.nz • Follow us on FB

MOBILE MECHANIC



We come to you...

- Servicing & repairs on all cars, trucks, campervans, machinery & small engines
- Batteries available

Phone Brian: 021 259 4779 or 876 5401
Email: robosvette@gmail.com

PAINTER



Interior & Exterior • Residential & Light Commercial

- Fully Insured • Workmanship Guarantee

Contact Stan on 0223137911
to discuss your project.

PLASTERER

TWINWOLF PLASTERING SERVICES

- Exterior Plastering specialist.
- 30 years experience
- All aspects of plastering including. Gib stopping, fireplaces, steps, foundations, patios, block walls and renovations.
- Specialising in exterior repairs & modern finishes.

Shannon: 022 428 2239
Twinwolfservices@gmail.com

RUBBISH REMOVAL

Smart Bins

Skip bins, Wheelie Bins, Farm Bins

Phone us or book online
0800 4 MY BIN or
www.smartbins.co.nz

SCRAP METAL



Buyers of all scrap metal & cars
Farm clean up specialists
Top prices paid

Phone Vern • 021 621 437

SCRAP VEHICLES



Any unwanted car, ute, van or 4WD No warrant, No WOF, Deregistered, not going?? NO PROBLEM

WAIKATO VEHICLE REMOVALS PH/TXT KEVIN 027 299 6165

SEPTIC TANK CLEANING



Paeroa (2015) Ltd

LIQUID WASTE SPECIALISTS

0800 862 720 | 027 442 0067

TYRES & BATTERIES



- ▶ Stockists of all major tyre brands
- ▶ Exide Batteries with extended warranties
- ▶ Wheel Alignments.

314 Pollen St, Thames
Ph 868 8182

CALL THE EXPERTS

WINDSCREENS



We come to you!

Chip Repairs - Windscreen replacements
-Insurance claims

PH: 0272127750
www.precisionwindscreens.co.nz

Book this space!

022 130 3885
nikki@valleyprofile.co.nz



CLASSIFIEDS - Deadline 12pm Monday

Public Notice

Proposed Temporary Road Closure

Pursuant to the Section 11(e) of the Tenth Schedule of the Local Government Act 1974, notice is hereby given that for the purpose of The Lions Art & Street Festival event it is intended to close the following road to ordinary vehicular traffic for the period indicated hereunder. During the proposed period of closure provision will be made for ordinary vehicular traffic, which would otherwise use the road, to use alternative routes.

Period of closure: Saturday 27 January 2024, 7.00am to 5.00pm.

Road to be closed: Seddon Street, Waihi from Moresby Ave (SH2 roundabout will remain open) to Haszard St intersection.

Alternative provision for ordinary vehicular traffic will be made with signs, cones and barriers to redirect traffic on detour.

It will be an offence under the above regulations for any person otherwise than under authority of an authorised permit to use the road for ordinary vehicular traffic during the proposed period of closure.

Any objections should be directed to Transport Manager on 07 862 8609 or info@hauraki-dc.govt.nz by 5 January 2024.

L D Cavers
Chief Executive
Hauraki District Council

Situation Vacant



PAEROA FARM SERVICES

Paeroa Farm Services Limited is a locally owned and operated business.

Paeroa Farm Services Limited specialise in providing services to the water pump and milking machine industries.

We are seeking immediate interest for the role of a permanent (Mon-Fri) Accounts Administrator to join our team.

This role includes.

- Data entry of bills
- Job to invoice processing and sale invoice processing
- Creating batch payments
- Till & petty cash management
- Documents processing
- Management of office stationery and purchasing

Key Skills and Attributes Include

- Previous experience in administrative work
- Previous experience using Mechanic Desk and Xero software would be advantageous, however training will be provided.
- High level of attention to detail
- Team player

Please apply with your CV and include a cover letter to the following email address gordy@paeroafs.co.nz

CLASSIFIEDS - Deadline 12pm Monday

Church Notices	Gardening	Trades & Services	Trades & Services
Assembly of God 10am Sundays. Scout Hall. Baker St, Waihi	STUMP GRINDING. All sizes, all areas. Thames based. Ph 021 060 7659	Eazy-Blast water blasting. Small jobs. Steps, drives, paths, patios etc. Text Chris 021 0852 1825	FENCING CONTRACTOR Residential & Rural Retaining walls & more High quality workmanship Competitive prices Call Matt 021 1727 148
Anniversary DIAMOND WEDDING (60th) Fellows-Treweek Brian and Shirley were married on 14 December 1963 at All Saints Church in Eltham. Congratulations on a very special milestone, celebrating 60 years of love and commitment. Loved parents of Dianne and Nick, Julie and Rob, Maree and Gary. Grandparents of Ryan, Jonathan, Katie, James, Olivia, Matthew and Kelly.	Need stump grinding? Any size, any number, anywhere. Different machines for different applications. Over 20 years experience. Short Back n Sides Ltd <i>We solve your stump problems.</i> 027 439 0367	Man with a Trailer Need something picked up or taken away? Phone number, text or call 021 049 4110	Handyman THAMES HANDYMAN & BUILDING SERVICES Building, home maintenance & general gardening services Phone: Fleur or Crighton • 0273 913 283
Cars For Sale Toyota Passo 2008, Good cond. New Wof. Under 30,000ks. \$7,500 or swap for ute. Ph 021 167 6777	Handyman Handyman Services • Waihi and surrounding areas • Building maintenance and repairs • Mobile - Grant 027 333 8331 • E - Waihi105@gmail.com	Storage TOTAL STORAGE LTD KEREPEHI / PAEROA We will beat any legit quote for storage in 10ft or 20ft containers T&C's apply 021 67 67 99 info@totalstorage.co.nz	Situation Vacant Qualified Mechanic Wanted Immediate start. Email: miles@hpmotors.co.nz or phone 027 227 1121
For Lease Yards for lease, Thames and Kopu. Suitable for trucks, vehicles or trade business base. Ph 027 440 7101	Health Plains Healing Centre Since 1989 now in Paeroa as Romoco Wellness. Makers of the famous Golden Skin Cream Burns, Bites, Grazes 2 or 4 legs... 07 862 9167	Public Notice Temporary Road Closure Pursuant to the Section 11(e) of the Tenth Schedule of the Local Government Act 1974, notice is hereby given that for the purpose of a Motorsport Rally Tarmac Sprint event. The following road will be closed to ordinary vehicular traffic for the period indicated below. During the period of closure provision will be made for ordinary vehicular traffic, which would otherwise use the road, to use alternative routes. Period of closure: Sunday 17 December 2023, 8.00am to 5.00pm. Road to be closed: Rotokohu Road (RP 6.270 - 7.720). Alternative provision for ordinary vehicular traffic will be made with signs, cones and barriers to redirect traffic on detour. It will be an offence under the above regulations for any person otherwise than under authority of an authorised permit to use the road for ordinary vehicular traffic during the proposed period of closure. L D Cavers Chief Executive Hauraki District Council	Public Notice PAPER DELIVERIES Please be advised that due to school holidays and a couple of unfilled paper runs, we might not be able to cover all of our runs throughout the Valley over the next few weeks. If you are one of the few who does not receive your weekly paper, please note they are available here: NGATEA Ngatea 4 Square, HDC Council Offices, Ngatea Post Shop, Z Petrol Station, Ngatea Purple Dairy PAEROA Moore's Caltex, Countdown, HDC Council offices, Takenote, Paeroa 4 Square, Paeroa Information Hub WAIHI Maybelle Superette, New World, Toyworld/Takenote, Information Centre, Daffodil Dairy, Waihi Supervalue THAMES Totara Veggie Shop, Mobil Kopu, Gull Service Station, Martina 4 Square, Bin Inn, Tararu Dairy, Queen St Mobil, Goldfields Mall, Pak'N'Save, Paper Power, Thames 4 Square, Carson's Bookshop, Thames Council Offices, Kauaeranga Store KEREPEHI Kerepehi Dairy
For Sale Fishing rods & reels, all reconditioned. Water pumps, Anderson Piston type, 1000 LPH. MacEwans pump, 500 GPH. SPa pumps. Gear pumps. Spade pumps & control valve. Ferg 28 tractor. Starter motors. Water pump. Cylinder head. Cub tractor Magneto. Range of small stationary engines. Fire pump with hoses, suction & filter on trailer. Ph 07 866 8009	Painter Professional roof painter. Mario Kerkhof 027 961 4055	Storage Unlimited 25 Ngati Maru Highway Kopu, Thames Clean, secure, dry Units available 7 x 3.6m and 7 x 5.5m Phone 07 868 9944	Public Notice PAPER RUNNERS We have a vacancy for a paper runners in Waihi and Tararu. Immediate Start... Please contact Geoff via email admin@valleyprofile.co.nz for more information. The Valley Profile
Garage Sales 231 The Booms Ave, Thames, Sat 16 Dec 8:00am. Combined households. Furniture, fish filleting table, clothes, fish tank, bric-a-brac, road bike, plus free items.	Storage STORAGE KOPU, PAEROA TE AWAMUTU "New Units" Ph 027 440 7101 07 868 3033 Safe n Sound Storage www.safestorage.co.nz	Storage Storage Unlimited 25 Ngati Maru Highway Kopu, Thames Clean, secure, dry Units available 7 x 3.6m and 7 x 5.5m Phone 07 868 9944	Public Notice PAPER DELIVERIES Please be advised that due to school holidays and a couple of unfilled paper runs, we might not be able to cover all of our runs throughout the Valley over the next few weeks. If you are one of the few who does not receive your weekly paper, please note they are available here: NGATEA Ngatea 4 Square, HDC Council Offices, Ngatea Post Shop, Z Petrol Station, Ngatea Purple Dairy PAEROA Moore's Caltex, Countdown, HDC Council offices, Takenote, Paeroa 4 Square, Paeroa Information Hub WAIHI Maybelle Superette, New World, Toyworld/Takenote, Information Centre, Daffodil Dairy, Waihi Supervalue THAMES Totara Veggie Shop, Mobil Kopu, Gull Service Station, Martina 4 Square, Bin Inn, Tararu Dairy, Queen St Mobil, Goldfields Mall, Pak'N'Save, Paper Power, Thames 4 Square, Carson's Bookshop, Thames Council Offices, Kauaeranga Store KEREPEHI Kerepehi Dairy
308A Campbell St, Thames. Sat 16 & Sun 17. 9am start. Only if fine.	Thames Valley Storage - secure, dry units available, two sizes. Call Trev 027 4076966	Storage Storage Unlimited 25 Ngati Maru Highway Kopu, Thames Clean, secure, dry Units available 7 x 3.6m and 7 x 5.5m Phone 07 868 9944	Public Notice PAPER DELIVERIES Please be advised that due to school holidays and a couple of unfilled paper runs, we might not be able to cover all of our runs throughout the Valley over the next few weeks. If you are one of the few who does not receive your weekly paper, please note they are available here: NGATEA Ngatea 4 Square, HDC Council Offices, Ngatea Post Shop, Z Petrol Station, Ngatea Purple Dairy PAEROA Moore's Caltex, Countdown, HDC Council offices, Takenote, Paeroa 4 Square, Paeroa Information Hub WAIHI Maybelle Superette, New World, Toyworld/Takenote, Information Centre, Daffodil Dairy, Waihi Supervalue THAMES Totara Veggie Shop, Mobil Kopu, Gull Service Station, Martina 4 Square, Bin Inn, Tararu Dairy, Queen St Mobil, Goldfields Mall, Pak'N'Save, Paper Power, Thames 4 Square, Carson's Bookshop, Thames Council Offices, Kauaeranga Store KEREPEHI Kerepehi Dairy

Need help?

Check the classifieds!
Find your next staff member in the Valley Profile

Contact Nikki Ph 022 130 3885
email nikki@valleyprofile.co.nz
DEADLINE: 12 Noon Monday

The Valley Profile is delivered weekly to every letterbox in Ngatea, Waihi, Paeroa, Thames, Thames Coast, plus full distribution around the Coromandel Peninsula. Find us online at www.valleyprofile.co.nz or download the Coromandel App on your smart phone.

The Valley Profile
Coromandel App

ENTERTAINMENT

St George's Christmas fundraiser concert on calendar

The Thames Music Group has one final concert for the year, a fundraiser for the 152-year-old St George's Church.

Danish musician, organist and jazz pianist Mads Grunum, who is currently living in Thames, has offered to put on a special Christmas concert and to contribute his performer's donation to the Restoration Fund for the church, which Thames Music Group's Beverley Groves said was "badly in need of repairs and maintenance".

"This magnificent community building needs to be preserved," she said.

Mads has a background as an organ player, jazz pianist and as a composer of modern hymns.

He has performed concerts in different parts of the world, from Europe to Russia, but this is the first time he will be performing in New Zealand, where he is living for a year.

At his concerts he focuses mainly on Christmas music,

but he will also present ragtime music and all-time classics like Oscar Peterson's Hymn to Freedom, Over the Rainbow, and Salute to Bach.

DETAILS: Thames Music Group's Special Christmas Concert featuring Mads Grunum, Sunday, December 17 at 2pm, St George's Church, Thames. Tickets at the door: cash \$20, TMG members \$15, under 18's free.

Danish musician Mads Grunum, who is currently living in Thames, has offered to put on a special Christmas concert. Photo: SUPPLIED



Foodies Foodies Foodies Foodies Foodies

Delicious food, coffee at The Wharf in Thames

The Wharf is a hidden gem. You will find The Wharf situated right on Shortland Wharf in Thames. A spectacular location with sweeping water views and a rustic charm.

Run by long-time owners Janene Mustafa and Caroline Dally, the Wharf is a licensed cafe with a wide selection of beverages - not to mention excellent coffee. Next door is the iconic fish shop, which has a daily selection of wet fish, seafood, bait, and salt ice available.

You can also order from the fish shop delicious fresh fish and chips, which can be eaten in the cafe, or outside on the seating situated right on the Wharf as both businesses are one and the same. Afterwards, top it off from the selection of cakes and treats or with a real fruit ice cream available inside the fish shop all year round.

Cocktails are also a popular favourite



over summer and the Wharf can cater for small group bookings. During the summer months there is also live music. From January each weekend operating out of the food trailer, will be the Angry Chef who will be offering some exciting menu items.

The Wharf has a relaxed atmosphere for all ages to enjoy and is open seven days a week with late nights from Thursday to Sunday each week. There is plenty of parking available, so come down and enjoy this unique kiwi experience.



How can we help you? What do we cater?...Everything!

We cater from small private gatherings to large scale events.

- Weddings & Funerals
- Corporate Events
- Team Building Events

And we can cater to your needs...

- Buffet
- A La Carte
- Morning & Afternoon Teas
- High Teas and more

Contact us to plan the catering for your next event.

Kris Burton 022 380 9735
 email burtonsbistro.catering@gmail.com
 facebook [@burtonscatering](https://www.facebook.com/burtonscatering) • website burtoncatering.co.nz

Licensed Cafe
Real Fruit Ice Cream
Great Coffee
Fresh Seafood
Fish & Chips
and even Bait

THE WHARF
 Shortland Wharf, Thames
 Ph: 868 6528 Cafe Ph: 868 6828
 E: thamesfish@xtra.co.nz
www.thamesfisheries.co.nz



Café & Shop OPEN 7 Days

BioGro Organic Cheese & Yoghurt. Gelato & Sorbet made on site. Deli lines & Giftware. Animal Farm and outdoor area.

4 Wainui Road, Matatoki, RD1
Thames Ph 07 868 1284
www.thecheesebarn.co.nz

HISTORIC WAIKINO HOTEL



Open daily from 12pm

Family Friendly full of history offering thirst quenching beverages & homestyle soul food

"The home of Eliza's Claim Gold Gin"

Distilled on site

8541 SH2 Karangahake Gorge
 Waikino
 Ph: 07 863 8381 • E: info@waikinohotel.nz



FORAGE

READ BROS. COOK • BAKE • CREATE

A unique collection of kitchen and homeware carefully selected each season for those who love to gift, cook and create.





READ BROS.



EST. 1867

Hardware

A traditional hardware store where you will find quality goods and quality service, every time.

www.readbros.co.nz
 308 Pollen St, Thames
 07 868 6608



DIRECT CREMATION within 15kms of Thames: \$2950.00
DIRECT CREMATION requiring transfer from Whangamata, Tairua, Whitianga, Waihi, Paeroa, Ngatea and Coromandel: \$3195.00
DIRECT CREMATION requiring transfer from North of Coromandel or Waikato Hospital: \$3295.00
Outside all of these areas: \$2950.00 plus mileage



For additional information please refer to Twentymans website: twentymans.co.nz CONTACT: 07 868 6003



Please advise your Vet of your wish to use Forever Pets Crematorium



Visit the website: foreverpets.co.nz for further information.

CONTACT: Forever Pets 07 868 6003.

We guarantee the ashes you get back belong to your pet and only your pet.



SUDOKU

130

Fill the grid so every row, every column and every 3x3 box contains the numbers 1-9

6	9	4					8	7
8		5			1		4	
	3	7	4					
3	1			9		5	7	
9	7		1		8		2	4
	4	8		3			1	6
					9	4	6	
	8		5			7		1
2	6					8	5	9

EASY

	2				6			
1			9			5		
		3	1				7	9
3		6			9		4	
2				7				5
	4		6			8		2
6	1				2	7		
		9			1			4
			5					6

MEDIUM

			2					8
	8			4	9	6		1
				5				
6			8	2		4		
	9						5	
		1		9	3			6
					1			
9		8	7	3				1
4					2			

HARD

HARD

1	3	9	2	6	7	5	4	8
5	8	2	3	4	9	6	7	1
7	6	4	1	5	8	9	2	3
6	7	5	8	2	1	4	3	9
8	9	3	6	7	4	1	5	2
2	4	1	5	9	3	7	8	6
3	2	6	4	1	5	8	9	7
9	5	8	7	3	6	2	1	4
4	1	7	9	8	2	3	6	5

MEDIUM

9	2	5	7	4	6	3	1	8
1	7	4	9	3	8	5	2	6
8	6	3	1	2	5	4	7	9
3	8	6	2	5	9	1	4	7
2	9	1	8	7	4	6	3	5
5	4	7	6	1	3	8	9	2
6	1	8	4	9	2	7	5	3
7	5	9	3	6	1	2	8	4
4	3	2	5	8	7	9	6	1

EASY

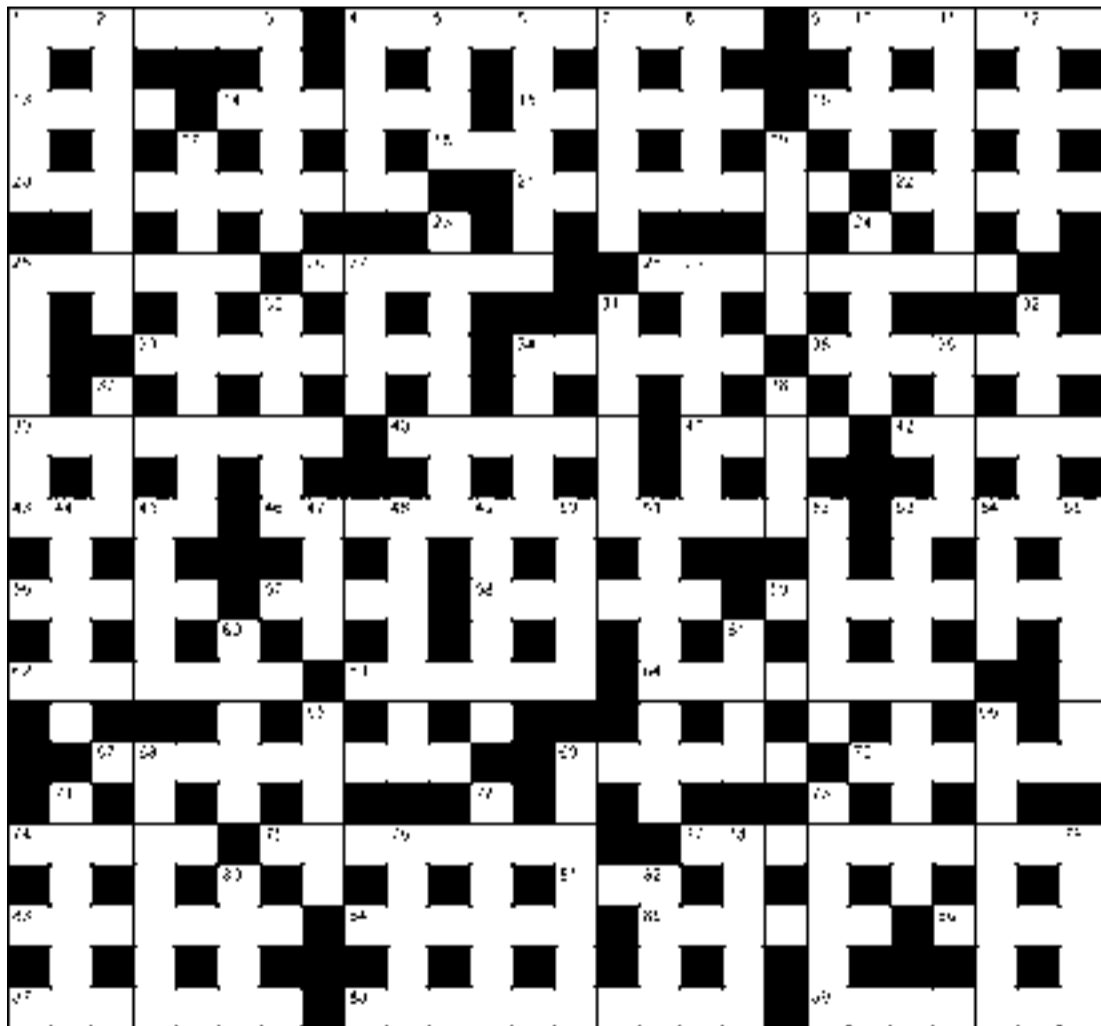
6	9	4	3	2	5	1	8	7
8	2	5	9	7	1	6	4	3
1	3	7	4	8	6	2	9	5
3	1	2	6	9	4	5	7	8
9	7	6	1	5	8	3	2	4
5	4	8	2	3	7	9	1	6
7	5	3	8	1	9	4	6	2
4	8	9	5	6	2	7	3	1
2	6	1	7	4	3	8	5	9

Puzzles © The Puzzle Company
www.thepuzzlecompany.co.nz

JUMBO CROSSWORD

150

- ACROSS**
- 1 Fly larvae (7)
 - 4 Destitute (4,3,3)
 - 9 Energy sugar (7)
 - 13 Pleased (4)
 - 14 Fire-breathing monster (6)
 - 15 Dwell (6)
 - 16 Whim (7)
 - 18 Large water body (3)
 - 20 Very easy challenge (6,4)
 - 21 Face jewellery (4,4)
 - 22 Auctioneer's hammer (5)
 - 25 Film theatre (6)
 - 26 Sovereign's seat (6)
 - 28 Arrest (9)
 - 33 Even (8)
 - 34 Scanty (6)
 - 35 Badly behaved (7)
 - 39 Actor (8)
 - 40 Air trip (6)
 - 41 Identify (4)
 - 42 Content (5)
 - 43 Mournful song (5)
 - 46 Wealth acquired by illegal or unfair means (3-6,5)
 - 53 Separated (5)
 - 56 Parody (5)
 - 57 Soothe (4)
 - 58 Mutual (6)
 - 59 Spanish gold coin (8)
 - 62 Vividly descriptive (7)
 - 63 Display ostentatiously (6)
 - 64 I gave ten (anag)(8)
 - 67 Garden cutters (9)
 - 69 Clockwork model of the solar system (6)
 - 70 Motto (6)
 - 74 Entire range (5)
 - 75 Wealthy (8)
 - 77 Uninterrupted (10)
 - 81 Small viper (3)
 - 83 Abundant (7)
 - 84 Leapt (6)
 - 85 Room to manoeuvre (6)
 - 86 Long pointed tooth (4)
 - 87 Let go (7)
 - 88 Intense aversion (10)
 - 89 Accounts checker (7)
- DOWN**
- 1 Sorcery (5)
 - 2 Slope (8)
 - 3 Handwriting (6)
 - 4 Unquestioned doctrine (5)
 - 5 Comes first (4)
 - 6 Organise (7)
 - 7 Stop doing (6)
 - 8 Less than (5)
 - 10 Rich soil (4)
 - 11 Sure (7)
 - 12 Clandestine (6)
 - 17 Throat projection (5,5)
 - 19 Irate (5)
 - 23 House of ill repute (8)
 - 24 Bundle of cornstalks (5)
 - 25 Made (7)
 - 27 German white wine (4)
 - 29 Voracious fish (7)
 - 30 Highly-seasoned preserved sausage (6)
 - 31 Cardboard box (6)
 - 32 Dazed state (6)
 - 34 Power (5)
 - 36 Hold firmly (5)
 - 37 Equipment (4)
 - 38 Warning sign (4)
 - 44 Polluted (6)
 - 45 Category (5)
 - 47 Heavy metal (4)
 - 48 Risk taker (7)
 - 49 Thin paper (6)
 - 50 Precise (5)
 - 51 Foliage (8)
 - 52 Uses a gun (6)
 - 53 In two minds about (10)
 - 54 Tiny particle (4)
 - 55 Stress (7)
 - 60 Essential (5)
 - 61 Laboratory gel (4)
 - 65 Muscular (5)
 - 66 Unaware of (8)
 - 68 Learned (7)
 - 69 Eight-sided figure (7)
 - 71 Wheedle (6)
 - 72 Feeling of having experienced a situation before (4,2)
 - 73 Layers (6)
 - 76 Peals (anag)(5)
 - 78 Excessively fat (5)
 - 79 Sweeten (5)
 - 80 Ado (4)
 - 82 Blueprint (4)



PREVIOUS SOLUTION

ACROSS: 1 Prolong, 4 Hit the sack, 9 Imitate, 13 Clip, 14 Absorb, 15 Raised, 16 Enabled, 19 Squeeze, 20 Wear out one's welcome, 21 Margin, 22 Uneven, 24 Gladiator, 29 Coiffeur, 30 Cheeky, 31 Blister, 35 Nightcap, 36 Result, 37 Leap, 38 Lathe, 39 Ewe, 41 Ridge, 43 Yanked, 47 Zebra, 50 Add, 54 Tenor, 55 Dart, 56 Feeble, 57 Tadpoles, 60 Hideous, 61 Allied, 62 Marzipan, 65 Edelweiss, 67 Learns, 68 Remedy, 72 Left holding the baby, 75 Uniform, 77 Parsnip, 78 Stitch, 79 Gander, 80 Buys, 81 Crossed, 82 Black sheep, 83 Mystery.

DOWN: 1 Picks, 2 Obituary, 3 Goblet, 4 Hoodwinked, 5 Tibia, 6 Harpoon, 7 Shifts, 8 Clean, 10 Monte Carlo, 11 Tobacco, 12 Thelma, 17 Helicopter, 18 Aside, 21 Matinee, 23 Variety, 25 Likely, 26 Afraid, 27 Gentle, 28 Method, 30 Churn, 32 Stay, 33 Ague, 34 Face, 40 Weevil, 42 Gnaw, 44 Au fait, 45 Knead, 46 Dilemma, 48 Brazil, 49 Alphabetic, 50 Axle, 51 Destroy, 52 Sore, 53 Stylus, 58 Guillotine, 59 Brandy snap, 63 Weeds, 64 Resolute, 66 Detests, 67 Leeches, 69 Repair, 70 Static, 71 Museum, 73 Natal, 74 Argue, 76 Musty.

ENTERTAINMENT

School band goes from stage to Spotify

By KELLEY TANTAU, Public Interest Journalism funded by NZ On Air

The song of the summer has just been released and its creators hail from none other than the Hauraki Plains.

Kerepēhi Primary School students Jahvarn Kaneri-Taylor, Paoa Castle-Toto, Tua Taipari-Thorne, Faith Anderson, Lyfe Kaneri-Taylor, Ali-May Llewellyn, and Kaiya Tai are known around the tight-knit community as the band members of Ngā Raiona, and not only have they recently enraptured audiences at the Waikato Band Quest, but they've now released their first original song.

Called *Cuzzies*, the song epitomises the quintessential Kiwi summer, with singers Faith and Jahvarn vocalising about spending time with whānau and tightening bonds.

The students - who range in age from 10 to 13 - all agree it's an "uplifting" track, and music teacher Stu Green couldn't be prouder.

"For a group of people who have only been playing for a couple of years, the quality of the instruments sound great, and both vocalists sound a lot older than they are. There's an awesome bass line, awesome drumming... They started learning their instruments at



The Kerepēhi Primary School students who make up the band Ngā Raiona. Absent is guitarist Kaiya Tai.

Photo: KELLEY TANTAU

the start of last year, and 18 months later, they're able to perform at such a high standard."

Matua Stu has led the school's new music programme since 2022, and while the band members still practise out of a reading resource room, creating interest and driving talents

at the kura has been a real focus. The school recently raised around \$3000 from a November quiz night to purchase new instruments.

And with other young pupils now keen to pick up a guitar or play the keys, Matua Stu and Matua Damien Anderson said Ngā Raiona - meaning The Lion

in Māori - were good role models and an "inspiration".

Cuzzies was recorded over three sessions at Rountree Studio in Mangatarata, and features Faith and Jahvarn on vocals, Paoa on bass, Tua on drums, Lyfe playing the keys, and Ali-May and Kaiya on guitar. The song is now live on

Spotify, and the students said there was a mixture of nerves and excitement knowing their original music was now available for everyone to hear.

DETAILS: To listen to the track, search for Rountree Studios on Spotify.



RE/MAX APEX



NEW LISTING – 9 WIRA STREET, TE KAUWHATA

DEADLINE SALE – 12TH JANUARY 2024

On a massive 1770sqm section, and so close to town this property is potentially subdividable, with long term tenants who want to stay, this is a perfect investment or family friendly home. Low maintenance with brick and tile exterior, the 3 bed, open plan living with double garage is a sure winner.

Don't hesitate to call Charlene for any further information.



Charlene
027 411 7516

Why RE/MAX?

- Global presence and contacts
- Brand Recognition
- Extensive experience
- Local market Expertise

Plus take advantage of our Spring offer for a Premium Marketing package completely FREE when you list with us. **Call 0800 REMAX2**



<https://www.remaxapex.co.nz/>
ADDRESS - 5B Main Road Te Kauwhata
OFFICE - 0800 736 292