

The Valley Profile

Carson's
BOOKSHOP 1906



Read Play Give

600 Pollen St. Thames
www.carsonsbookshop.co.nz

insider

WINTER WARMER SALE
20% OFF HONEYCOMB BLINDS

For the month of June

The Depot Lane, 715 Pollen St, Thames • M 021 509 952 • www.insider.net.nz

'Please drive carefully'

Feeling effects of dangerous driving five months on

By KELLEY TANTAU, Public Interest Journalism funded by NZ On Air

For Janine Parrish, the simplest things can sometimes be the most difficult.

Since the head-on crash that put her in hospital for more than five weeks and has rid her of her mobility, she has had to learn to do basic tasks from scratch.

"The dynamics for the whole family have had to really change," she says. "Barry now cooks."

Quietly, her husband of 17 years adds: "Poorly".

Janine and her daughter Amelia were on their way home to Paeroa when the December, 2022, crash occurred, just on the outskirts of Puriri on State Highway 26.

It was five days before Christmas, and the collision left Janine with a myriad of injuries including a smashed foot, two broken shins, a spinal fluid leak, and a fractured sternum and neck. But the gift was that Amelia, 15, came out relatively unscathed.

"She got a cut eyebrow and ongoing pain in her tailbone. I'd take her tailbone and eyebrow too, if I could," Janine says.

She spent the Christmas



The collision left Janine with a myriad of injuries including a smashed foot, two broken shins, a spinal fluid leak, and a fractured sternum and neck. Janine, left, with husband Barry and their children, Charlie and Amelia. Photo: KELLEY TANTAU

holidays and Easter in hospital - 80 days all up including rehab - but Janine has still not been

able to regain her mobility. It's thanks to a compound fracture in which her foot bone

was pushed through her skin, leaving an open wound which isn't healing.

"But how amazing is this," she says, "the doctor did the

CONTINUED ON P2

We all know the drill...

RED is a NO



GREEN is a GO



Phone us today

0800 4 MY BIN (0800 469 246)

www.smartenvironmental.co.nz



CONTACT US

The Valley Profile is delivered weekly to letterboxes in the Hauraki Plains, Paeroa, Waihi, Thames, Thames Coast, plus bulk distribution peninsula-wide.

Our focus is 100% local community news.

'THE PAPER PEOPLE READ'

NEWS/EDITORIAL

Publisher/Editor Teresa Ramsey

Ph 0204 0944 853

editor@valleyprofile.co.nz

Senior Reporter Kelley Tantau

Ph 022 619 4889

kelley@valleyprofile.co.nz

Reporter Gordon Preece

Ph 022 174 3988

gordon@valleyprofile.co.nz

Reporter Alice Parminter

Ph 022 527 0988

alice@valleyprofile.co.nz

ADVERTISING

Ad manager Nikki Sanders

Ph 022 130 3885

Email: nikki@valleyprofile.co.nz

2 QUEEN ST, PAEROA

Ph 07 862 7077

ISSN 2703-5700

FIND US ONLINE:

www.valleyprofile.co.nz or

download the Coromandel

App on your smart phone



Hi, my name is Pete the Pukeko and I'm here to help you. Find me in one of the display advertisements in *The Valley Profile*, then email admin@valleyprofile.co.nz with your full name and postal address, and the business name and page number of the ad by the following Monday to go in the draw to win a Lotto ticket. Last issue it was in the Country Dog Garden Centre ad.

Feeling effects of crash five months on

CONTINUED FROM P1

surgery through the same hole."

Janine and Barry maintain a sunny outlook, but the past five months have been difficult as Janine says she is no longer "the mum I was before".

She misses the simple things, like standing on the porch waving goodbye to her kids as they wander off to school; sitting on her son Charlie's bed and reading a book; and making dinner. "Currently I'm working on how to cook dinner, and I can spend the whole day coming into and out of the kitchen, preparing something then having a rest.

"It's a big jump from when I used to come home after work and quickly get tea on," she says. "It's a lot different having to break your day up into small tasks just to get the dinner done."

Janine, who hasn't been able to work since the crash, is also trying to go outside unaided. At the moment, she only ventures outdoors if someone is home to push her in a wheelchair.

"I am the caregiver of the family, and I just always thought I'd be here looking after the others," she says. "But I think you can get really down about it and be bitter, or drive yourself insane with your own thoughts, but it's easier to be happy and grateful to be alive."



Janine and her daughter Amelia were on their way home to Paeroa when the December, 2022 crash occurred, just on the outskirts of Puriri on State Highway 26.



Photos: SUPPLIED

The driver of the vehicle that hit Janine and Amelia is facing criminal charges, confirmed by the court. They include: aggravated careless driving causing injury; driving with excess blood alcohol; driving under the influence of a drug; possession of a pipe or utensil for cannabis; and procure/possess methamphetamine.

Janine, still feeling the effects of the crash, says the impacts of dangerous driving are far-reaching.

"People see me and they say:

'I'm so pleased you're better now', and I think they want me to be, and it's lovely, but I think to myself: 'You are so wrong'.

"I guess because I can't remember the accident, I still don't feel like this is me. It's not Janine who works at the boat shop.

"To everyone... please don't drink and drive, please drive carefully."

Gary Johansen, owner of the Paeroa Marine and Cycle Centre where Janine has worked for the past six-and-a-

half years, tells *The Profile* he is looking forward to Janine's return when she is able.

"With Janine not being here, it has added extra pressure to the team to take up the hole that she has left.

"We are strongly looking forward to working alongside the ACC Recovery Team and health providers to gradually get Janine back to work and part of the team again."



Kent Wood Fires



VERMICULITE FIREBOX
15 YEAR WARRANTY
KENT wood fire & heating

We are your local Kent indoor wood fire dealer. For over 40 years Kent wood fires have been heating New Zealand homes, creating a warm, cosy haven that Kiwi's look forward to enjoying. Designed in New Zealand for your New Zealand home, Kent indoor wood fires come with a 15 year warranty, backed by service and support at your doorstep.

READ BROS.

EST. 1867

Hardware

COME & SEE US for all your wood fire and heating needs.

Flue cleaning kits - Fire guards - Wood baskets - Kindling - Fire lighters - Replacement parts for Wood Burners

SEE MORE AT

www.readbros.co.nz

308 Pollen St, Thames

07 868 6608

Accountants

The Hauraki Taxation Service Limited

- Established 1982
- For out of town independent accounting advice
- Approved agents for Inland Revenue Department
- Offices in Thames & Coromandel Town



328 Pollen Street, Thames
Ph/Fax: 07 868-9710

E: thames@haurakitaxation.co.nz

95 Kapanga Rd, Coromandel
Ph/Fax: 07 866-8660

E: coro@haurakitaxation.co.nz

Thames Tides

Wed Jun 7	Thu Jun 8	Fri Jun 9	Sat Jun 10	Sun Jun 11	Mon Jun 12	Tue Jun 13
 Morning 3:09am 0.5 3:30pm 0.3 Afternoon 9:24am 3.4 9:54pm 3.6 Sun 7:25am 5:08pm Best At 2:44am 3:15pm Set 10:31am Rise 8:05pm	 Morning 4:01am 0.5 4:19pm 0.4 Afternoon 10:16am 3.4 10:47pm 3.6 Sun 7:26am 5:08pm Best At 3:46am 4:16pm Set 11:19am Rise 9:21pm	 Morning 4:56am 0.5 5:11pm 0.4 Afternoon 11:09am 3.4 11:41pm 3.5 Sun 7:27am 5:07pm Best At 4:44am 5:12pm Set 11:57am Rise 10:35pm	 Morning 5:51am 0.5 12:03pm 3.3 Afternoon 6:06pm 0.6 Sun 7:27am 5:07pm Best At 5:38am 6:03pm Set 12:30pm Rise 11:47pm	 Morning 12:38am 3.4 12:59pm 3.2 Afternoon 6:48am 0.6 7:06pm 0.7 Sun 7:28am 5:07pm Best At 6:27am 6:51pm Last Quarter Set 12:58pm	 Morning 1:36am 3.4 1:58pm 3.2 Afternoon 7:46am 0.6 8:11pm 0.8 Sun 7:28am 5:07pm Best At 7:14am 7:37pm Rise 12:56am Set 1:24pm	 Morning 2:33am 3.3 3:00pm 3.2 Afternoon 8:44am 0.6 9:17pm 0.8 Sun 7:28am 5:07pm Best At 8:00am 8:23pm Rise 2:03am Set 1:49pm

*Not for navigational purposes. Graphic supplied by OceanFun Publishing Ltd. www.tidewiz.com www.tidespy.com www.ofu.co.nz

MOON AND FISH KEYS

New Moon First Quarter Full Moon Last Quarter

Good Fishing Fair Fishing Not So Good

TIME DIFFERENCES FOR OTHER PLACES

To determine tide times at the following places, add (+) or subtract (-) the given time difference from the Thames times listed in the calendar.

PLACE	Hr	Mn	Hr	Mn
Coromandel	-0	04	-0	04
Whitianga	-0	01	-0	05
Tairua	+0	10	+0	21
Whangamata	-0	03	-0	05
Waihi Beach	-0	12	-0	12

Sheep mauled to death in dog attack

By KELLEY TANTAU, Public Interest Journalism funded by NZ On Air

WARNING - GRAPHIC CONTENT:

A “placid and trusting” ewe that used to be petted by the children of Te Puru was one of three sheep attacked and killed by a roaming dog.

Ernie Sunlay’s Thames Coast paddock was a grim sight on the mornings of May 22 and 26, when two separate attacks by an unknown dog fatally injured his two wethers and an ewe.

“In the first attack, the dog must have been interrupted - the sheep was badly mauled about the shanks... it was bitten down to the bone,” Ernie told *The Profile*.

“The poor animal couldn’t walk and couldn’t respond to us. It had one ear ripped off and the other one was practically severed. The dog must have been quite large; it brought it down by the head but didn’t kill it. It just left it there.

“Did the owner become aware of [the attack] and call it off? But who walks their dogs or lets their dogs out that late at night?”

Ernie had to euthanise the wether.

He hoped it was just a “one off”, but overnight on Friday, May 26, there was another brutal attack.

“We checked the sheep at midnight and they were sleeping in the paddock. By about 6 o’clock in the morning, they were dead.”

Of the two further fatalities, one sheep was a wether while the sec-

ond was Ernie’s “placid and trusting” ewe.

“The kids on the way to school and the locals used to feed it... It was like a petting zoo sort of sheep.”

On the night of the second attack, Ernie believes the dog came from the main road of Te Puru and chased his wether to the Sarjants Rd end of his paddock.

The wether had bite marks to its shanks and was brought down by its head. One of its ears was completely severed and it suffered a bite to the throat.

“The ewe, being as trusting as it is, just had a bite to the throat and it was all over.”

Ernie said his sheep weren’t the only victims, either. There had been eight other sheep in Te Puru killed by an unidentified dog in the recent months.

It was time for the attacks to stop, he said.

“I believe that the dog is new to the area, not necessarily the owner but definitely the dog, because this is only a recent thing that has been happening,” he said.

“My mate has had sheep for over 18 years, and this is the first time [an attack] has ever happened.”

Ernie has contacted Thames-Coromandel District Council, and he said they were “very keen” to catch the culprit.

“I believe the owner must have a fair idea that their dog was responsible for the killings. Not only of

our sheep, but of our neighbours’ sheep. That dog must have had blood on it.”

He is calling on his Te Puru community to help him identify the dog in order for the attacks to end.

“We can’t put any more livestock in [the paddock] until we find this dog and the council deals with it.”

Council’s group manager regulatory and planning Brian Taylor told *The Profile* council had installed a humane animal trap in the area and had spoken with “a number of” known dog owners in Te Puru.

However, the trap has so far yielded no results, and because there were no eyewitnesses to the attacks on Ernie’s sheep, council can only continue to investigate and raise awareness.

“Often with dog attacks, we’re only successful if someone witnessed the dog or knew where it came from. When it happens in the middle of the night, it is difficult to get a lead, but we’ll spend a bit more time in the area,” Brian said.

Where there is evidence, council undertakes a proportionate response and proceeds with prosecution, if it is warranted.

“We take any attack seriously, and certainly when [a dog] has killed livestock or attacked a human or another animal, it is significant,” he said.



The exterior tiles have had a new anti-slip surface placed on top of them.

Mall tiles’ slippery fix

By KELLEY TANTAU, Public Interest Journalism funded by NZ On Air

The manager of Goldfields Shopping Centre in Thames has “ticked off” a job that has been at the top of his list - remedying the slippery issues of his mall’s exterior tiles.

Back in August, 2022, *The Profile* reported that a petition had been started to replace the tiles outside Goldfields after a man passed out after slipping on them.

Manager John Freer said at the time that anti-slip coating would be applied to the tiles, but it was soon discovered that the coating “didn’t work”.

“We are well aware that the tile has been a major issue at Goldfields for quite some time, and

about six months ago, we attempted a surface that didn’t work,” he told *The Profile* on May 24.

“We have now gone to another supplier.”

Mr Freer said he enlisted the help of a different company, and it has since cleaned the tiles “right back to their original state” and put a new surface on top of them.

“It actually has a slip category, and [the company] comes and tests it to make sure it’s up to the appropriate standard,” he said.

“The exterior tiles are the ones that we know get very slippery when it rains. In particular, for people wearing gumboots or jandals, it’s not good. Luckily, we’ve finally found a solution.”



FOR EXCEPTIONAL WINDOWS & DOORS

fairview
EXCEPTIONAL WINDOWS & DOORS

FAIRVIEW THAMES

10 Millar Place, Kopu, Thames

P: 07 868 9105 | office@fairviewthames.co.nz

www.fairviewthames.co.nz

Love your view

Scott Simpson

MP for Coromandel

Contact me anytime

0800 550 330

mpcoromandel@parliament.govt.nz

scottsimpson.co.nz

scottsimpsonmp



National NZ House of Representatives
Authorised by Scott Simpson,
614 Pollen St, Thames.

LA Z BOY
Mid Winter **SALE**

25% - 50% off*
all La-Z-Boy!



*T&C's apply. Participating stores only. Prices & promotions may differ between stores. Please see in-store for more details or go to la-z-boy.co.nz

BAXTERS

LA Z BOY
FURNITURE GALLERY

Live life comfortably

FURNITURE & BEDS R US

205 SEALEY ST, THAMES

PH 07 868 6128

John Bertrand Collectables Buying in Thames, Hauraki and Coromandel Regions This Week

Once again the buyers from Wellington based company John Bertrand (Collectables) Ltd are coming to Thames, Hauraki and Coromandel regions this week. Mr Tony Grant from the company says "This is a great time to bring along those unwanted items you've sorted out during the lockdown period and turn them into cash". Particularly wanted by the buyers are Gold and Silver (in any of its forms) and Collectables such as Old Coins and Banknotes, War Medals, Old Wind-up Watches and other interesting Old Collectables.

"We are keen buyers, especially of the items in the list below" said Mr Grant. "I'm sure everyone has unearthed something we want in the past few weeks and we would like to see it! Nothing is too small for our consideration. We are just as happy to buy one item as we are buying 1,000 items". The buyers will be in convenient locations in Thames, Hauraki and Coromandel Regions this week (see details below). As Tony Grant says "if you are in any doubt about any items you wish to sell, take them along for an instant appraisal"



Mr Anthony (Tony) W. Grant

Fellow of the Royal Numismatic Society of New Zealand Incorporated
 Director and Buyer
 John Bertrand (Collectables) Ltd
 Author of the John Bertrand NZ Coin & Banknote Catalogue

Gold & Silver At Near Record Prices

During these uncertain times we have seen a sharp increase in the price of precious metals. The gold price in New Zealand is at near record levels so gather up all your unwanted items and take them along to the buyers. Tony Grant says "We can buy old gold items in all forms, including Jewellery (Rings, Chains, Brooches etc), Coins (Sovereigns and the like), Alluvial (River Gold), virtually anything, even Gold Teeth! We also need all Sterling Silver including Cups, Tea Services, Cutlery and Old Coins" he said.



Interesting Small Collectables Wanted

The buyers from John Bertrand (Collectables) Ltd, visiting Thames, Hauraki and Coromandel Regions this week, are happy to look at any interesting items, for example vintage pocket and wristwatches such as Rolex, Men's Omega, Breitling and gold watches etc. Also wanted, pre 1950's picture postcards, Maori and Pacific artefacts, old fountain pens and other small antique or historical items.

"If you have something unusual which you would like to sell, please bring it into one of our venues, we would like the chance to at least have a look at it" said Tony Grant, buyer for the Company. "We will consider anything which may be of interest to a collector" he said.

Some Big Dollars in Early Banknotes

Early New Zealand Banknotes dated before 1932 are currently fetching big money! This is according to Mr Tony Grant, author of the *John Bertrand New Zealand Coin & Banknote Catalogue*. Mr Grant is in Thames, Hauraki and Coromandel Regions this week on a buying trip for John Bertrand (Collectables) Ltd and would be very keen to see any of these issues. "We will pay at least \$300 for any undamaged Ten

Shilling or One Pound banknote from a New Zealand trading bank dated 1932 or before.

Denominations of five pounds and higher would be worth from \$700. "Any banknote dated prior to 1900 would be worth at least \$1000" said Mr Grant.

Also purchased are any Reserve Bank of New Zealand pre-decimal issues, especially 50 Pound notes. All overseas banknotes are also wanted, especially early Pacific Island issues.

Collectors Need War Medals

Currently, throughout NZ and the world there is a big demand by collectors for war medals. These cover all wars right through from the New Zealand Land Wars and the Boer War, to the First and Second World Wars and the later Korea and Vietnam conflicts. New Zealand Servicemen and Women first served overseas in the Boer War in South Africa around 1900 and the war medals awarded for this service are needed by the buyers, as are any other Medals from early New Zealand and the New Zealand Wars.

General service medals from both the First and Second World Wars will also be purchased, but as can be imagined these were awarded in fairly large numbers. "If a group of medals has any special award for bravery such as the Military Medal, Military or Flying Cross or other medals for Distinguished Conduct or Meritorious Service, these can add great value to a group" stated Mr Tony Grant, buyer for John Bertrand (Collectables) Ltd. "Many families have old medals, some dating back to early Imperial days, that they are not sure what to do with. These are better off in the hands of collectors who will look after them. We will be happy to look at any war medals whatsoever, just bring them in to venues" he said.

Old Coins Can Toss Up a Rarity

In lockdown when you sorted out your drawers and cupboards you may have come across some old coins. You just never know what rarities may be lurking there. The advice of Tony Grant from John Bertrand (Collectables) Ltd is to bring them in to the venues and have them appraised. "We want to see any old foreign coin accumulations. We are quite happy to go through your coins on the spot and give you an idea what we can pay. You just never know what can turn up. We are also particularly keen to buy pre 1946 New Zealand Silver Coins for at least 10 times their face value" he said.

JOHN BERTRAND (COLLECTABLES) ARE BUYING NOW!!

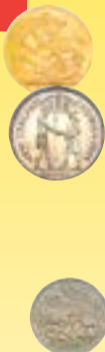
OLD GOLD

- Unwanted Jewellery or Broken Rings
- Gold Chains
- Gold Watch Cases
- Alluvial (River) Gold
- Dental Gold
- Gold Coins
- Gold Racing & Trophy Cups



COINS

- All Gold & Silver Coins
- Gold Sovereigns
- Gold Half Sovereigns
- NZ Silver Coins 1946 & Before (at least 10 times face value)
- Also wanted NZ & World Coins after 1946
- Australian Silver Coins to 1963
- English Silver Coins to 1946
- NZ 1935 "Waitangi Crown"
- USA Coins up to 1964
- Old Collections & Accumulations of World Coins
- Modern Collector's Coins & Sets
- NZ Reserve Bank Sets
- NZ Pennies or Halfpennies Please*



BANKNOTES

- NZ & Australian "Trading Bank" Notes pre 1932 (e.g. Bank of New South Wales, Bank of NZ etc)
- Reserve Bank of NZ Pre-Decimal Notes
- Any £20, £50 or £100 Notes
- Hong Kong & Malayan Banknotes
- Australian Pre Decimal Notes
- Australian "Star" Notes
- Early Fijian and Samoan Banknotes
- NZ Traders Promissary Notes (1840s)
- NZ Government Debentures
- NZ Banknotes overprinted for use in Fiji, Cook Islands etc
- Postal Notes
- All other World Banknotes



GOLD & SILVER

- Racing Cups
- A&P Show Cup
- Sports Cups
- Presentation Keys & Trowels
- Show Pieces
- Sterling Silver Tea Sets
- Sterling Silver Cutlery
- Scrap Gold & Silver
- *No EPNS or Silver Plated items Please*

WRIST & POCKET WATCHES

- Gold & Silver Pocket Watches
- Any Rolex Watches
- Omega Gents Watches
- Any Breitling, Jaeger Le Coultre, Vacheron & Constantin, Patek Philippe, or IWC Watches
- Moon Phase Watches
- Chiming or Alarm Watches (Pocket or Wrist)
- Military Watches
- Divers Watches
- All other pre 1950s wind up watches (parts value only)
- *No Quartz or Battery Operated Watches Please*



No item too small for our consideration

TOKENS

- NZ & Australian "Tradesmen's" Tokens
- NZ Transportation Tokens
- Railway Passes
- Tram Tokens (not Dunedin Tramways)
- Presbyterian Church Communion Tokens
- Bread Tokens
- Theatre, Cafe, Discount Tokens etc
- Any other tokens relating to early New Zealand

COLLECTABLES

- Albums & Accumulations of Pre 1920s Postcards (used or unused)
- Old Fountain Pens
- Maori & Pacific Artefacts

WAR MEDALS ETC

- The New Zealand Wars & Boer War Medals
- 1st World War Medals
- 2nd World War Medals, Stars etc
- Orders and Decorations
- Korea & Vietnam Medals
- Antarctic or other Polar Medals
- Fire Brigade Medals
- Lodge Medals
- Shooting Medals
- Military Badges and all other Military Medals
- Gold returning Fob Medals or "Tokens of Honour" from residents of small town New Zealand

HISTORICAL MEDALS

- A&P Show- Gold, Silver & Bronze Medals
- Commemorative Medals & Medalets
- Prize Medals (Gold & Silver)
- Sports Medals (Gold & Silver)
- Life Saving Medals
- Shipwreck Medals
- Coronation Medals
- etc, etc, etc



JOHN BERTRAND (COLLECTABLES) LTD OUR BUYERS ARE IN YOUR AREA THIS WEEK

PAEROA	Fri 9 June	War Memorial Small Hall, 144 Normanby Road	11.45 am to 1.45 pm
THAMES	Sat 10 June	Thames Citizens Band Hall, 301a Queen Street	9 am to 12 noon
COROMANDEL TOWN	Sat 10 June	Coromandel Citizens Hall, 455 Kapanga Road	2 pm to 4 pm
WHITIANGA	Sun 11 June	Whitianga Town Hall Super Room, 24 Monk Street	9 am to 11 am
TAIRUA	Sun 11 June	St Francis House, 244 Main Road	12.30 pm to 2 pm
WHANGAMATA	Sun 11 June	Whangamata Memorial Hall, 326 Port Road	3 pm to 4 pm

WE WANT TO BUY - CASH-IN NOW



John Bertrand The Trusted Name In Numismatics Since 1965!

John Bertrand (Collectables) Limited
 T: 04 232 9832 • E: info@bertrand.co.nz
 Level 1 Harcourt's Building, 215 Main Road,
 Tawa, Wellington 5028
 PO Box 323, Wellington 6140



Members of the Australasian Numismatic Dealers Association and the New Zealand Numismatic Dealers Association



NO APPOINTMENT NECESSARY
 Please note: If you sell anything to us, suitable ID is required. Please also bring your bank account details for the deposit of funds for larger purchases.



\$4.8m earmarked for new library hub

By KELLEY TANTAU, Public Interest Journalism funded by NZ On Air

Story time for children; digital drop-ins for the technologically challenged; school visits and genealogy mentoring and film sessions. These are all things the Paeroa and Waihi libraries have and Ngātea lacks.

But now, with Hauraki District Council voting to spend \$4.8 million on creating a new community hub for the Hauraki Plains, the three libraries will be on a level playing field.

It's also hoped they'll attract a new generation of users.

Options for upgrading the Ngātea Library and Service Centre were first considered as part of council's Long Term Plan discussions back in 2018, and following extensive feedback from the community - including a petition that was signed by more than 1200 people - it was decided that the location would remain at the site near Hugh Hayward Domain.

Council voted to remove the current centre and rebuild a purpose-built facility which would increase the space and services offered by the existing library.

Renamed the Plains Community Hub, elected members last week opted to set a working budget of \$4.8m for the build.

The budget includes \$3,667,716 of unbudgeted expenditure and budgeted capital

expenditure of \$1,132,284 from 2022/23 to the 2023/24 financial year.

"Construction costs have increased significantly after Covid and with inflation, and as a



The Ngātea Library and Service Centre will be replaced with a facility that's up to par with the Paeroa and Waihi libraries.

File Photo: SUPPLIED/HDC

minimum, the Community Hub should be the same style and quality as what was built in

Paeroa and Waihi, and we believe with this budget we can achieve that," Mayor Toby Adams said.

A working group was also established to drive the district-funded project and included councillors Jo Tilsley, Ray Broad, Paul Milner, Anne Marie Spicer, and Stephen Croymans.

Mayor Adams said it was important for the working party to contain councillors from across the district.

"This is built for our district, our people, and it's getting paid for by everybody. We were elected to make decisions on [the community's] behalf, and we don't have to run back to them with every single decision we make just to check we're doing it right."

Plains ward councillor Ray

Broad said he was "really pleased" and hoped the new facility would be as well-used as the Paeroa and Waihi libraries.

"When you look back at the 70s when they built that [Ngātea] building, it was fit-for-purpose, but we've completely changed how libraries operate. Thank you to the councillors for supporting it, and let's hope we get onto it quickly."



MP: Coro needs funds

The \$9 million of unspent cyclone relief funding originally destined for Hawke's Bay should be redirected to the Coromandel, Coromandel MP Scott Simpson says.

"Many Coromandel businesses are still doing it tough as the result of cyclones, and the ongoing closure of State Highway 25A only makes their situation worse.

"Instead of returning the nearly \$9 million of unspent cyclone relief funding to Wellington, it should be reallocated to the Coromandel where it could be the difference between survival or bust for local businesses.

Coromandel applications for cyclone support funding was oversubscribed and many businesses had their application declined, he said. "More often than not, businesses that were lucky enough to be granted funding received less than they had sought.

"The Coromandel region continues to be impacted by weather events. This week's flooding at Waihi Beach further highlights the challenges we face as we head into winter.

"It is outrageous that money earmarked to support our devastated regions could be sent back to the capital when there is still such a desperate need for support in our communities."

Thames-Coromandel District Council said it distributed a total of \$8.1 million to 501 Waikato applicants of the government's Business Recovery Grants funding, which has now ended.



KING'S BIRTHDAY

BED SALE

UPTO 65% OFF

FREE LOCAL DELIVERY
ON PURCHASES OF \$999 AND ABOVE
Valid till: 11/06/2023

FREE BED REMOVAL
ON PURCHASES OF \$1999 AND ABOVE
Valid till: 11/06/2023

FREE PILLOWS
2x MICROFIBRE PILLOWS WITH EVERY BED
Valid till: 11/06/2023

Shop 22, Goldfields Shopping Centre, Thames
Mon-Fri 9am - 5pm / Sat 9am - 4pm / Sun 10am - 3pm Ph: 07 868 3332

Beds4U reserve the right to amend any misprints or error within this advertisement. Only one coupon redeemable per invoice.

.co.nz

Your local sleep experts

King's Birthday honours announced

Four people from the Hauraki-Coromandel region have been recognised in this year's King's Birthday honours list.

This includes Waihi Beach rugby great Wayne Smith, Waitakaruru's Peggy Barriball, and Whitianga's Derek Collier and Dr Shirley Jülich. This year's King's Birthday and Coronation Honours List includes 182 recipients from around New Zealand.

WAYNE SMITH

Wayne Smith has been appointed Knight Companion of the New Zealand Order of Merit in this year's King's Birthday Honours for services to rugby.

Sir Wayne, of Waihi Beach, was made a Companion of the New Zealand Order of Merit in 2012 for his services to rugby and has led the men's and women's sides to Rugby World Cup victory in recent times.

Sir Wayne was Assistant Coach of the All Blacks at the 2011 and 2015 Rugby World Cups and Head Coach of the Black Ferns at the 2022 Rugby World Cup. He took over coaching of the Black Ferns six months prior to the tournament kicking off, where he helped create a better environment for the players to focus on playing styles, which led the Black Ferns to their sixth World Cup title.

Through the duration of the Women's World Cup, he was an advocate for women's rugby,

providing exposure to the team. Mr Smith is a Life Member and was previously a long-term Patron of the New Zealand Foundation for Conductive Education, which helps children and adults with physical disabilities such as cerebral palsy.

PEGGY BARRIBALL

More than 30 years of service to the Waitakaruru and Thames community has been recognised for Peggy Barriball, who has been awarded the Queen's Service Medal.

Mrs Barriball was appointed a Justice of the Peace in 2010 and has held several roles with the Hauraki Justices of the Peace Association, including president and vice president. She established a JP service desk in Ngatea to provide notary services to the rural community in Hauraki Plains, and has been a financial mentor and governance member of the Thames Budgetary Services for 16 years. She has also been involved with the New Zealand Plunket Society for 30 years and has held various roles including president, secretary and treasurer, along with being president of the Waitakaruru Playcentre Association.

Mrs Barriball has held management/governance roles with the Western Firth Catchments Group Trust, Family Safety Services Trust, Seagull Centre Trust, Thames Valley Special

Olympics and Waitakaruru Community Hall Committee. She has supported the regional farming community by managing events, including ensuring that the Waitakaruru School Calf Club and Hauraki Plains Agricultural Club Group Day went ahead in 2022, despite Covid-19 disruptions. Mrs Barriball was a Trustee and Treasurer of the Treasury Research Centre and Archive in Thames for three years and has been Treasurer of A Place at the Table Trust since 2018, which provides a community Christmas lunch for more than 100 people annually.

DR SHIRLEY JÜLICH

Whitianga's Dr Shirley Jülich has been made an officer of the New Zealand Order of Merit for services to restorative justice and survivors of sexual abuse. Dr Jülich has been involved in the restorative justice community in New Zealand since the mid-1990s, focusing on facilitating survivors of sexual abuse to experience a sense of justice. She was an early member of Te Oritenga, New Zealand's first community-based restorative justice provider group.

In 2001 she completed her doctoral thesis on restorative justice and child sexual abuse at Massey University, where she has since held academic and teaching roles. Based on her doctoral research, she initiated

Project Restore in 2005, which offers restorative processes specifically designed to address sexual violence. She has maintained a role as a Trust Board member and helped grow the group to the point where it now receives referrals for service from the community and the District Court system.

She is globally recognised as a leader in the use of restorative practices addressing sexual violence, and sought after as a keynote speaker, author and educator. Since 2017 Dr Jülich has also been a member of the Mercury Bay Cancer Support Trust, focusing on supporting its work to assist people experiencing the debilitating impacts of cancer.

DEREK COLLIER

Derek Collier has been awarded the Queen's Service Medal for services to Fire and Emergency New Zealand and the community.

Mr Collier has been involved with Whitianga Volunteer Fire Brigade since 1987 and has been Deputy Chief Fire Officer since 2018. He is heavily involved with a range of brigade activities from training recruits to judging national and international competitions, fundraising and catering for functions. He was made a Life Member of the Brigade in 2010. He was an original member of the Brigade's Road Crash Rescue Team, competing in New Zealand and Australia,

including winning the 2007 Auckland Provincial Challenge and title of Best Team Leader. He came second overall as Team Leader at the 2007 Australasian Challenge. Prior to the establishment of a Rescue Helicopter service in the area, he flew for Mercury Airlines which operated an Emergency Air Ambulance. Mr Collier has been a Justice of the Peace in Whitianga since 2004.

He offers his local business as a location for the public to engage his JP services. Mr Collier is regularly involved with the Hauraki Justice of the Peace Association, mentoring newly appointed JPs and regularly contributing to education sessions held in Whitianga.

TRANSITION TO KSM

Prime Minister Chris Hipkins has confirmed the Queen's Service Order (QSO) and Queen's Service Medal (QSM) will be renamed in honour of King Charles III.

However, transitional matters currently being worked through mean this King's Birthday weekend, New Zealand will again recognise a number of recipients of QSOs and QSMs in its Honours List. Similar appointments are expected to be made in the New Year Honours List 2024, and the first honours using the KSO and KSM titles are likely to be announced as part of the King's Birthday Honours 2024.



Boost

your whānau

We all know what we need to do to boost our health and wellbeing. It starts with looking after ourselves as well as we can – eating and sleeping well, and being active, all help.

One of the best ways to boost our immunity against COVID-19 is to get the latest vaccine booster. It will help protect us from getting really sick. And the good news is, getting a booster is simple.

Boost yourself now

To check if you're eligible and make a booking:

- call 0800 28 29 26 or
- visit **BookMyVaccine.nz**

Run for a Reason: students tackle mental health

By ALICE PARMINTER, Public Interest Journalism funded by NZ On Air

When Paeroa College head students Jamie Lee Owen and Grier Buchanan saw a gap in the conversation around mental health issues, they decided to address the problem head-on.

Their solution: a fun run and walk event.

Dubbed Run for a Reason, the inaugural event will see participants tackle either a 2km or 4km walk/run to raise money for mental health charity I Am Hope.

College head of wellbeing Jamie Lee said the event was a way to “just get people out there, talking about mental health, and raising money for a good cause too”.

“The whole purpose was just to really get people talking about mental health and suicide.”

The deaths of a student in July last year and a recent school leaver in December had shaken the student population, the teenagers said, and they wanted to let people know they were not alone.

“[These] conversations are really important, and it doesn't have to be a taboo thing,” Jamie Lee said.

“I think we're in a position, especially as head students, where we can say: let's talk about it. If you feel like you're struggling, reach out. It might make people feel like they can reach out if it was talked about



Grier Buchanan, left, and Jamie Lee Owen are opening a conversation about mental health. Photo: ALICE PARMINTER

more, that was really important to us.”

Head of community Grier agreed, though it wasn't always clear who to reach out to, she said. “As head students, we feel like the school hasn't really gone too deep into the topic, and so rather than just skim over the top, we really want to delve into that and get some real conversations going,” she said.

The students said help was available at the school for any-

one who needed it.

“If you come into the school and say you're struggling, you're gonna get referred to a councillor, nine out of ten times, that's how that goes,” Jamie Lee said.

Run for a Reason will take place on June 11, beginning at Paeroa Domain and continuing along the rail trail behind the school. Tickets are available online, and participants are encouraged to dress in green.

The event is open to anyone

from the wider Hauraki community, and is being run with support from the Hauraki District Council and several local businesses.

“This is a whole Hauraki-wide event: we're getting in contact with other schools, we're just hoping for it to be more than just a town,” Grier said.

“We have a Facebook page, Paeroa Run for a Reason, and so on there we're hoping to not just talk about people's reasons

Where to get help

Need to talk? Free call or text 1737 to talk to a trained counsellor.

Lifeline 0800 543 354

Youthline 0800 376 633, free text 234, email talk@youthline.co.nz

Samaritans 0800 726 666

Suicide Crisis Helpline 0508 828 865 (0508 TAUTOKO)

thelowdown.co.nz Web chat, email chat or free text 5626

What's Up 0800 942 8787 (for 5 to 18-year-olds). Phone counselling available Monday-Friday, noon-11pm and weekends, 3pm-11pm. Online chat is available 3pm-10pm daily.

In a life-threatening situation, call 111.

for going in the event but also give advice about helplines, give them places that they can actually go, resources.”

Jamie Lee said any money raised for charity was a bonus, but creating a safe space to talk was the most important part of the event.

“That's 100 per cent what this is all about, just talking about it, because I think that that's one of the most powerful things you can do to break stigmas.”

DETAILS: Run for a Reason, June 11, 10am at Paeroa Domain. Book tickets at eventbrite.co.nz/opaeroa-college-66434205793.



Thames Autos



A Division of Takarini Motors Ltd



R.M.V.T.



HOME DEMONSTRATIONS AND DELIVERIES AVAILABLE



WE CAN COME TO YOU

— www.thamesautos.co.nz —

2016 Holden Cruze
1.8Ltr Auto, NZ New, Top Value



\$11,990

2020 Kia Sportage Urban LX
2Ltr Auto, One Owner, 36km, Like New



\$26,990

2012 Opel Astra GTC Coupe
Turbo, 6spd Manual, SPECIAL CAR



\$10,990

2010 Toyota Aurion
V6 Auto, NZ New, Top Spec Model



REDUCED \$10,990

2010 Toyota Auris
1.8Ltr Auto, 5 Door Hatch



VALUE AT \$8,990

2013 BMW XI
Supurb Condition



JUST \$11,990

2006 Nissan Tiida
1.5Ltr Auto, Good Kms and Condition



ONLY \$5,990

2018 Honda Jazz RS
6 Speed Manual, NZ New, Low 65kms



SPECIAL \$16,990

LEYLAND STOWE

Mob: 027 355 5152 Ph: 07 868 8981
or **0800 868 898**
609 Pollen St, Thames RMVT
thamesautos@xtra.co.nz



No Deposit Finance available on all vehicles. Full workshop servicing & repairs available including Auto Electrical service



VTNZ THAMES IS HERE FOR YOU

Come and see the friendly team for your WoF,
or other services including:

- ✓ CoF A
- ✓ CoF B
- ✓ Vehicle Registration
- ✓ Vehicle Condition Assessment
- ✓ Road User Charges
- ✓ Pre-Purchase Assessment

📍 19 Kopu Road, Waikato 📞 07 867 9155

🕒 Mon - Fri 8.00am - 4.30pm

🌐 vtnz.co.nz

vtnz

Firefighters awarded fire service milestones

By GORDON PREECE

A Maramarua firefighting duo have reached a quarter-century each with the fire service, including the first female of the brigade to kindle the milestone.

Rose Sparrow and deputy fire chief Glenn Holtham received their 25-year gold stars on May 20, along with awards presentations for 16 other Maramarua volunteer firefighters.

Maramarua resident Rose told *The Profile* she was "still coming to terms" with the accolade and being the first female member of the 20-member brigade to receive the honour.

"I don't think it has quite sunk in yet, it's just gone very quickly and I think I'm still coming to terms with it," she said.

"Since I was at primary school many years ago, I always wanted to be a firefighter but back then it just wasn't a thing for females.

"But when I went to Maramarua [in 1989], my husband Mike Sparrow joined and my brother Doug Foster joined, and when I was able, I joined [in 1997].

The 62-year-old said other women "shouldn't be scared" to enter the ring of fire.

"We can do the job, you just knuckle down and do it and don't expect the guys to take it lightly," she said.

"I've attended a lot of motor vehicle accidents, too many actually on [State Highway 2], been to a couple of scrub fires and stuff in the summer, I have just about done everything.

"I carry my gear with me and



Clockwise from top left: Waikato group manager Alan Doherty, left, with Rose Sparrow. Glenn Holtham, right, receives his award. Doug Foster, Mike Sparrow, and Howard Cole, each with Amber Hollis. Photos: SUPPLIED

I'm on call all the time... there have been many times where we sat down to a roast dinner and the bells have gone off and the roast dinner has gone back into the oven with the oven switched off until we get back."

Rose, who is also a support worker at Pukekohe, said she'll remain in the brigade for as long as she is able.

Glenn Holtham, who also lives in Maramarua, said he first geared

up for his firefighting career in 1996 at Puriri Fire Station before transferring to Maramarua in 1997.

"I wanted to get into helping the community and a flyer was sent around looking for volunteer firefighters, and 25-26 years later I'm still standing," he said.

"It got to 25 years and you sit back and think it's a very long time to be volunteering at the same thing, so it's all sinking in when

you fathom how much time it is. "The comradery of the fellow firefighters who help out the people in this community, or people passing through the community, and the new friendships made has been quite good."

The 46-year-old, who became the deputy chief in 2016, said he had always appreciated the community support.

"We've never had a problem being supported by the community

and with a Facebook page, we get thanks from the community quite often, pats on the back, telling us we've done a good job," he said. "The community have always been good in their assistance whether it be to upgrade the fire station, and in the early days before we were fully funded, fundraising for opportunities."

Glenn, who is also a machine operator in the Counties Manukau area, said he'll "have a crack" at sparking 50 years.

"I still find myself surprised about the situation of an incident when I turn up, like how a car has ended up where it is, or if an unlucky truck has had a tree fallen on top of it, so I'm sure there's still some surprises out there for me," he said.

In addition to Glenn and Rose receiving their gold star awards, 16 Maramarua volunteer firefighters were honoured on May 20. Chief fire officer, Howard Cole, received the two-year gold bar for his 31-year service. Doug Foster and Mike Sparrow received the same award for their 29-year service. Daniel Hair and Shaun Cranfield received the three-year silver bar for their 18-year service. Lynette Platten received the fourteen-year long service and good conduct medal. Paora Jensen, Richard Haynes, and Stephen Beazley received the five-year medal. Dave Hatherley, Josh Holtham, Paora Jensen, and Kayleigh Hatherley received the three-year service certificate. Jarrod Cranfield, Luke Young, Isaac Lyons, and Kirsty Haynes received the two-year service certificate.

NEWSPRINT

Roll ends for sale
800mm wide, varying lengths,
\$10 ea

Available at the
Valley Profile office:
2 Queen St, Paeroa
Call first to check availability:
Ph 0204 0944 853



Perfect for school holidays
- art and craft,
moving, table coverings
and more

The Valley
Profile



PH: (07) 868 9422

Stephen Young

0274 820 536



P.O. Box 768, Thames

DEPOT: 26 QUEEN ST, KOPU THAMES



New in stock !!
Reversible capes
can also be used
as a blanket

- Alpaca and mohair throws
- Possum Merino Gloves
- Wall Art
- Handbags & Accessories
- Cushions
- Loyalty Cards
- MM Linen 100% cotton bedspreads
- Jewellery
- Gold Card Discounts

Lynne's

500 Pollen St, Thames - 868 8725



NEW MITSUBISHI ECLIPSE CROSS PHEV

- 2.1L/100KM'S
- 2 X ELECTRIC MOTORS

from
\$52,990
plus on road costs



IN STOCK NOW

Vehicle is eligible for
NZ Government
Clean Car rebate of

\$5,750

See NZTA website for further details.



Saunders Mitsubishi

0800 11 11 10

201 Pollen St • www.saundersmitsubishi.co.nz

A/h: Warren Hurley 021 941 963

Paul Saunders 021 220 0098

Burning through the pain

Thames Valley firefighting teams conquered the Sky Tower Challenge at Auckland on May 20, raising thousands for Leukaemia and Blood Cancer NZ. The Waihi Fire Brigade team, which included Jason van der Hulst, Joel Clark, and Josh Petterd, raised \$20,425. The Thames Fire Brigade, which consisted of Thames High School students Millar Morton and Daniel Palmer as well as Kaira Gordon, Claudia Chaplin, Ashton Baird, and Shane Bromley, raised \$7469. The Turua Tutus Team of Hannah Thorburn and Stacey Frow raised \$1146. Donations remain open for a month after May 20. To donate visit www.firefighterschallenge.org.nz/donate.



Waihi Volunteer Fire Brigade team Jason van der Hulst, left, Josh Petterd, and Joel Clark.

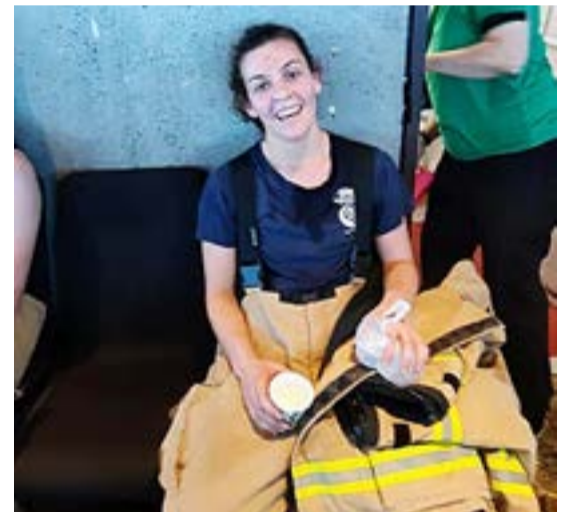
Photos: SUPPLIED



Turua Tutus Team Hannah Thorburn, left, and Stacey Frow.



Thames High School head boy Millar Morton.



Thames volunteer firefighter Claudia Chaplin.



Thames volunteer firefighter Kaira Gordon.



Thames High School year 13 student Daniel Palmer.

AUTOWORKZ

THE A TO Z OF AUTO REPAIRS

FOR WOFS, LUBES AND ALL MECHANICAL REPAIRS

PRE 2000'S MOTORBIKE RESTORATIONS, SPECIALIZED PAINT WORK & REPAIRS

CALL DALE 867 7195 | 027 372 4797
autoworkz70@yahoo.com
KOHUNUI ST, NGATEA

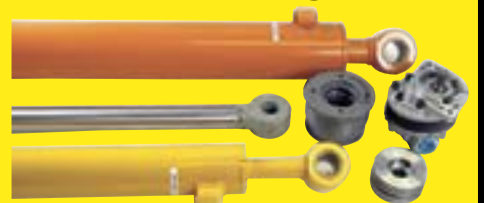


Hydraulink Thames

24/7 MOBILE SERVICE

We do Ram Repairs and Servicing

- Hydraulic hose & fittings
- Breakdown services 24/7
- Industrial hoses
- Lubricants & Oils
- Ram repairs & servicing
- General Engineering



Ph 07 868 5435
0274 990 924



14C Kopu Road
Kopu, Thames

Best under pressure

Meet the LOCALS

A big welcome to all new farmers and their families who have made the big shift to our beautiful part of the world for the new season! In this special *Valley Profile* lift-out feature, you will find information and messages of welcome from our district Mayors, Coromandel MP and local businesses. We hope your big move was a breeze, you're settling in well and you enjoy exploring the beautiful Hauraki and Thames-Coromandel districts!

- *The Valley Profile team*







**8-page
liftout!**



HAURAKI TYRE and BATTERY

Welcome to all the new families.

- WE...  stock all major tyre brands
 do puncture repairs
 do wheel alignments & balancing
 stock Exide batteries

You can find us at

**314 Pollen St, Thames
Ph 868 8182**



PAEROA FARM SERVICES

118 Normanby Road, Paeroa | 07 862 8263
paeroafarmservices.co.nz

Welcome to all the new families -
come in and say Hello!

"Servicing Paeroa & surrounding regions since 1979"

HERE TO COVER ALL YOUR DAIRY NEEDS
MILKING MACHINE & EQUIPMENT
EFFLUENT & IRRIGATION
WATER FILTRATION & PURIFICATION
PUMP SUPPLIES & INSTALLATION

Nau mai haere mai to Hauraki District



Thanks for choosing us

It's great to have you here. Whether you're into hunting, fishing, exercising, eating out or shopping, we know you're going to love living in our little corner of the paddock. Whatever floats your boat there's no need to go anywhere but your new backyard.

Need to get hold of us?

If your enquiry is urgent and requires immediate attention, e.g. a water pipe break, flooding, roaming dogs, excessive noise, stock on the road, a safety issue etc., phone 24/7 on **07 862 8609** or **0800 734 834**.

For less urgent enquiries log a request for service on our website, Facebook message, email or phone us.



0800 734 834 or 07 862 8609



www.hauraki-dc.govt.nz



info@hauraki-dc.govt.nz



www.facebook.com/haurakidistrictcouncil



PO Box 17, Paeroa 3640



Our offices:
1 William Street, Paeroa
84 Orchard West Road, Ngātea
40 Rosemont Road, Waihi

If it weren't for our drains, where would we be?

Most Hauraki Plains farmers would agree with Fred Dagg that they'd be lost without their gum boots. But if it weren't for its drains, the Plains would also be in deep water.

Thanks to an innovative land drainage network that includes drains, floodgates, pumps and stop banks, around 64,000 hectares of peat wetland and kahikatea forest is now farmland.

There are a few rules about urban and rural drainage that you need to know about, especially if you have our drains, stopbanks, floodgates or pumps on your property.

You'll find everything you need to know at www.hauraki-dc.govt.nz/rules-regulations-licences/bylaws



Refuse Transfer Stations

There's no kerbside collection in our rural areas, but you can take your rubbish, garden waste and scrap metal to our refuse transfer stations in Paeroa (weigh station available) and Waihi - fees apply. Drop off of recycling including rigid plastics 1, 2 and 5; soft plastics; liquid paper board cartons; paper; cardboard; aluminium; tin cans and glass bottles and jars is free. We accept Eftpos, debit and credit cards. No cash facility.

For locations, opening hours, disposal fees and more information about recycling go to www.hauraki-dc.govt.nz/rubbish-recycling



Please take care on our roads

A large portion of Hauraki District's roading network (44%, about 230km) lies on soft, moisture sensitive organic (peat) and marine (gley) soils. The extreme drought of 2019/2020 and the recent severe weather events, means that some of our roads on the Plains are still showing signs of rutting and settling which causes uneven road surfaces.

Keep both hands on the wheel, drive to the conditions and always expect the unexpected on our rural roads. Watch out for roadworks and slow down for the temporary speed limits in place.

Find out more about the Hauraki Plains Roads, Stock Crossing Bylaws and permits at www.hauraki-dc.govt.nz/roads



GET READY

Get ready, get through

Extreme weather events are becoming more frequent, with flooding being the most common hazard to deal with in our district. Being prepared and knowing what action to take is the key to getting through an emergency.

Learn more at www.getready.govt.nz



Rural Support

A shoulder to lean on

Please remember if you're ever finding it hard to pull your gumboots on in the morning, the Waikato-Hauraki-Coromandel Rural Support Trust offers an amazing shoulder to lean on.

Whether you're concerned for yourself, or for someone else, contact them on **0800Ruralhelp** or **0800 787 254** anytime, or visit their website for more information <https://www.rural-support.org.nz/>



Dog registrations due 31 July

Hey, good news! With proof of desexing, you'll pay a reduced dog registration fee. Dog registration must be renewed annually by 31 July to avoid penalties. Contact us now to register your pooch.

On a rural property with more than three dogs?

You'll pay the usual fee for the first three, then there's a discount for the rest. Puppies need to be registered when they are three months old. Find out more about dog registrations and microchipping requirements at www.hauraki-dc.govt.nz/rules-regulations-licences/dogs-other-animals



Get to know the locals

Follow us on Facebook at www.facebook.com/LoveHauraki/ for your guide to local businesses and services.

For water saving tips on the farm check out www.hauraki-dc.govt.nz/water/smart-water-use

New to our district?

Make sure your human gets you registered by 31 July



Meet the LOCALS

ADVERTISING FEATURE

Welcome to Hauraki and Thames-Coromandel districts



Thames-Coromandel district Mayor Len Salt

Hāere mai. And welcome to Thames-Coromandel District. Whether you've made the decision recently to move to the Coromandel or you're already a long-time resident, we're super pleased you are here.

The Coromandel really is a beautiful and diverse part of New Zealand.

While we've taken a hit from the weather in recent months we've got an energetic approach to rebuilding and recovery that will ensure our district is in better shape and more resilient to extreme weather than ever before.

Despite some high-profile news coverage of damaged roads in our district, the entire Coromandel is accessible but it may take a bit longer to get where you're going. Check the Waka Kotahi/NZTA website's journey planner for State Highway conditions and our TCDC website for local roads.



Explore your new backyard in Hauraki and Thames-Coromandel districts.

File Photo: LOGAN DODDSS

The outstanding natural beauty that draws local and visitors alike is still here, but check with the Department of Conservation to make sure the track, back-country hut or campground you want to visit is in operation.

The path to Cathedral Cove, for example, is closed for now because of a dangerous slip, but it can still be visited from the sea and there are many charter operations that can take you there.

Check www.thecoromandel.com for details.

Meanwhile, we've got great Council-run parks and reserves, playgrounds, sports grounds, public toilets, boat ramps, wharves and much more available for your use.

CONTACT TCDC: Jump on to our website at www.tcdc.govt.nz, join us on Facebook, or give us a call on 07 868 0200 – we'd love to hear from you.



Hauraki district Mayor Toby Adams

Sometimes the grass is really greener on the other side of the fence! Nau mai, haere mai. Congratulations on 'moooving' to the Hauraki District.

There's a lot to love about this part of the paddock so we hope you'll take advantage of our enviable lifestyle while you're with us. Whether it's the stunning coastlines of Kaiaua and Whiritoa, or cycling and walking alongside the rugged Ohinemuri River in the Karangahake Gorge, you'll find fishing, biking and tramping options galore.

And being in the heart of the Golden Triangle, you're only a dog's whistle from the bright lights of Auckland/Tāmaki Makaurau, Hamilton/Kirikiri-roa and Tauranga Moana if you need a bit of that, but there's plenty of unique cafes, restaurants and interesting shops on your doorstep too.

Dairy farming has a long and proud tradition in the district so

you're sure to feel at home in no time.

And if you do get days when pulling on the gumboots gets hard, also know that there is a wealth of support out there, so come and say hello at Council, we'd love to meet you, and be sure to connect with the Waikato Hauraki Rural Support Trust.

You may have already heard that we're a district that loves to punch above our weight – and getting stuck in is a great way to meet the locals.

Once you've settled the cows in, organised the shed, and unpacked all of those boxes, take some time to find out what's on in the district.

Before you know it, there'll be a Hauraki shaped place in your heart!

We know the weather is either friend or foe for a farmer, and this year it's fair to say that the weather's been challenging.

Being prepared and having a plan can make all the difference in an emergency so I really encourage you to put that at the top of your to-do list.

Once you've sorted out your routine on the farm and familiarised yourself with the lay of the land come and say hello. Our friendly Councillors and staff are here to help.

CONTACT HDC: For more information on HDC services, visit www.hauraki-dc.govt.nz or message us on Facebook or phone 07 862-8069 or 0800 734-834.

Choose Anexa Vets

Your local vet, here to help

Anexa Vets offer a friendly and professional vet service for dairy, and dry stock farmers as well as your family pets. We care about your animals' health and we care about the communities we work with. From the veterinary advice we provide, to the products we use – all our recommendations are based on quality science, with your animals, and your needs well considered.

We are a vet club which means we are governed by a Board of elected farmers. We passionately support the rural communities that our clinics service, through animal health education (farm staff training, workshops, and events), fair pricing, and sponsorship for our local schools and sport clubs.

Anexa Vets offer the full range of services you have come to expect from your veterinary partner. These include:

- ✓ On-farm clinical services
- ✓ Companion animal services
- ✓ Herd Health advisory services
- ✓ Technician services
- ✓ Lab services
- ✓ Farm product supply & delivery.

We are a team of veterinary professionals who are passionate about animal health and helping the communities we live and work within. We offer evidence-based options, and believe in sharing our knowledge and skills to help your farming business and family pets.

In-house lab for fast and efficient results

Lead vet
Your primary contact, with a large veterinary team to call on when needed

Local product rep & on-farm delivery

Herd health advisors
Work directly with you & your lead vet

Vet clinics
Your local clinic is your primary clinic, however members can purchase from all Anexa clinics

On-farm training

Technicians
Efficient support for a range of animal-health jobs on farm

Pet health & vet care

anexa Vet club
For farmers, by farmers
It pays to belong

BUNDLE
Pet Well-being Plan

FARMERS
BECOME A MEMBER AND GET:
2% OFF
when you pay on time



Give us a call, to find out more
0800 284 3838 | anexa.co.nz

Gordonton 07 824 2103	Maramarua 09 232 5891	Morrinsville 07 889 5159	Ngatea 07 867 7256	Raglan 07 825 8390	Te Kauwhata 07 826 3581
Huntly 07 828 7660	Matamata 07 888 8068	Ngaruawahia 07 824 8630	Paeroa 07 862 8815	Te Aroha 07 884 8014	Thames 07 868 7005



Meet the LOCALS

ADVERTISING FEATURE



Find everything you need at HPM

Hauraki Plains Motors has been serving the community since 1926, more than 95 years.

Miles and Diane Shelley proudly own Hauraki Plains Motors, and have 15 dedicated, experienced staff. Michael Duffin has worked with Miles and Diane for more than 40 years, he knows his cars and farm equipment.

Along with Miles, he sells Honda ATVs and outboards, a wide range of farm machinery including Giltrap, Hustler, Vogel and Kea Trailers, plus a huge range of garden equipment, such as Masport lawn mowers, Echo chainsaws, barbecues, generators and anything that is needed

to get the job done.

Steve prepares new and reconditioned used equipment for sale, while Adam Shelley runs the workshop with seven experienced boys ready to repair or service your vehicles or equipment.

Brendon is our tractor serviceman, Duane is our engineer, Cam repairs a wide range, Mitch will fully service or test your vehicle, trailer or bike for warrant of fitness and Ethan and Lance will give your ATV a good going over. Ethan even sees you out on the farm.

Then there is Owen, he is seen everywhere picking up or delivering your ride-on lawnmower or fitting

your new tyres Adam ordered for you or just repairing your punctures.

Colin and Russell are our spare parts people, they can pretty much sort out anything you need to keep your equipment or vehicle running and keep you in the water with fishing gear and bait.

Diane, Michele and Tash work in our busy office, keeping all the paperwork in order, greeting you on the phone or sending you in the right direction.

There is so much more that we do, just give us a call or come on in, if we can't help you we will find someone who can.

- Hauraki Plains Motors

Let's work together to make a difference

The purpose of the Hauraki Family Violence Intervention Network (HFVIN) is to strengthen responses to family violence by improving networking, collaboration, public awareness and service provision at a local level.

We are a grouping of diverse members considering of social services providers, community agencies, interested groups such as businesses, sports clubs, schools, early childhood organisations and individuals who want information and support so they can respond appropriately within their families, workplaces etc.

The fact is only a small percentage of violence is reported to the police.

Most people approach a trusted family member, work mate, school teacher, neighbour or health professional for example.

Their response will make a huge difference to how safe that person feels to continue on the journey of finding safety for themselves and their children.

How do we all then upskill and re-prepare ourselves so we are that person people can approach for help?

As well as assisting people with acknowledging, responding and healing from all aspects of family violence, the network is absolutely committed to ensuring we all know what healthy relating looks



HFVIN chair Cathy Flynn and co-ordinator Sally Christie

like in all our community spaces as well as homes.

Our children and young people deserve us adults to model that and assist them to create thriving relationships in all aspects of their lives.

So let's work together to make a difference. Get involved if you are able within your families and communities.

Be the one who stands up, asks questions and speaks out when things aren't right. Be in touch for any further information or possible ways we can collaborate. Don't be on your own with situations.

FOR ASSISTANCE
If anyone is in immediate danger Ring 111

Te Whariki Manawahine O Hauraki 0800 8683132 24/7 crisis line
Coordinator HFVIN sally@hfvin.co.nz 0273726332

Social Services in your particular town

- Supplied by Hauraki Family Violence Intervention Network

Welcome to all you new families from the team at Hauraki Plains Motors. Call in and see us for all your farming and servicing needs

FARM MACHINERY SPECIALISTS



Hauraki Plains Motors

1 Pipiroa Road, Ngatea • Ph 07 867-7021

A/Hrs Mike 027 440 4681

Miles 027-227-1121

Email: admin@hpmotors.co.nz



Hauraki Family Violence Intervention Network



VIOLENCE FREE
CORDMANDEL + HAURAKI

WELCOME

We get change can be tricky. Ask for help early. Let's support each other.

For more information
Co-ordinator: Sally Christie
sally@hfvin.co.nz
027 372 6332

Meet the LOCALS

ADVERTISING FEATURE

HG Leach & Co: A local legacy

Over the past seven decades, local business HG Leach & Co has built a rock-solid reputation in the quarrying industry and in the fabric of our local community.

From humble beginnings in 1952 as a drainage and dragline business, to a multi-generational, large quarrying operation in 2023; HG Leach & Co continues to build a legacy to be proud of.

As a leading supplier of

aggregates, HG Leach & Co may be more a part of your everyday life than you first think.

From the sealing chip on our roads, to the metal on your favourite walking tracks and everything in between, HG Leach products are literally in the foundations of the Valley community.

"One of the things we're most proud of is our ability to be a big part of the commu-

nity. Not only as a supplier, but as also as an employer and community sponsor," chief operating officer Mark Baillie said.

HG Leach & Co currently operate three local quarries and produce a wide range of product, including roading aggregate, drainage metal, base course aggregates, rip rap and farming aggregate for races and tracks.

When asked about the

key to success, Baillie said: "We're lucky to have built a strong reputation for great product and reliable service".

"Whether you are a local farmer needing base course for the races or a large corporate, needing roading products for a major highway, you know we'll bend over backwards to provide the service we promise you.

"As we celebrate over 70 years in business this year,

I think it's important to acknowledge the role our loyal customers and the community has played in our story to date.

"We're privileged to be part of the Valley community and look forward to growing employment opportunities and continuing to provide great product for decades to come."

- HG Leach & Co
www.hgleach.co.nz

There's no better place to live, work and play

If you're new to the district, welcome, and if you've been here a long time or a short time, hello again.

Whether it's formal events, constituent clinics, public meetings, or just passing by on the street, my role as MP for Coromandel means I meet a lot of people.

I really enjoy these interactions and it's great to hear from locals who are passionate about their communities.

When I'm down in Wellington, these discussions are a reminder of the impacts that decisions in Parliament have on the people in our region.

The Coromandel electorate covers a pretty big area, stretching from the top of the Peninsula, down to Omokoroa, across the fertile Hauraki Plains, and up the west side of the Firth of Thames.

We're home to stunning natural beauty, vibrant communities, and many local characters. You'll never be bored on the Coromandel because there's always something new to discover.

My family have been calling the Coromandel home for generations and it's



Coromandel MP Scott Simpson

fair to say that I share the common feeling that there's no better place to live, work, and play. It's a great privilege to represent this electorate and its people in Parliament.

I am always keen to hear from constituents and if you have any issue you wish to discuss with me, don't hesitate to get touch by either calling 0800 550 330 or emailing mpcoromandel@parliament.govt.nz.

- Scott Simpson, Coromandel MP



Find the style you love

Interior Design Service

Design, spatial planning and project management for new builds/renovations
Sourcing and advice on furnishings
Colour consultation interior/ exterior

Window Treatments

Made to Measure curtains, blinds and shutters

Furnishing, Lighting & Homewares

Shop our full range at our Thames showroom - or online at www.insider.net.nz

Showroom: The Depot Lane, 715 Pollen St, Thames (Parking & rear entrance, 110 Kirkwood St)
M 021 509 952 www.insider.net.nz

insider

Need metal or aggregate on the farm?

WE SUPPLY CRUSHER DUST AND CLAY

WE'RE YOUR LOCAL SUPPLIERS OF AGGREGATE FOR RACES, TANKER TRACKS AND ROADS ON THE FARM.

With local quarries nearby we can offer competitive pricing and delivery.



WWW.HGLEACH.CO.NZ

0800 10 87 27





WELCOME
Come in and see us



Central Motors

Hauraki Ltd

60 Orchard Rd, Ngatea • 867 7524

www.centralmotors.co.nz

Andrew - 027 285 0349

John - 027 279 6799

Meet the LOCALS



The team at Central Motors can help you with your machinery and servicing needs.

Head in to Central Motors

Welcome to your new home. The Hauraki-Coromandel area is a great place to live and play. Here at Central Motors, you will find a large range of construction and agricultural implements and accessories.

As the local dealer for Kubota machinery, Yamaha bikes and quads, and Steelfort lawn mowers amongst a host of other brands, we have been committed to serving the farming

community for more than 40 years.

There is a full mechanical workshop and a great parts department, so we fully service what we sell.

If we don't have it in stock we will source it.

Come on in and say hello to the team, we look forward to meeting you.

CONTACT: Come and see the team at Central Motors: 60 Orchard West Rd, Ngatea, Phone: 07 867 7524.



YOUR LOCAL BUTCHER
Continuing a long history of local family butchers



Great Great Granddad George Courtney completing meat delivery's on the Hauraki Plains in the 1950's

Family run traditional butchery and Homekill processor

Large range of product

Quality smallgoods and bacon

Wild game processing

Large range of meat rubs and sauces to suit 'Low and Slow' charcoal cooking

**OPEN Mon - Fri 7am till 5.30pm
Sat 8am till 1pm**

**61 Belmont Road Paeroa
07 862 6959**



404 Pollen Street Thames Ph: 0223809735 email: burtonsbistro.catering@gmail.com
website: burtoncatering.co.nz facebook: @burtonscatering

Lunch Bar Opening Hours: 7:30am-3:00pm Monday-Friday

Meet the LOCALS

ADVERTISING FEATURE



Dairy farming offers opportunities

Kiwis are being encouraged to consider joining the dairy sector, with lots of on-farm jobs available now.

Through the 2023 GoDairy campaign, DairyNZ is looking to connect Kiwis with the latest farm assistant vacancies across New Zealand.

Waikato farmer John Gibson started his dairy career in 2021, leaving his sales job in Wellington, and was recently promoted to second in charge on his current farm.

"I love the outdoor aspect of farming, along with being able to work with animals. My favourite thing is learning new things, and setting myself goals, targets and challenges to overcome," he said.

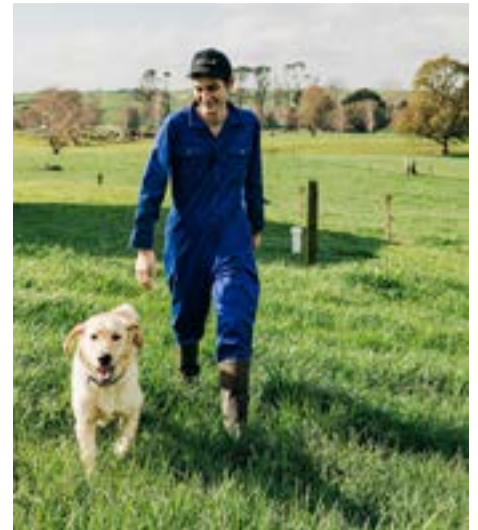
"Before starting my first role, I had no farming experience and had never even stepped foot on a farm. Everything I have learnt has been on the job, with the support of my manager while I adjusted to the new lifestyle.

"Dairy farming gives you the opportunity to get involved in everything from dealing with animal health, operating heavy machinery, pastoral care and aiding in the calving process. If you're looking for a career which will help you grow as a person, challenge you, and increase your experience, then dairy farming is the job for you."

DairyNZ chief executive Dr Tim Mackle said now was a great time to get a foot in the door and start a career in dairy, with plenty of farm assistant roles available across the country.

"A dairy career is unique, providing the ability to work outside and with animals, while allowing you to join a world-leading sector that contributes to the health and economic wellbeing of Kiwis and people around the world," Dr Mackle said.

"Our farmers care about their people, their animals, and the environment and many are looking to support new people who join the sector on their chosen career path.



Dairy farmer John Gibson.

Photo: SUPPLIED

"We are focused on recruiting good people alongside supporting those already working on-farm, so our sector has the diversity of new and already skilled people, now and into the future."

Currently there are plenty of opportunities on-farm for Kiwis to start on a good salary, with no prior experience required.

Promotion and growth opportunities are available for those who want to progress quickly, with farm managers able to earn over \$100,000. Self-employment remains a strong career option for many in the sector, primarily through contract and share-milking pathways.

Many farms offer reasonably priced on-farm accommodation, which means no commute to work or daily travel costs, helping people save more for their future goals.

DETAILS: Find out more about a career in dairy and apply for available jobs at godairy.co.nz/gonow.

Fill your kete with new skills

Valley Education and Training is your local tertiary education provider, and we're based in Kōpū, Thames.

Parents, grandparents, aunts, uncles - if you have whanau members 16 years to 65 years lounging around the house and you're over it, give us a call and we can organise a visit with you at your place to meet the team. We can help them gain NCEA Levels whilst working through our Vocational Pathways programmes at Level 2. Our passionate team at Valley Education will make a difference and help prepare our ākonga for the work environment.

We have designed Te Mahi Whenua (NZ Certificate in Agriculture Workplace Skills, Level 3) to give you confidence with all kinds of machinery - quad bikes, two wheelers, chainsaws, fencing - both wire and post and rails. Te Mahi Whenua is what it says: less classroom time, more time on the land with hands-on real world learning.

The programme encompasses health and well-being and incorporates this into

working the land. You will fill your kete with new skills and upgrade old ones. If you want to be part of a great team whose focus is working the land, not the classroom, call us and keep filling your kete with new skills.

We are taking our Tapa Wha model for learning further, teaching ākonga and repairing these ākonga for life - what it takes to move into employment and succeed.

We have other programmes that can suit most ākonga, our next Open Day is June 14, between 10am and 2pm, at 50 Kōpū Rd, Kōpū, Thames, - feel free to drop in and check us out.

We can also help with driver license training - call or txt us on 027 314 1577, and get all those necessary milestones sorted to be work-ready - bank account, RealMe account, IRD number and qualifications.

We work hard at pastoral care, offer free transport, and we all share kai. Call us now.

Valley Education & Training welcomes all new farmers and their families to the district.

The backbone of the country continues the hard slog through these rough times as usual and it is appreciated.

In a recent survey, it was noted that 60% of New Zealanders have a positive attitude towards agriculture - one wonders what the other 40% eat.

At Valley Education & Training, we operate a number of Agriculture programmes, for young people and adults 16 years and up to 65, from entry level to more advanced, along with mechanical engineering, retail among others.

If you have employees that need to upskill, or perhaps you want to continue your own upskilling journey, we have a one day a week agriculture at Level 3 programme that can be done between milkings or during the dry off period.

This programme is FREE.

Among our other free programmes is our Te Mahi Whenua offering 15 week skills based training.

We are a "for farmers, taught by farmers" education provider.

Valley Education: we might be small but we are big in the Valley.

We also offer free transport throughout the Waihi, Paeroa, Kerepehi, Ngatea and Thames areas.

All the best for your new venture and remember, farmers are outstanding in their field.



Valley Education

free courses • free transport

Call or
text us

07 868 7892 • 027 314 1577

www.valleyeducation.co.nz

Meet the LOCALS

ADVERTISING FEATURE

Read Bros: 156 years of knowledge

With five generations and 156 years of knowledge behind us, chances are we'll know what you're looking for. We can, and will, sell you one bolt or hinge, if that is all you need.

Our retail store on Pollen St offers a wide range of hardware and home-ware. We specialise in engineering and marine supplies but also have a full range of goods for the home, outdoors, gardening, automotive and carpentry.

Our kitchenware department is a treasure trove for any foody or baker.

The hand selected range changes seasonally and features locally made products as well as world renown brands such as Victorinox and Bake-master.

In Farm and Trade, we know how important it is to have the right tool for the job, we value quality products that can be relied on. Read Bros offers an extensive range of power tools and hand tools as well as repair and maintenance services including handle replacement and sharpening.

We also stock workshop machinery including generators and welders as

well as workshop, farm and construction PPE and health and safety consumables.

The unique skills of our staff mean we offer services to our customers that encourage the reuse of tools and goods that aren't yet ready for replacement.

Our services include power tool and hand tool repair and maintenance, key cutting, re-keying of padlocks and locks and cut-to-length extrusions, rope and chain, Read Bros is also a certified testing and filling stations for SCUBA and BA cylinders.

Nic and John Read



Hydraulink
Thames

H 24/7
MOBILE
SERVICE

Welcome to your new home

- Hydraulic hose & fittings
- Breakdown services 24/7
- Industrial hoses
- Lubricants & Oils
- Ram repairs & servicing
- General Engineering



Ph 07 868 5435
0274 990 924



14C Kopu Road
Kopu, Thames

Best under pressure



MY FEED



Often Eaten Never Beaten

YOUR LOCAL FEED SUPPLIER IN PAEROA

WELCOME TO ALL
NEW FARM OWNERS/MANAGERS & FAMILIES TO THE AREA

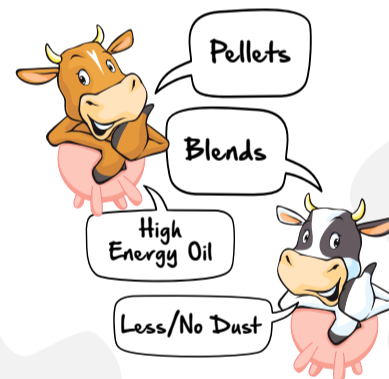
WE ARE YOUR LOCAL STOCK FEED SUPPLIER

All blends are custom made through a mixer wagon so all your girls are getting the same uniform feed/minerals.
Custom made to fit your farming system and diet requirements.

- ✓ Bulk products direct.
- ✓ Custom Blends all through mixer wagon for a more uniform blend.
- ✓ Minerals/Trace Minerals/Custom Made Mineral Blends.
- ✓ Contracts.
- ✓ Auger and bulk delivery for silo and bunker.

CALF MEAL

- ✓ Highly palatable Calf Meal with all the Vitamins & Minerals with Coccidiostat.
- ✓ Available in 500kg and 1000kg bulk bags.
- ✓ Competitively Priced.



We work while you & your girls Make the Moolah!

CALL NOW 0272 240 728

myfeed.co.nz | Brett@myfeed.co.nz

Five generations, one store

READ BROS.
EST. 1867
Hardware

- Fastenings and Extrusions
- Key cutting and Locksmithing
- Interior and Exterior Paint
- Marine Supplies
- PPE and Footwear
- Tools
- Hose and Rubber
- Engineering and Welding Products

308 Pollen Street, Thames
Telephone 07 868 6608
www.readbros.co.nz

Welcome to our district, it's a great place to be!



Play therapist alleviates mental health

By GORDON PREECE

Ngātea-based play therapist said addressing mental health challenges through play for children and young people had become more recognised.

Debbie Mills, who has worked in the profession for around 28 years both in New Zealand and the United Kingdom, told The Profile she had offered her expertise in the Thames Valley for the past three years.

“Play therapy is becoming more and more recognised as the children’s language, because you often get a child into the counselling space and to find the right words to communicate how they feel can be quite challenging,” she said.

“But to use play as therapy and to express themselves through puppetry, or sand therapy, or creative therapy, or expressive play, is much easier on the child than it is to find the words.”

Debbie said she had been gifted a room for her play therapy service, which is called Ripples, at Ngātea Primary School in Term 3 last year, where she has treated 20 patients to date.

“It is a privilege to be able to provide support to our local families in Ngātea through Ngātea Primary School, with thanks to the board of trustees, principal and staff who recognise the value in play therapy with children going through tough stuff,” she said. She is also contracted to provide play therapy at Goldfields School in Paeroa, Kerepēhi School through CAPS Hauraki, and to a range of organisations including Oranga Tamariki and Leukaemia and



Debbie Mills uses a range of specialist toys to enable children to release feelings. Photo: GORDON PREECE

Blood Cancer New Zealand. Debbie, who lives in Te Kauwhata, said she used a range of specialist toys to enable children to release feelings that may be impacting their mental health.

“Puppets for example are a specialist play item, if you’re coming in for therapy and you’re feeling very worried or anxious about something and you put a puppet on your hand, you can talk about your feelings through the puppet,” she said.

“It feels so much safer than what it would be talking to me right now without that on.”

Debbie said children had also benefited through a specialist punching bag called a bobo, and

costumes. “A bobo allows the child to express their emotions by punching it but also by loving it, snuggling it, putting wigs on it and I’ve had tutus put on it,” she said.

“Dress ups are also important because when [children are] dressed up as a pirate or a police officer, often they’ll talk through what’s happened or re-enact what’s happened, and they’re safe doing it because they’re dressed up.”

Debbie said the public would be surprised how many adults also benefit from play therapy.

“There’s nothing more powerful than giving an adult a piece of clay and saying to them ‘sculpt the worst thing that has happened to

you in the last year,’” she said.

“Once I’ve allowed you that time to sculpt it, I would then say to you ‘I want you to now name that item that’s in front of you that you’ve just sculpted’. Because what I’m doing is taking you out of that first person and into the third person.

“Then I would say to you ‘what would you like to say to this thing that has happened to you’, and you would say it, and then I would encourage you to say it louder, and then I would encourage you to say what you think it would say back to you.”

Debbie said she would then encourage the patients to destroy their clay sculpture, which allows them to release their feelings.

In Brief

SHOP AND WIN

Positive Paeroa is hosting a shop and win competition with a chance for shoppers to become \$1000 richer. Treasurer Barbara Berry said the reason for the competition was to lure locals into town. “In winter time, as you know, it’s dreary and the weather is not all that great so we’re encouraging people to come and spend their money in town,” she said. Barbara said entrants could write their name and phone number on the back of a receipt from any Paeroa store and pop it into one of the labelled competition boxes at one of the participating stores. Barbara said the competition closed at 1pm on June 9 with the private draw taking place at 5pm at Paeroa Police Station. The draw will be livestreamed on the Positive Paeroa Facebook page.

STREET LIGHT OUTAGE

Late April, Waka Kotahi NZ Transport Agency received a report that the lights at the intersection of State Highway 2 at Kerepēhi Town Road and Wharepoa Road had been out for around one week. The job was logged with PowerCo, with PowerCo advising Waka Kotahi on May 10 that the job had been completed. However, due to an error in communicating the extent of the fault, the streetlights on the Wharepoa Rd W Side were not fixed at this time. Waka Kotahi has logged another job with PowerCo, and expects the lights to be back working soon.

PINK RIBBON

Around \$1095 was raised for the Breast Cancer Foundation at the Paeroa Pink Ribbon luncheon on May 17, with 89 people attending. Host Lyn McHugh thanked the volunteers who helped her on the day.

Pukekos Educare at your service since 2003

- ★ A safe space for little ones to truly be themselves, to enjoy friendships, adventures, & discoveries, about themselves and the world around them.
- ★ Home away from home with children spending their childhood years together (not separated by age) a true family feel.
- ★ Highly skilled teachers, with years of experience, who genuinely love and care for your precious little ones with loads of cuddles, fun and laughter.
- ★ Enchanting, creative, and large natural play spaces for those magical outdoor adventures.
- ★ Highly successful & innovative transition to school programme integrated into the local school programmes



Pukekos Educare
creating the magic of childhood
Ph 07 868 5027

RETAIL LEVEL 2

When a customer asks

“How much is this?”

you could say “read the tag”.



Upskill your customer service.

Learn how to deal with the general public, even the Karen’s of this world.

How much is the course? **FREE**, no tags attached. No experience needed.

Level 3 Agriculture spaces available now.
Level 3 Horticulture spaces available now



Valley Education

free courses • free transport

Call or **07 868 7892**
text us **027 314 1577**

www.valleyeducation.co.nz

Paeroa Auto Electrical

- Auto Air Conditioning
- Latest Diagnostic Tools for your European Car
- Range of Batteries for Cars, Trucks, Tractors, RVs and more
- On Farm Auto Electrical Service

Ph: 07 862 8565 Email: unipoint@xtra.co.nz
3 Belmont Road Paeroa



Health & Wellbeing

Muscle, tissue therapy backed

Bowtech practitioners use thumbs and fingers on precise locations (on muscles, tendons, and ligaments or nerves), using rolling type moves. The technique encourages the body to realign itself - there is no manipulation of hard tissue and no force is used.

The sessions reactivate the recovery process in situations where healing from trauma, sickness or surgery has stalled or reached a plateau. Just some of the conditions that respond favourably to the treatment are noted on the Bowtech advertisement on this page.

Pam Smith is qualified in the original technique and specialised Bowen procedures, and is also a registered Bowen practitioner, on the back of many years experience as a Registered Nurse.

TESTIMONIALS

"Following a knee replacement Pam assisted me to recover from residual anaesthesia and reduce knee swelling following surgery. Both issues were fully resolved

with Bowen treatments. I continue to have Treatments as required."

- Graeme, Thames, 2023

"Thank you, I am very impressed with the Bowtech procedure. I have attended Pam's clinic for lower back pain and sciatica. My general wellbeing has improved and all results have been very positive."

- Jen, Thames, 2023

"I experienced a painful attack of shingles across my shoulders, arm neck and head.. Following Bowen treatment the pain went away. A short time later I had a follow up treatment for my shoulders and neck and both have resolved."

- Jill, Thames, 2023

"I have been seeing Pam for three years now, I have found the Bowen treatment she provides has been helpful for arthritis and general wellbeing. Pam recently treated me after I had a viral infection, vertigo and shingles, the treatment relieved the symptoms immensely."

- Yvonne, Thames, 2023



Health Ngātea has undergone a \$200,000 restoration.

Photo: GORDON PREECE

Restorations at Ngātea clinic

By GORDON PREECE

More than 100 people checked in for an appointment at Health Ngātea on May 26 for a blessing of its new refurbishments.

Business leader Dwayne Stewart told *The Profile* the centre, which was rebranded from Hauraki Plains Health Centre in 2021 and is an extension of Health Te Aroha, required an injection of restoration to benefit its staff and patients.

"We came into the building two years ago," he said.

"One of our main aims was to create a space for both staff and

patients alike that's pleasant and a nice, bright, and bubbly place to come to."

Dwayne said the more than \$200,000 reservation project opened wide in December, 2021, with all patients' rooms repainted and new ceiling and flooring installed throughout the centre, which is located at the corner of Dent and Rānui streets.

The restorations were stitched in April this year.

"We've also created a couple of new rooms, as part of how we run our general practice under the Health Care Home model," Dwayne said.

"One of the key components of

that is to have doctors offstage... where we have medical care assistants [MCA] who should pick up the patients from the waiting room to do some of their basics like blood pressures and a whole lot of health check scenarios before our doctors go into the room."

"It's really good for all our quality side of things... and it's very beneficial for the patients themselves and making sure everything's up to date."

The blessing was led by Kerepēhi Kaumatua Ron Edwards, Delphina McCaskill from Kerepēhi Marae and Kerepēhi School principal Moana Te Moananui.

What is Bowen?
Bowen is muscle and connective tissue therapy, appropriate for all ages.



BOWTECH
The Original Bowen Technique

How does it work?
Bowen encourages the body to realign/balance itself.

Some of the conditions that often respond favourably are:

• Back Pain/Sciatica	• Respiratory Problems & Hay Fever	• Tinnitus
• Groin Pain, Pelvic Tilt & Uneven Leg Length	• Earache & TMJ Problems	• Hip, Knee, Ankle & Foot Problems
• Digestive & Bowel Problems	• RSI, Carpal Tunnel & Tennis Elbow	• Colic (infants respond well)
• Stress & Anxiety	• Migraines & Other Headaches	• Neck & Shoulder Problems



Pam Smith
Registered Professional Bowtech Practitioner & Nurse

021 293 5896 • Thames
pamjsmith.nz@gmail.com
www.pamsmithbowen.com



WALTER & Co
HAIRDRESSING



Classic to contemporary styling

All aspects of colouring

Blonding specialists

"City styling in the heart of Coromandel"

558 Pollen St, Thames. Phone 868 6105
www.facebook.com/walterandcothames
www.walterandco.co.nz
Instagram@walter_andco

TE AROHA WHĀNAU HEALTH CENTRE

Our Te Aroha Whānau Health Centre provides easy access to a range of health services such as GP or nurse appointments which will be available from Mondays - Fridays each week (times may vary from time to time).

All our services are accredited, accessible, affordable, of high quality and available to anyone in our wider Hauraki community.

Thames Centre

Pharmacy

+

Dispensary & Healthcare Advice

Efficient convenient prescription dispensing

Open Monday to Friday
9am - 5pm
(closed 12.45pm - 1.45pm)

Thames Medical Centre
817 Rolleston Street
Thames

Ph 07 8685100 – Fax 07 2800724
pharmacist@thamescentrepharmacy.co.nz

Our team are locals supporting locals

SPORTS

Hauraki girls ruck in with Chiefs Manawa

By ALICE PARMINTER, Public Interest Journalism funded by NZ On Air

It was the opportunity of a lifetime for the girls of Hauraki Plains College's rugby teams, as they took to the field with players from the Chiefs Manawa squad on May 28.

Twenty-two of the college's aspiring female rugby players were invited to train with members of the squad, after winning a place on the 2degrees womentorship programme. They ranged in age from 13 to 17.

Students across the country were invited to apply for the programme, an initiative by the telecommunications company aiming to support women's rugby and inspire young wāhine [women].

A whopping 18 individual entries were received from Hauraki Plains College (HPC), a number which did not go unnoticed by the selection committee.

"Sounds like it might have got us across the line, the 18 entries from HPC," HPC assistant coach Angela Forsyth said.

"I think maybe it [helped in our favour] - obviously in that sense the girls were quite keen on getting selected."

"We received over 150 heart-tugging entries, each of them as worthy as the others, and wish we could have given each and every one a day with their sporting idols," 2degrees head of sponsorship Anna Gorman said.

The HPC students, along with



HPC girls mingled with girls from Rotorua Girls High School, and the Chiefs Manawa players and coach in an all-day inspiration and skills session.

winners from Rotorua Girls High School, spent the day in the company of No 8 Kennedy Simon, lock Chelsea Bremner, hooker Luka Connor and Chiefs Manawa coach Crystal Kaua.

"It's such a neat opportunity for our girls," Angela said.

"We don't tend to see high-profile athletes, especially women athletes, too often."

The all-day affair took place at the Chiefs Manawa team's home ground in Hamilton. The girls received VIP treatment, with a chartered bus service, and provided meals. "The players talked about how nutrition's really important

and so that was really good for them to hear, and that was also being backed up in terms of what they were [fed]," Angela said.

The day began with a morning panel, where the students asked questions, talked about their goals and aspirations both on and off the field, and worked on mental preparation tips for game days.

"It was a great opportunity for our girls to listen to the journey that the players had been on, what a typical training day might be for them, how they've gotten to where they've gotten, some of their backgrounds in terms of their early rugby days, and how far they had

to go to travel to train or to play schoolgirl or club rugby," Angela said.

After lunch it was time for practice - and the girls were put through their paces in a series of drills and skills activities, followed by a friendly game.

"I think the girls felt quite privileged to have that opportunity to have gone and spent the day over there and to rub shoulders with some stars of the game," Angela said.

"[The players] were fantastic. They were just constantly interacting with the girls when they could, very approachable, happy and

willing to have photos at the end of the day."

Angela said the programme was a valuable experience for all the girls, whether they were planning on pursuing a career in rugby or not.

"The effort and passion throughout the day was just really cool and really evident for the girls to see," she said.

"Womentorship just says it all, they certainly role-modelled.

"If you get a couple of girls inspired by the day I think that's a win, isn't it?"



SPREADERS

Mag 45 Causmag duster & spreader 45 L \$2660 + GST	Spreadmax fertiliser spreader 120 L \$3350 + GST	Spreadmax easy lock drive fertiliser spreader 120 L \$4150 + GST	Spreadmax fertiliser spreader 240 L \$3580 + GST	Spreadmax easy lock drive fertiliser spreader 240 L \$4700 + GST	Spreadmax TPL750 fertiliser spreader 750 L \$5190 + GST
--	--	--	--	--	---

Hauraki Plains Motors
1 Pipiroa Road, Ngatea • Ph 07 867-7021
A/Hrs Mike 027 440 4681, Miles 027-227-1121 Email: admin@hpmotors.co.nz

Flannelette condemned after fatal fire



As part of a Valley Profile series, **MEGHAN HAWKES** explores our local history by seeking out stories of life and death in the Thames Valley

Seventeen year old Mabel Kennedy was cooking lunch over an open fire in the kitchen of her employers, the Moore family, at Mill Road, Paeroa. The range, which was usually used, had been taken outside to cook on during the hot summer of 1914. It was now the end of March and cooler in the kitchen. Mrs Moore and the children had gone for a walk and Mr Moore was lying down. A boy named James Smith, 15, was also on the premises.

Suddenly Mabel's apron caught fire and she and James hastily tried to put it out but couldn't. Mabel rushed outside and across a paddock before jumping into a ditch full of water.

This extinguished the flames but Mabel was badly injured. Mr Moore was roused from his rest by the commotion. He gave what help he could to Mabel and called for first aid remedies to be collected from the Gold Extraction Company's works. Dr Smith was sent for, and on arrival dressed the wounds. He ordered Mabel's removal to Thames Hospital, where she was taken, in a very critical condition, by the afternoon train.

The Kennedys, of Corbett St,



A housemaid is up early to get a bright fire going.

Photo: SUPPLIED

Paeroa, had already been dealt one dreadful blow with the death of a son just three months earlier. William Kennedy, 27, had drowned while swimming in a storage dam at the Waihi Paeroa Gold Extraction Company after work.

Six days after her accident, local newspapers were pleased to report that Mabel was progressing favourably and there was every hope that she would recover. But within weeks, despite Thames Hospital's Dr Foote and his staff doing everything possible for her, she gradually sank and died in May.

Her parent's heartfelt thanks for the attention and kindness given to Mabel were published in a general notice in the *Thames Star*.

The speed of the fire had been fatally fuelled by flannelette, a fabric used in undergarments and night-wear. Flannelette was a plain-weave cotton with a raised fluffy surface which, if a spark landed on it, trans-

formed into a sheet of rapidly moving flame. Its dangers were well known and it was the cause of many deaths.

Coroners and inquest jury's were vocal in their opinion of flannelette - one jury in 1910 asked that the Public Health Minister condemn its use in the cause of humanity.

Many lives had been sacrificed through its use and it should be banished from every household. In 1913 a coroner stated that in view of the large number of cases where the fabric was responsible for fatal burns, it should be made a crime to wear flannelette.

As a general servant Mabel's days were busy with cooking, cleaning, and washing, dealing with trades people and receiving visitors. She probably gave a hand with the children, the vegetable garden and clothes mending. A large part of her work involved the use of fire.

Mabel was buried with her brother at Paeroa's Pukerimu cemetery.

ENTERTAINMENT

Ohinemuri Singers set to perform

The long-established singing group, Ohinemuri Singers, is based in Paeroa and is putting on two mid-winter concerts to "raise peoples' spirits".

A spokesperson for the non-profit group said with songs such as *Singing in the Rain* and *Somewhere Over the Rainbow*, the feeling of the shows promised to be upbeat and positive.

The group is ably supported by the keyboard-playing of the talented Valerie Holman, and there will also be guest artists performing.

Brett Lowe will be displaying

his skills with the xylophone and banjo and Roz Begbie will present a piano item.

"The programme is made up of many well-known and much loved songs and will include a chance for the audience to join in with a rousing rendition of *You'll Never Walk Alone*," they said.

The first performance will be at Richmond Villas in Thames on Saturday, June 24, at 3pm.

The Paeroa concert will be at the Elim Church in Station Rd on Saturday, July 1, at 2pm.

Entry price is \$10.



The Ohinemuri Singers will perform two shows.

Photo: SUPPLIED

AVAILABLE NOW

- One Bedroom Apartment, Level 3
- One Bedroom Apartment, Level 2
- 3 Bedroom Villa, 124sqm with 1 bathroom, guest WC, single garage.

ENQUIRE TODAY!



STAGE 1 IS NOW COMPLETE ENQUIRIES FOR STAGE 2 ARE WELCOME!

All apartments are within walking distance to Thames' shops, cafes and walkways.

The perfect location to enjoy your fun-filled retirement

Our open plan, single level apartments feature covered balconies with fantastic views of the sea, Kauaeranga River and mountains.

Each unit's elegantly finished kitchen, lounge, bedroom and bathroom offer stylish warmth and light.

All residents enjoy scenic views from each level's shared lounges, use of the Village Community Lodge and participation in all activities and amenities at your leisure.



PHONE US
to view
by appointment

Come and experience
the difference!



Living the lifestyle, loving the choice...

A lifestyle village in Thames on the Coromandel

82 Richmond St, Thames

0800 868 5484

www.richmondvillas.co.nz



SPORTS

Run to the hills

High school students confronted testing terrain at South Farms in Mangatarata on May 23 for the Thames Valley Secondary Schools Cross Country Championships. Each competitor raced over rolling hills, muddy bogs, and creeks, in an effort to conquer the course. Reporter **GORDON PREECE** captured the action.



Zoe Winter, left, and Abby Greenwood catch up.



Thames High School year 9 student Cole Muir takes a splash.



Thames High's Jack McLaren powers through the water.



Waihi College students Bhima Meares, left, Tai Baker, and Miller Kaczon.



Ashley Steffek claimed second place.



Paeroa College's Cooper Robinson.



CoromandelApp

SCAN ME



Local news and information at your fingertips!

Download the **Coromandel App** for up-to-date local news from around the Coromandel Peninsula and Hauraki districts, plus road and weather reports, local activities, trades & services, things to do, local markets, shopping, dining, community information and much more!

The **Coromandel App** is powered by your local team at the *Valley Profile*, with our award-winning journalists providing local news you can trust

Get your business on the *Coromandel App* for a cost effective way to reach your customers with listings, banners or in-story adverts. Pricing starts from just \$10 + GST per week!

Find out more: Ph 022 130 3885, nikki@valleyprofile.co.nz

ADS FROM JUST
\$10
+ GST
PER WEEK



DOWNLOAD FREE TODAY!



The Valley Profile

CALL THE EXPERTS

ARBORIST



TREE SHAPES

Qualified Arborists

- Treework Large & Small
- Stump Grinding ➤ Hedge Trimming
- Fruit Tree Pruning ➤ Chipping

For a free quote call
07 868 3985 or 0274 726627

ARBORIST

We solve your tree problems
Tree Removal • Stump Grinding
Pruning • Clearing • Storm Clean Up
Qualified, experienced,
fully insured
Trusted treework for over 25 years
Call today
SHORT BACK'N'SIDES LTD
027 439 0367
shortbacknsides.co.nz

BUILDING SERVICES



PROFESSIONAL TRADE SERVICES

BUILDING | ELECTRICAL | PLUMBING

RESIDENTIAL - House Renovations - Kitchens
Bathrooms - Pergolas - Fencing - Decks
Gibbing - Tiling - Landscaping - Painting
General Home Maintenance and Much More

COMMERCIAL - Body Corporate Maintenance
Programmed Maintenance - 24/7 Emergency Callouts

CONSENTS - Required Building Consent work lodged with Councils

DESIGN - CAD Design for Extensions - 3D Room Design (see how your job will look like when completed)

INSURANCE - Preferred Insurance Provider
Flood / Earthquake / Cyclone / Electrical
Plumbing Work

Ph 0800 088 001 (Call for a FREE Estimate) www.ptsnz.com
Office & Showroom 3 Coronation Street, Paeroa

CHIMNEY SWEEP



Chimney Sweeping

Rich Visick
027 424 4217 / 07 862 5114
Coromandel, Hauraki & Beyond
Heights Certified & Insured

CLEANING



A CLEAN UP CREW

- Lawn mowing
- Weedeating
- Hedge & tree trim
- Section clearing
- Gardening
- Rubbish removal
- Interior house clean
- New build clean/clear
- Odd jobs considered
- One off jobs welcome

0800 464 898
Alaine Hedges
027 242 7268
John Hedges
027 457 2018
Email: info@ajcleanupcrew.co.nz

DRIVING ACADEMY

DRIVING COURSES

Driving lessons
Learner Licence courses*
Defensive Driving courses*
Book now **027 314 1577 (text or phone)**
*register your interest
*see if you are eligible for free courses
admin@valleyeducation.co.nz



EARTHWORKS & CARTAGE



Digger, Bulldozer & Truck Hire

- Mulching
- Cartage of Metal, sand, fertiliser, palm kernel, hay & maize silage

PHONE TIM 027 278 5384
T & A MCWATTERS LTD

ELECTRICAL INSPECTOR



INSPECTRICAL

- Caravan e-wofs
- Home and Business electrical inspections
- IQP emergency lighting inspections
- Solar power inspections

Servicing Hauraki, Coromandel and the Western Bay of Plenty
021 944 309 - ben@inspectrical.co.nz

FUNERALS



Valley FUNERAL SERVICES

FUNERAL DIRECTORS

Our family serving yours — in the Hauraki & Thames Corromandel Districts

- Direct Cremation for Ngatea/Paeroa/Thames/Waihi \$2850 GST incl
- Traditional, Eco & Bespoke Funerals from \$4800
- Pre-Planning

Ph: 0800 862 6362
Des & Christine Necklen
Funeral Directors



ELECTRICIAN



INNIS ELECTRICAL

- Domestic
- Industrial
- Commercial
- New Installations
- Re-Inspections
- Electrical WOF's

027 539 5572
theinnis@xtra.co.nz
Registered Electrician & Electrical Inspector
Covering Paeroa and surrounding area

ELECTRICIAN

- Rural & Dairy
- Residential
- Industrial
- Commercial
- Heat Pumps
- Service & Maintenance

ngatea@laserelectrical.co.nz
Electrical Laser (07) 867-7049
"Totally Dependable"

ELECTRICIAN



Cool Electric

- ≡ Electricians
- ≡ Heat Pumps
- ≡ Air Conditioning
- ≡ Security Systems

07 868 7151
E: cooelectric@xtra.co.nz
W: www.cooelectric.co.nz
22C Ngati Maru Hwy, Kopu, Thames

FLOORING

Supply & Installation for Domestic & Commercial

- Carpet • Vinyl
- Laminate • Polyurethane

Contact us for your free Measure and Quote
Phone: **021 020 47027**
Email: **dan@thefloorman.co.nz**



GARDEN CARE SERVICES



Call the Gardener

YOUR GARDEN - YOUR WAY

Garden Care Services
Hedges & Shrub Trimming
Softscapes & Small hardcape features

Call Paul (028) 4640 600
www.callthegardener.co.nz

HIRE CENTRE



THAMES HIRE CENTRE

Jellicoe Crescent, Thames

Perrin Newland
Telephone: **07 868 9350**
Email: **hire@thameshire.co.nz**
www.thameshire.co.nz
HOME HANDYMAN AND COMMERCIAL HIRE

HAIRDRESSER



Magic Scissors

HAIRCUTS WALK INS WELCOME
NEW LOCATION OPPOSITE MITRE 10
APPOINTMENTS POLLEN STREET NOT NEEDED THAMES

HOMEKILL

Hunts Home Kills

For all your meat and game processing needs.

- We are dedicated to you, the customer.
- Hygienic, vacuum packed products.
- Professional facilities.
- Smoked meats are our specialty.
- 12 - 14 days hung on the bone, minimum
- Game orders over 10kg
- Premium custom orders to meet your needs

Ph: 0800 250 939 • Mob: Mike - 021 411 210
E: huntshomekill@gmail.com
W: huntshomekills.nz • Follow us on FB



HOME MAINTENANCE

HOUSEWASH

SOFT-WASH the exterior of your house, roof or patios, fences & driveways.

Cleaning, moss treatment & waterblasting for 25 years.

Also clean exterior windows.

Call 0800 737 777 or Anton direct on 027 313 4386
atlasgroup@xtra.co.nz

HYDRAULIC HOSES



HYDRAULIC

Mobile Hydraulic Hose Service
Whangamata/Thames/Coromandel Region
hyd hosecompany@gmail.com
Matt: 0274 123 996
For Service That Counts

MOBILE MECHANIC



mobile mechanics

We come to you...

- Servicing & repairs on all cars, trucks, campervans, machinery & small engines
- Batteries available

Phone Brian: 021 259 4779 or 876 5401
Email: robosvette@gmail.com



Perrin Newland, of Thames Hire Centre, offers a high level of service. Photo: GORDON PREECE

Excellent service at Hire Centre

Thames Hire Centre on Jellicoe Cr offers a range of trailers, access equipment, excavators, building tools, concrete, cleaning, renovation and gardening equipment, for the Hauraki-Coromandel community. Perrin Newland has operated the centre for four years and said he offered a "high level" of customer service. "I try to offer competitive prices compared to other franchises... and I put a lot into customer service," he said. "I'm also very big on supporting our local tradesmen so I try to do my best for the tradesmen in the area and meet their requirements."

Perrin said Thames Hire Centre offered a special deal on weekends which was a two-day hire for the price of a one-day hire. "Come and see us if you need equipment for any weekend project!," he said. Perrin, whose wife Natasha also helps with the business, said he planned to offer more modern equipment in the future. "You've got to have well maintained and working equipment... and make things more dependable for the customers," he said. Details: Thames Hire Centre, Jellicoe Crescent, Email: hire@thameshire.co.nz, Call: 07 868 9350.

CALL THE EXPERTS

PAINTER

That Painter Ltd.
Residential & Light Commercial Painters
We paint like Picasso only if you want!

- Interior & Exterior • Residential & Light Commercial
- Fully Insured • Workmanship Guarantee

Contact Stan on 0223137911 to discuss your project.

PLUMBER

BROKENSHIRE & ROSS
YOUR LOCAL PLUMBING & HEATING SPECIALISTS



PET FOOD

DOG TREATS

Thames Market every Saturday... Rain or Shine

E: debstra.dogs@gmail.com
FB: Deb's Dog Treats'n' Meats

SERVICES
Plumbing • Drainlaying
Roofing • Gas Home Heating

P: 868 6096
A: 315 Pollen Street Thames 3500
E: brokey@outlook.co.nz
W: www.Brokenshire.co.nz

PLUMBER

Plumbing Laser

PLUMBING • DRAINAGE • GASFITTING
GENERAL MAINTENANCE

Thames 07 868 6021
Whitianga 07 866 0070
Whangamata 07 865 7151
Waihi Beach 07 863 5621

RUBBISH REMOVAL

Smart Bins

Skip bins, Wheelie Bins, Farm Bins

Phone us or book online
0800 4 MY BIN or
www.smartbins.co.nz

SCRAP METAL

Scrappy Verns

Buyers of all scrap metal & cars
Farm clean up specialists
Top prices paid

Phone Vern • 021 621 437

SEPTIC TANK CLEANING

ALLENS UNITED
Paeroa (2015) Ltd

LIQUID WASTE SPECIALISTS

0800 862 720 | 027 442 0067

TYRES & BATTERIES

HAURAKI TYRE and BATTERY

- Stockists of all major tyre brands
- Exide Batteries with extended warranties
- Wheel Alignments.

314 Pollen St, Thames
Ph 868 8182

WINDSCREENS

PRECISION WINDSCREENS

We come to you!

Chip Repairs - Windscreen replacements
-Insurance claims

PH: 0272127750
www.precisionwindcreens.co.nz

Last month's winner of the lotto ticket was Ruth Gera, who found Pete in the May 17th edition in the Central Motors advert.
Go to page 2 for details on how to enter.



Now taking classifieds



FOR SALE!

Ph 022 130 3885 | nikki@valleyprofile.co.nz

CLASSIFIEDS - Deadline 1pm Monday

In Memoriam Unveiling For Lease Trades & Services

Garrett, Rodney George Edward:
Passed away 6th June 2022. Aged 60 years young.
Loved son of Rowan & Vivienne.
Loved brother/brother in law of Paul & Susan, Greg & Margaret, Karl, Brenda, Bronwyn & Waka, Jo & Robyn.
Respected uncle to his many nieces & nephews.
Sadly missed & remembered every day.

Garrett, Rodney:
Family and friends are invited to the unveiling of Rodney Garrett, Saturday 10th of June 2023, 2pm at the Kerepehi Urupa. Followed by afternoon tea at the Kerepehi Bowling Club.

Yards for lease, Thames and Kopu. Suitable for trucks, vehicles or trade business base. Ph 027 440 7101

FENCING CONTRACTOR
Residential & Rural
Retaining walls & more
High quality workmanship
Competitive prices
Call Matt
021 1727 148

Storage
Thames Valley Storage – secure, dry units available, two sizes. Call Trev 027 4076966

Trades & Services
Qualified tiler. Currently available. Enquiries welcome. Ph 021 026 93064

Gardening
Need stump grinding? Any size, any number, anywhere.
Different machines for different applications. Over 20 years experience.
Short Back n Sides Ltd
We solve your stump problems.
027 439 0367

Storage

Public Notices
HAURAKI KIDS INCORPORATED ANNUAL GENERAL MEETING
The AGM of Hauraki Kids Inc. is at 4.30 p.m. on Thursday 29 June 2023 at Thames Education Services
404 Queen Street, Thames

In Memoriam
Garrett, Rodney:
A year without you Dad / Grandad. We miss and love you every day always and forever.
"Love me too"
Jenna, Ricky, Brax, Flynn, Ayla.

STUMP GRINDING.
All sizes, all areas. Thames based. Ph 021 060 7659

STORAGE KOPU, PAEROA TE AWAMUTU
"New Units"
Ph 027 440 7101
07 868 3033
Safe n Sound Storage
www.safestorage.co.nz

For Sale
Dry firewood for sale. Delivery only. Pine \$100 per cube. Old Man Pine \$140 per cube. Phone Mark 027 655 8661 or Steph 027 385 2806

Handyman
Mowing, hedges, fencing, gardening, carpentry, painting, retaining walls, welding, waterblasting.
Work is good quality and I will not attempt to work outside of my skills. Insured. Dennis Schuler 022 129 0169

STORE 4 U Waihi.
Clean, dry, alarmed.
Call Curly 021 746 608.

"Those who dare to fail miserably can achieve greatly." - JFK

Handyman Services
THAMES HANDYMAN & BUILDING SERVICES
Building, home maintenance & general gardening services
Phone: Fleur or Crighton • 0273 913 283

Public Notices
THAMES PUBLIC ART TRUST Annual General Meeting
1.30pm Saturday 10th June 2023 at Grahamstown Bar & Diner cnr Pollen & Pahau Street Thames

Situations Vacant

Valley Toyota

Apprentice Automotive Technician

Due to unprecedented sales, we are looking for an Apprentice Mechanic to join our Thames based workshop.

You will be undertaking a full apprenticeship programme. Working with a dedicated team we offer the security and stability of a long-standing family business.

Applications for our intake are now open and we urge suitably motivated individuals to apply.

This is a Career not just a Job.

Come and join the Toyota Family, Number 1 in the motor industry.

All applications must be submitted by email and include a comprehensive and current CV.

Please email your CV to Adam Manning.
admin@valley.toyota.co.nz

Handyman Services
THAMES HANDYMAN & BUILDING SERVICES
Building, home maintenance & general gardening services
Phone: Fleur or Crighton • 0273 913 283

Storage
TOTAL STORAGE LTD KEREPEHI / PAEROA
We will beat any legit quote for storage in 10ft or 20ft containers
T&C's apply
021 67 67 99
info@totalstorage.co.nz

Public Notices
REGISTRATIONS OF INTEREST - TENDER
HAURAKI DISTRICT COUNCIL

Hauraki District Council is seeking registrations of interest for an upcoming tender for specialised professional services for the **Hauraki Plains Adaptation plan**.

We are looking for registrations of interest from suitable individuals/organisations with experience in adaptation planning using the Ministry for the Environment guidance on coastal hazards and Dynamic Adaptive Pathway Planning (DAPP) approach.

For more information and to register please go to the Government Electronic Tenders Service GETS <https://www.gets.govt.nz/>
We will only be receiving registrations on the GETS website.

Closing date 20 June 2023, 4pm.

LD Covers
Chief Executive
Hauraki District Council



**NEED STAFF?
GOT SOMETHING TO SELL?**

Advertise in the *Valley Profile* and get results!
Phone Nikki on 022 130 3885

Hundreds raised for charity at fashion show

By ALICE PARMINTER, Public Interest Journalism funded by NZ On Air

The residents of Thames' Richmond Villas put their best feet forward for a fashion show on May 25.

The event was a combined event for the Breast Cancer Foundation's pink ribbon campaign, and the Salvation Army Hospice Shop.

The residents raised \$600 for the Breast Cancer Foundation.

The models, all residents of the village, were dressed in clothes from the Salvation Army store, which also netted \$200 from clothing sales after the show.

"It went off very well and it was attended by 60 residents," committee chairman Gary Pye said.

The models were handpicked by resident Bev, former owner of Beverly Anne Bridal.

"She did a wonderful job of hand picking out what the various models, including two gentlemen, wore on the day," Gary said.

"It wasn't just looking at a rack and saying, 'oh that will do'; she did a great job in matching it all up."

"It looked great."



Models strut their stuff at the Richmond Villas fashion show.

Photo: SUPPLIED

Ngātea apprentice yields golden gun 100th kiwi released

By GORDON PREECE

Panelbeating apprentice Samuel Broadbent has received a national award for his work on vehicles that had been shaken and stirred in collisions.

The 20-year-old, who has worked at Ngātea Panelbeaters for nearly two years, was awarded the Collision Repair's Association's Golden Gun Apprentice of the Year for 2022 at the beginning of March.

Samuel, who completed his New Zealand Certificate in Collision Repair and Automotive Refinishing earlier this year, said he was "pretty happy" with the accolade.

His father Phil Broadbent, who has owned Ngātea Panelbeaters for nearly 20 years, said the Golden Gun award highlighted the local panelbeating industry. "It's not only Samuel who has done well, it's our whole company," he said.

"If Samuel gets the accolades, it brings to light the industry a little bit, it highlights our industry and the skills in this area."

Phil said there was a list of attributes the association looked for in award candidates.

"[Samuel] did really well as far as his results go in his studies and part of his course was showing the practical work," he said.

"His finishes were very nice with painting and they also



Ngātea's Samuel Broadbent was "pretty happy" with his national panelbeating award.

Photo: GORDON PREECE

look at the way Samuel communicates and I think they're going to use Samuel to promote the industry to young folk."

Phil said Samuel also received a \$1000 donation from the Motor Industry Training Organisation (MITO), the opportunity to apply for a MITO post-trade scholarship and a toolset provided by RA John-

stone & Co Ltd.

"The money will be used for furthering education, he wants to do the panel side but he wants to go into more of the business management side as well a little bit further down the track," he said.

"There's a bit of a cost involved in that one and that money will help towards that."

Project Kiwi and Summit Forests have just released the 100th kiwi into Whangapoua Forest on the Coromandel Peninsula as part of their campaign to reverse the population decline of Aotearoa's national bird.

Whangapoua Forest is a plantation forest owned by Summit Forests NZ (formerly owned by Ernslaw One) and a site where ground-based predator control is carried out to help keep kiwi safe. It's here that Project Kiwi releases juvenile kiwi hatched and reared to a 'stoat-proof' weight, giving them a hugely increased chance of survival for when they inevitably encounter a stoat.

Save the Kiwi Coromandel brown kiwi co-ordinator and Project Kiwi project manager Paula Williams said Summit was a key partner, and the project location was an important connecting site in restoring kiwi populations on the peninsula.

"Through monitoring, we know the kiwi inhabiting this block have stayed over successive years, which tells us the mix of native

pockets around waterways and pine plantation of Whangapoua Forest suits their needs," she said.

"This knowledge is helping to reshape perceptions around the value of commercial forestry for kiwi recovery. There are 1.7 million hectares of commercial forestry across New Zealand, so thinking about how we can harness this for the sake of kiwi is full of opportunity."

Whangapoua Forest manager Norbert Klein said it was a privilege to work alongside a group that was so passionate about kiwi conservation.

"Understanding kiwi can thrive in plantation forest gives the forestry industry a tangible way to contribute to New Zealand's overall conservation goals."

"Partnering with Project Kiwi over these last 11 years, and now celebrating the release of the 100th kiwi into the Whangapoua Forest, enables us to give back to the Coromandel community in a way that is genuinely valuable to the future of New Zealand's national bird."



The release of the 100th kiwi into Whangapoua Forest.

Photo: SUPPLIED

Thames Valley Club Rugby

SENIOR A Saturday June 10th

Thames	V	Waihou
Hauraki North	V	Te Aroha COBRAS
Paeroa	V	Waihi Athletic
Whangamata	V	Mercury Bay



All Senior A games start at 2.35pm (unless stated)
Teams named first indicate home team



Rugby United Under 21s V University of Waikato, at Waikato University #1
1.00pm on Saturday 10th June

SENIOR B

Hauraki North	V	Te Aroha COBRAS	Sat June 10th	1.00pm
Whangamata	V	Coromandel	Sat June 10th	1.00pm
Ngātea	V	Tairua	Sat June 10th	2.35pm

When I opened my shop Gothica Baby in November 2022, I chose to do an advertorial with the Valley Profile to introduce ourselves to the community.

I chose the Valley Profile over other local publications in our region because it is authentically local, not just "cut and paste" stories from outside our area.

I could not have been happier with the ad itself and the immediate response from shoppers who saw the ad and came in to have a look. A family came all the way from Waihi because they saw our ad.

I can not recommend Nikki and the team at Valley Profile highly enough.

Sooz Gilmer - Gothica Baby



022 130 3885 | nikki@valleyprofile.co.nz



Five generations, one store

READ BROS.
EST. 1867
Hardware

- Fastenings and Extrusions
- Key cutting and Locksmithing
- Interior and Exterior Paint
- Marine Supplies
- PPE and Footwear
- Tools
- Hose and Rubber
- Engineering and Welding Products

308 Pollen Street, Thames
Telephone 07 868 6608
www.readbros.co.nz

THAMES VALLEY TANGATA ORA TRUST

The People's Wellbeing Trust

Total Mobility Scheme assessors



**SALES
SERVICE
HIRE**



We do our best to source other products on request

DAILY LIVING PRODUCTS

- Reachers
- Sock Aids
- Walking Sticks
- Continence Products
- Bathroom & Toilet Aids

607 Mackay St, Thames (Opposite the hospital) • Ph: 07 868 7723 or 027 383 1117 • E: tvtot2017@gmail.com
Opening Hours: 10am - 3pm Monday to Friday - After hours by arrangement

SUDOKU

103

Fill the grid so every row, every column and every 3x3 box contains the numbers 1-9

		6	2	5				9
5	9	4		3	7			
8			9					5
4		8				5		2
		5	4		2	7		
3		2				6		8
	4				3			5
			6	1		3	8	7
6				7	9	2		

EASY

2	8	7		9	5			
	9	1				5		
					4		8	
			8			6	9	
		4				3		
7	6			1				
1		4						
	8					7	5	
			2	7		1	3	4

MEDIUM

	2	4	7	1			6	
7	8						1	
		1		6				7
			1	2				
			3		5			
				7	9			
4				5		2		
	5						9	6
	7			4	6	1	8	

HARD

HARD

5	2	4	7	1	3	9	6	8
7	8	6	5	9	2	3	1	4
3	9	1	4	6	8	5	2	7
8	3	7	1	2	4	6	5	9
6	1	9	3	8	5	7	4	2
2	4	5	6	7	9	8	3	1
4	6	8	9	5	1	2	7	3
1	5	2	8	3	7	4	9	6
9	7	3	2	4	6	1	8	5

MEDIUM

2	8	7	3	9	5	4	1	6
4	9	1	7	8	6	5	2	3
6	3	5	1	2	4	9	8	7
1	2	3	8	4	7	6	9	5
8	5	4	9	6	2	3	7	1
9	7	6	5	3	1	2	4	8
7	1	2	4	5	3	8	6	9
3	4	8	6	1	9	7	5	2
5	6	9	2	7	8	1	3	4

EASY

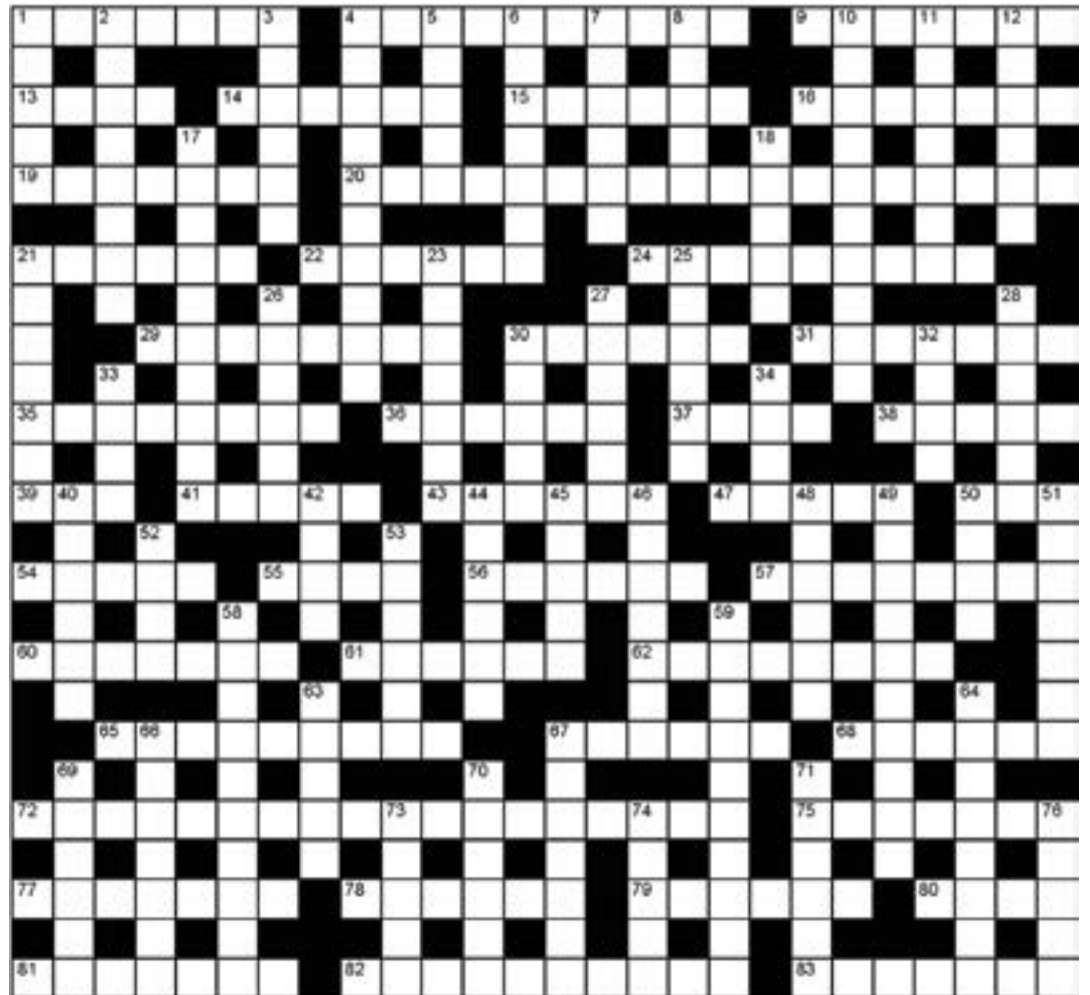
1	3	6	2	5	8	4	7	9
5	9	4	1	3	7	8	2	6
8	2	7	9	4	6	1	5	3
4	7	8	3	6	1	5	9	2
9	6	5	4	8	2	7	3	1
3	1	2	7	9	5	6	4	8
7	4	1	8	2	3	9	6	5
2	5	9	6	1	4	3	8	7
6	8	3	5	7	9	2	1	4

Puzzles © The Puzzle Company
www.thepuzzlecompany.co.nz

JUMBO CROSSWORD

123

- ACROSS**
- 1 Court official (7)
 - 4 Replace with (10)
 - 9 Feel contempt for (7)
 - 13 Delight (4)
 - 14 Film theatre (6)
 - 15 Wayward (6)
 - 16 Inmate (7)
 - 19 Overabundance (7)
 - 20 Period of tranquillity preceding a crisis or uproar (4,6,3,5)
 - 21 Cunning (6)
 - 22 Quick look (6)
 - 24 Athletics field event (4,5)
 - 29 Music writer (8)
 - 30 Stocking band (6)
 - 31 Enterprise (7)
 - 35 Flying (8)
 - 36 Affectionate (6)
 - 37 Colourful gemstone (4)
 - 38 Touch in passing (5)
 - 39 Rodent (3)
 - 41 Soft leather (5)
 - 43 Bicycle seat (6)
 - 47 Has a break (5)
 - 50 Chore (3)
 - 54 Ran for office (5)
 - 55 Young deer (4)
 - 56 Possibility, probability (6)
 - 57 Pay out (8)
 - 60 Description under an illustration (7)
 - 61 Second-in-command (6)
 - 62 Baldness (8)
 - 65 Pirate (9)
 - 67 Lampoon (6)
 - 68 Fill with consternation (6)
 - 72 An unexpected event or occurrence; a surprise (1,4-2,3,3,5)
 - 75 Lay bare through digging (7)
 - 77 Spanish wine-juice drink (7)
 - 78 Practicable, feasible (6)
 - 79 Copper alloy (6)
 - 80 Excess of supply (4)
 - 81 Hinged window cover (7)
 - 82 Left in ruins (10)
 - 83 Gravestone inscription (7)
- DOWN**
- 1 Fake (5)
 - 2 Cold food (3,5)
 - 3 Insubstantial (6)
 - 4 Lost for words (10)
 - 5 Free-for-all (5)
 - 6 Quiver (7)
 - 7 Tax on imports, exports (6)
 - 8 Singing voice (5)
 - 10 Freed from any question of guilt (10)
 - 11 Of crucial importance (7)
 - 12 Free from danger, risk (6)
 - 17 Overgreedy, piggish (10)
 - 18 Direct (5)
 - 21 Man-horse creature (7)
 - 23 Edgy (7)
 - 25 Wild feline (6)
 - 26 Light cake (6)
 - 27 Thrifty (6)
 - 28 Painting done in wet plaster (6)
 - 30 Mill (5)
 - 32 Make weary (4)
 - 33 Horse gait (4)
 - 34 Lose colour (4)
 - 40 Of the stars (6)
 - 42 Distribute cards (4)
 - 44 Grow by addition (6)
 - 45 Log (5)
 - 46 Bewitch (7)
 - 48 Small harpsichord (6)
 - 49 Cuts up further (10)
 - 50 Courtroom 12 (4)
 - 51 Beer plant (7)
 - 52 Chimney deposit (4)
 - 53 Explosive exhalation (6)
 - 58 Final and deciding (10)
 - 59 Exchange letters (10)
 - 63 Smell (5)
 - 64 Carried shelter (8)
 - 66 Vertical (7)
 - 67 Topic (7)
 - 69 Join on (6)
 - 70 Abnormal intense irrational fear of something (6)
 - 71 Enigma (6)
 - 73 Bring up (5)
 - 74 Circular flight path (5)
 - 76 Drawback (5)



PREVIOUS SOLUTION

ACROSS: 1 Pay through the nose, 10 Holidays, 15 Assume, 16 Irritating, 17 Etcetera, 19 Western, 21 Beret, 22 Chihuahua, 25 Alleviate, 27 Evident, 29 Bleach, 33 Dogma, 34 Supplier, 36 Accentuate, 39 Toe, 41 Usually, 42 Muesli, 43 Rarity, 44 Long, 45 Bivouac, 48 Monotonous, 53 Embrace, 57 Spry, 58 Reflex, 59 Harbour, 60 Foolish, 62 Tip, 64 Cradle song, 65 Endanger, 66 Fated, 69 Climax, 70 Cheated, 71 Barometer, 76 Capillary, 77 Rhyme, 78 Portray, 83 Crockery, 84 Occurrence, 85 Parade, 86 Traitors, 87 Swear black and blue.

DOWN: 2 Answer, 3 Trust, 4 Rue, 5 Unit, 6 Harvest, 7 Hatter, 8 Note, 9 Sunshade, 11 Outlaw, 12 Inequality, 13 Area, 14 Spanish, 18 Rhinoceros, 20 Reef, 23 Minus, 24 Paranoia, 26 Lumbago, 28 Vertigo, 30 Bonsai, 31 Fiasco, 32 Pestle, 35 Pluto, 37 Eagle, 38 Ulna, 40 Ergo, 45 Basic, 46 Verbatim, 47 Crease, 48 Melancholy, 49 Next, 50 Trapeze, 51 Nobody, 52 U-turn, 54 Moot, 55 Release, 56 Cashew, 61 Flea market, 63 Venom, 67 Dairy cow, 68 Veto, 69 Crew cut, 72 Ammonia, 73 Mirror, 74 Cherub, 75 Landau, 79 Throb, 80 Nova, 81 Puma, 82 Peak, 85 Pen.

SPORTS

Diamonds shine bright in debut season

By GORDON PREECE

Hauraki North Rugby Club's first ever women's team, the Diamonds, went from a 30-point drubbing in its opening test to reaching the finals in its debut season.

The 35-women team placed second in the Waikato Rugby Wahine Championship after falling short in the final to Taupiri, 17-5, on May 27.

Head coach Brendan Clark told *The Profile* it was "massive" for a fresh team like the Diamonds to make the final round.

"We started off our pre-season against Putaruru, they play in the premier competition, and we went down by about 30 points but it was a lot of the girls' first time playing rugby," he said.

"Then we got into the competition [on April 15] and we lost our first game to Taupiri but then managed to pick up our first win the next week against Matamata.

"It was a very close competition throughout the year which made it really exciting and challenging, and the girls got a crack at the final which they really deserved."

Brendan thanked the rugby club for its "outstanding" support for its wāhine.



The Hauraki North Diamonds head coach said it was "massive" the team made the finals in their debut season.

Photo: SUPPLIED

"It was outstanding for the club to be right behind it from the get go... they renovated one of their changing rooms to be just for the ladies which they really appreciated," he said.

"Every Wednesday they would put on a feed for the ladies after training and one of the coolest days was we had

ladies day, where they sold out of tickets and the club put on a really special day.

"We probably played our best game there at home and we won 29-0 against Waitete, which was the biggest winning margin of any team in the competition this year and the only team who kept another team at

zero." Brendan said the Diamonds could be forever and the team's overall performance was a "positive sign" for women's rugby in Thames Valley.

"Hopefully a few of the other clubs can see what Hauraki North have done and can hopefully follow suit in the next couple of years.

"I think it would be really cool for the girls to continue being able to play competitive rugby here, or in the Waikato, but also I think it's important that we try and grow our own competition in the Valley so there could be a women's competition in the region itself."

WHYTELINE

BUY BEFORE 1 JULY

SWIFT
UP TO **\$2,590**
CLEAN CAR REBATE*



SWIFT HYBRID
\$3,160
CLEAN CAR REBATE*



VITARA HYBRID
UP TO **\$2,850**
CLEAN CAR REBATE*



Hurry, Clean Car Discounts end 1 July, so jump into a new Suzuki today and save yourself thousands.

For more info on our Real Value 3 year/100,000 km comprehensive warranty, 5 year/100,000 km powertrain warranty, PLUS a full 5 year roadside assistance plan, visit www.suzuki.co.nz
*To claim a Clean Car rebate, the vehicle must be registered by 30 June 2023. For more information and how to apply for the rebate visit www.nzta.govt.nz/cleancar.



WHYTELINE.CO.NZ | 39 PUKE ROAD, PAEROA | 07 862 8783

HAURAKI'S HOME OF  SUZUKI